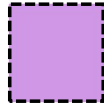
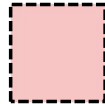


Ventilation Strategy

Ventilation Strategy – Ground Floor Service Wing 1



Mechanical Supply Ventilation via MVHR + natural ventilation from openable windows



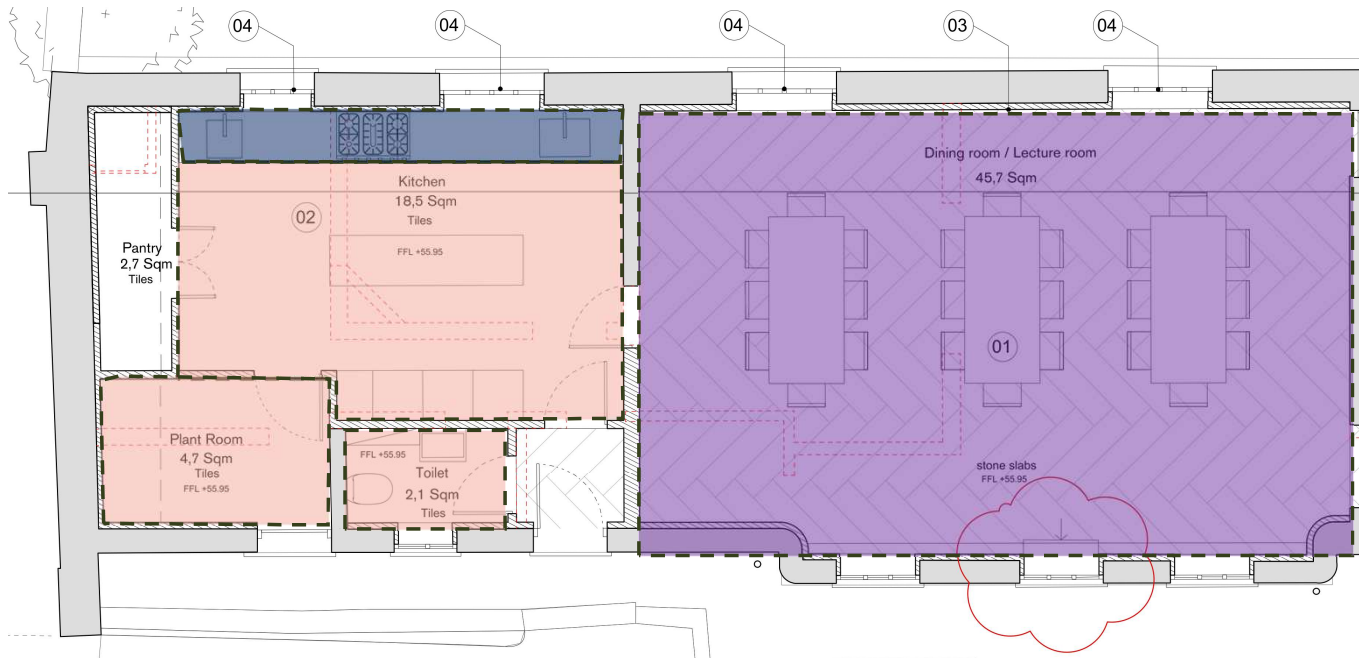
Mechanical Extract Ventilation to be returned to the MVHR unit



Natural ventilation via infiltration and/or openable windows/doors/rooftlights



Ventilator adjacent to the hob/cooker extract directly outside through the façade

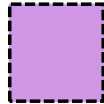


INTERNAL VENTILATION RATES:

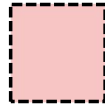
Based on the Building Regulations the various spaces require either a continuous ventilation rate, or a demand based ventilation rate intermittently. Part F : Minimum Ventilation Rates:

	Room Description	Intermittent Extract	Continuous Extract
Buildings other than dwellings	Bathrooms	15 l/s	8 l/s
	WC	6 l/s	6 l/s
	Kitchen	<ul style="list-style-type: none"> 30 l/s adjacent to hob 60 l/s elsewhere 	13 l/s
	Utility Spaces	30 l/s	8 l/s

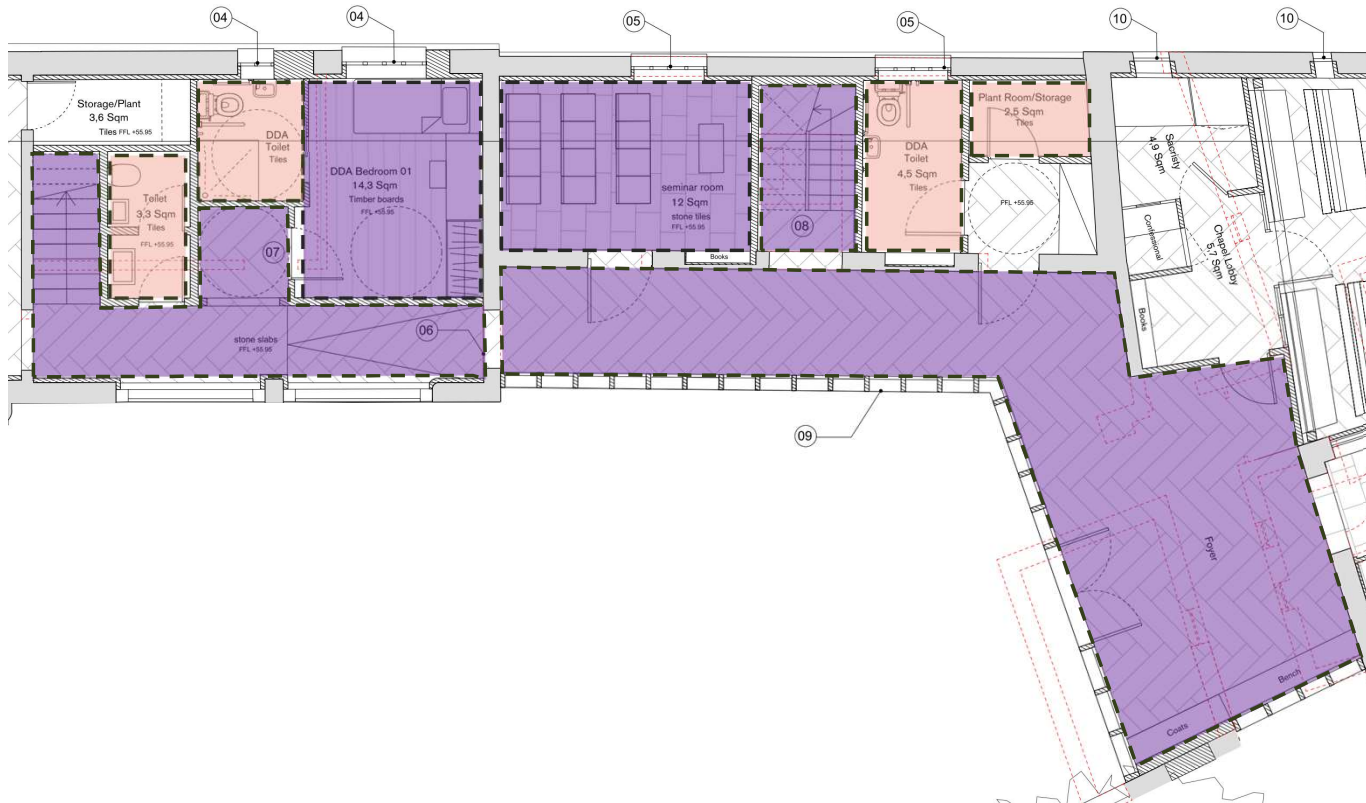
Ventilation Strategy – Ground Floor Service Wing 2



Mechanical Supply Ventilation via MVHR + natural ventilation from openable windows



Mechanical Extract Ventilation to be returned to the MVHR unit



INTERNAL VENTILATION RATES:

Based on the Building Regulations the various spaces require either a continuous ventilation rate, or a demand based ventilation rate intermittently. Part F : Minimum Ventilation Rates:

	Room Description	Intermittent Extract	Continuous Extract
Buildings other than dwellings	Bathrooms	15 l/s	8 l/s
	WC	6 l/s	6 l/s
	Kitchen	<ul style="list-style-type: none"> 30 l/s adjacent to hob 60 l/s elsewhere 	13 l/s
	Utility Spaces	30 l/s	8 l/s

Ventilation Strategy – Ground Floor Main House 1

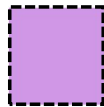


INTERNAL VENTILATION RATES:

Based on the Building Regulations the various spaces require either a continuous ventilation rate, or a demand based ventilation rate intermittently. Part F : Minimum Ventilation Rates:

	Room Description	Intermittent Extract	Continuous Extract
Buildings other than dwellings	Bathrooms	15 l/s	8 l/s
	WC	6 l/s	6 l/s
	Kitchen	<ul style="list-style-type: none"> 30 l/s adjacent to hob 60 l/s elsewhere 	13 l/s
	Utility Spaces	30 l/s	8 l/s

Ventilation Strategy – Ground Floor Main House 2



Mechanical Supply Ventilation via MVHR + natural ventilation from openable windows



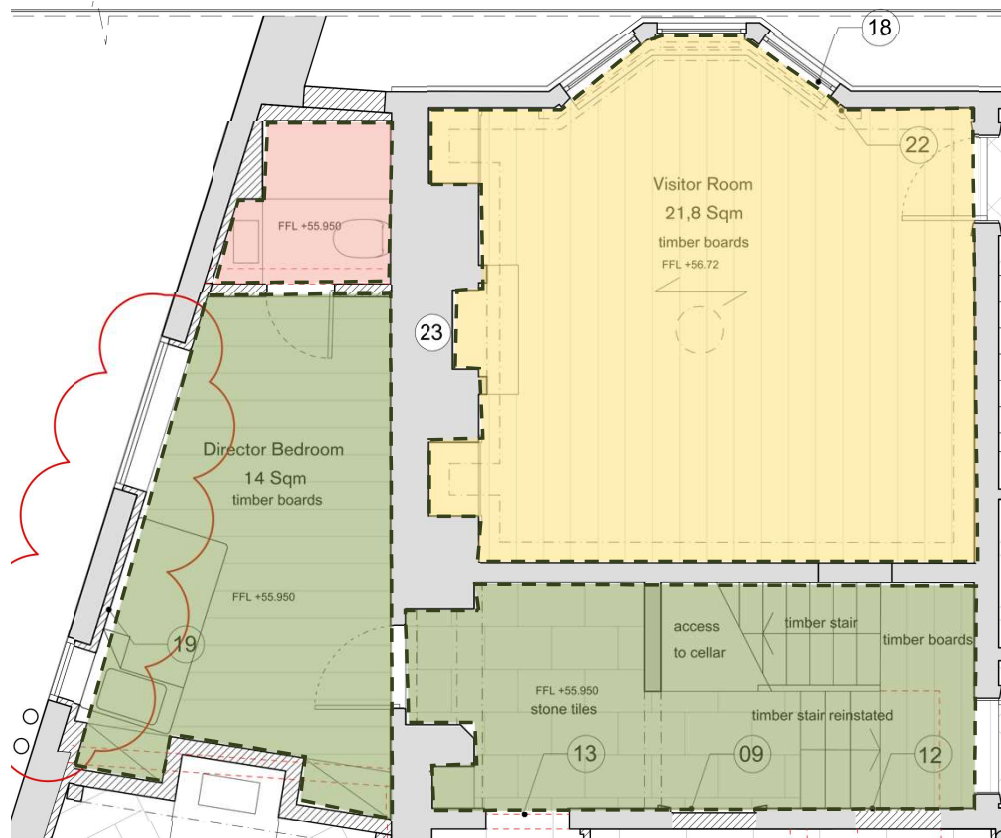
Mechanical Extract Ventilation to be returned to the MVHR unit



Ventilation from centralized extract fan + natural ventilation from openable windows/ doors



Natural ventilation via infiltration and/or openable windows/doors/rooflights

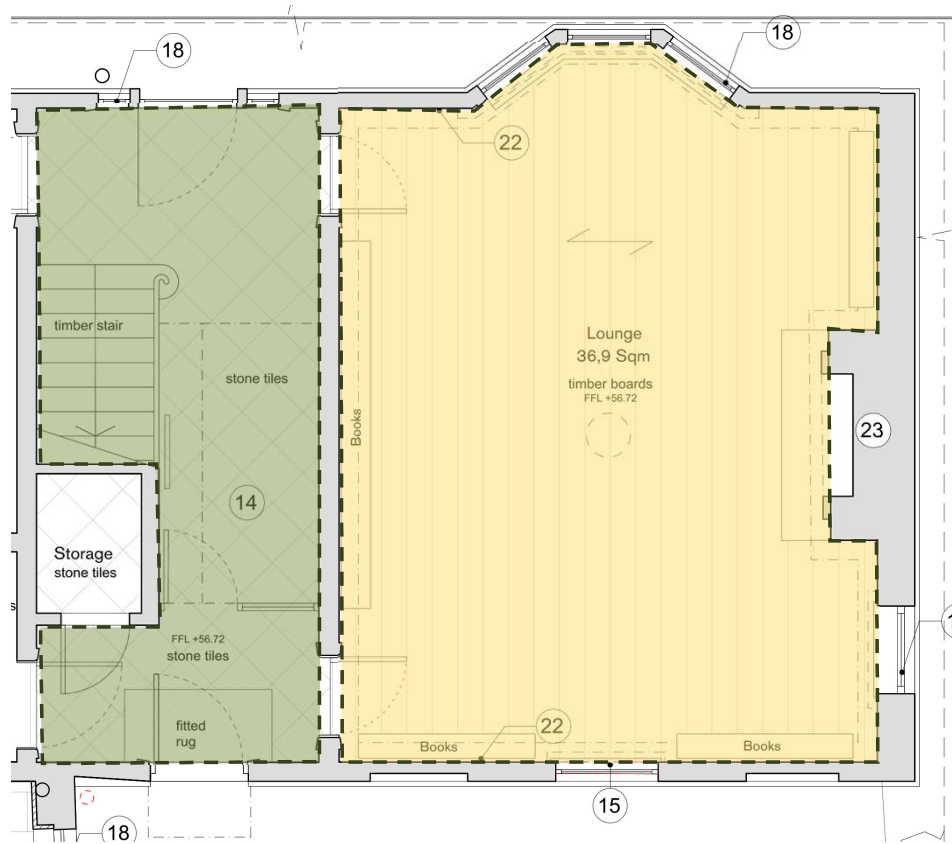


INTERNAL VENTILATION RATES:

Based on the Building Regulations the various spaces require either a continuous ventilation rate, or a demand based ventilation rate intermittently. Part F : Minimum Ventilation Rates:

	Room Description	Intermittent Extract	Continuous Extract
Buildings other than dwellings	Bathrooms	15 l/s	8 l/s
	WC	6 l/s	6 l/s
	Kitchen	<ul style="list-style-type: none"> 30 l/s adjacent to hob 60 l/s elsewhere 	13 l/s
	Utility Spaces	30 l/s	8 l/s

Ventilation Strategy – Ground Floor Main House 3

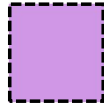


INTERNAL VENTILATION RATES:

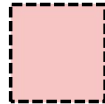
Based on the Building Regulations the various spaces require either a continuous ventilation rate, or a demand based ventilation rate intermittently. Part F : Minimum Ventilation Rates:

	Room Description	Intermittent Extract	Continuous Extract
Buildings other than dwellings	Bathrooms	15 l/s	8 l/s
	WC	6 l/s	6 l/s
	Kitchen	<ul style="list-style-type: none"> 30 l/s adjacent to hob 60 l/s elsewhere 	13 l/s
	Utility Spaces	30 l/s	8 l/s

Ventilation Strategy – 1st Floor Service Wing 1



Mechanical Supply Ventilation via MVHR + natural ventilation from openable windows



Mechanical Extract Ventilation to be returned to the MVHR unit



Natural ventilation via infiltration and/or openable windows/doors/rooflights

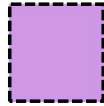


INTERNAL VENTILATION RATES:

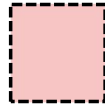
Based on the Building Regulations the various spaces require either a continuous ventilation rate, or a demand based ventilation rate intermittently. Part F : Minimum Ventilation Rates:

	Room Description	Intermittent Extract	Continuous Extract
Buildings other than dwellings	Bathrooms	15 l/s	8 l/s
	WC	6 l/s	6 l/s
	Kitchen	<ul style="list-style-type: none"> 30 l/s adjacent to hob 60 l/s elsewhere 	13 l/s
	Utility Spaces	30 l/s	8 l/s

Ventilation Strategy – 1st Floor Service Wing 2



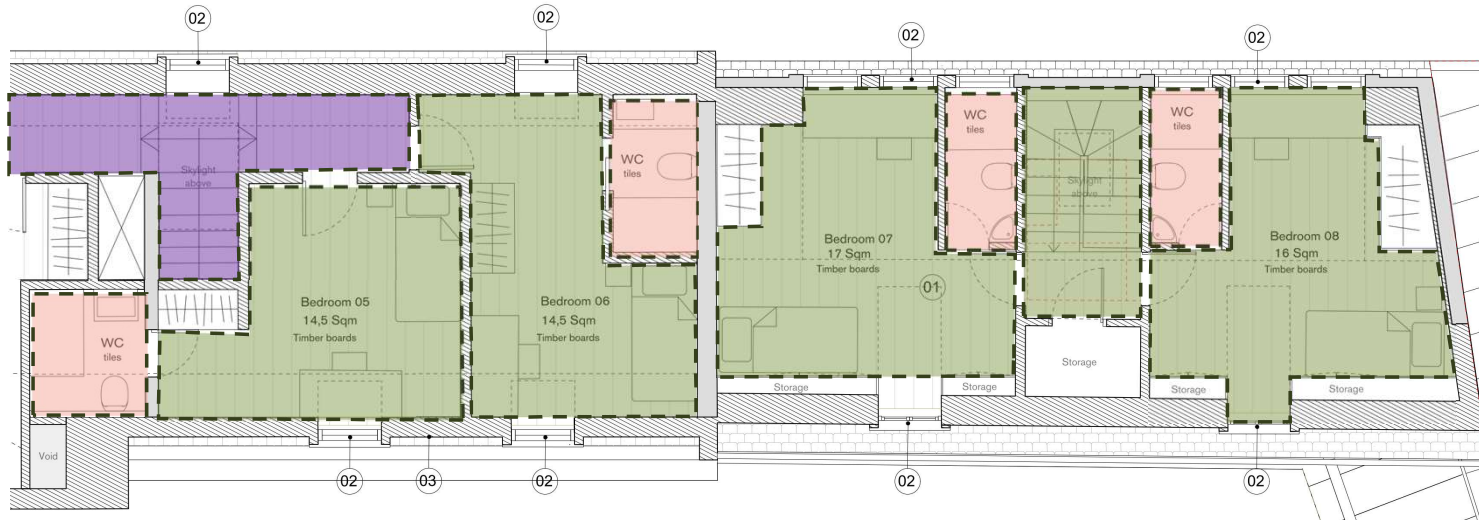
Mechanical Supply Ventilation via MVHR + natural ventilation from openable windows



Mechanical Extract Ventilation to be returned to the MVHR unit



Natural ventilation via infiltration and/or openable windows/doors/rooflights

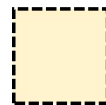
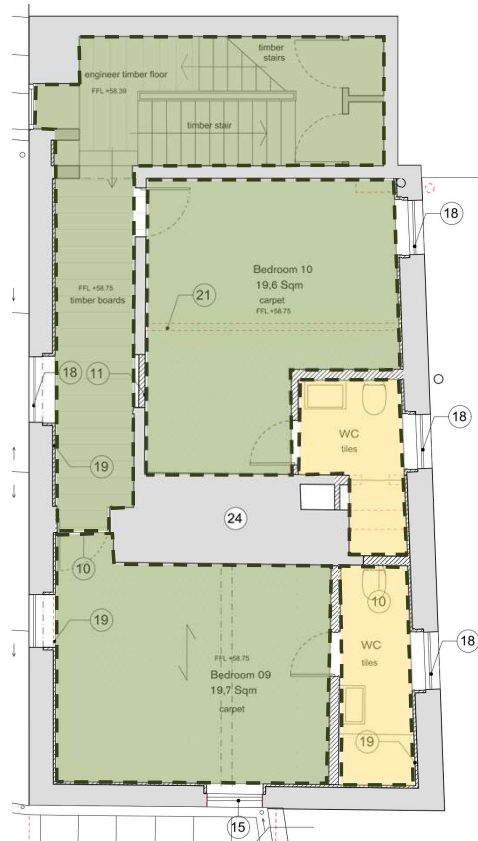


INTERNAL VENTILATION RATES:

Based on the Building Regulations the various spaces require either a continuous ventilation rate, or a demand based ventilation rate intermittently. Part F : Minimum Ventilation Rates:

	Room Description	Intermittent Extract	Continuous Extract
Buildings other than dwellings	Bathrooms	15 l/s	8 l/s
	WC	6 l/s	6 l/s
	Kitchen	<ul style="list-style-type: none"> 30 l/s adjacent to hob 60 l/s elsewhere 	13 l/s
	Utility Spaces	30 l/s	8 l/s

Ventilation Strategy – M Floor Main House



Ventilation from centralized extract fan + natural ventilation from openable windows/ doors



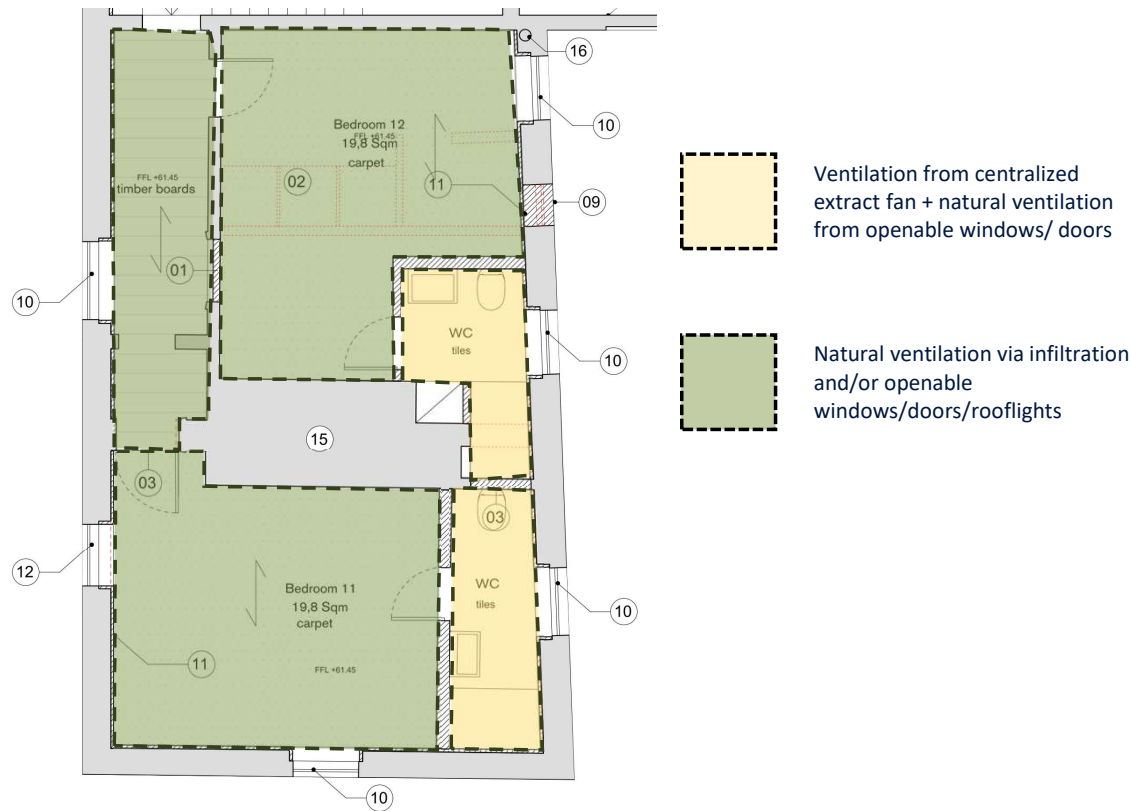
Natural ventilation via infiltration and/or openable windows/doors/rooflights

INTERNAL VENTILATION RATES:

Based on the Building Regulations the various spaces require either a continuous ventilation rate, or a demand based ventilation rate intermittently. Part F : Minimum Ventilation Rates:

	Room Description	Intermittent Extract	Continuous Extract
Buildings other than dwellings	Bathrooms	15 l/s	8 l/s
	WC	6 l/s	6 l/s
	Kitchen	<ul style="list-style-type: none"> 30 l/s adjacent to hob 60 l/s elsewhere 	13 l/s
	Utility Spaces	30 l/s	8 l/s

Ventilation Strategy – 1st Floor Main House 1



INTERNAL VENTILATION RATES:

Based on the Building Regulations the various spaces require either a continuous ventilation rate, or a demand based ventilation rate intermittently. Part F : Minimum Ventilation Rates:

	Room Description	Intermittent Extract	Continuous Extract
Buildings other than dwellings	Bathrooms	15 l/s	8 l/s
	WC	6 l/s	6 l/s
	Kitchen	<ul style="list-style-type: none"> • 30 l/s adjacent to hob • 60 l/s elsewhere 	13 l/s
	Utility Spaces	30 l/s	8 l/s

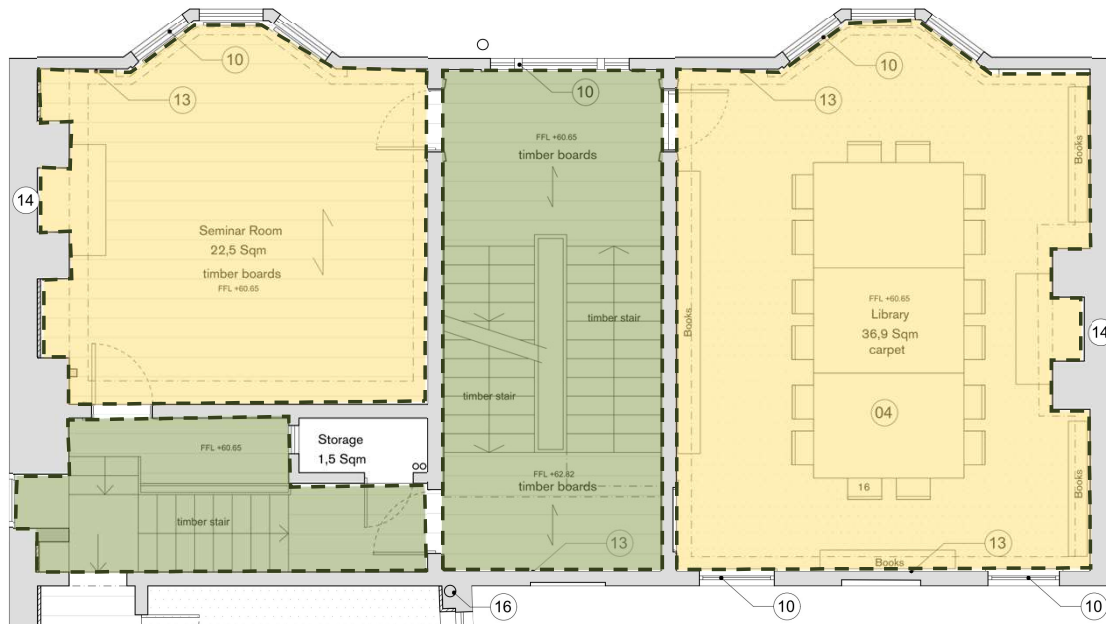
Ventilation Strategy – 1st Floor Main House 2



Ventilation from centralized extract fan + natural ventilation from openable windows/ doors



Natural ventilation via infiltration and/or openable windows/doors/rooflights

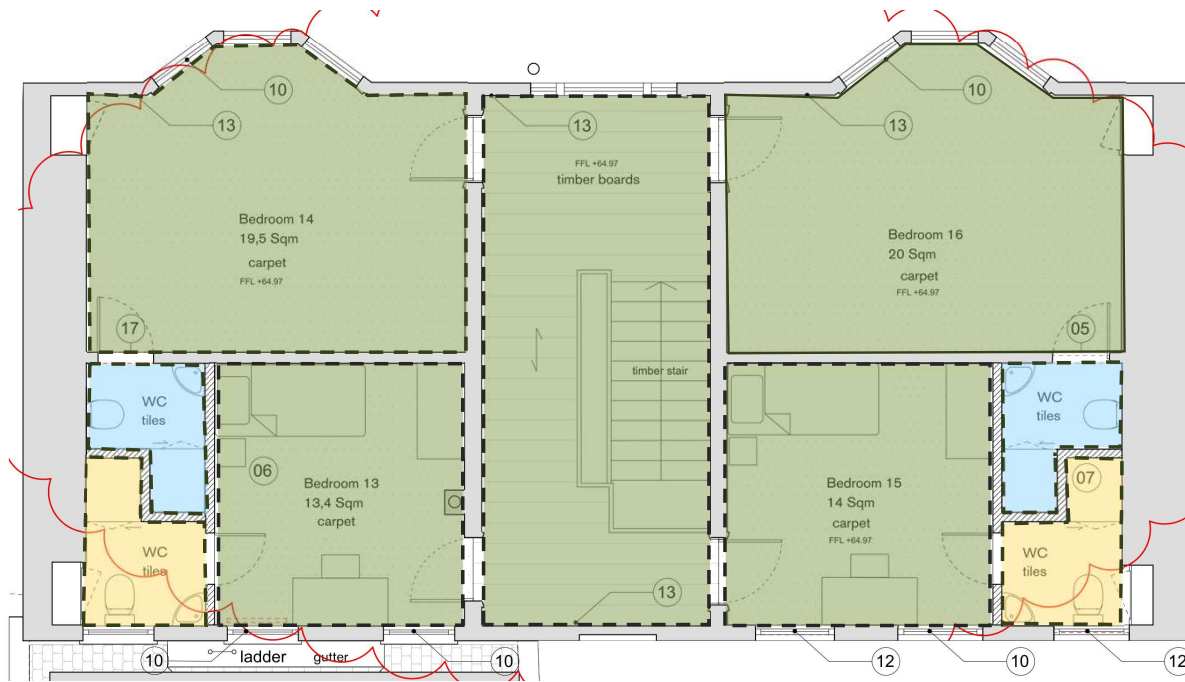
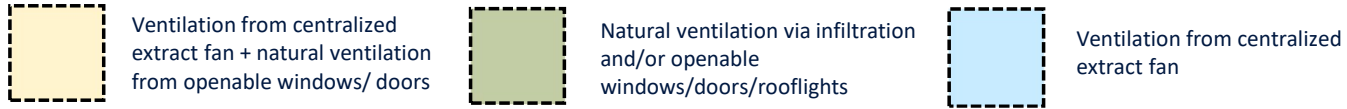


INTERNAL VENTILATION RATES:

Based on the Building Regulations the various spaces require either a continuous ventilation rate, or a demand based ventilation rate intermittently. Part F : Minimum Ventilation Rates:

	Room Description	Intermittent Extract	Continuous Extract
Buildings other than dwellings	Bathrooms	15 l/s	8 l/s
	WC	6 l/s	6 l/s
	Kitchen	<ul style="list-style-type: none"> • 30 l/s adjacent to hob • 60 l/s elsewhere 	13 l/s
	Utility Spaces	30 l/s	8 l/s

Ventilation Strategy – 2nd Floor Main House

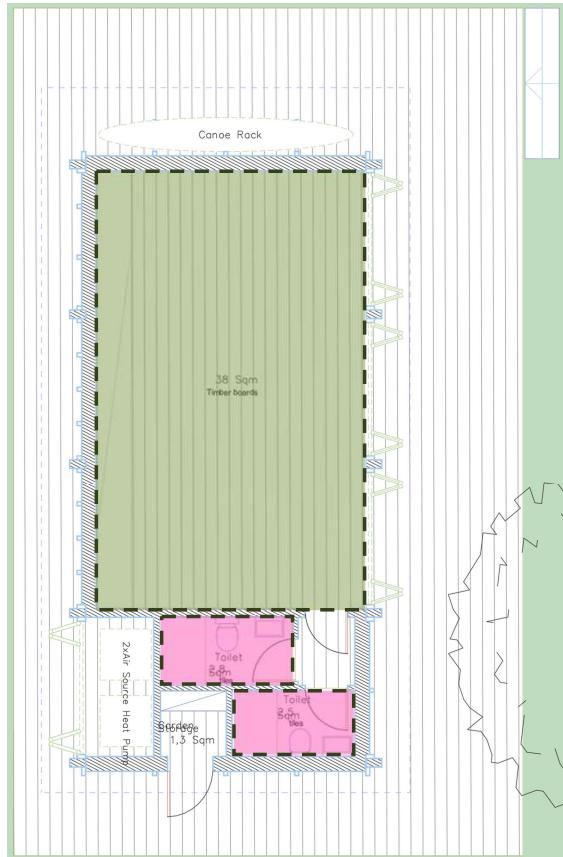



INTERNAL VENTILATION RATES:


Based on the Building Regulations the various spaces require either a continuous ventilation rate, or a demand based ventilation rate intermittently. Part F : Minimum Ventilation Rates:

	Room Description	Intermittent Extract	Continuous Extract
Buildings other than dwellings	Bathrooms	15 l/s	8 l/s
	WC	6 l/s	6 l/s
	Kitchen	<ul style="list-style-type: none"> 30 l/s adjacent to hob 60 l/s elsewhere 	13 l/s
	Utility Spaces	30 l/s	8 l/s

Ventilation Strategy – Boathouse



 Natural ventilation via infiltration and/or openable windows/doors/rooflights

 Mechanical extract only, provided from central extract plant or decentralized with intermittent fan

INTERNAL VENTILATION RATES:

Based on the Building Regulations the various spaces require either a continuous ventilation rate, or a demand based ventilation rate intermittently. Part F : Minimum Ventilation Rates:

	Room Description	Intermittent Extract	Continuous Extract
Buildings other than dwellings	Bathrooms	15 l/s	8 l/s
	WC	6 l/s	6 l/s
	Kitchen	<ul style="list-style-type: none"> 30 l/s adjacent to hob 60 l/s elsewhere 	13 l/s
	Utility Spaces	30 l/s	8 l/s