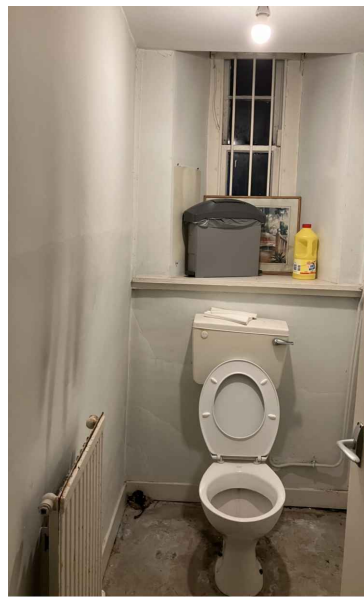
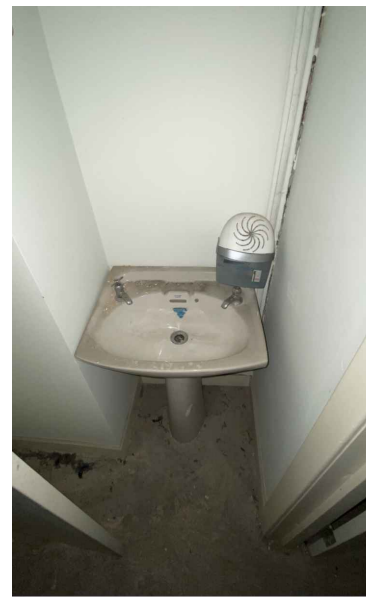


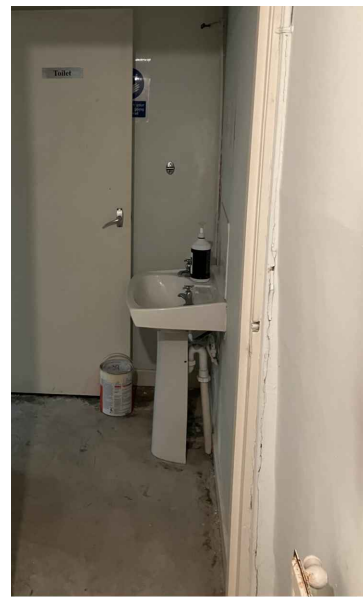
B001 - Access to Front Lightwell



B002 - w/c



B003 - hallway sink



B004 - w/c sink



B005 - Front Office Space



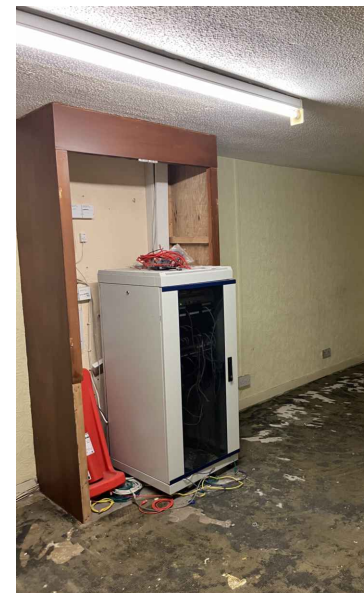
B005 - Office Space



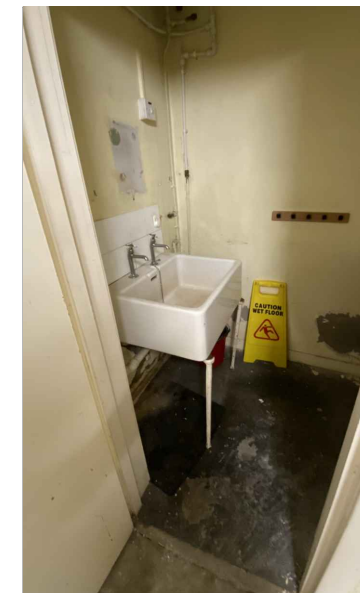
B006 - Stairwell



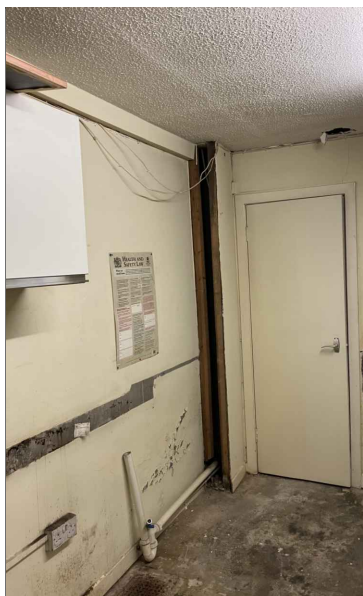
B007 - Rear Office



B007 - Rear Office



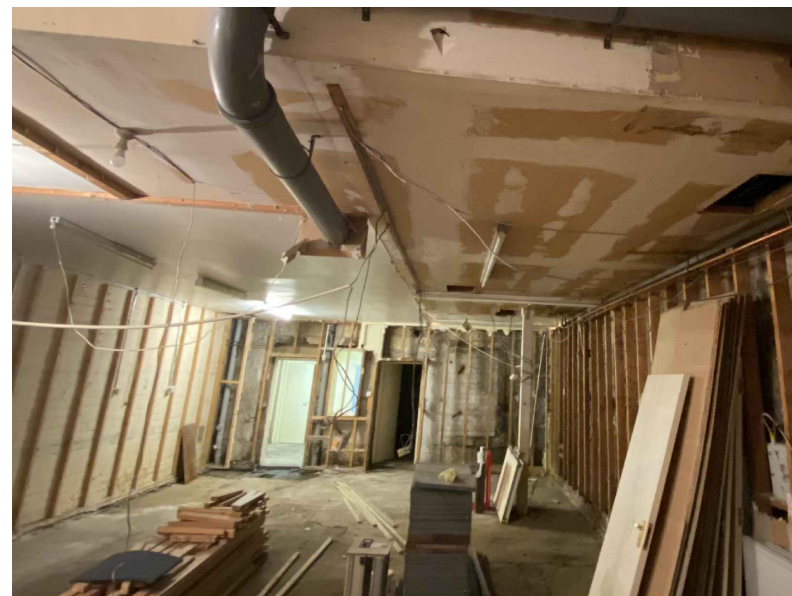
B008 - Cupboard



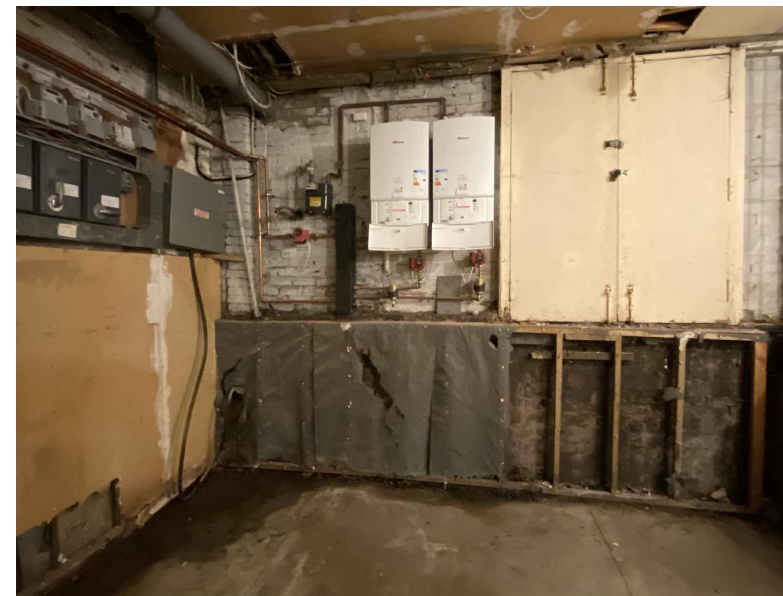
B009 - Office Space



B009 - Office Space



B010 - Rear Basement



B010 - Rear Basement

Notes

Do not scale from this drawing. All dimensions to be checked on site prior to construction and any discrepancies reported to the Architect. Copyright reserved.

Revisions

Status

PLANNING

Client

Mr Tim Zhou

Project

71 Berkeley Street  
Glasgow  
G3 7DX

Title

Photographic Record of Existing  
Interiors Sheet 1 of 4

Scale	Size	Date	Drawn	Checked
NTS	A3	Mar 24	FH	JDF



Allison Architecture  
13 Royal Crescent  
Glasgow G3 7SL

t: +44 (0)141 353 1082  
e: hello@allisonarchitecture.co.uk  
www.allisonarchitecture.co.uk

Project No.	Drawing No.	Rev.
24005	40-001	.