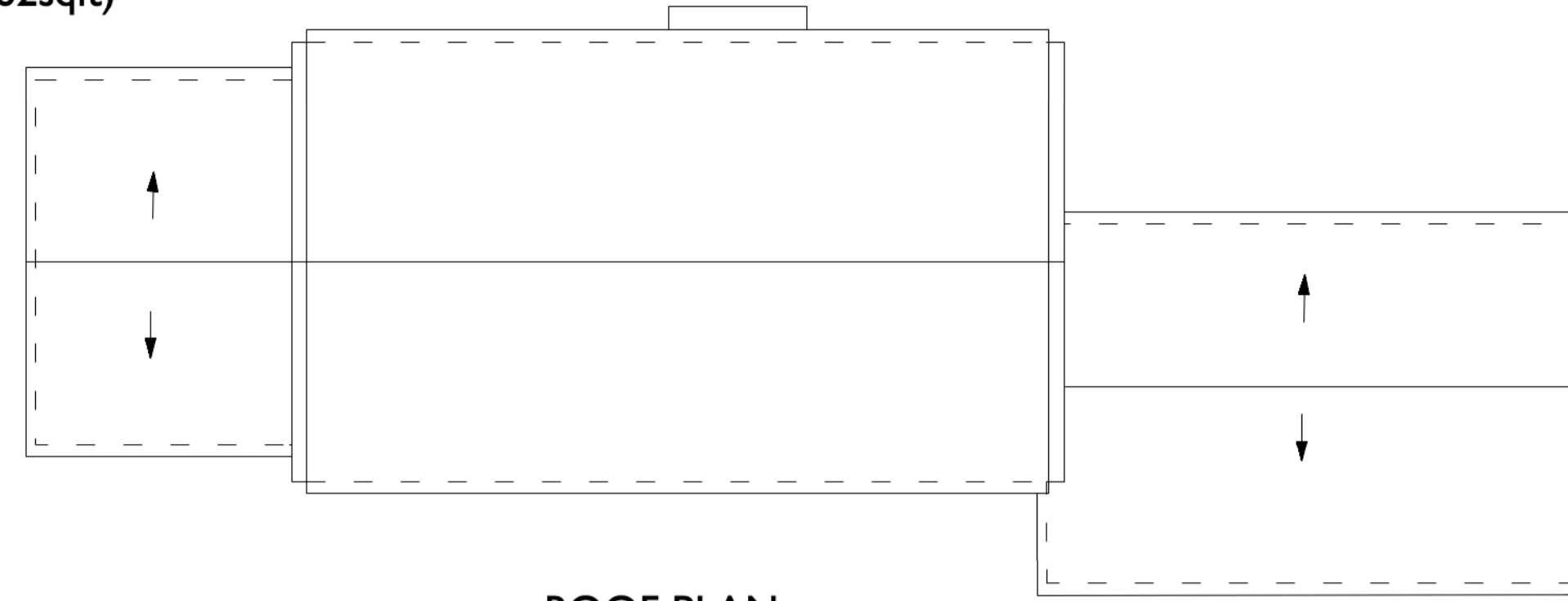


**PROPOSED PLOT I
PLANS, ELEVATIONS & TYPICAL SECTIONS**

GIA House = 195.22m² (2101sqft)
4 Bed / 7 Person
Carport GIA = 43m² (462sqft)

All areas are approximate only.



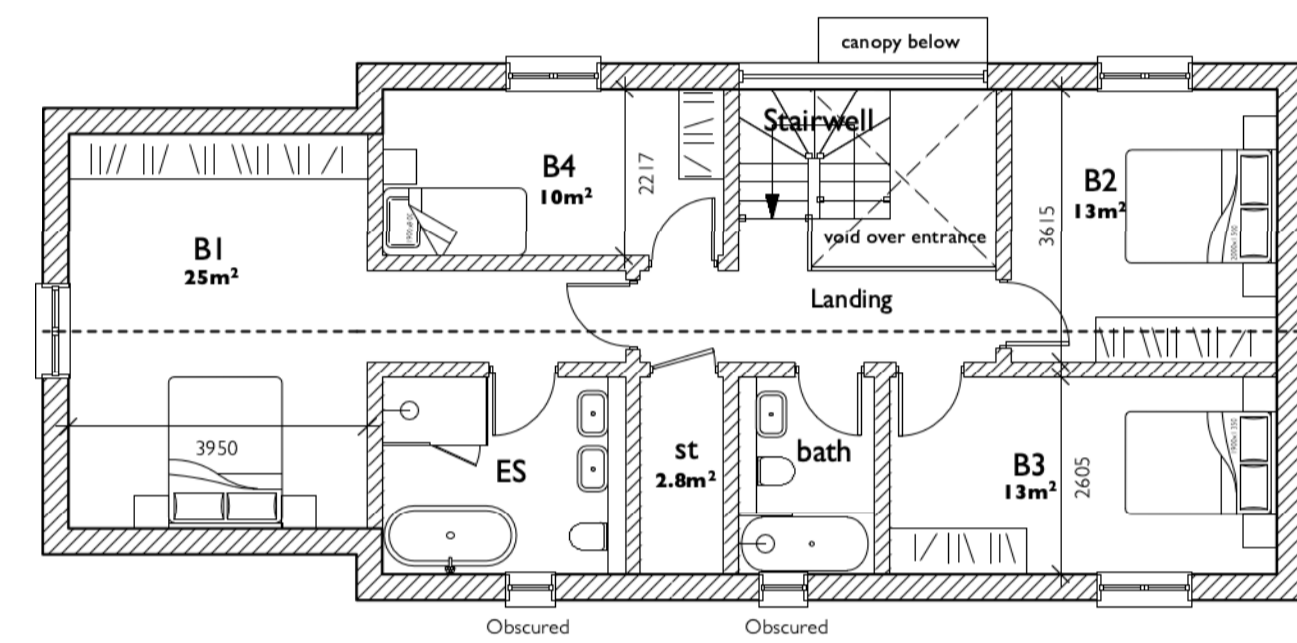
ROOF PLAN



NORTH FACING ELEVATION



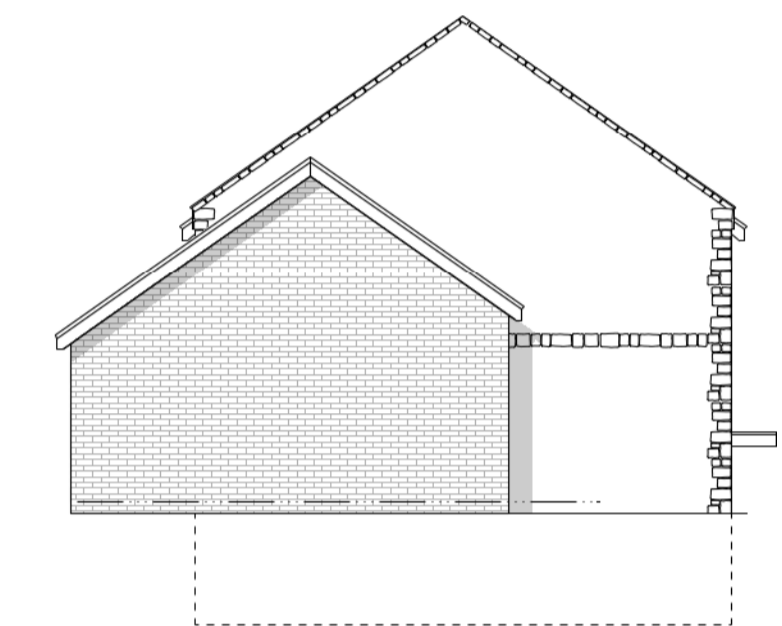
WEST FACING ELEVATION



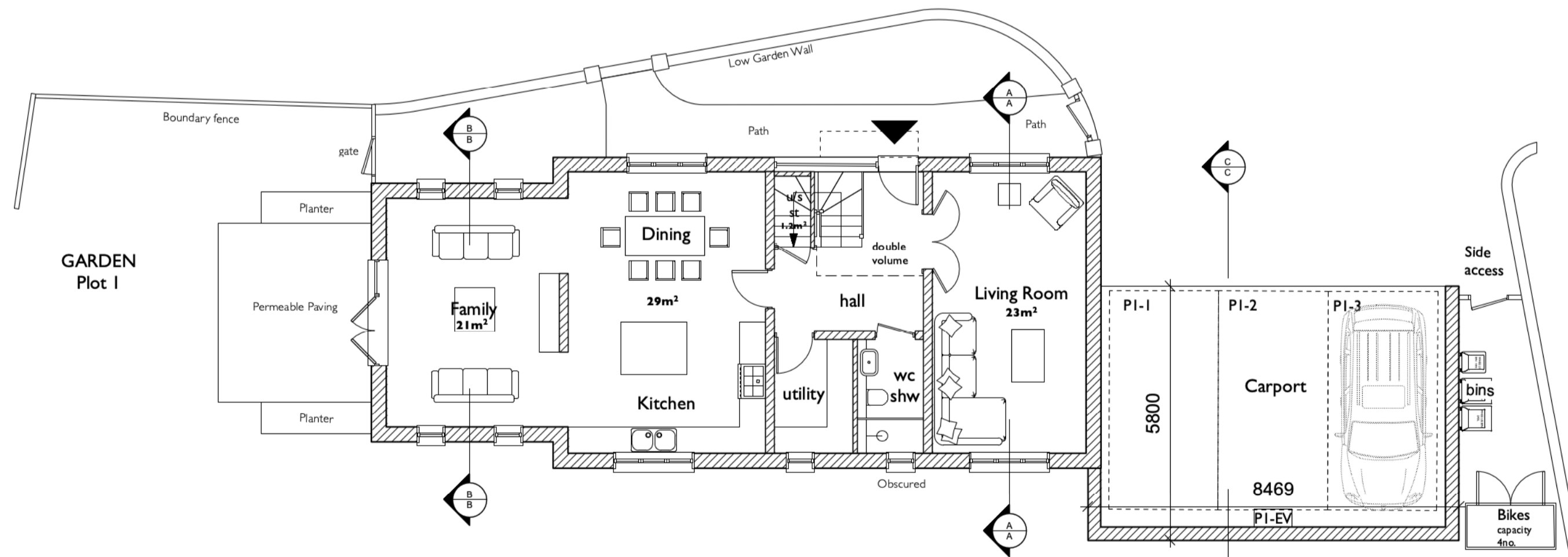
FIRST FLOOR PLAN



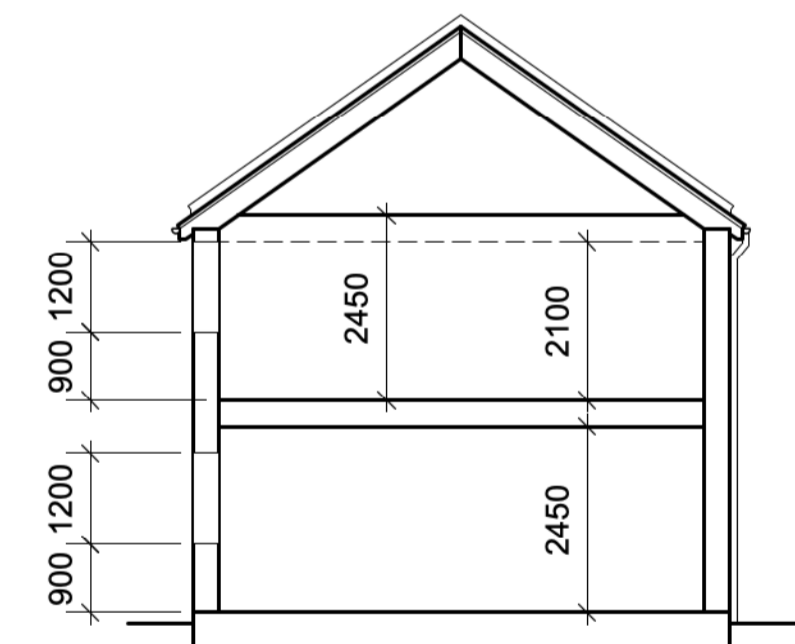
SOUTH FACING ELEVATION



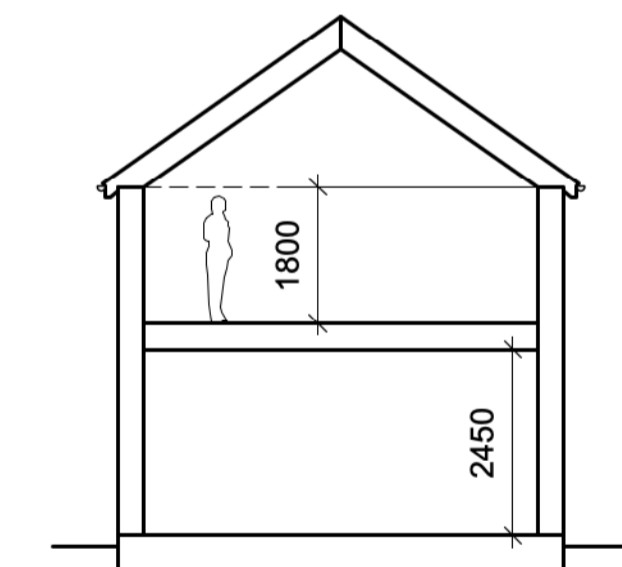
EAST FACING ELEVATION



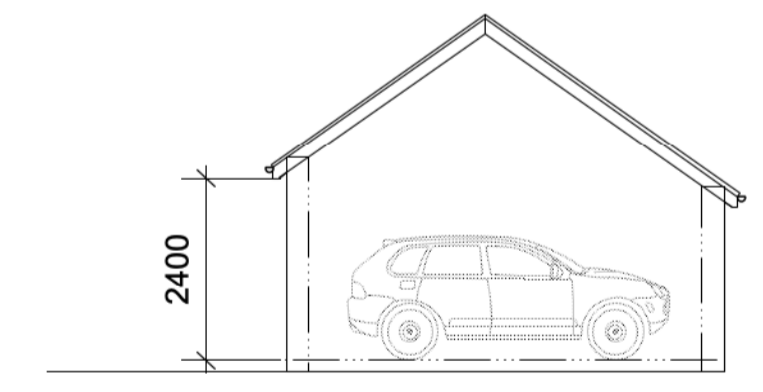
GROUND FLOOR PLAN



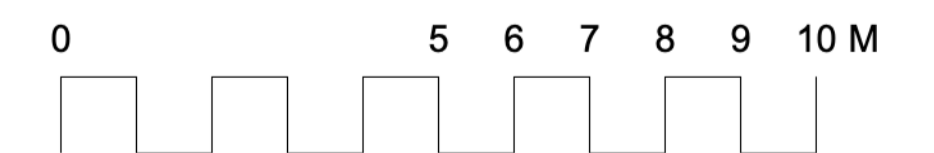
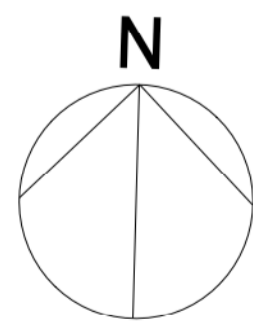
TYPICAL SECTION A-A



TYPICAL SECTION B-B



TYPICAL SECTION C-C
carport



Unit 25, BASEPOINT
EVESHAM
WORCESTERSHIRE
WR11 1GP
t : 020 7328 2576
Email: info@hubarchitects.co.uk

All dimensions are to be checked on site before commencement of works.

All sizes and dimensions to any structural elements are indicative only. See structural engineer's drawings for actual sizes/dimensions.

Sizes of and dimensions to any service elements are indicative only. See service engineer's drawings for actual sizes/dimensions.

This drawing to be read in conjunction with all relevant Architect's drawings, specifications and other consultants' information.

Rev.	Date.	Description.
A	2312-14	General drawing update to carport & for coordination.
B	2401-04	Update to gable style & pathway access linked to garage.
C	2401-15	Update to gable window.
D	2401-23	General drawing update following client comments.
E	2403-26	General drawing update.

Initial:
JC
JC
JC
JC
JC

PLANNING

Project:	Land East of Blackwell Close, Earls Barton.	Drawing:	PROPOSED PLOT I - House
Scale:	1:100 @A1	DWG:	1365 - PL - 200
Date:	Nov '23	Revision:	E