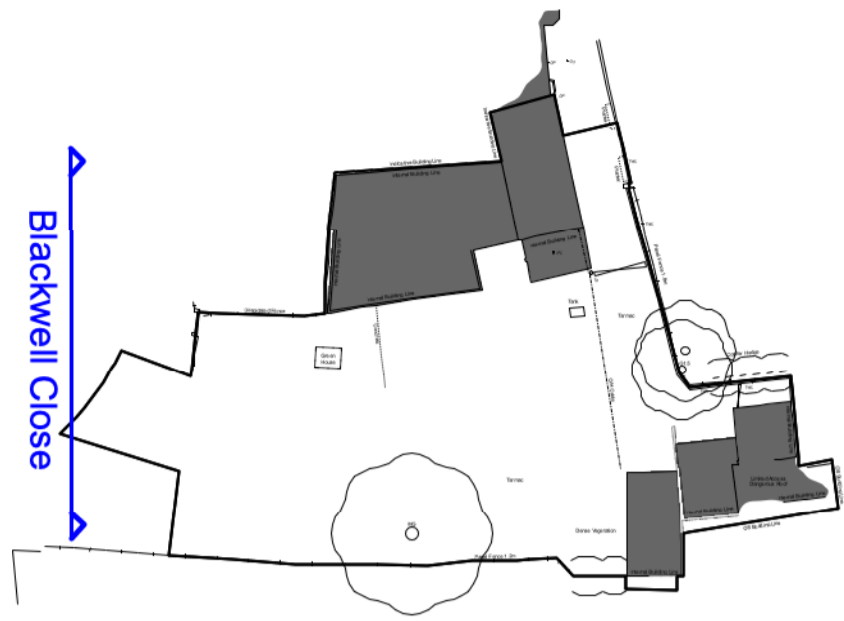
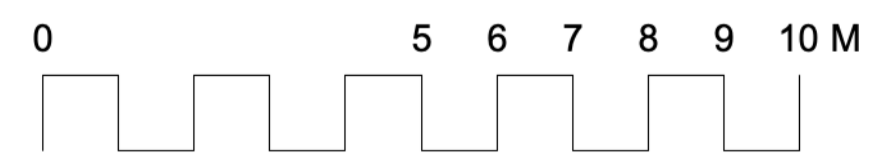
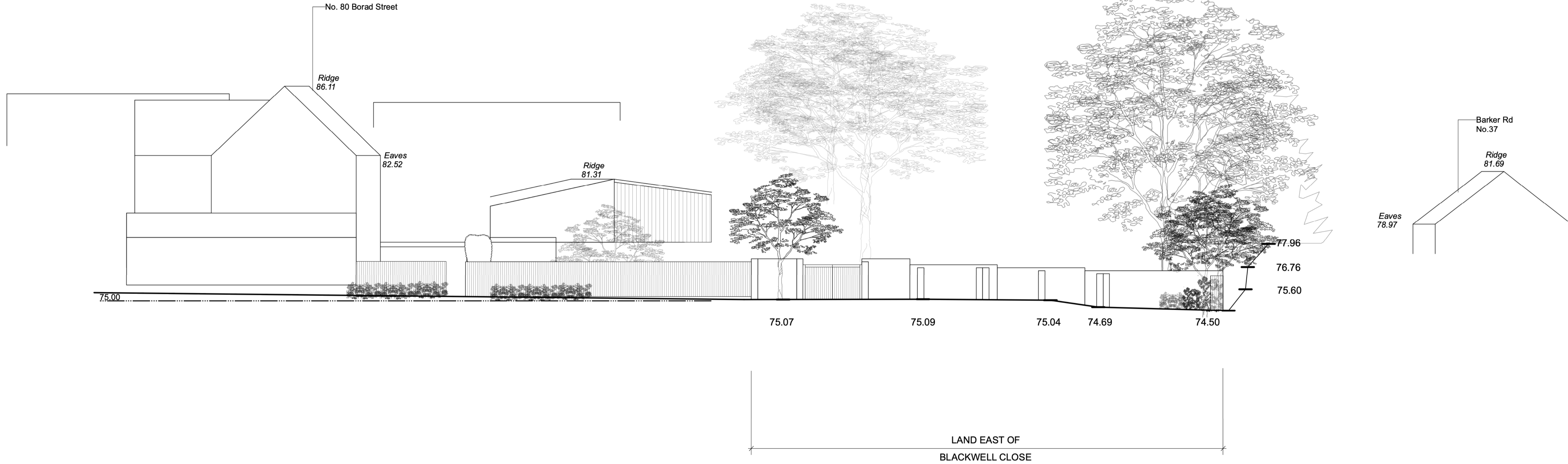


**EXISTING STREET SCENE -
BLACKWELL CLOSE**



ELEVATION KEY.
n.t.s



Unit 25, BASEPOINT
EVESHAM
WORCESTERSHIRE
WR11 1GP
t : 020 7328 2576
Email: info@hubarchitects.co.uk

All dimensions are to be checked on site before commencement of works.

All sizes and dimensions to any structural elements are indicative only. See structural engineer's drawings for actual sizes/dimensions.

Sizes of and dimensions to any service elements are indicative only. See service engineer's drawings for actual sizes/dimensions.

This drawing to be read in conjunction with all relevant Architect's drawings, specifications and other consultants' information.

Rev.	Date.
A	2401-04
B	2403-26

Description.
Key plan updated.
General drawing update.

Initial.
JC
JC

EXISTING

Project:	Land East of Blackwell Close, Earls Barton.	Drawing:	EXISTING Street Scene Elevation
Scale:	1:100 @A1	DWG:	1365 - EX - 007
Date:	Dec ' 23	Revision:	B