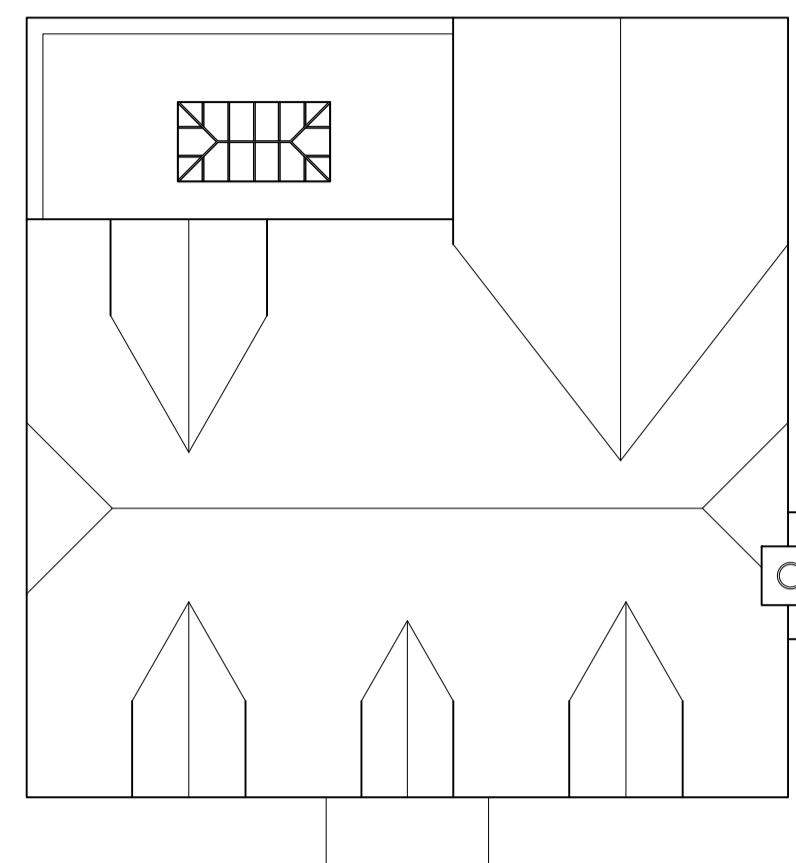


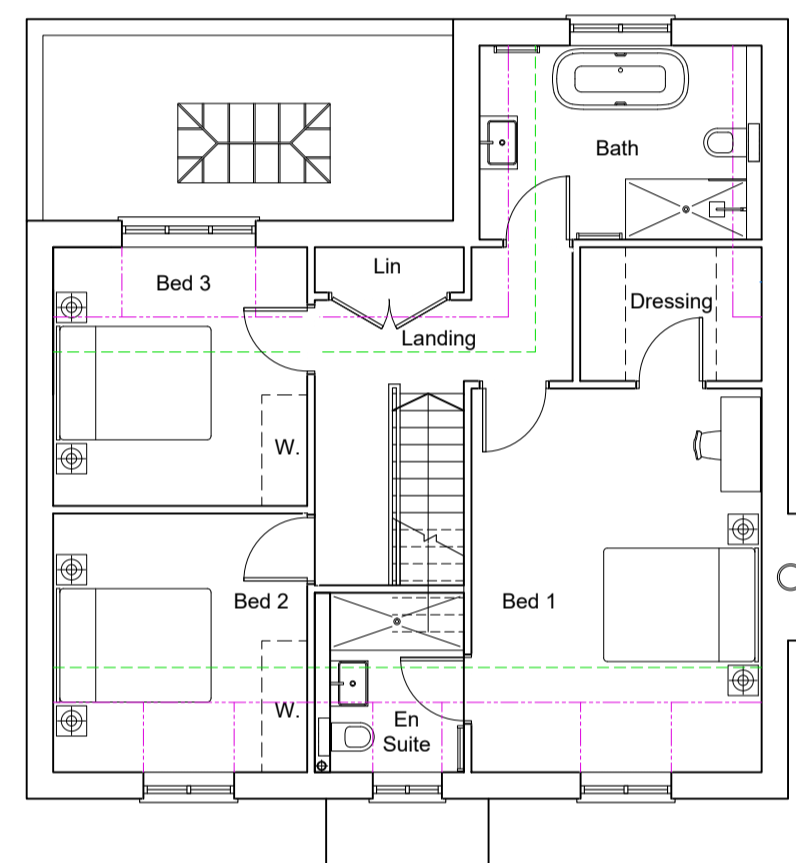
**Nationally Described Space Standards  
(3 Bed 6 person 2 storey)**

Gross Internal Area (requirement 102m <sup>2</sup> )	165m <sup>2</sup>
Built-in storage * (requirement 2.5m <sup>3</sup> )	4.0m <sup>3</sup>
Bed 1 - Double/twin (req. 11.5m <sup>2</sup> , 2.75m wide)	19.45m <sup>2</sup> , 3.8m
Bed 2 - Double/twin (req. 11.5m <sup>2</sup> , 2.55m wide)	11.5m <sup>2</sup> , 3.36m
Bed 3 - Double/twin (req. 11.5m <sup>2</sup> , 2.55m wide)	11.5m <sup>2</sup> , 3.36m

\*Dressing rooms / walk-in wardrobes and wardrobes not included in storage figure above

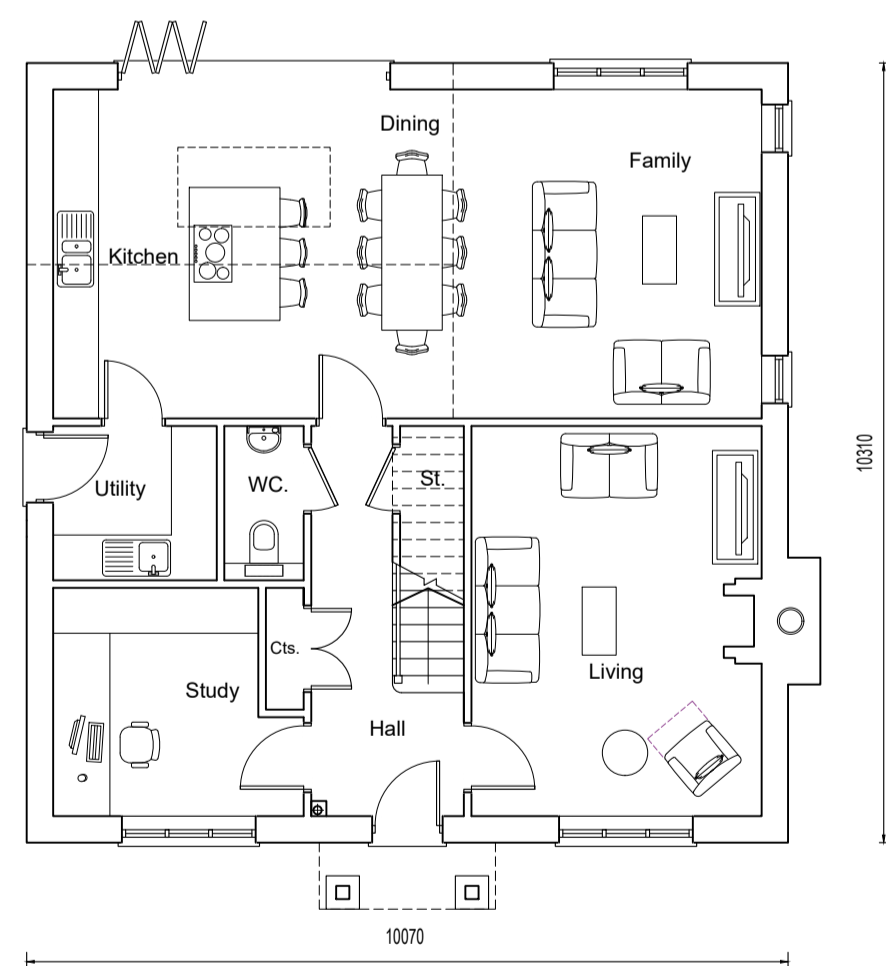


Roof Plan



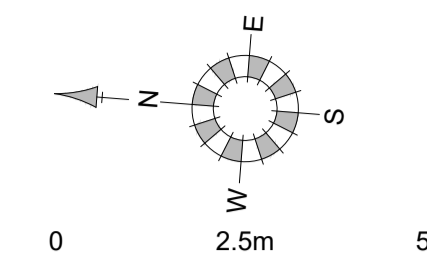
First Floor Plan

Plot 3



Ground Floor Plan

Plot 3



Skelling Heights	
1500 Skelling Line	-----
1800 Skelling Line	-----
2100 Skelling Line	-----
2400 Ceiling Line	-----
NB - Above based on 40.0° roof pitch.	



Front Elevation Plot 3



Side Elevation



Rear Elevation Plot 3



Side Elevation

REV.	DATE	REVISIONS:	BY	REV.	DATE	REVISIONS:	BY	REV.	DATE	REVISIONS:	BY	STATUS:
A	05/04/24	NDSS Table added										

**Planning**

CLIENT:	BlackOnyx Projects	PROJECT:	Sheeples House, West Horsely, KT24 6AL
SCALE:	1:100 (A1 ORIGINAL)	DRAWING:	Proposed Plans and Elevations Plot 3
DRAWN:	RPO	23125	P112
DATE:	24.01.24		A

