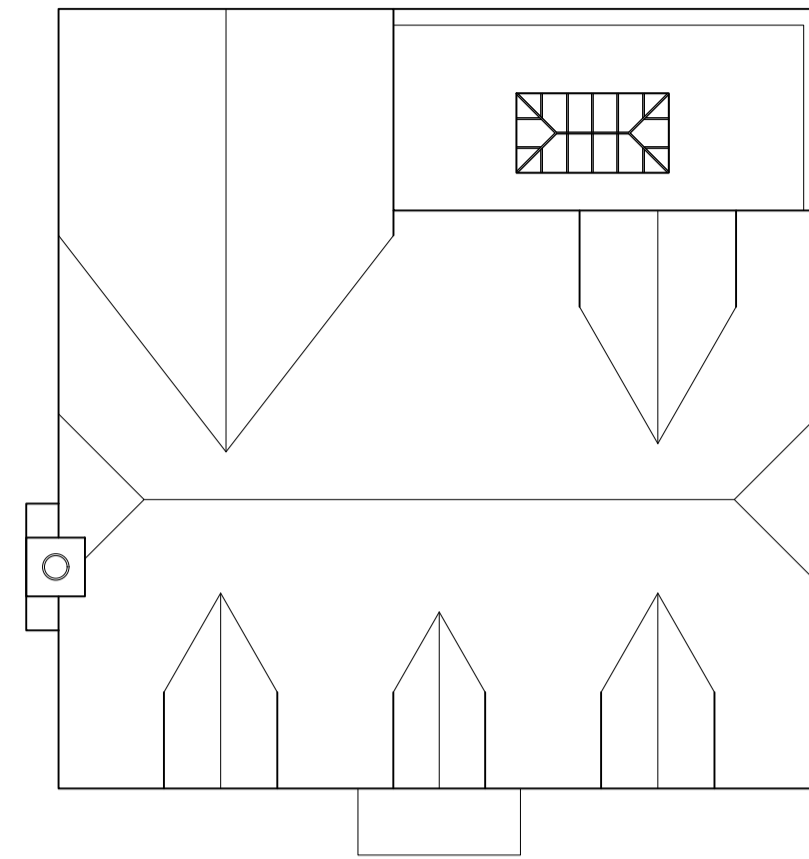
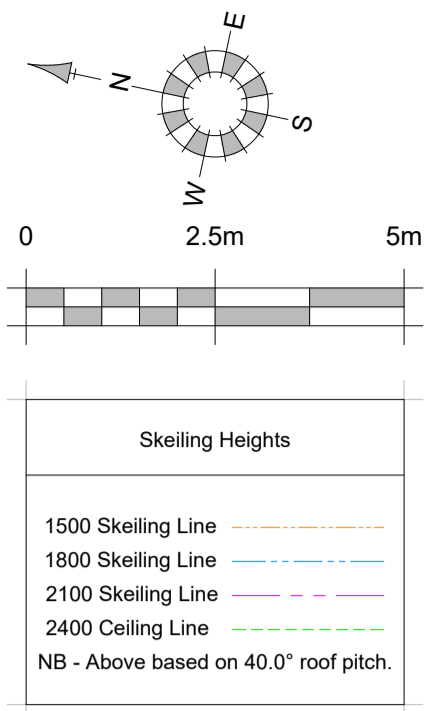


Nationally Described Space Standards (3 Bed 6 person 2 storey)	
Gross Internal Area (requirement 102m <sup>2</sup> )	165m <sup>2</sup>
Built-in storage * (requirement 2.5m <sup>2</sup> )	4.0m <sup>2</sup>
Bed 1 - Double twin (req. 11.5m <sup>2</sup> , 2.75m wide)	19.45m <sup>2</sup> , 3.8m
Bed 2 - Double twin (req. 11.5m <sup>2</sup> , 2.55m wide)	11.5m <sup>2</sup> , 3.36m
Bed 3 - Double twin (req. 11.5m <sup>2</sup> , 2.55m wide)	11.5m <sup>2</sup> , 3.36m

\*Dressing rooms / walk-in wardrobes and wardrobes not included in storage figure above



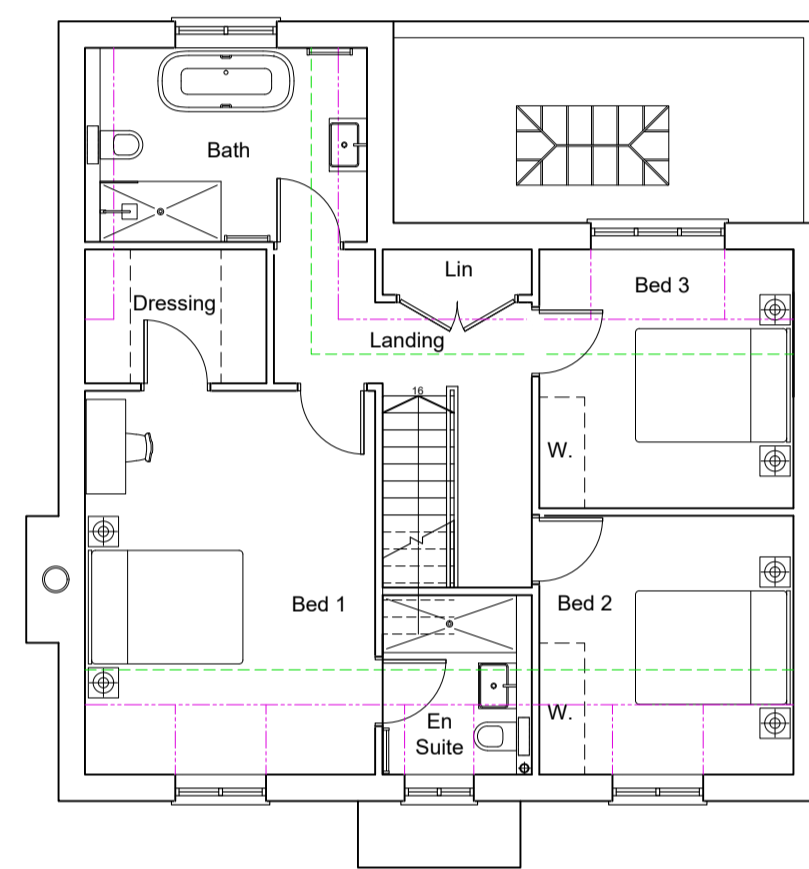
Roof Plan



Front Elevation Plot 4



Side Elevation



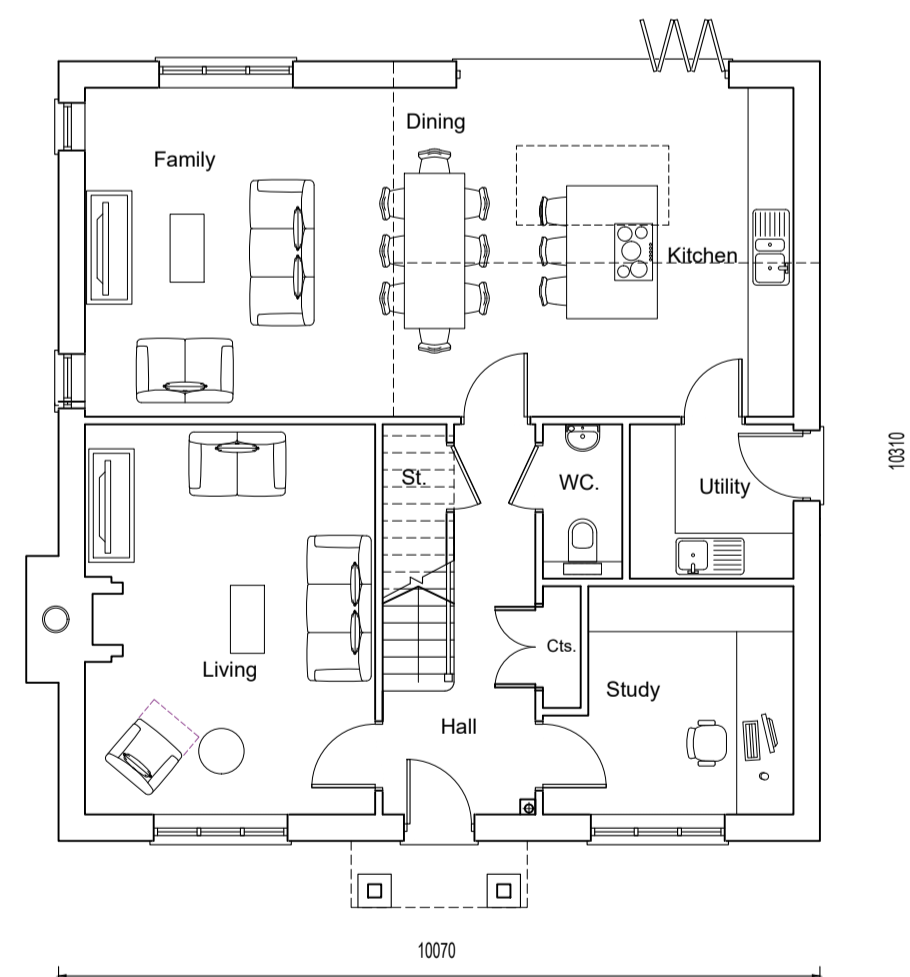
First Floor Plan  
Plot 4



Rear Elevation Plot 4



Side Elevation



Ground Floor Plan  
Plot 4

REV.	DATE	REVISIONS:	BY	REV.	DATE	REVISIONS:	BY	REV.	DATE	REVISIONS:	BY	STATUS:
A	05/04/24	NDSS Table added	NR									

Planning

CLIENT:	BlackOnyx Projects	PROJECT:	Shepleas House, West Horsely, KT24 6AL
SCALE:	1:100 (A1 ORIGINAL)	DRAWING:	Proposed Plans and Elevations Plot 4
DRAWN:	RPO	23125	P113
DATE:	19.03.24		A

Broadmeade House, Farnham Business Park,  
Weydon Lane, Farnham, Surrey GU9 8QT.  
info@osparchitecture.com www.osparchitecture.com  
Tel: 01252 267878