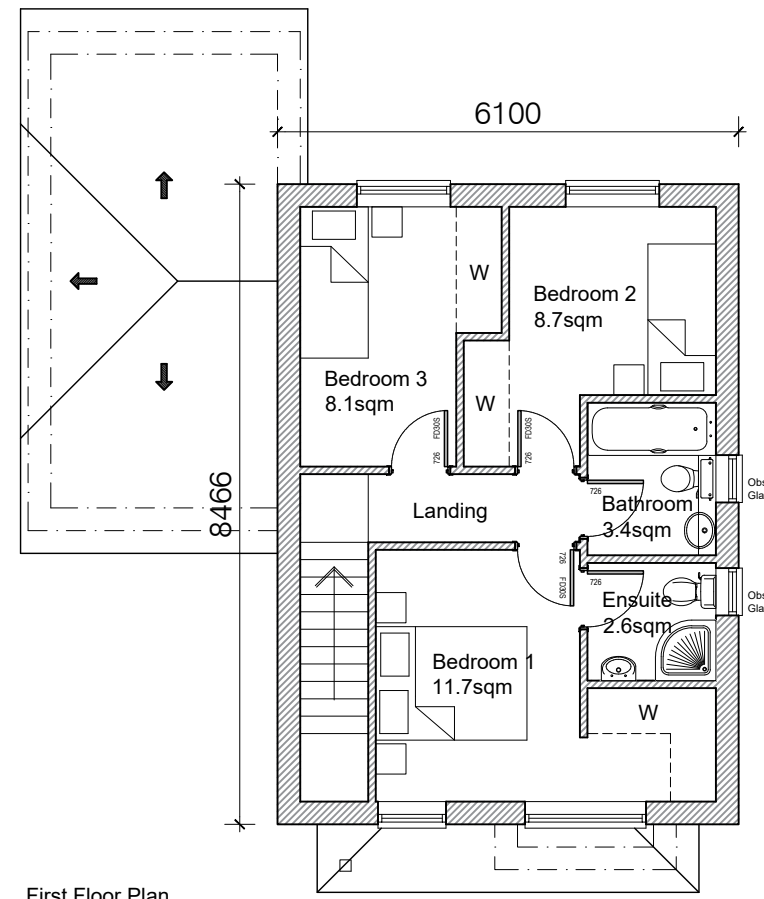
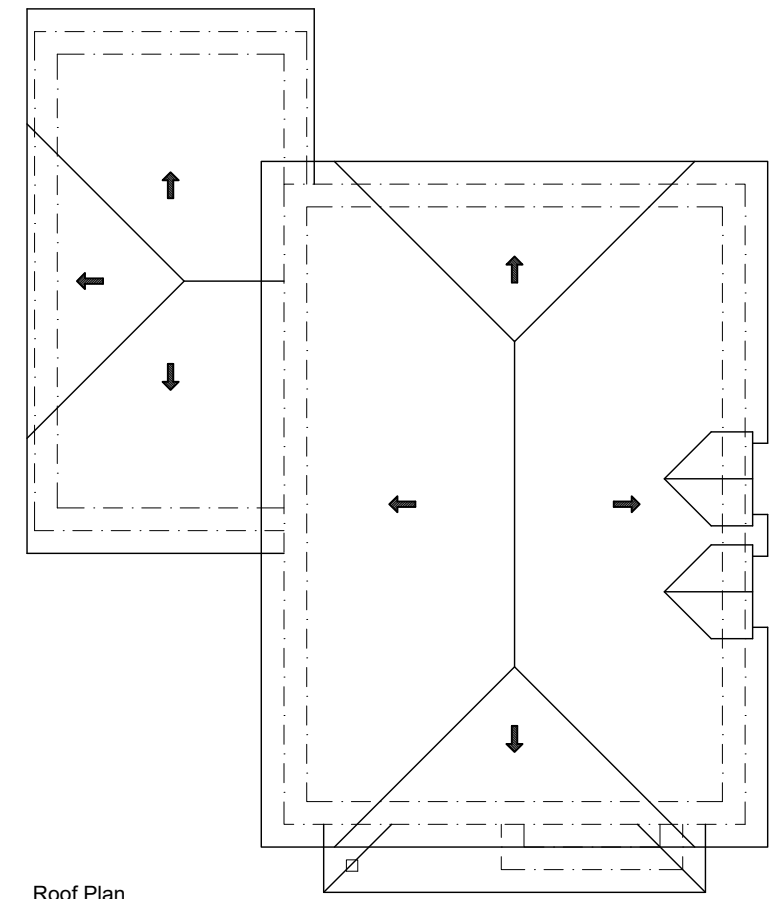


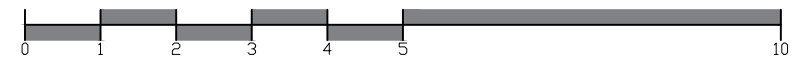
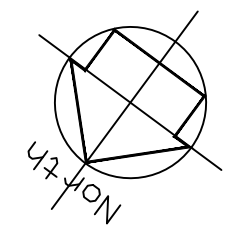
Ground Floor Plan  
44.3 sqm  
Garage - 18.0 sqm



First Floor Plan  
43.3 sqm



Roof Plan  
Total GIA - 87.6 sqm  
Total GIA with Garage - 105.3 sqm



© This drawing is copyright.  
It is sent to you in confidence and must not be reproduced or disclosed to third parties without our prior permission.  
Do not scale from this drawing, other than for Local Authority Planning purposes.  
This drawing is to be read in conjunction with all relevant consultants, specialist manufacturers drawings and specifications.  
Any discrepancies in dimensions or details on or between these drawings should be drawn to our attention.  
All dimensions are in millimetres unless noted otherwise.

REV	DATE	DESCRIPTION	INITIAL	CHECKED
<b>PLANNING</b>				



harding rose architects

CLIENT	
PROJECT <b>Woodstock Villas, Frimley Road, Ash Vale, Guildford, GU21 5PP</b>	
TITLE <b>Proposed Plans</b>	
SCALE <b>1:100 @A3</b>	DATE <b>16.04.24</b>
DRAWN <b>HB</b>	PROJECT NO. <b>23.1114</b>
<b>P.202</b>	<b>A</b>