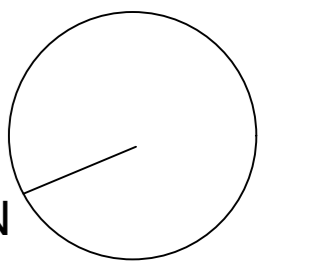


**52-53 OLD STEINE**  
Brighton

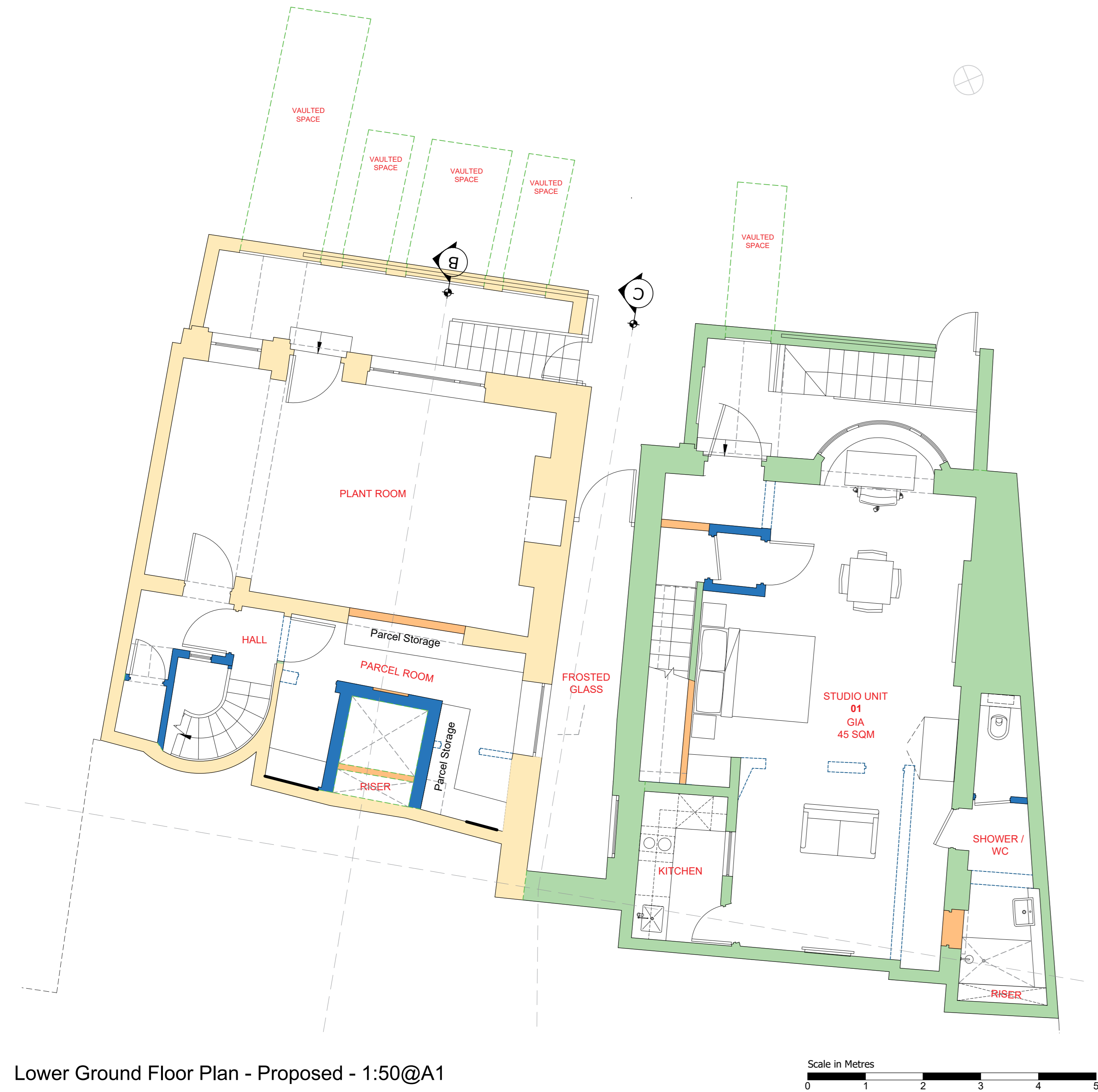
**THIS IS A GRADE II LISTED BUILDING**  
HISTORIC ENGLAND LIST ENTRY: 1380668 - 52  
HISTORIC ENGLAND LIST ENTRY: 1380669 - 53

notes  
Please note: These are planning application stage drawings not construction drawings and should be treated as such.

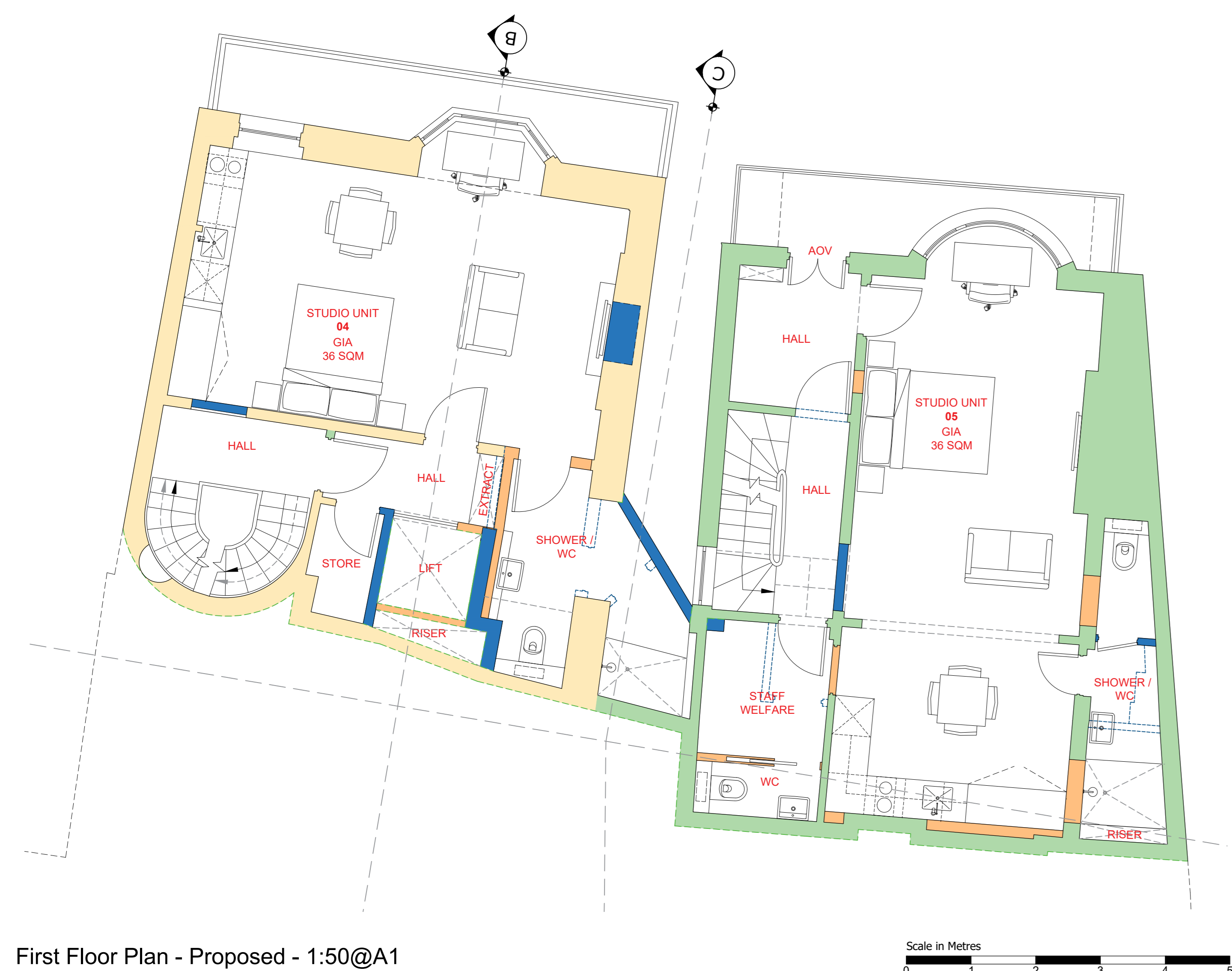


**KEY**

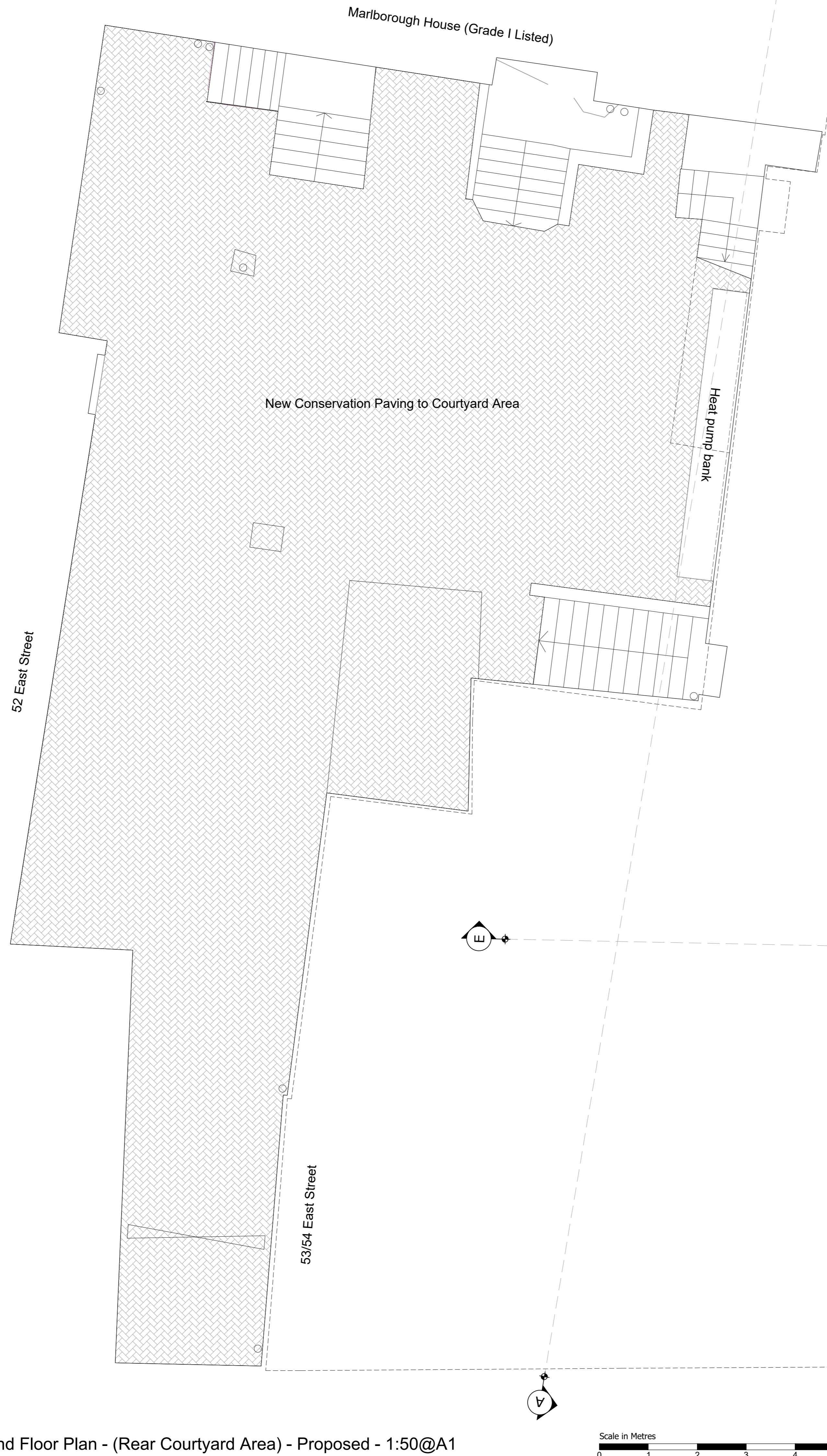
- Late 18th Century
- Early 19th Century
- Mid / Late 19th Century
- 20th Century Alterations
- Assumed structure demise (beyond survey remit)
- Proposed demolitions
- Proposed newbuild



Lower Ground Floor Plan - Proposed - 1:50@A1



First Floor Plan - Proposed - 1:50@A1



Ground Floor Plan - (Rear Courtyard Area) - Proposed - 1:50@A1



Ground Floor Plan (Front) - Proposed - 1:50@A1

- REV H - Consultant input updates 24/02/21
- REV G - Consultant input updates 24/01/29
- REV F - Consultant input updates 24/01/22
- REV E - Consultant input updates 24/01/15
- REV D - Vaulted Space outline added 24/01/03
- REV C - Consultant input updates 23/12/19
- REV B - Consultant input updates 23/12/15
- REV A - 231208 Consultant input updates 23/12/08

**EDWS**Architects

26 Mikes Road Brighton BN1 5NQ M 07979532275  
E: eden@edwsarchitects.com W: www.edwsarchitects.co.uk

J O B	CHECKED
52-53 Old Steine Brighton BN1 1NH	PT
	DRAWN
	ES
CLIENT	DATE
Jenscogroup	22.03.28
	SCALE
	1:50 @ A0
DRAWING	REVISION
Floor Plans Proposed	H
	NUMBER
	7181050