



LEGEND

- APPLICATION SITE
- Planting Proposals
- TREE PLANTING
- AMENITY GRASS SEEDING/TURFING
- ORNAMENTAL SHRUBS
- HEDEGEROW

NB: For details of planting refer to CSAs/5103/107

Hardworks

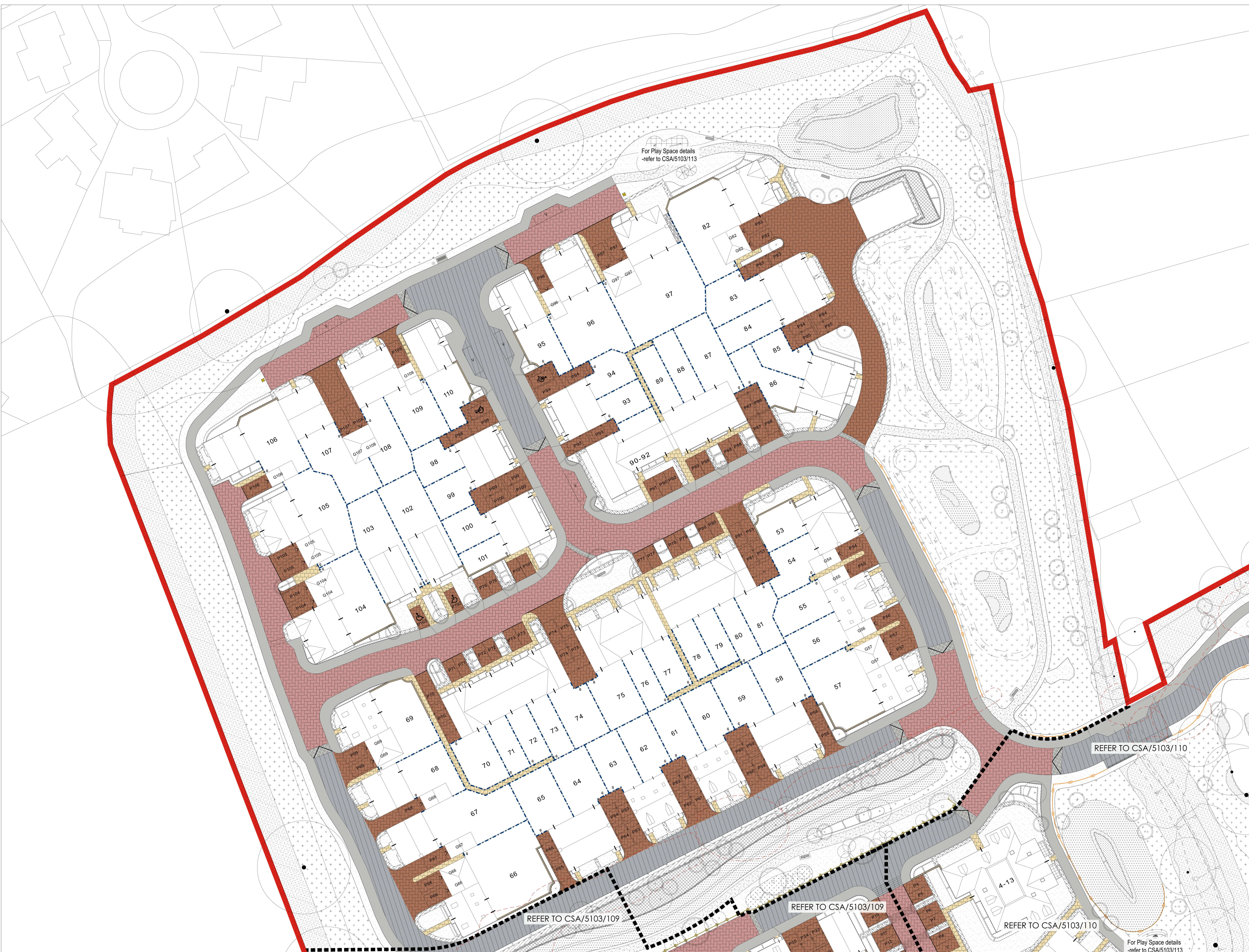
- BITUMINOUS MACADAM SURFACE: to vehicular areas to engineers' details.
- BITUMINOUS MACADAM SURFACE: to footpaths/cycleways to engineers' specification.
- CONCRETE BLOCK PAVING: Porcelain block paving by Marshalls Ltd, concrete block, 200 x 100 x 60mm, with smooth finish, chamfered, bevelled, burnt ends, laid herringbone pattern, 200mm sub-base course of porous blocks to peripheral edge (where required).
- PERFORATED CONCRETE BLOCK PAVING: Porcelain block paving by Marshalls Ltd, concrete block, 200 x 100 x 60mm, ribbed block, with smooth finish, chamfered, bevelled ends, laid herringbone pattern, 200mm sub-base course of standard blocks (same colour) to peripheral edge (where required).
- NB: In porous areas, a service margin of standard blocks of matching colour may be required to facilitate buried services.
- CONCRETE SETT PAVING: Concrete of 60mm concrete block paving by Marshalls Ltd, 100 x 100 x 60mm, laid black bond, smooth finish, silver grey colour, NB: Kwik-Tile Concrete Area (200mm x 400mm) by Marshalls Ltd, silver grey colour, laid flush either side of kerbside edge.
- CONCRETE PAVING SLABS: 1) Travertine 150mm thick concrete paving slabs by Marshalls Ltd, 450 x 450 x 40mm thick, wet cut, smooth, even finish, laid black bond.

Boundary Treatment

- BRICK WALL: 1500mm high, 210mm wide brick wall, brick on edge coping, incorporating 100mm wide base to match adjacent dwellings.
- CLOSE-BOARD FENCING: 1500mm high close-boarded timber fence, treated softwood (min. 15% life span).
- FEATURED METAL FENCING: 1500mm high feature metal fence, dark charcoal beams, tongue and groove construction.
- RUSTIC POST & RAIL FENCING: 1100mm rustic post and rail timber fence.
- SQUARE TIMBER BOLLARD: 100 x 100 x 1800mm high (above ground level) square timber bollard by Jacksons Fencing Ltd or equal and approved.
- REAR ACCESS GATE: 1500mm high timber gate (min. 15% life span), incorporating steel hinges and lock back and padlock bar.
- SQUARE TIMBER POST: 200 x 200 x 1800mm high (above ground level) square solid hardwood timber post, treated with "Easy Rail Top" finish, rough sawn, by Stone Fencing, Check Ltd or equal and approved.

Notes:

- 1) All surface materials are to be installed as specified or equal or approved specification to be agreed with Landscape Architect.
- 2) All works to be commenced immediately upon receipt of the relevant planning permission (initially 12 months or less from the date of issue of the planning permission).
- 3) All work shall be carried out in accordance with the relevant specification (initially 12 months or less from the date of issue of the planning permission).
- 4) All work shall be carried out in accordance with the relevant specification (initially 12 months or less from the date of issue of the planning permission).
- 5) All work shall be carried out in accordance with the relevant specification (initially 12 months or less from the date of issue of the planning permission).
- 6) The extent and specification of porous paving surfaces is subject to related drainage design.



For Play Space details - refer to CSA/5103/113

REFER TO CSA/5103/110

REFER TO CSA/5103/109

REFER TO CSA/5103/109

REFER TO CSA/5103/110

For Play Space details - refer to CSA/5103/113

Rev	Date	By	Description
D	15/02/24	AM	Drawn by P55/17 nationalised expanded
C	26/07/24	GC	Planning for Plot P2 amended further
A	26/10/24	GC	Planning for Plot P2 amended further
A	27/04/22	AM	Updated Site Context

FOR PLANNING

CSA
environmental

Dives Barrs, High Street,
Aldwincote, Northants NN16 9JF

01462 743647
caroline@csaenvironmental.co.uk
w csaenvironmental.co.uk

Project: Lolesworth Fields, East Horley

Title: Hard Landscape Proposals
Sheet 1 of 3

Client: Taylor Wimpey UK Ltd.

Scale	1:250 @ A0	Drawn	AM
Date	Oct 2021	Checked	GC
Drawing No	CSA/5103/108	Rev	D