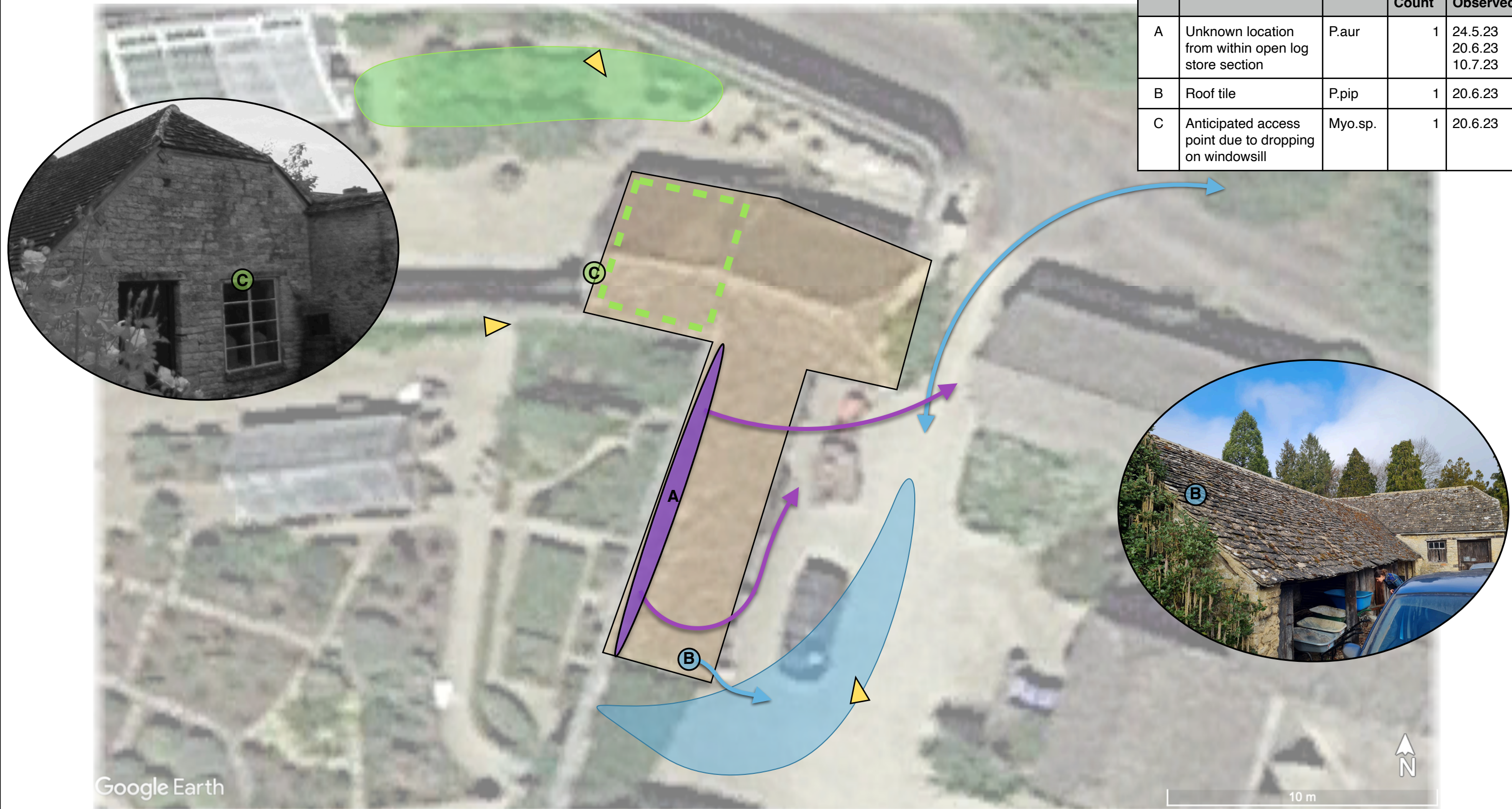


Ref	Feature	Sp.	Peak Count	Dates Observed
A	Unknown location from within open log store section	P.aur	1	24.5.23 20.6.23 10.7.23
B	Roof tile	P.pip	1	20.6.23
C	Anticipated access point due to dropping on windowsill	Myo.sp.	1	20.6.23



*NOTE Areas are indicative and are not shown to exact scale.

	Building surveyed		Area of continuous bat activity (coloured by species)	Bat Species	
	Surveyor location		Outline of basement identified as a roost (coloured by species)		Common Pipistrelle
	Emergence/re-entry location (coloured by species)				Brown Long-eared
	Bat flight path (coloured by species)				Myotis sp.

DARWIN
ECOLOGY

integrating nature conservation

Info@darwin-ecology.co.uk
www.darwin-ecology.co.uk

Project: Woodleys, B3 Log Store

Figure 7: Emergence/ Re-entry Survey Results

Date: September 2023