

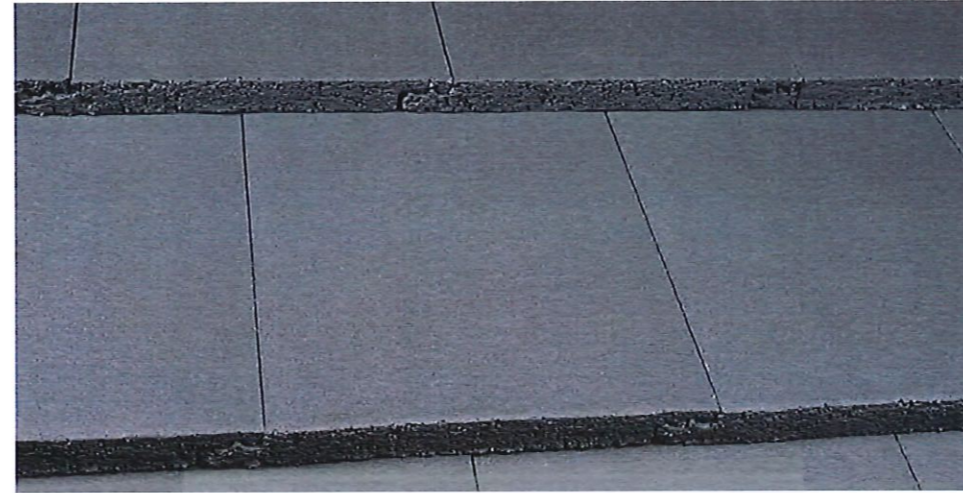
**Light Type 1**

**Thames IP54 external 10w LED light**  
 Black finish  
 Wall mounted downlight  
 Rear elevations

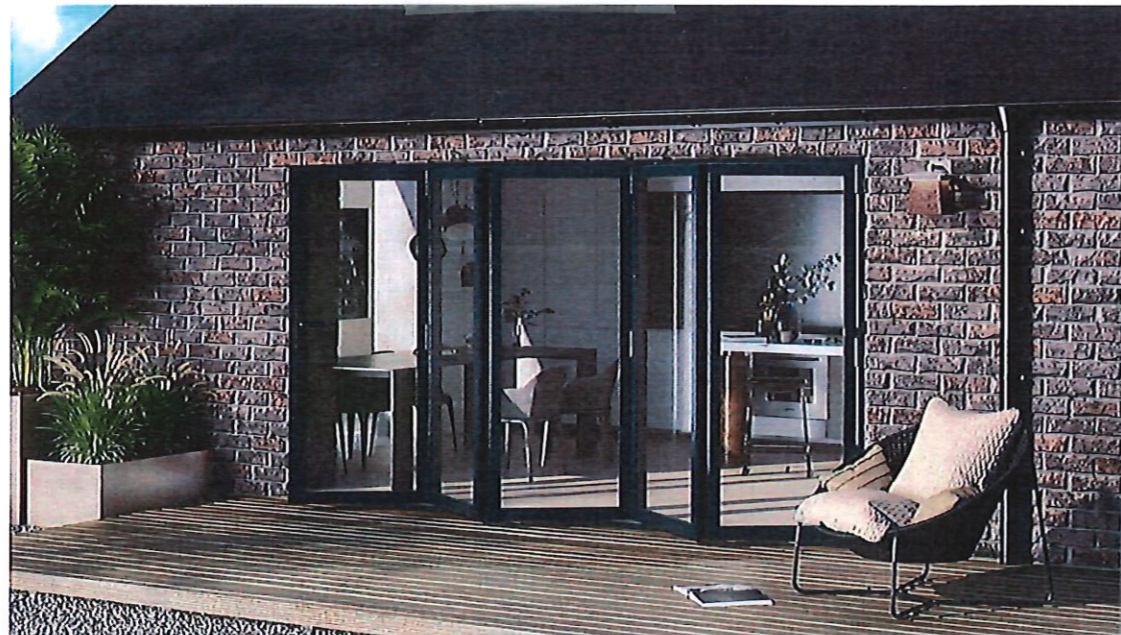
From [www.lightsupplier.co.uk](http://www.lightsupplier.co.uk)



**Stained Hardwood Entrance Doors  
 For New Houses**  
<https://woodenluxury.co.uk>



**Roof Tiles**  
 Marley Smooth Grey  
<https://www.myersbuildingsupplies.co.uk>



**Grey aluminium framed Doors  
 New Houses (rear)**  
<https://fastdoors.co.uk>



**Brick Wall Areas**  
 Michelmersh Hampshire Facing Brick  
 Brick walls  
<https://www.mbhplc.co.uk/products/hampi>

**Materials Sheet 1**

**525A Chessington Road**

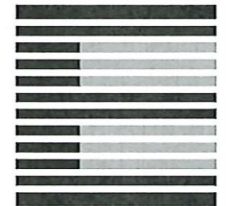
Only use figured dimensions. All dimensions are to be checked prior to use. This drawing remains the copyright of Eurohaus Ltd. and may not be reproduced without their permission. Unauthorised reproduction is a breach of copyright. All discrepancies are to be reported prior to construction.

**NOTES RELATING TO THIS DRAWING**

Do not use this drawing to build from without it being noted as issued for 'Construction' in the title panel below.

**REVISIONS**

DATE	DESCRIPTION OF REVISION.	BY	REV.



**EUROHAUS**  
 ENGLAND & GERMANY

[WWW.EUROHAUS.CO.UK](http://WWW.EUROHAUS.CO.UK)  
[WWW.EUROHAUS-PRODUCTS.DE](http://WWW.EUROHAUS-PRODUCTS.DE)

ARCHITECTURE  
 CONSTRUCTION CONSULTANTS  
 PROPERTY SERVICES

PROJECT	525A Chessington Road KT19 9JB
CLIENT	B. Morais V. Tehrani
TITLE	Materials Sheet 1
DRAWN BY	TM
SCALE	NTS
DATE	April 2024
ISSUE FOR	Planning
CHECKED	AJM

DRNG. NO.	0379/ 200	Rev.	
-----------	-----------	------	--

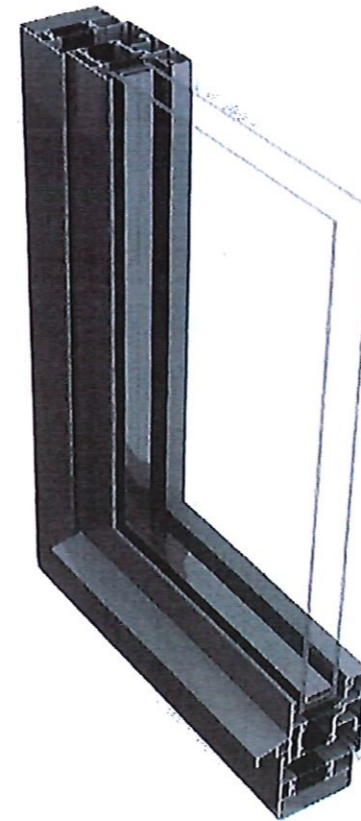
THIS DRAWING IS THE COPYRIGHT OF EUROHAUS LTD. ONLY THOSE WITH WHOM WE HAVE CONTRACTED MAY COPY OR USE IT. NO LIABILITY IS ACCEPTED FOR UNAUTHORISED USE.



**Flashings**  
Calder Code 4 lead



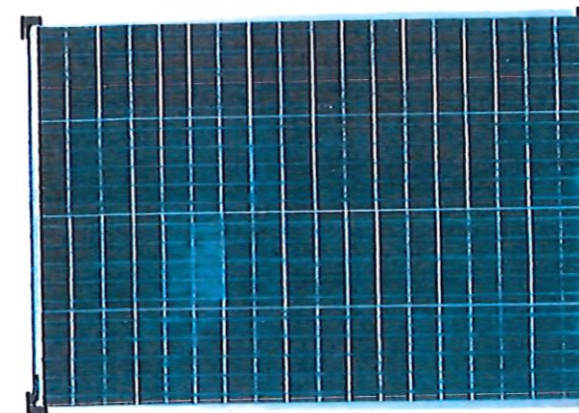
**Render Wall Areas**  
White silicone based render. (TC15)  
<https://www.k-rend.co.uk>



**Grey Metal Windows**  
For New Houses  
<https://www.alu-tec.co.uk/windows/tilt-turn>



**Grey Aluminium Box Gutter and Pipes**  
New Houses  
<https://www.guttercrest.co.uk/downpipes>



**Panels**  
Unlike most solar thermal panels, and most other renewable energy technologies, photovoltaic panels are "zero carbon" in use.  
This development proposal is well suited to photovoltaic panel technology. the flat roof to the building should allow for minimal over-shading, and has easy access for maintenance.

**Details Of Solar Panels**

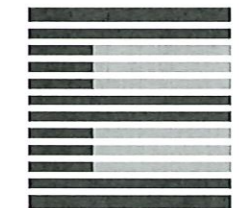
Only use figured dimensions. All dimensions are to be checked prior to use. This drawing remains the copyright of Eurohaus Ltd. and may not be reproduced without their permission. Unauthorised reproduction is a breach of copyright. All discrepancies are to be reported prior to construction.

**NOTES RELATING TO THIS DRAWING**

Do not use this drawing to build from without it being noted as issued for 'Construction' in the title panel below.

**REVISIONS**

DATE	DESCRIPTION OF REVISION.	BY	REV.



**EUROHAUS**  
ENGLAND & GERMANY

WWW.EUROHAUS.CO.UK  
WWW.EUROHAUS-PRODUCTS.DE

ARCHITECTURE  
CONSTRUCTION CONSULTANTS  
PROPERTY SERVICES

PROJECT	525A Chessington Road KT19 9JB
CLIENT	B. Morais V. Tehrani
TITLE	Materials Sheet 2
DRAWN BY	TM
SCALE	NTS
DATE	April 2024
ISSUE FOR	Planning
CHECKED	AJM

DRNG. NO.	0379/ 201	Rev.	
-----------	-----------	------	--

THIS DRAWING IS THE COPYRIGHT OF EUROHAUS LTD. ONLY THOSE WITH WHOM WE HAVE CONTRACTED MAY COPY OR USE IT.  
NO LIABILITY IS ACCEPTED FOR UNAUTHORISED USE.

## DRIVELINE PRIORA

Driveway drainage has been made easier with this high performance and sustainable block paving. Driveline Priora is the perfect permeable alternative to the market leading Driveline 50. Available in six Driveline 50 colours, it retains its classic look but with a modern sustainable twist.

By using a Patented Priora Block Paving Driveway System, you can avoid the complicated and frustrating planning permission costs and delays.

Each 60mm block features the Marshalls unique patented 'Priora' nib design which allows surface water to pass between blocks into a specially calculated sub-base without compromising structural performance of the driveway.

For driveways with a steep Incline or specific installation and design requirements please contact Marshalls Technical Advisory Service on 0370 411 2233 for further assistance.

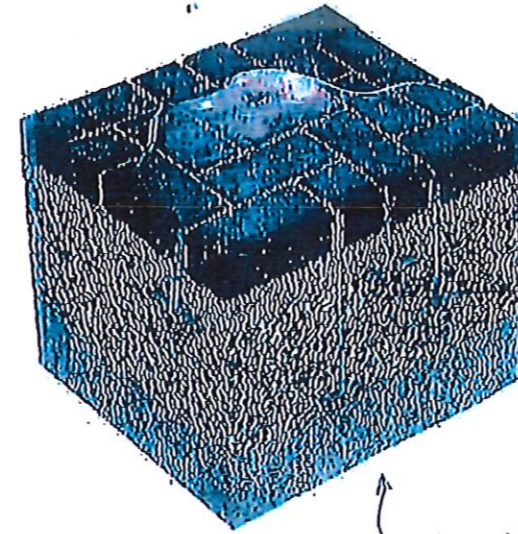
Sustainable urban driveway drainage.

Classic look with a modern sustainable twist which is available in six colours.

Patented drainage system which allows water to pass between blocks without compromising structural performance of the driveway.

Avoid complicated and frustrating planning permission delays and costs.

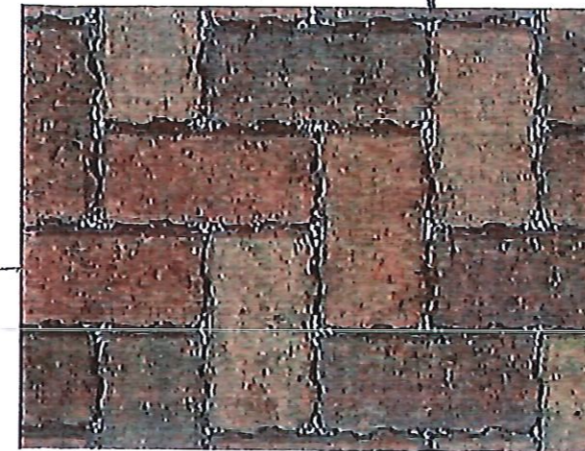
Driveline Priora is one of our permeable paving products within our driveways range.



65mm Marshalls open jointed paving on permeable coarse 50mm sand bed on 150mm small gravel sub base on compacted hardcore. Overall depth 400mm

Paving Type A

Bracken



Paving Type A

## Paving Type B

### Older Priora Concrete Block Permeable Paving

The patented nib on the edge of the Priora blocks creates voids through which water falls into a specially prepared sub-base. The nibs also interlock to enhance surface stability.

Block size 200mm x 100mm x 65mm thick

Colour bracken

From [www.Marshalls.co.uk](http://www.Marshalls.co.uk)

Brindle



## Paving Type C

### Granite Sets

#### Conservation Granite Aggregate Sets

From [www.Marshalls.co.uk](http://www.Marshalls.co.uk)

Size - generally about 120 x 120 mm

Colour (natural) granite

Versatile and elegant sustainable driveways

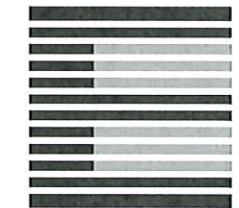
Only use figured dimensions. All dimensions are to be checked prior to use. This drawing remains the copyright of Eurohaus Ltd. and may not be reproduced without their permission. Unauthorised reproduction is a breach of copyright. All discrepancies are to be reported prior to construction.

## NOTES RELATING TO THIS DRAWING

Do not use this drawing to build from without it being noted as issued for 'Construction' in the title panel below.

## REVISIONS

DATE	DESCRIPTION OF REVISION	BY	REV.



EUROHAUS  
ENGLAND & GERMANY

[WWW.EUROHAUS.CO.UK](http://WWW.EUROHAUS.CO.UK)  
[WWW.EUROHAUS-PRODUCTS.DE](http://WWW.EUROHAUS-PRODUCTS.DE)

ARCHITECTURE  
CONSTRUCTION CONSULTANTS  
PROPERTY SERVICES

PROJECT	525A Chessington Road KT19 9JB
CLIENT	B. Morais V. Tehrani
TITLE	Materials Sheet 3
DRAWN BY	TM
SCALE	NTS
DATE	April 2024
ISSUE FOR	Planning
CHECKED	AJM

DRNG. NO.	0379/ 202	Rev.	
-----------	-----------	------	--

THIS DRAWING IS THE COPYRIGHT OF EUROHAUS LTD. ONLY THOSE WITH WHOM WE HAVE CONTRACTED MAY COPY OR USE IT.  
NO LIABILITY IS ACCEPTED FOR UNAUTHORISED USE.