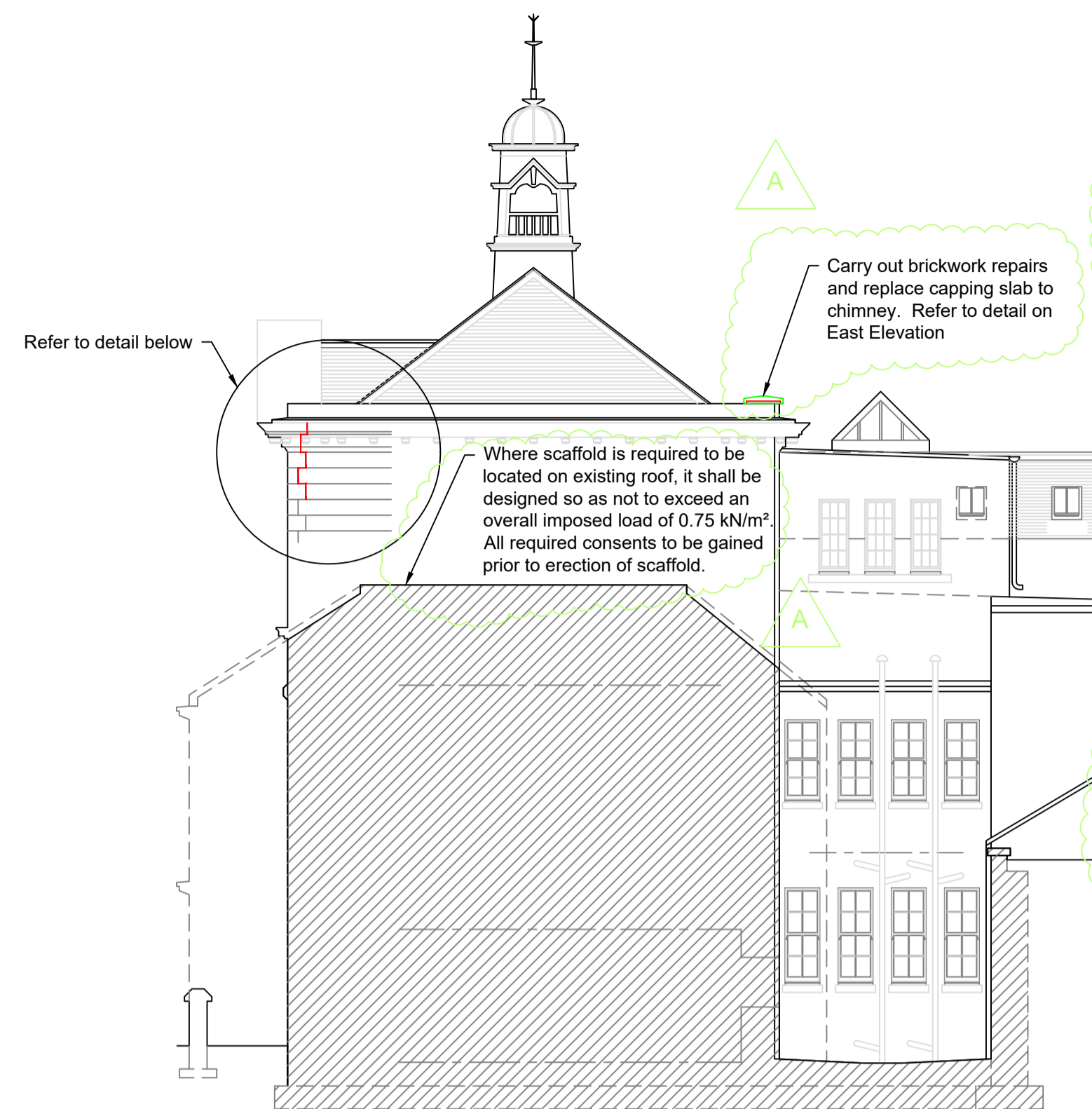


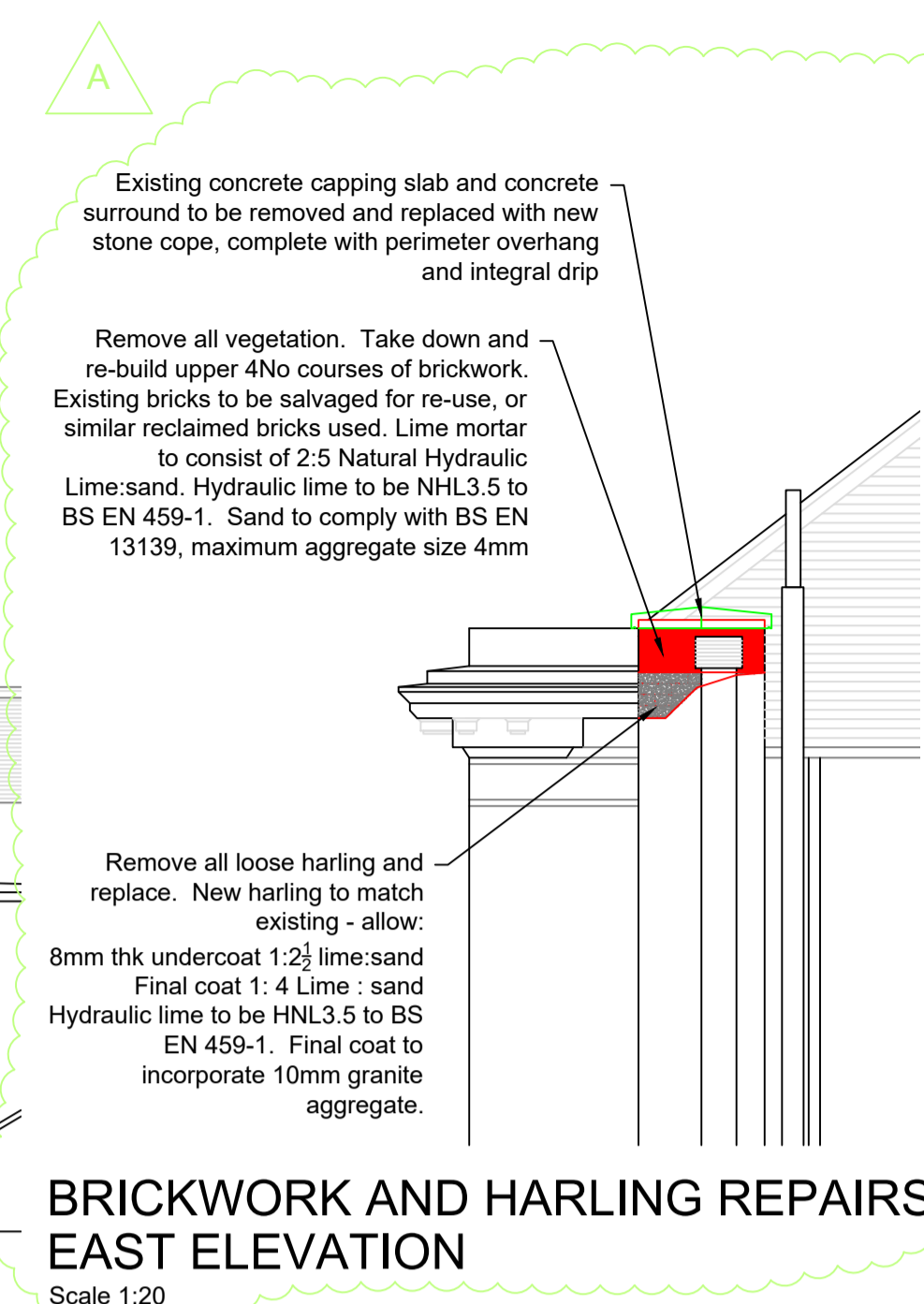
DO NOT SCALE FROM DRAWING, ALL SIZES MUST BE CHECKED ON SITE- CONTRACTOR MUST REPORT ANY DISCREPANCIES TO CONTRACT ADMINISTRATOR



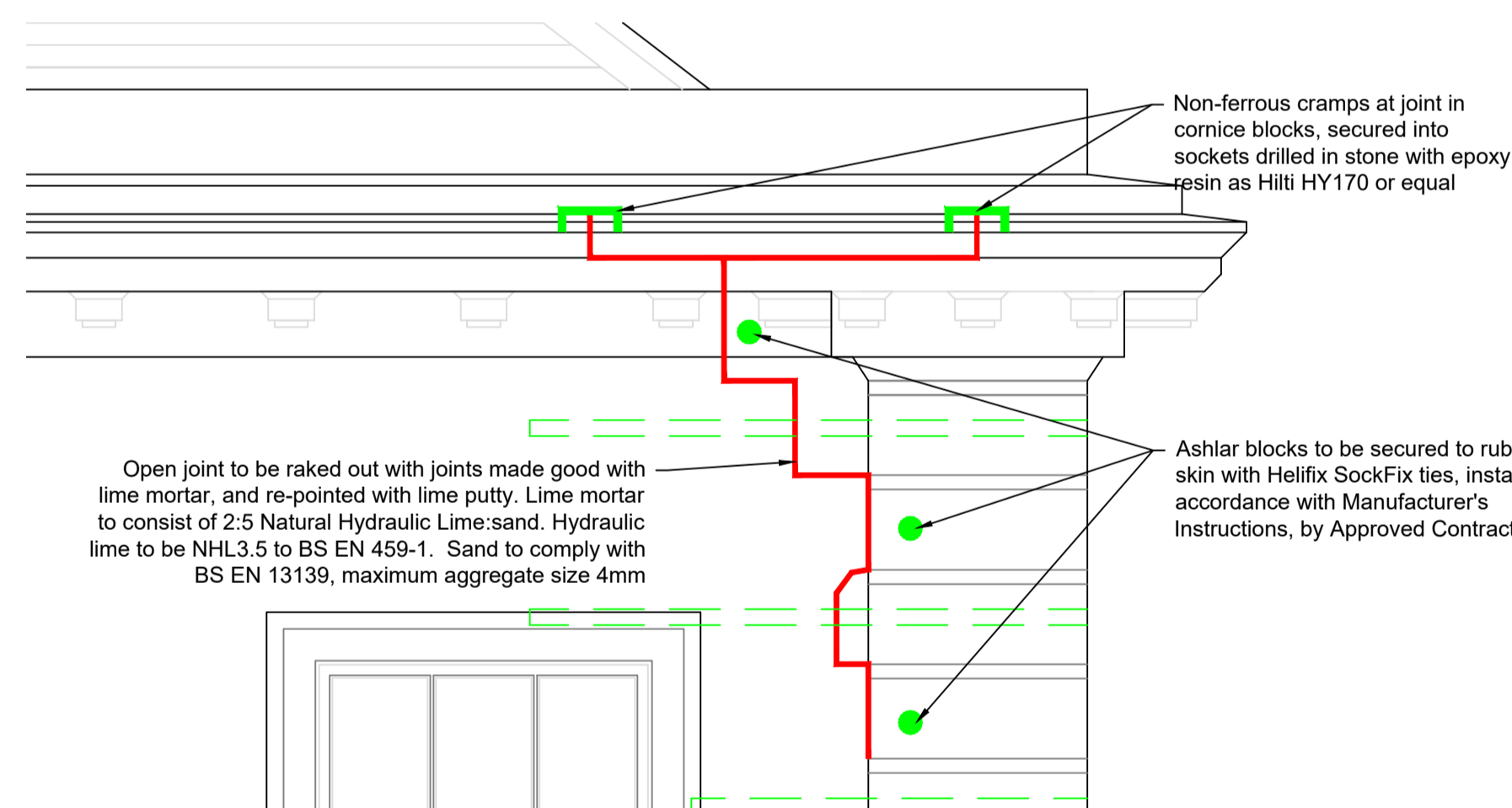
WEST ELEVATION
Scale 1:100



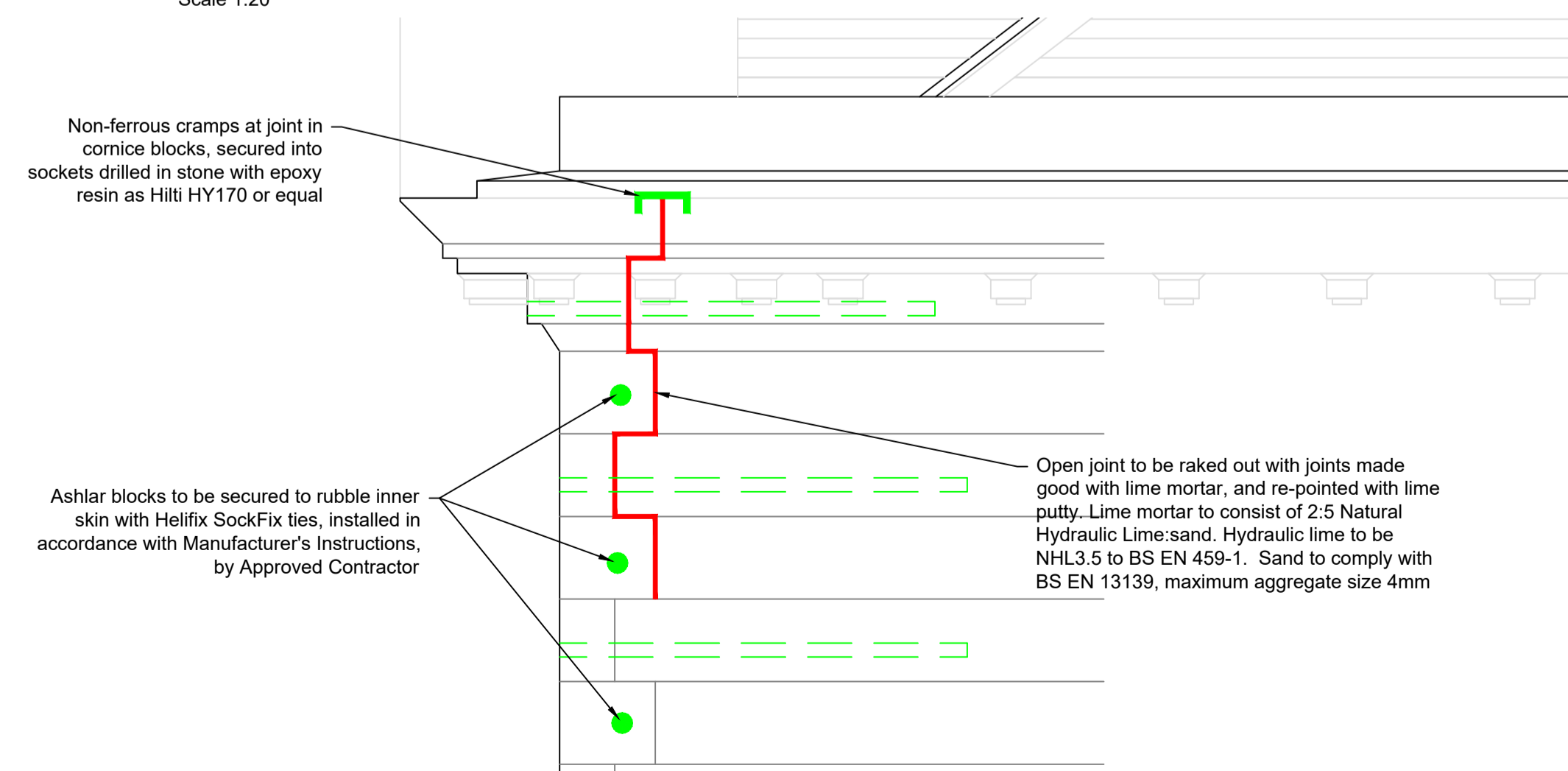
SOUTH ELEVATION
Scale 1:100



BRICKWORK AND HARLING REPAIRS
EAST ELEVATION
Scale 1:20



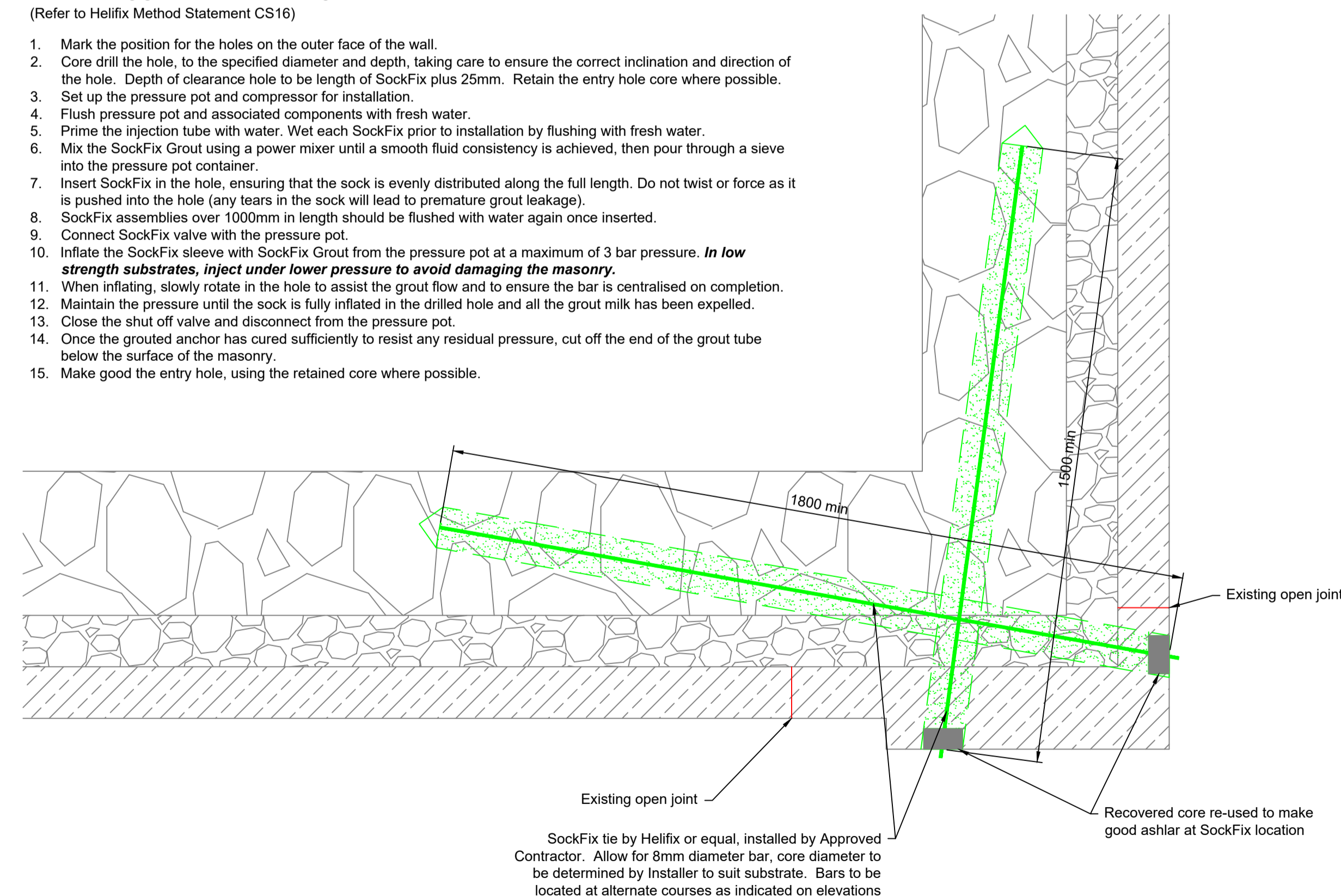
CRACK STITCH ON WEST ELEVATION
Scale 1:20



CRACK STITCH ON SOUTH ELEVATION
Scale 1:20

HELIFIX SOCKFIX INSTALLATION
(Refer to Helifix Method Statement CS16)

1. Mark the position for the holes on the outer face of the wall.
2. Core drill the hole, to the specified diameter and depth, taking care to ensure the correct inclination and direction of the hole. Depth of clearance hole to be length of SockFix plus 25mm. Retain the entry hole core where possible.
3. Set up the pressure pot and compressor for installation.
4. Flush pressure pot and associated components with fresh water.
5. Prime the injection tube with water. Wet each SockFix prior to installation by flushing with fresh water.
6. Mix the SockFix Grout using a power mixer until a smooth fluid consistency is achieved, then pour through a sieve into the pressure pot container.
7. Insert SockFix in the hole, ensuring that the sock is evenly distributed along the full length. Do not twist or force as it is pushed into the hole (any tears in the sock will lead to premature grout leakage).
8. SockFix assemblies over 1000mm in length should be flushed with water again once inserted.
9. Connect SockFix valve with the pressure pot.
10. Inflate the SockFix sleeve with SockFix Grout from the pressure pot at a maximum of 3 bar pressure. **In low strength substrates, inject under lower pressure to avoid damaging the masonry.**
11. When inflating, slowly rotate in the hole to assist the grout flow and to ensure the bar is centralised on completion.
12. Maintain the pressure until the sock is fully inflated in the drilled hole and all the grout milk has been expelled.
13. Close the shut off valve and disconnect from the pressure pot.
14. Once the grouted anchor has cured sufficiently to resist any residual pressure, cut off the end of the grout tube below the surface of the masonry.
15. Make good the entry hole, using the retained core where possible.



CRACK-STITCH DETAIL
Scale 1:10

TENDER DRAWING

Rev. A	Date 3/3/22	By AJT	Chkd.	App.
(Chimney Repair details added, roof-line to neighbouring building amended)				

SOUTH LANARKSHIRE COUNCIL	Housing & Technical Resources Design, Brandongate, 1 Leechlee Road Hamilton, ML3 0XB
	Tel.(01698) 454444 Fax(01698) 453069

Project Title
**LANARK LIBRARY
REMEDIAL WORKS**

Drawing Title
**STONEMWORK REPAIRS
ELEVATIONS AND DETAILS**

SLPN.

Project Code.
COM 011738

Drawing No. XX-DP-S-001	Checked VTC
	Approved VTC

Scale. As Noted	rev. A	Drawn. AJT
	Date.	15/2/22