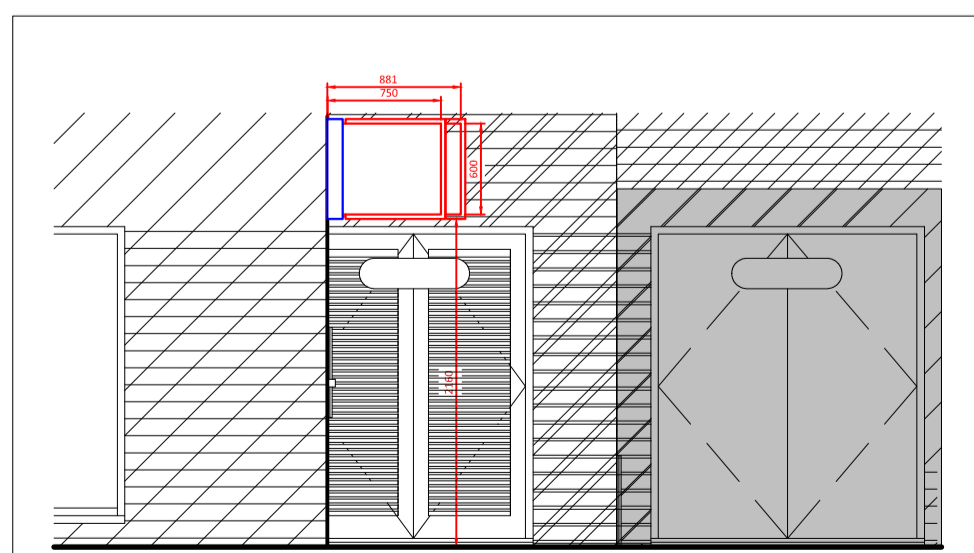
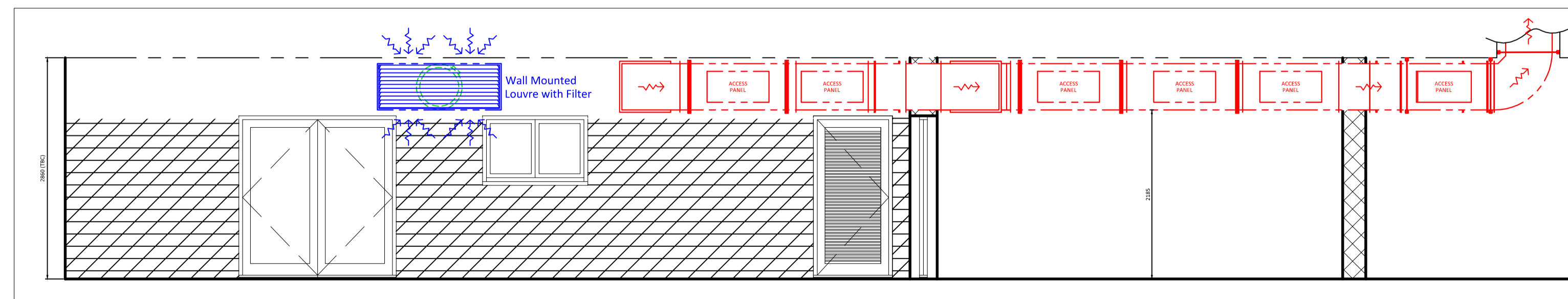


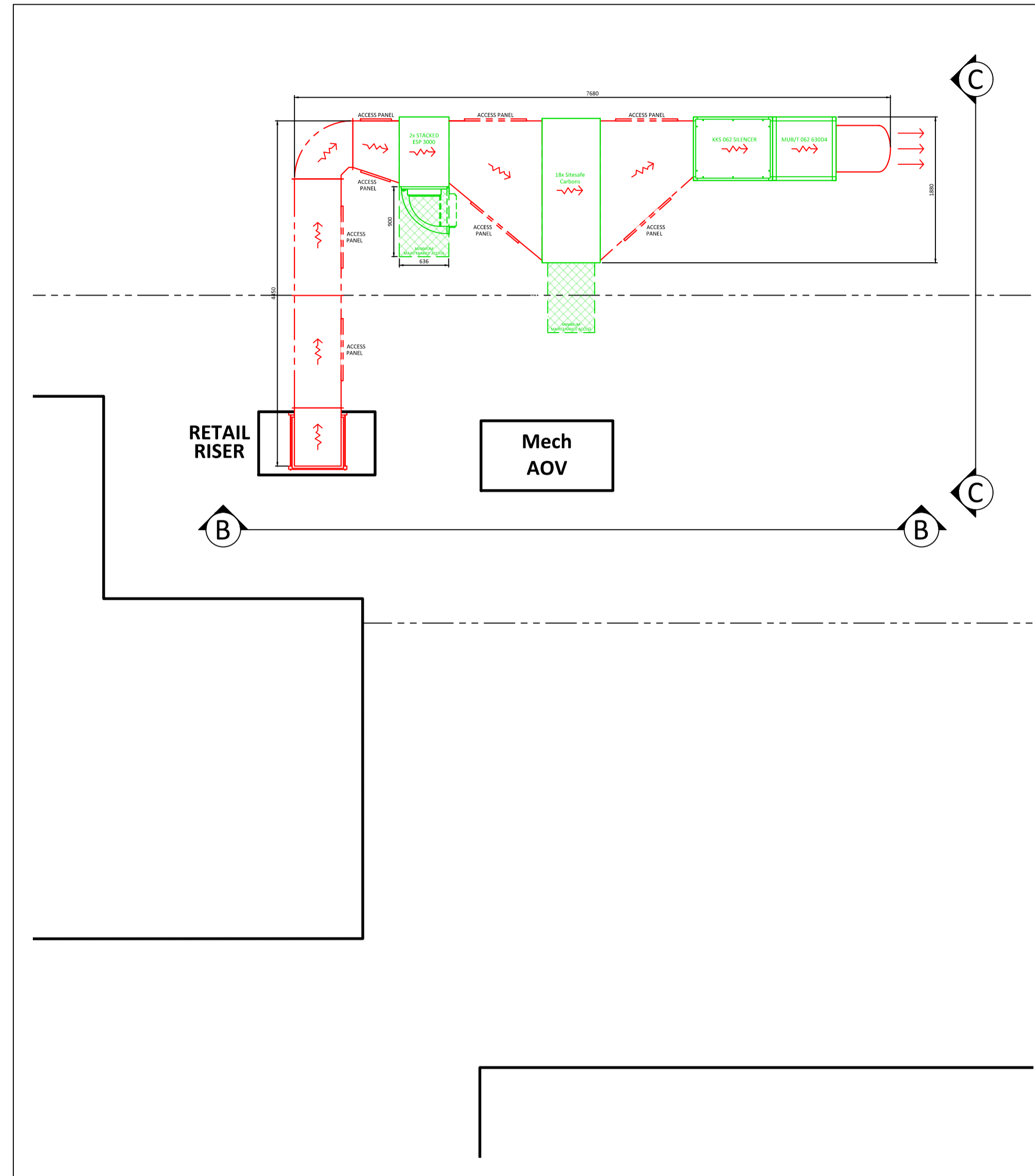
GROUND FLOOR (1:50)



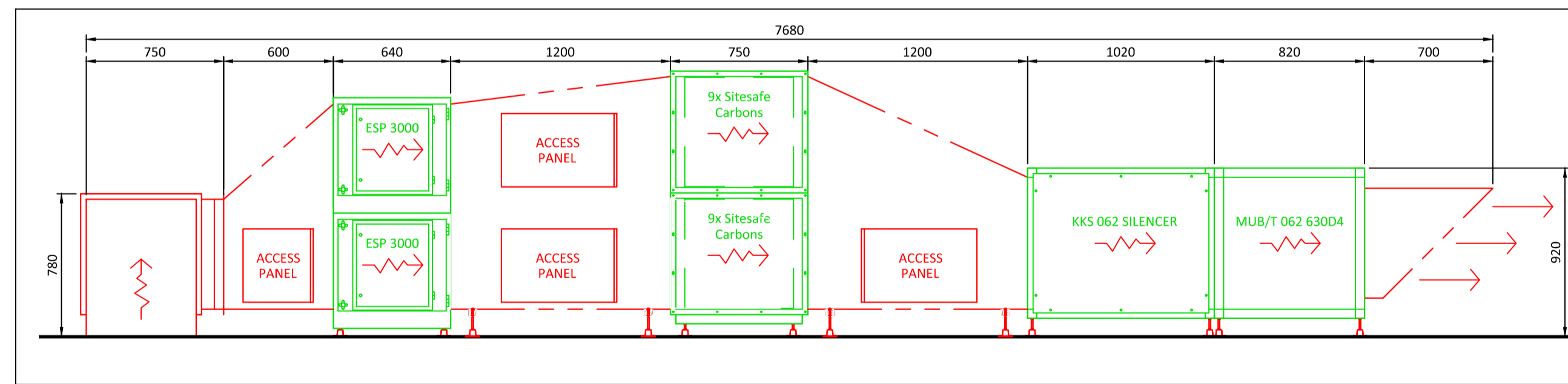
GROUND FLOOR - ELEVATION THROUGH DD (1:50)



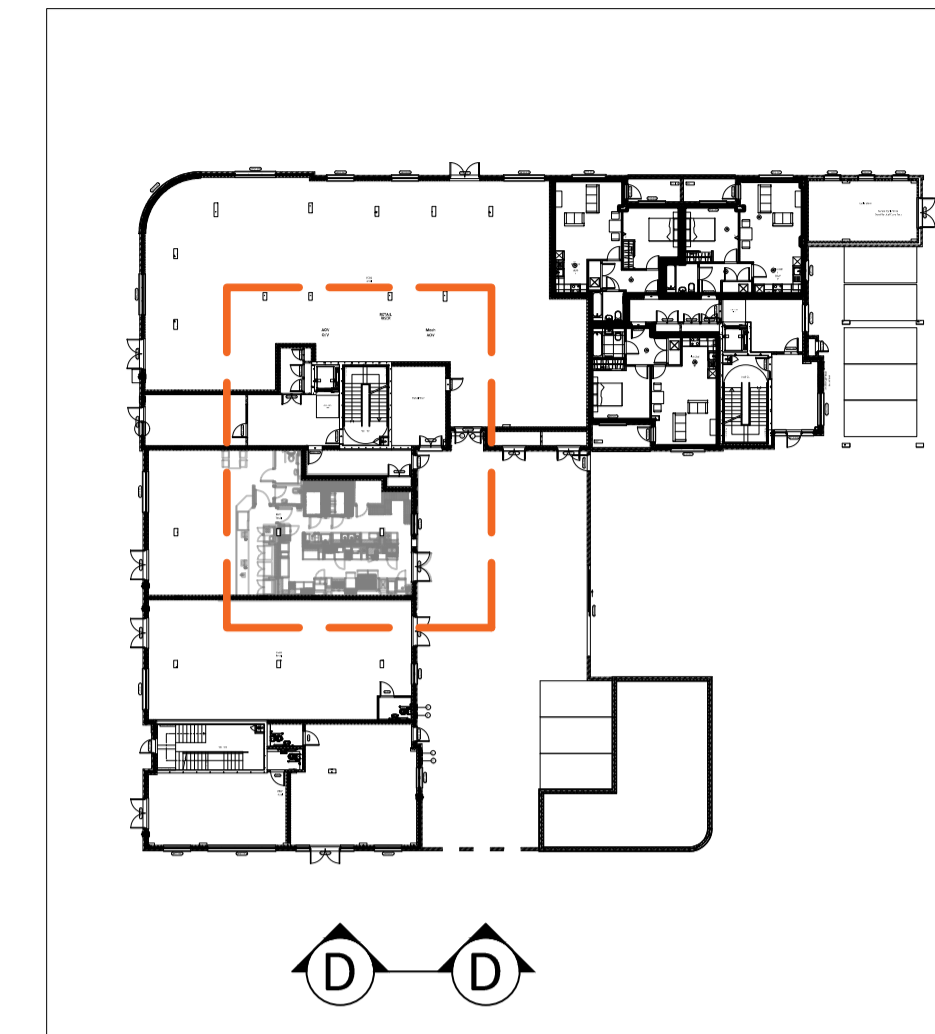
GROUND FLOOR - ELEVATION THROUGH EE (1:50)



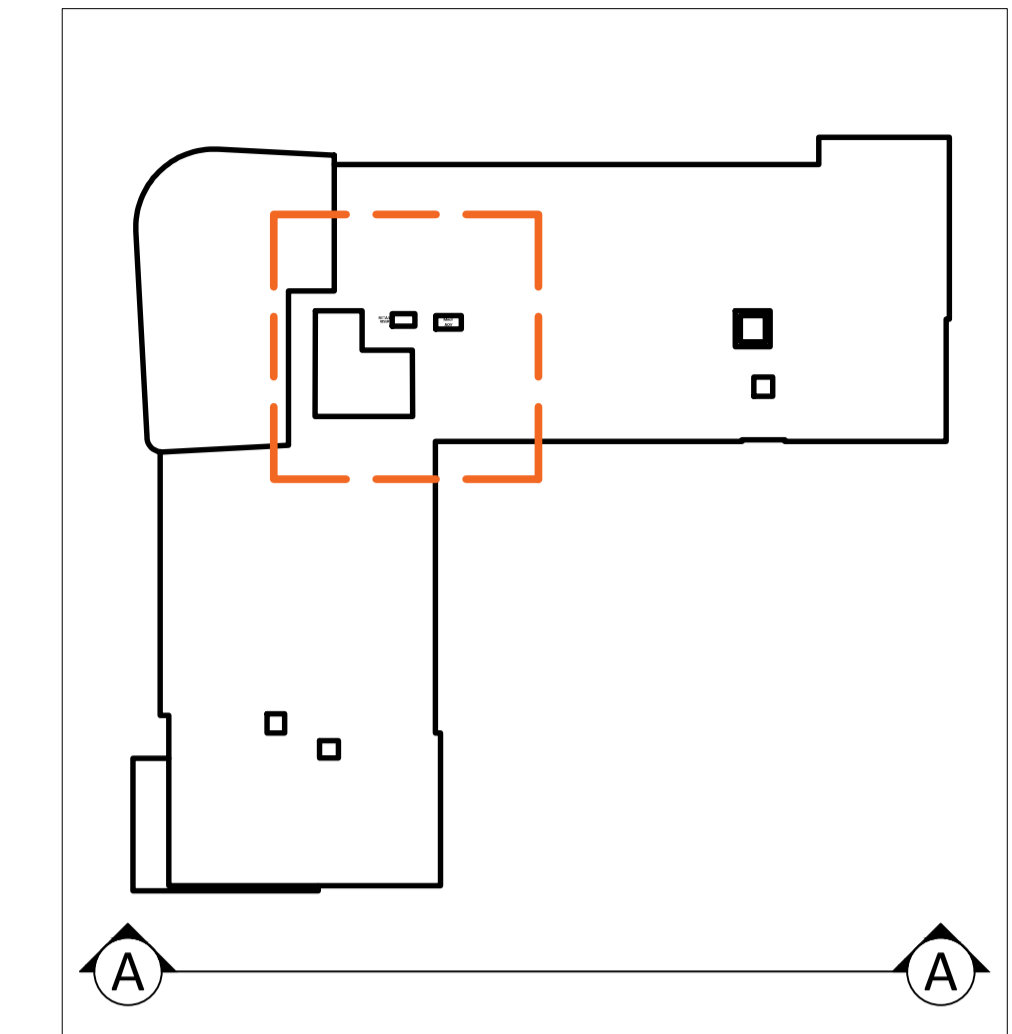
ROOF LEVEL (1:50)



ROOF LEVEL - ELEVATION THROUGH BB (1:25)



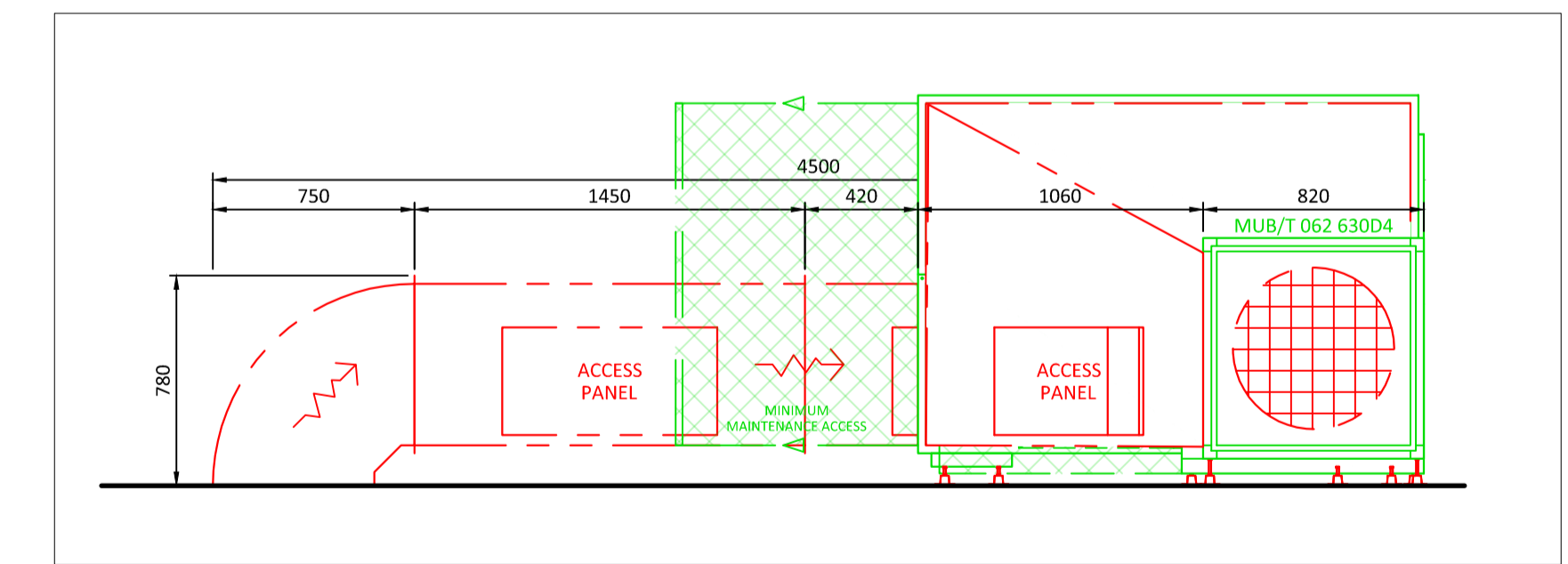
LOCATION MAP - GROUND FLOOR (1:500)



LOCATION MAP - ROOF LEVEL (1:500)



ELEVATION THROUGH AA (1:175)



ROOF LEVEL - ELEVATION THROUGH CC (1:25)

TECHNICAL

Extract Fan - Powerful Acid Effluent Exhaust Fan For Medium Temperatures 150 To 220°C	
Technical Information (Each)	
Manufacturer	System Air
Model	84/87/062/630/04
Stock Number	8235444
Phase	3PH/400V
Input Power	45.52kW
Current	8.08A
Maximum Flow	4.87m³/s
Weight	130.5kg
Enclosure Class	IP55
Insulation Class	IP55
Sound Pressure Level @ 1m (20" Subsonic)	72 dB
Sound Pressure Level @ 3m	58 dB
Free Field	57-78 dB
Model (20-26 Hz)	

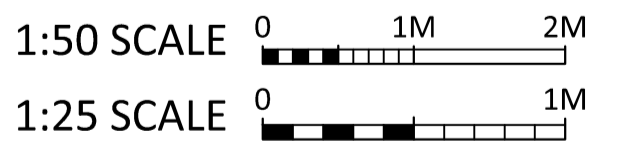
Supply Fan - Low Pressure Axial Duct Fan	
Technical Information (Each)	
Manufacturer	System Air
Model	84/100/14
Stock Number	823787
Phase	3PH
Input Power	6.20kW
Current	1.2A
Maximum Flow	2.68m³/s
Weight	18.8kg
Enclosure Class	IP54
Insulation Class	IP54

ESP - Electrostatic Precipitator For Oil/Water/Smoke Management	
Technical Information (Each)	
Manufacturer	Purified Air
Model	ESP 3000E
Phase	1
Input Power	0.03kW
Current	0.2A
Maximum Flow	1.4m³/s
Weight	87kg

Carbon Filters - Odour Management	
Technical Information	
Manufacturer	Purified Air
Description	Safe Carbon Filters x28
Model	PA242424 x8
Maximum Flow	3m³/s
Resistance	125Pa
Weight of Filter	134kg
Weight inc. Casing	374kg

UV-O - Odour Management	
Technical Information (Each)	
Manufacturer	Purified Air
Model	UV-O 1000
Phase	1
Power	0.6kW
Maximum Flow	2.6m³/s
Weight	15kg

All duct unless specified otherwise to be 600x600mm Firemac Fire Rated Duct with Access Panels mounted on Anti-Vibration Mounts



PROJECT Peckers (RE02) - Bragbury Centre, Stevenage
 TITLE Ground Floor & Roof Level
 LOCATION
 DRAWN CHECKED AF DATE 16/02/24 SCALE Varies A1
 DRAWING No CKP-23-0085 LAYOUT 02 REV C