

Rear 1st floor and infill extension, change of use of rear first floor accommodation, shop front, fascia, and advertising alterations.

7 ALDERMAN'S HILL
PALMERS GREEN
N13 4YG

26th March 2024

CONTENTS:

1. Materials
2. External condensing units

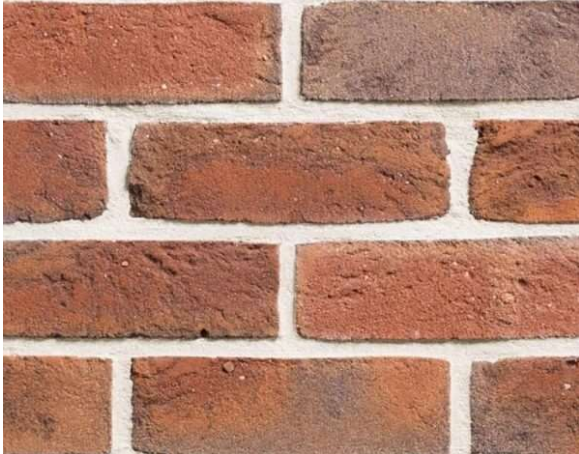


View of the rear of the property with rear extension indicated for scale.

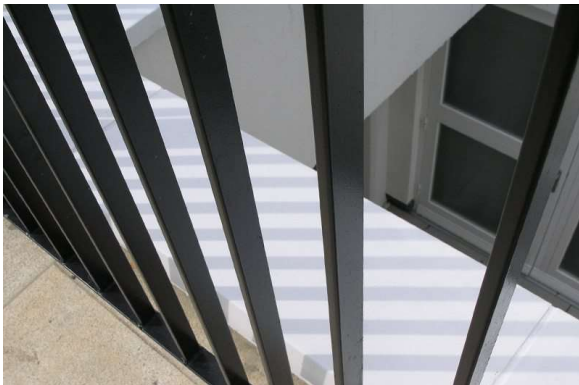
1. Materials



Grey Aluminium capping



Red mix brickwork to match existing.



Black metal railing and screen



Grey Aluminium windows

2. External condensing units



VRV 5 S-series



Lower CO₂ equivalent
and market-leading efficiencies