

DEEP BLUE 3.0

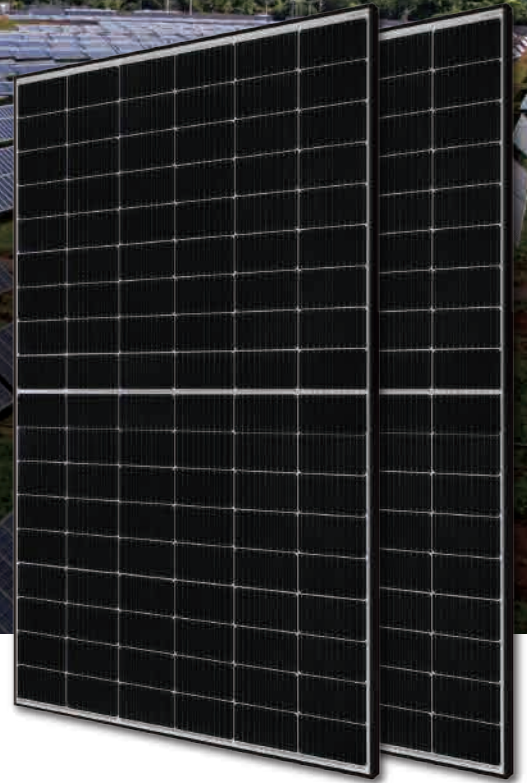
Mono

415W MBB Half-cell Module

JAM54S30 390-415/MR Series

Introduction

Assembled with 11BB PERC cells, the half-cell configuration of the modules offers the advantages of higher power output, better temperature-dependent performance, reduced shading effect on the energy generation, lower risk of hot spot, as well as enhanced tolerance for mechanical loading.



Higher output power



Lower LCOE



Less shading and lower resistive loss

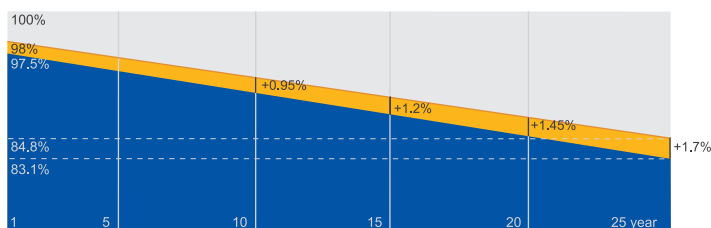


Better mechanical loading tolerance

Superior Warranty

- 12-year product warranty
- 25-year linear power output warranty

0.55% Annual Degradation Over 25 years



■ New linear power warranty ■ Standard module linear power warranty

Comprehensive Certificates

- IEC 61215, IEC 61730, UL 61215, UL 61730
- ISO 9001: 2015 Quality management systems
- ISO 14001: 2015 Environmental management systems
- ISO 45001: 2018 Occupational health and safety management systems
- IEC TS 62941: 2016 Terrestrial photovoltaic (PV) modules – Guidelines for increased confidence in PV module design qualification and type approval



MECHANICAL DIAGRAMS



Remark: customized frame color and cable length available upon request

SPECIFICATIONS

Cell	Mono
Weight	21.5kg±3%
Dimensions	1722±2mm×1134±2mm×30±1mm
Cable Cross Section Size	4mm ² (IEC) , 12 AWG(UL)
No. of cells	108(6x18)
Junction Box	IP68, 3 diodes
Connector	MC4(1000V) MC4-EVO2(1500V)
Cable Length (Including Connector)	Portrait: 300mm(+)/400mm(-); Landscape: 1200mm(+)/1200mm(-)
Packaging Configuration	36pcs/Pallet, 936pcs/40ft Container

ELECTRICAL PARAMETERS AT STC

TYPE	JAM54S30 -390/MR	JAM54S30 -395/MR	JAM54S30 -400/MR	JAM54S30 -405/MR	JAM54S30 -410/MR	JAM54S30 -415/MR
Rated Maximum Power(Pmax) [W]	390	395	400	405	410	415
Open Circuit Voltage(Voc) [V]	36.85	36.98	37.07	37.23	37.32	37.45
Maximum Power Voltage(Vmp) [V]	30.64	30.84	31.01	31.21	31.45	31.61
Short Circuit Current(Isc) [A]	13.61	13.70	13.79	13.87	13.95	14.02
Maximum Power Current(Imp) [A]	12.73	12.81	12.90	12.98	13.04	13.13
Module Efficiency [%]	20.0	20.2	20.5	20.7	21.0	21.3
Power Tolerance	0~+5W					
Temperature Coefficient of Isc(α_{Isc})	+0.045%/°C					
Temperature Coefficient of Voc(β_{Voc})	-0.275%/°C					
Temperature Coefficient of Pmax(γ_{Pmp})	-0.350%/°C					
STC	Irradiance 1000W/m ² , cell temperature 25°C, AM1.5G					

Remark: Electrical data in this catalog do not refer to a single module and they are not part of the offer.They only serve for comparison among different module types.

ELECTRICAL PARAMETERS AT NOCT

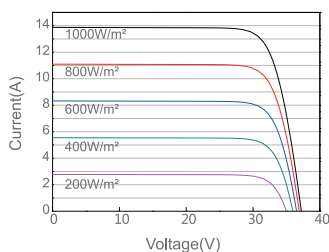
TYPE	JAM54S30 -390/MR	JAM54S30 -395/MR	JAM54S30 -400/MR	JAM54S30 -405/MR	JAM54S30 -410/MR	JAM54S30 -415/MR
Rated Max Power(Pmax) [W]	294	298	302	306	310	314
Open Circuit Voltage(Voc) [V]	34.62	34.75	34.88	35.12	35.23	35.37
Max Power Voltage(Vmp) [V]	28.87	29.08	29.26	29.47	29.72	29.89
Short Circuit Current(Isc) [A]	10.89	10.96	11.03	11.10	11.16	11.22
Max Power Current(Imp) [A]	10.18	10.25	10.32	10.38	10.43	10.50
NOCT	Irradiance 800W/m ² , ambient temperature 20°C, wind speed 1m/s, AM1.5G					

OPERATING CONDITIONS

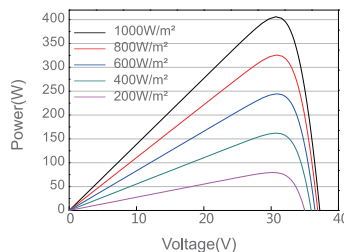
Maximum System Voltage	1000V/1500V DC
Operating Temperature	-40°C~+85°C
Maximum Series Fuse Rating	25A
Maximum Static Load, Front*	5400Pa(112lb/ft ²)
Maximum Static Load, Back*	2400Pa(50lb/ft ²)
NOCT	45±2°C
Safety Class	Class II
Fire Performance	UL Type 1

CHARACTERISTICS

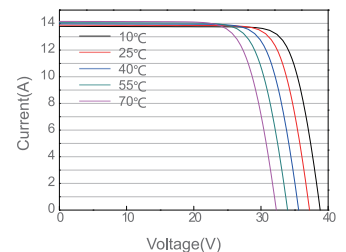
Current-Voltage Curve JAM54S30-405/MR



Power-Voltage Curve JAM54S30-405/MR



Current-Voltage Curve JAM54S30-405/MR



Solis-(25-50)K-5G

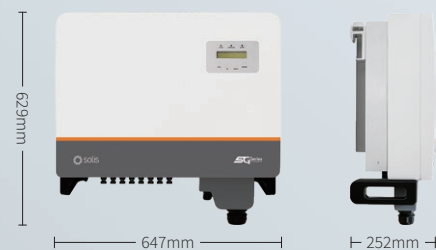
Solis Three Phase Inverters



360 degree

Features:

- ▶ Max. efficiency 98.8%
- ▶ Wide voltage range and low startup voltage
- ▶ 3/4 MPPT design with precise MPPT algorithm
- ▶ THDi<3%, low harmonic distortion against grid
- ▶ Anti-resonance, supporting over 6MW paralleled in one transformer
- ▶ Perfect commercial site monitoring solution
- ▶ 130% DC overload ratio, 13A input for each PV string
- ▶ Strings intelligent monitoring, Smart I-V curve scan
- ▶ Fuse free design to avoid fire hazard
- ▶ Type II surge arrester for both DC and AC
- ▶ Natural convection, Fan-less design, longer lifespan
- ▶ Leakage current repression technology
- ▶ Volt-watt work mode integrated
- ▶ DC input reverse alarm
- ▶ Intergrated Export Power Manager (EPM)



Model:

- | | | |
|--------------|-----------------|-----------------|
| 400V: | Solis-25K-5G | Solis-30K-5G |
| | Solis-33K-5G | Solis-36K-5G |
| | Solis-40K-5G | |
| 480V: | Solis-40K-HV-5G | Solis-50K-HV-5G |

Datasheet

Model Name	Solis-25K-5G	Solis-30K-5G	Solis-33K-5G	Solis-36K-5G	Solis-40K-5G	Solis-40K-HV-5G	Solis-50K-HV-5G
------------	--------------	--------------	--------------	--------------	--------------	-----------------	-----------------

Input DC

Recommended max. PV power	33kW	39kW	43kW	47kW	52kW	52kW	65kW
Max. input voltage	1100V						
Rated voltage	600V						
Start-up voltage	180V						
MPPT voltage range	200-1000V						
Max. input current	26A/26A/26A			4*26A			
Max. short circuit current	40A/40A/40A			4*40A			
MPPT number/Max. input strings number	3/6			4/8			

Output AC

Rated output power	25kW	30kW	33kW	36kW	40kW	40kW	50kW
Max. apparent output power	27.5kVA	33kVA	36.3kVA	39.6kVA	44kVA	44kVA	55kVA
Max. output power	27.5kW	33kW	36.3kW	39.6kW	44kW	44kW	55kW
Rated grid voltage	3/N/PE, 220/380V, 230/400V					3/PE, 480V	
Rated grid frequency	50/60Hz						
Rated grid output current	38.0A/36.1A	45.6A/43.3A	50.1A/47.6A	54.7A/52.0A	60.8A/57.7A	48.1A	60.1A
Max. output current	41.8A	50.2A	55.1A	60.2A	66.9A	53.0A	66.2A
Power Factor	>0.99 (0.8 leading - 0.8 lagging)						
THDi	<3%						

Efficiency

Max. efficiency	98.8%						
EU efficiency	98.3%						

Protection

DC reverse-polarity protection	Yes						
Short circuit protection	Yes						
Output over current protection	Yes						
Surge protection	DC Type II / AC Type II						
Grid monitoring	Yes						
Anti-islanding protection	Yes						
Temperature protection	Yes						
Strings monitoring	Yes						
I/V Curve scanning	Yes						
Anti-PID function	Optional						
Integrated AFCI (DC arc-fault circuit protection)	Yes						
Integrated DC switch	Optional						

General Data

Dimensions (W*H*D)	647*629*252 mm						
Weight	45kg						
Topology	Transformerless						
Self consumption	<1W (night)						
Operating ambient temperature range	-25 ~ +60°C						
Relative humidity	0-100%						
Ingress protection	IP65						
Cooling concept	Natural convection						
Max. operation altitude	4000m						
Grid connection standard	VDE-AR-N 4105, VDE V 0124, VDE V 0126-1-1, UTE C15-712-1, NRS 097-1-2, G98, G99, EN 50549-1/-2, IEC61727, DEWA						
Safety/EMC standard	IEC 62109-1/-2, IEC 62116, EN 61000-6-1/-2/-3/-4						

Features

DC connection	MC4 connector						
AC connection	OT terminal						
Display	LCD						
Communication	RS485, Optional: Wi-Fi, GPRS						