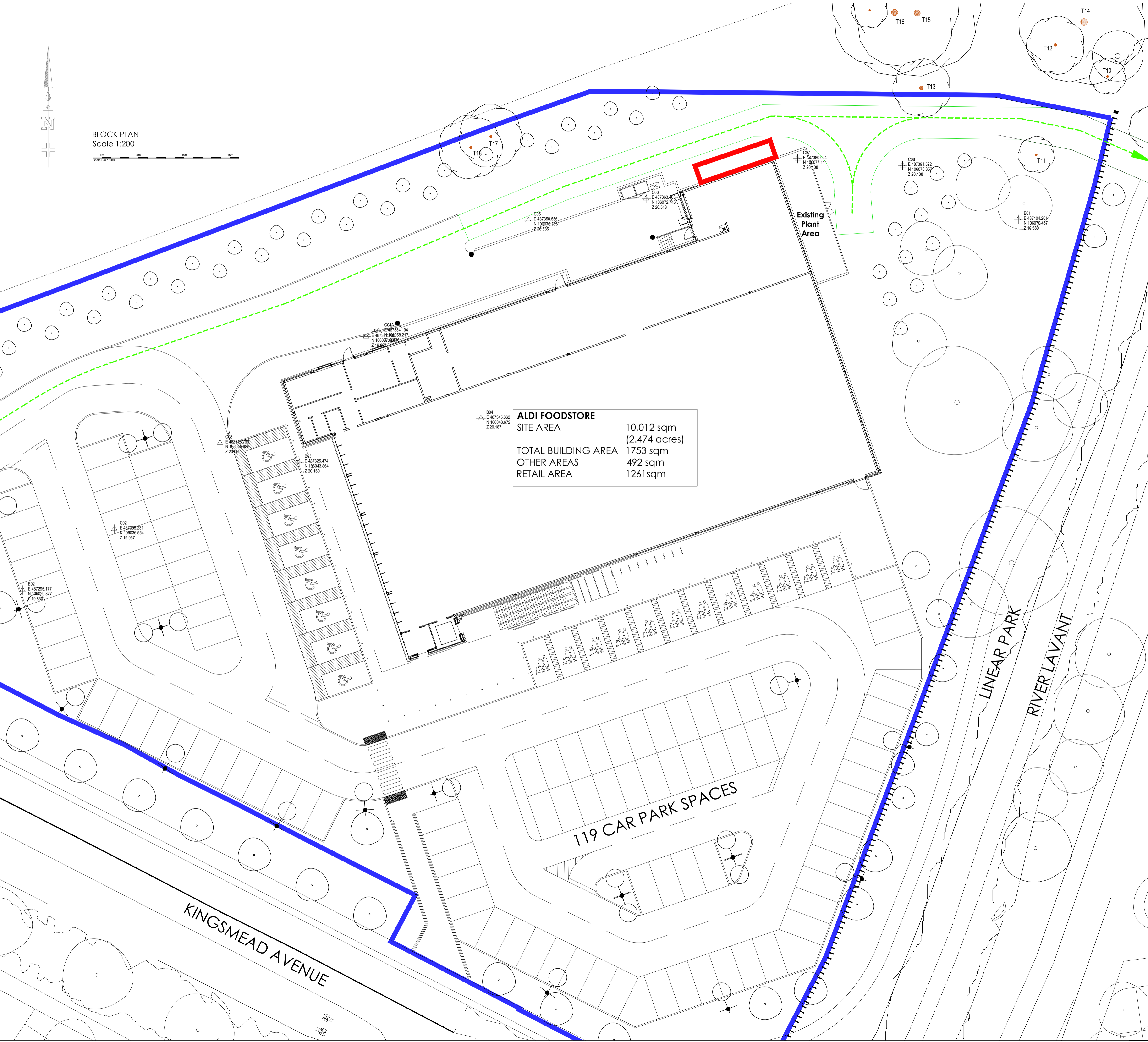
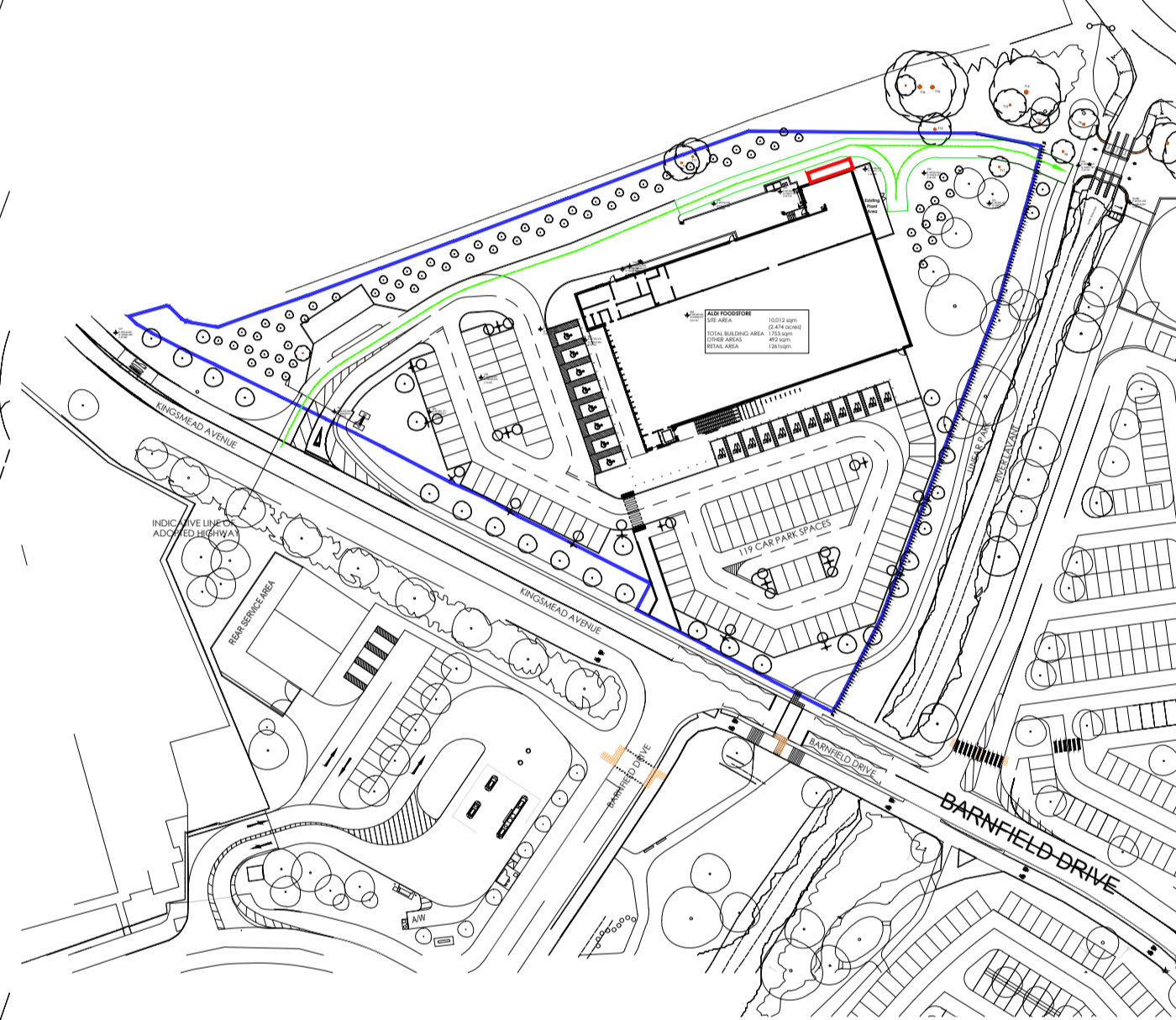




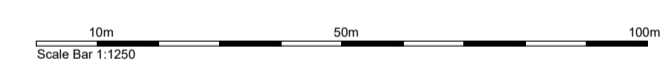
BLOCK PLAN  
Scale 1:200



<b>ALDI FOODSTORE</b>	
<b>SITE AREA</b>	10,012 sqm (2.474 acres)
<b>TOTAL BUILDING AREA</b>	1753 sqm
<b>OTHER AREAS</b>	492 sqm
<b>RETAIL AREA</b>	1261 sqm



LOCATION PLAN  
Scale 1:1250



Rev	Date	Description	Rev By	Chk'd By
D	04.04.2024	Scales changed to 1:1250 & 1:200	KM	RO
C	20.03.2024	Red & Blue line key added	KM	RO
B	15.03.2024	ASHP increased due to Air test results	KM	RO
A	14.03.2024	Updated with Red & Blue line boundaries	KM	RO

WAKEFIELD - T. 01924 291800  
310 JAMES ROAD, WAKEFIELD, WF1 3QA  
MANCHESTER - T. 0161 238555  
CROWN HOUSE, 21 ONE SHED, MANCHESTER, M1 3AG  
MILTON KEYNES - T. 01908 211 577  
THE OLD RECTORY, 79 HIGH STREET, MILTON KEYNES MK14 6AA  
READING - T. 0118 950 7700  
101 LONDON ROAD, READING, RG1 1BT  
LONDON - T. 020 7409 1215  
107 Green Court, 9 Christchurch Place, London, W11 1LL  
www.harrispartnership.com

Client  
**Aldi Stores Limited**



Project Title  
**Unit B  
Barnfield Dr,  
Chichester  
PO19 7AG**

Drawn	Checked	Scale	Rev	Status	Date
KM	RO	1:250	NA	NA	01/24

Project No.	Original	Volume	Level	Type	Role	Number
20027	THP	XX	00	DR	A	005