

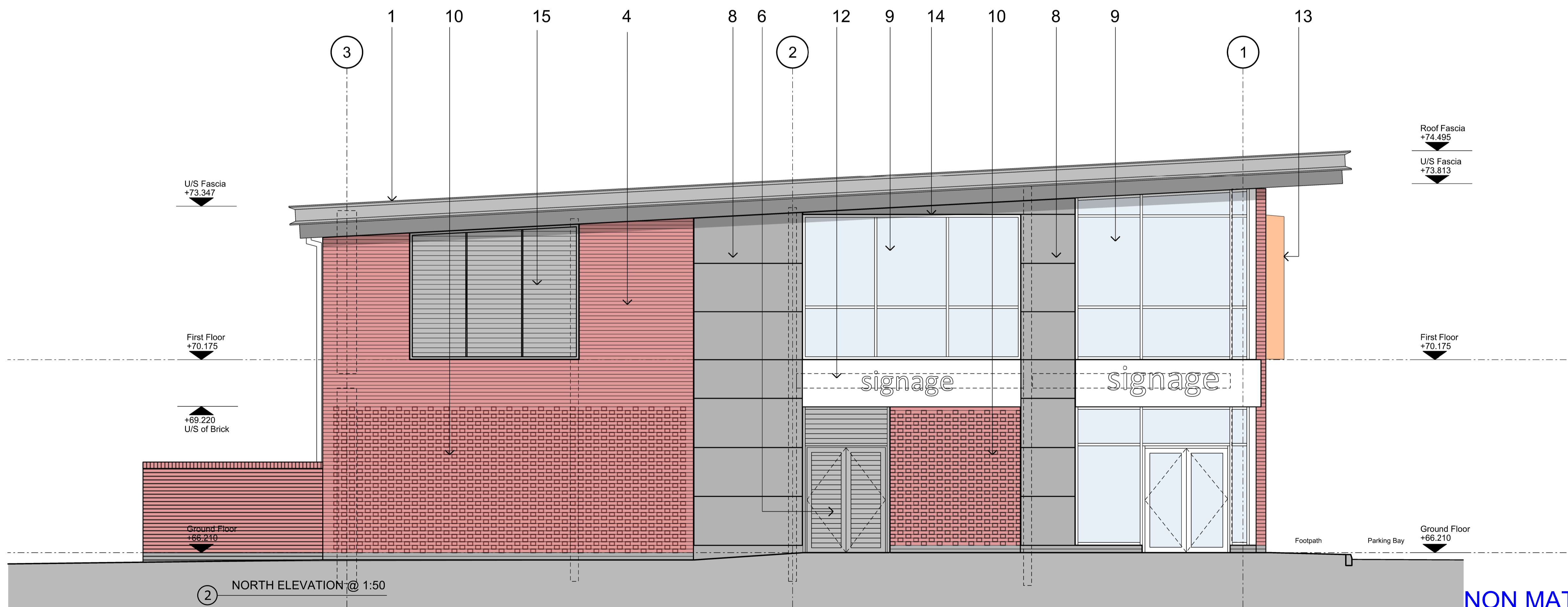
**MATERIAL SCHEDULE**

- 1 - Single ply membrane roof with profiled seam; Roof Colour: Merlin Grey BS18 B 25; Soffit Colour: Merlin Grey BS18 B 25; Metal fascia & verges Colour: ANTHRACITE Grey RAL 7016
- 2 - Metal faced solid external doorset & metal infill panel; ppc finish Colour: ANTHRACITE Grey RAL 7016
- 3 - Metal framed PPC finish double glazed shopfront glazing; Frame colour: ANTHRACITE Grey RAL 7016
- 4 - Facing brick; IBSTOCK BRADGATE REGAL; Colour: Red
- 5 - Metal PPC finish rainwater goods; Colour: Grey RAL 7016
- 6 - Metal louvred external doors; ppc finish Colour: ANTHRACITE Grey RAL 7016
- 7 - Recessed facing brick panel; IBSTOCK BRADGATE REGAL Colour: Red
- 8 - Flat cladding panel, smooth finish; Colour: ALUMINIUM GREY
- 9 - Metal framed PPC finish double glazed window/curtain wall; Frame Colour: ANTHRACITE Grey RAL 7016
- 10 - Feature brickwork panel; IBSTOCK BRADGATE REGAL; Colour: Red
- 11 - Glazed infill panels; enamel backed opaque panel Colour: ANTHRACITE Grey RAL 7016
- 12 - Signage box; Framed flat metal panels (signage approval subject to separate application); colour: TBC
- 13 - PPC metal fin; colour: to match window frame ANTHRACITE Grey RAL 7016
- 14 - Metal frame surround to cill, head & reveals PPC finish; colour: ANTHRACITE Grey RAL 7016
- 15 - Metal louvre panels; PPC finish Colour: ANTHRACITE GREY RAL 7016
- 16 - External metal faced solid doorset; Frame colour: ANTHRACITE Grey RAL 7016

**LEGEND**

- OP Opaque Glass
- MP Metal Panel
- Projecting Aluminium Fins
- Louvre

REF.	PROPOSED CHANGE FROM APPROVED	REASON
<b>D FOODSTORE</b> <small>APPROVED UNDER REF. NW/22/00170/REM            DRAWING NO. 1033-007-P8</small>		
	<small>DRAWING NO. 1495-408-P2            PROPOSED EAST &amp; NORTH ELEVATIONS</small>	
D4	EAST ELEVATION: EXTERNAL METAL FACED DOOR ADDED	TENANT REQUIREMENT



**NON MATERIAL AMENDMENT APPLICATION**

APPROVED APPLICATION REF. NW/22/00170/REM  
 1033-007-P8 - PROPOSED ELEVATIONS - FOODSTORE

**NOTES**  
 All dimensions are to be checked before implementation. Any discrepancies are to be advised immediately. All information is copyright of DLA Architects Practice and may not be used or reproduced without prior permission.

**REVISIONS**  
 P2 19-02-2024 PLANNING ISSUE  
 DO NOT SCALE NOTE REMOVED



**NORTH WELLINGBOROUGH LOCAL CENTRE**  
 PGR CONSTRUCTION  
 PROPOSED EAST+NORTH ELEVATIONS-FOODSTORE

DATE: NOV 2023  
 DRAWING NUMBER: 1495-408

SCALE: 1:50@A1  
 REVISION: P2

STATUS: PLANNING

**DLA ARCHITECTS PRACTICE**  
 INTEGRATED ARCHITECTURE

50 North Thirteenth Street  
 CENTRAL MILTON KEYNES, MK9 3BP  
 T: 01908 259719 F: 01908 605747  
 email: mail@dla-architects.com

© DLA ARCHITECTS PRACTICE LTD