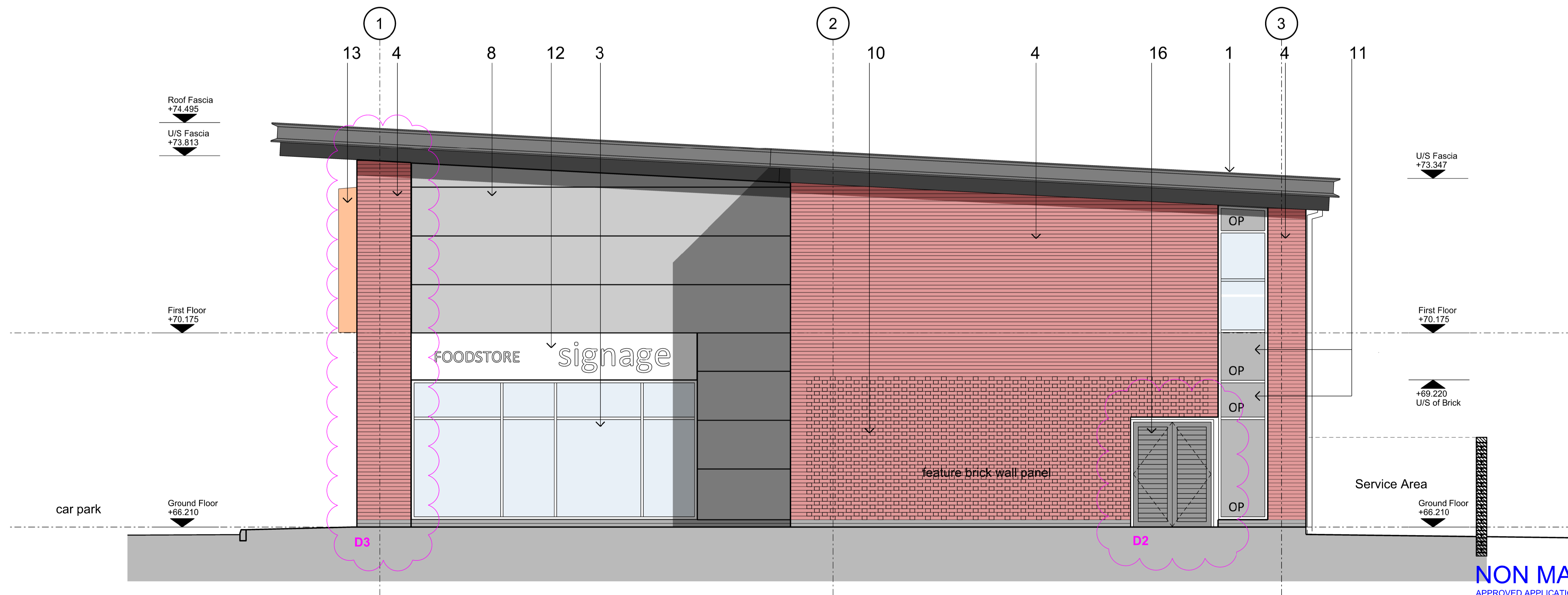




1 WEST ELEVATION @ 1:50



2 SOUTH ELEVATION @ 1:50

**MATERIAL SCHEDULE**

- 1 - Single ply membrane roof with profiled seam; Roof Colour: Merlin Grey BS18 B 25; Soffit Colour: Merlin Grey BS18 B 25 Metal fascia & verges Colour: ANTHRACITE Grey RAL 7016
- 2 - Metal faced solid external doorset & metal infill panel; ppc finish Colour: ANTHRACITE Grey RAL 7016
- 3 - Metal framed PPC finish double glazed shopfront glazing; Frame colour: ANTHRACITE Grey RAL 7016
- 4 - Facing brick; IBSTOCK BRADGATE REGAL; Colour: Red
- 5 - Metal PPC finish rainwater goods; Colour: Grey RAL 7016
- 6 - Metal louvred external doors; ppc finish Colour: ANTHRACITE Grey RAL 7016
- 7 - Recessed facing brick panel; IBSTOCK BRADGATE REGAL Colour: Red
- 8 - Flat cladding panel, smooth finish; Colour: ALUMINIUM GREY
- 9 - Metal framed PPC finish double glazed window/curtain wall; Frame Colour: ANTHRACITE Grey RAL 7016
- 10 - Feature brickwork panel; IBSTOCK BRADGATE REGAL; Colour: Red
- 11 - Glazed infill panels; enamel backed opaque panel Colour: ANTHRACITE Grey RAL 7016
- 12 - Signage box; Framed flat metal panels (signage approval subject to separate application); colour: TBC
- 13 - PPC metal fin; colour: to match window frame ANTHRACITE Grey RAL 7016
- 14 - Metal frame surround to cill, head & reveals PPC finish; colour: ANTHRACITE Grey RAL 7016
- 15 - Metal louvre panels, PPC finish Colour: ANTHRACITE Grey RAL 7016
- 16 - External metal louvred door; Frame colour: ANTHRACITE Grey RAL 7016

**LEGEND**

- OP Opaque Glass
- MP Metal Panel
- Projecting Aluminium Fins
- Louvre

D FOODSTORE		
APPROVED UNDER REF. NW/22/00170/REM DRAWING NO. 1033-007-P8		
REF.	PROPOSED CHANGE FROM APPROVED	REASON
D1	WEST ELEVATION: BRICK PANELS ON 1ST FLOOR CHANGED TO FLAT HORIZONTAL CLADDING PANELS.	CHANGES TO EXTERNAL MATERIALS: DECISION TO CONSTRUCT THE COLUMNS ON THE FRONTAGE (WEST ELEVATION) IN BRICKWORK RATHER THAN CLADDING, MAKING THEM FAR MORE ROBUST AND ABLE TO WITHSTAND BUMPS AND SCRATCHES FROM TROLLEYS. OVERALL MATERIAL PALETTE REMAINS THE SAME - MATERIALS HAVE BEEN RE-POSITIONED TO ADDRESS BUILDABILITY AND LONGEVITY. VISUALLY THE CHANGES ARE MINIMAL.
D1(a)	BRICK COLUMNS IN LIEU OF METAL CLADDING.	
D2	SOUTH ELEVATION: EXTERNAL METAL LOUVRED DOUBLE LEAF DOOR ADDED.	ACCESS TO PLANT ROOM/STORE. STORE PROVISION UNDERNEATH THE STAIRS FOR UNIT 7.
D3	BRICK PIER IN LIEU OF METAL CLADDING AT CORNER.	BUILDABILITY & CONSTRUCTION.

**NON MATERIAL AMENDMENT APPLICATION**

APPROVED APPLICATION REF. NW/22/00170/REM 1033-007-P8 - PROPOSED ELEVATIONS - FOODSTORE

**NOTES**  
All dimensions are to be checked before implementation. Any discrepancies are to be advised immediately. All information is copyright of DLA Architects Practice and may not be used or reproduced without prior permission.

**REVISIONS**  
P4 06-03-2024 PLANNING ISSUE  
DO NOT SCALE NOTE REMOVED



NORTH WELLINGBOROUGH LOCAL CENTRE  
PGR CONSTRUCTION  
PROPOSED SOUTH+WEST ELEVATIONS-FOODSTORE  
DATE NOV 2023  
DRAWING NUMBER 1495-407

SCALE 1:50@A1  
REVISION P4

STATUS PLANNING

**DLA ARCHITECTS PRACTICE**  
INTEGRATED ARCHITECTURE  
50 North Thirteenth Street  
CENTRAL MILTON KEYNES, MK9 3BP  
T: 01908 259719 F: 01908 605747  
email: mail@dla-architects.com

© DLA ARCHITECTS PRACTICE LTD