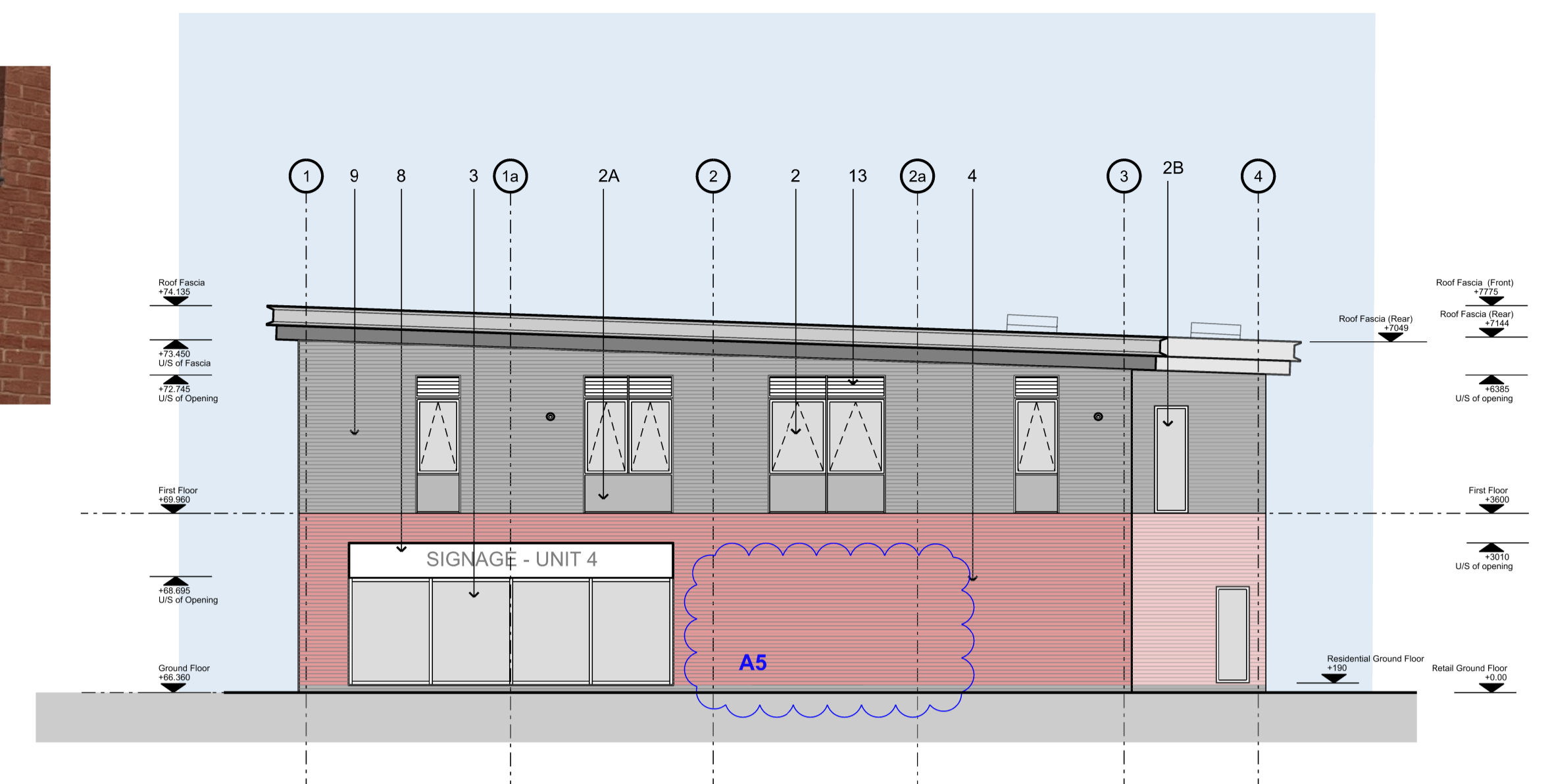


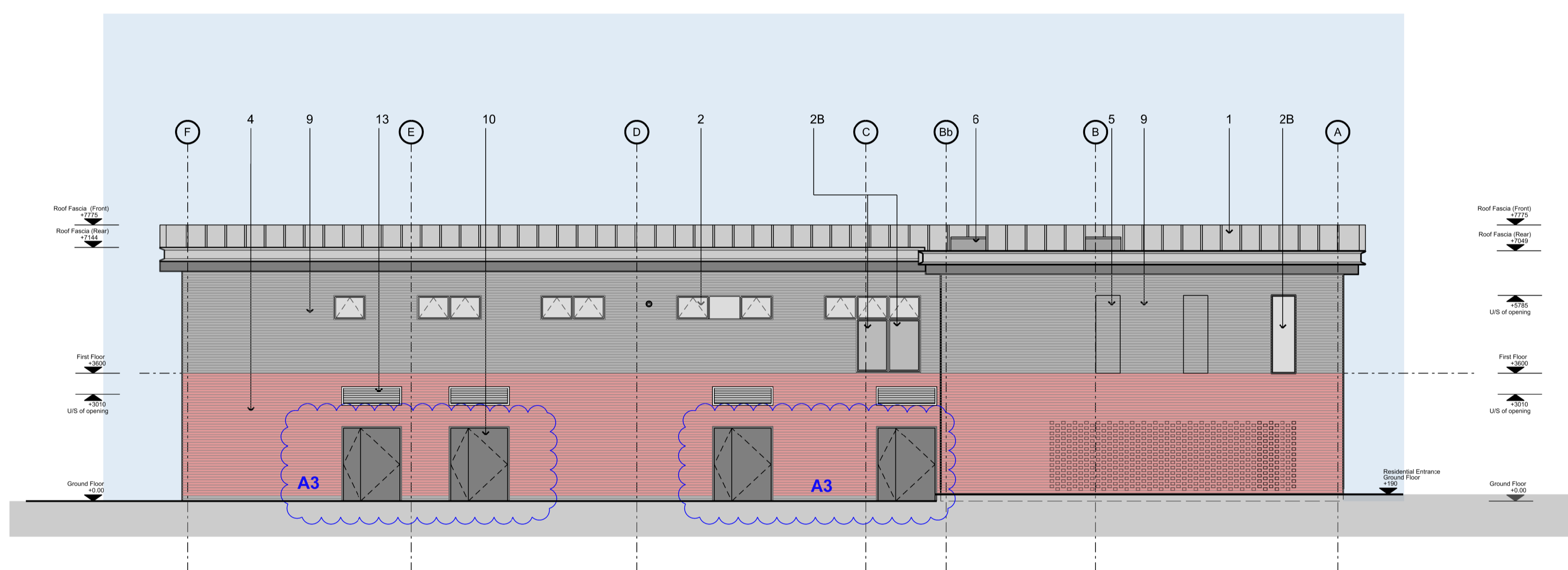
1 SOUTH ELEVATION



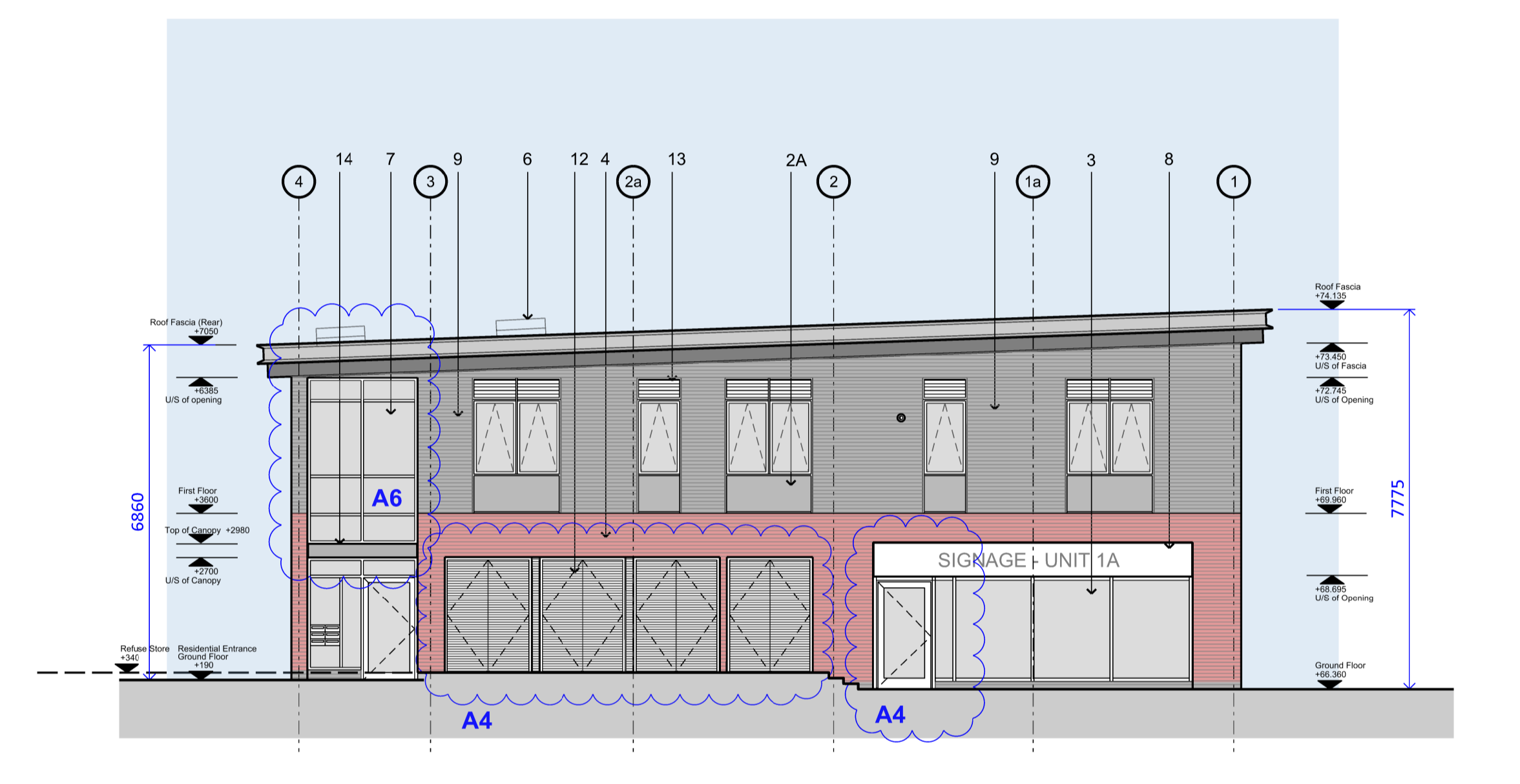
Brick stretcher bond typical detail to match adjacent development



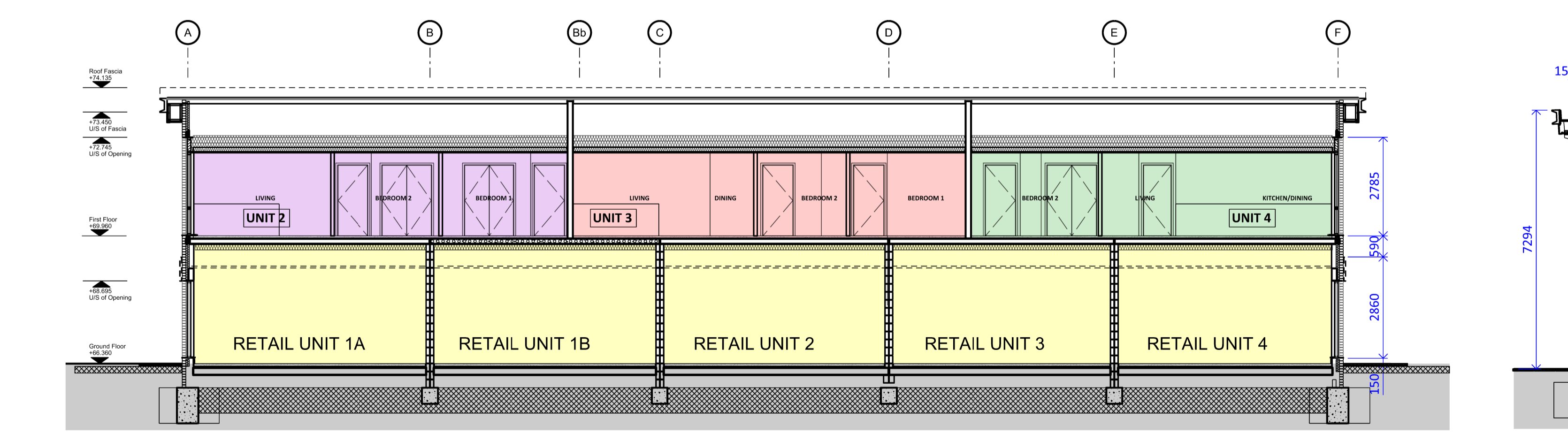
3 EAST ELEVATION



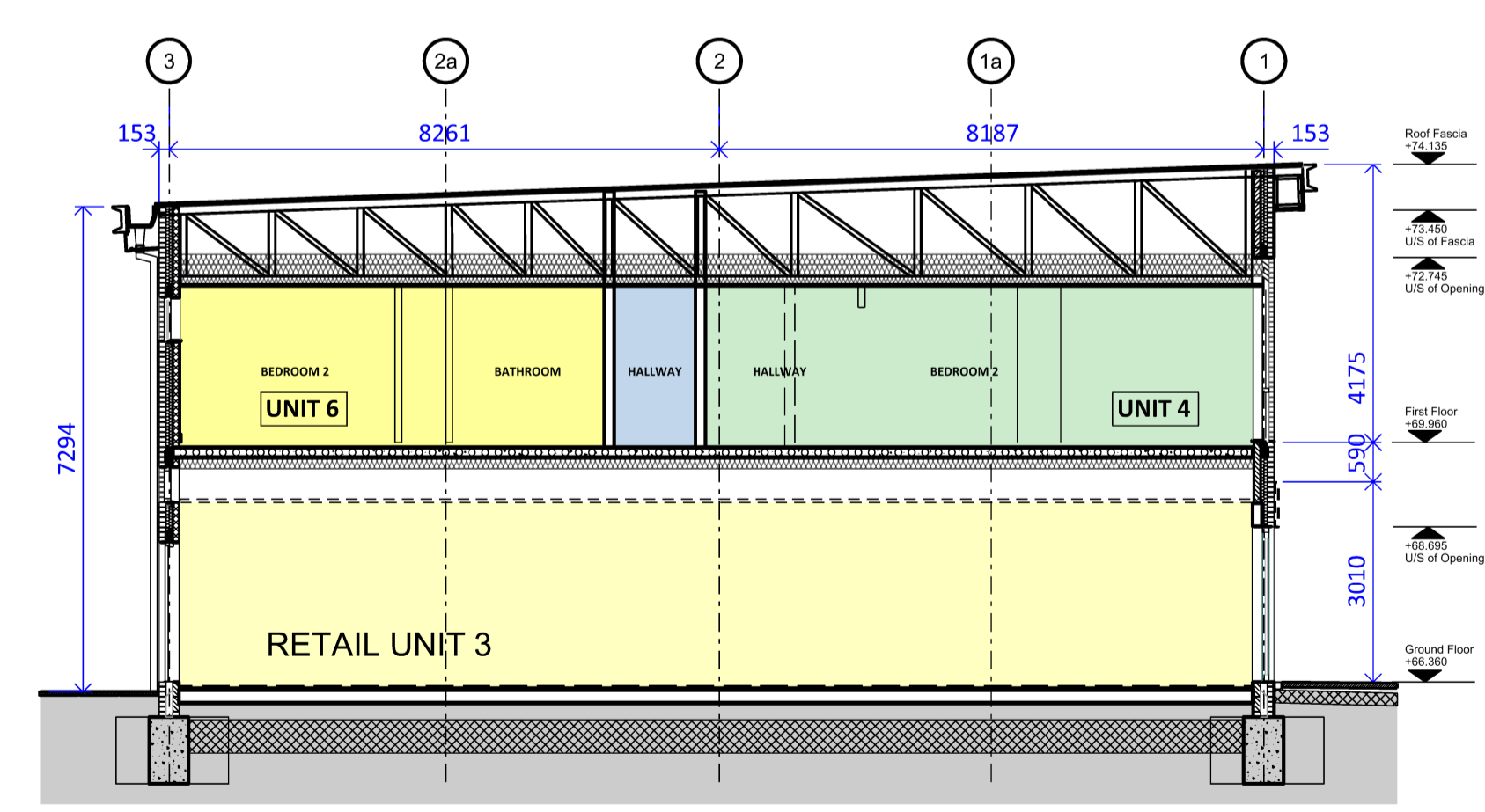
2 NORTH ELEVATION



4 WEST ELEVATION

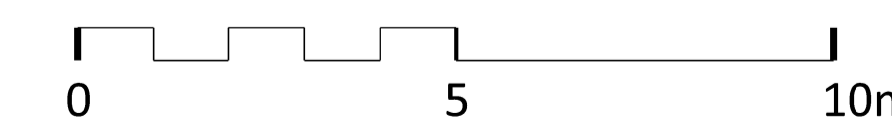


5 LONG SECTION



6 CROSS SECTION

A RETAIL UNITS & RESIDENTIAL APARTMENTS		
APPROVED UNDER REF. NW/22/00170/REM DRAWING NO. 1033-005-P8		
REF	CHANGE FROM APPROVED DRAWING NO. 1495-403-P5 PROPOSED ELEVATIONS	REASON
A1	ALL ELEVATIONS: STACK BONDED BRICK PANELS REMOVED STRETCHER BOND FACING BRICK PANELS IN LIEU OF STACK BOND BRICK PATTERN	BUILDABILITY RATIONALISATION OF BRICK PANELS & DETAILING. MINIMAL VISUAL IMPACT ON ELEVATIONS AT FIRST FLOOR LEVEL.
A2	UNIT 2: ENTRANCE DOOR RE-LOCATED CENTRAL TO SHOPFRONT	TENANT REQUIREMENT
A3	NORTH ELEVATION: REAR EXIT DOORS TO UNITS CHANGE FROM SINGLE DOOR TO DOUBLE LEAF DOOR	BUILDING CONTROL REQUIREMENT
A4	WEST ELEVATION: UNIT 1A EXIT DOOR IN SHOPFRONT & BIN STORE DOORS IN LIEU OF ONE SHOPFRONT.	FIRE EXIT FROM UNIT - BUILDING CONTROL REQUIREMENT. BIN LAYOUT & BIN DOORS REQUIRED DUE TO EXTERNAL LEVELS DIFFERENCE.
A5	EAST ELEVATION: ONE SHOPFRONT REMOVED	TENANT SECURITY & OUTLOOK DUE TO PROXIMITY OF ADJACENT RESIDENTIAL DWELLINGS
A6	WEST ELEVATION: INCREASED TO TWO-STOREY OVER RESIDENTIAL ENTRANCE. PREVIOUSLY SINGLE STOREY WITH FLAT ROOF & 1ST FLOOR SET BACK.	IMPROVED INTERNAL USER ACCESS FOR SERVICES & BIKES



NON MATERIAL AMENDMENT APPLICATION

APPROVED APPLICATION REF. NW/22/00170/REM
1033-005-P8 - PROPOSED ELEVATIONS - RETAIL + RESIDENTIAL

NOTES
All dimensions are to be checked before implementation. Any discrepancies are to be advised immediately. All information is copyright of DLA Architects Practice and may not be used or reproduced without prior permission.

REVISIONS
P4 19-02-2024
P5 06-03-2024

ISSUED FOR REVIEW
PLANNING ISSUE
DO NOT SCALE NOTE REMOVED & SCALE BAR ADDED

MATERIAL SCHEDULE

1 - Single ply membrane roof with standing seam detail; Roof Colour: Merlin Grey BS18 B 25; Soffit Colour: Merlin Grey BS18 B 25; Metal fascia & verges Colour: ANTHRACITE Grey RAL 7016

2 - Aluminium framed double glazed windows; Frame colour: ANTHRACITE Grey RAL 7016

2A - Opaque glazed panel

2B - Translucent glazed panel

3 - Aluminium framed PPC finish double glazed shopfront glazing; Frame Colour: ANTHRACITE Grey RAL 7016

4 - Facing brick; IBSTOCK BRADGATE REGAL Colour: RED

5 - Recessed brick panel; IBSTOCK BRADGATE REGAL Colour: RED

6 - Roof pointing ACV

7 - Aluminium framed PPC finish glazed curtain wall; Frame Colour: ANTHRACITE Grey RAL 7016

8 - Signage Box; Composite flat metal infill panels Colour: WHITE

9 - Facing brick; Colour: BLUE/BLACK

10 - External metal faced solid doorset; Frame colour: ANTHRACITE Grey RAL 7016

11 - Decorative brick parapet; IBSTOCK BRADGATE REGAL Colour: RED

12 - External metal louvred door; Frame colour: ANTHRACITE Grey RAL 7016

13 - Metal faced top panel; PPC finish; Frame colour: ANTHRACITE Grey RAL 7016

14 - Metal faced external canopy; PPC finish; ANTHRACITE Grey RAL 7016

NORTH WELLINGBOROUGH LOCAL CENTRE
PGR CONSTRUCTION
PROPOSED ELEVATIONS - RETAIL + RESIDENTIAL

DATE: NOV 2023
DRAWING NUMBER: 1495-403

SCALE: 1:100@A1
REVISION: P5

STATUS: PLANNING

DLA ARCHITECTS PRACTICE
INTEGRATED ARCHITECTURE

50 North Thirteenth Street
CENTRAL MILTON KEYNES, MK9 3BP
T: 01908 259719 F: 01908 605747
email: mail@dla-architects.com

© DLA ARCHITECTS PRACTICE LTD