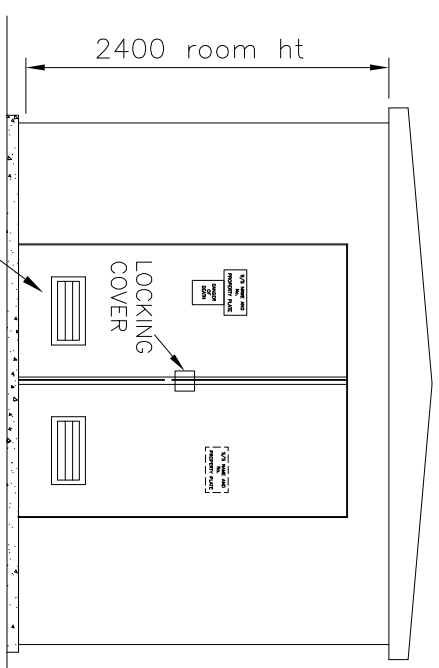
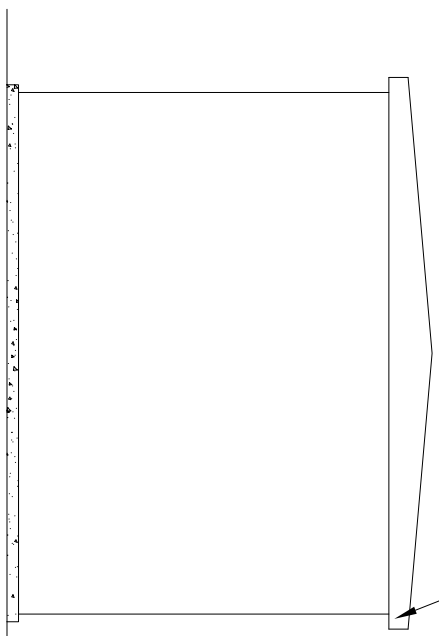


ROOF TO HAVE EXPLOSION RELIEF FITTINGS

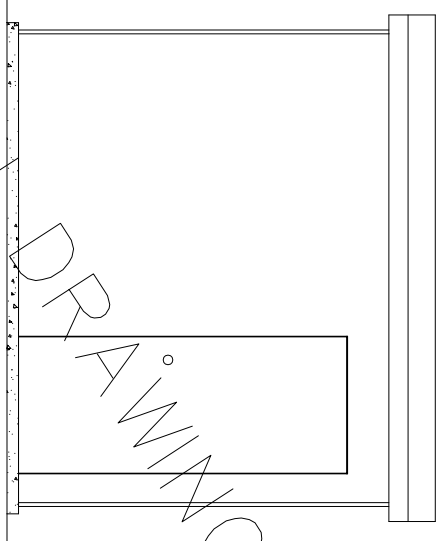
EAVES VENTILATION TO BE PROVIDED TO 3 SIDES (REAR & SIDES)



FRONT ELEVATION



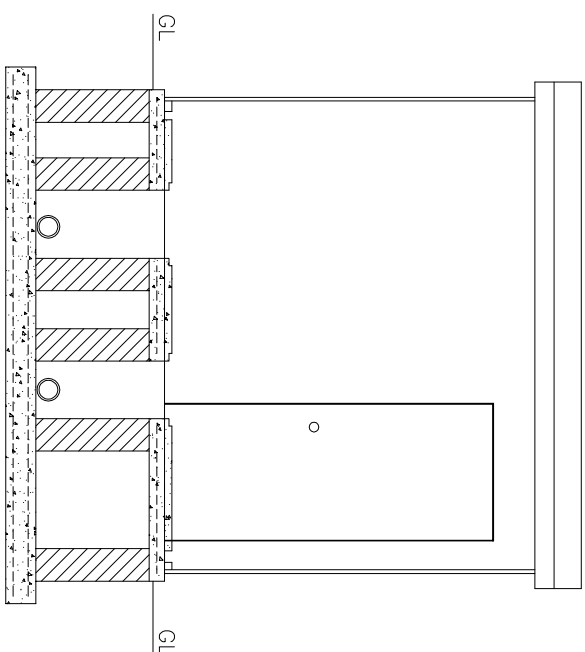
REAR ELEVATION



SIDE ELEVATION

SUBSTATION DOORS TO MEET NORTHERN POWERGRID SPECIFICATION WITH 1810x2175mm HIGH BRICKWORK OPENING.

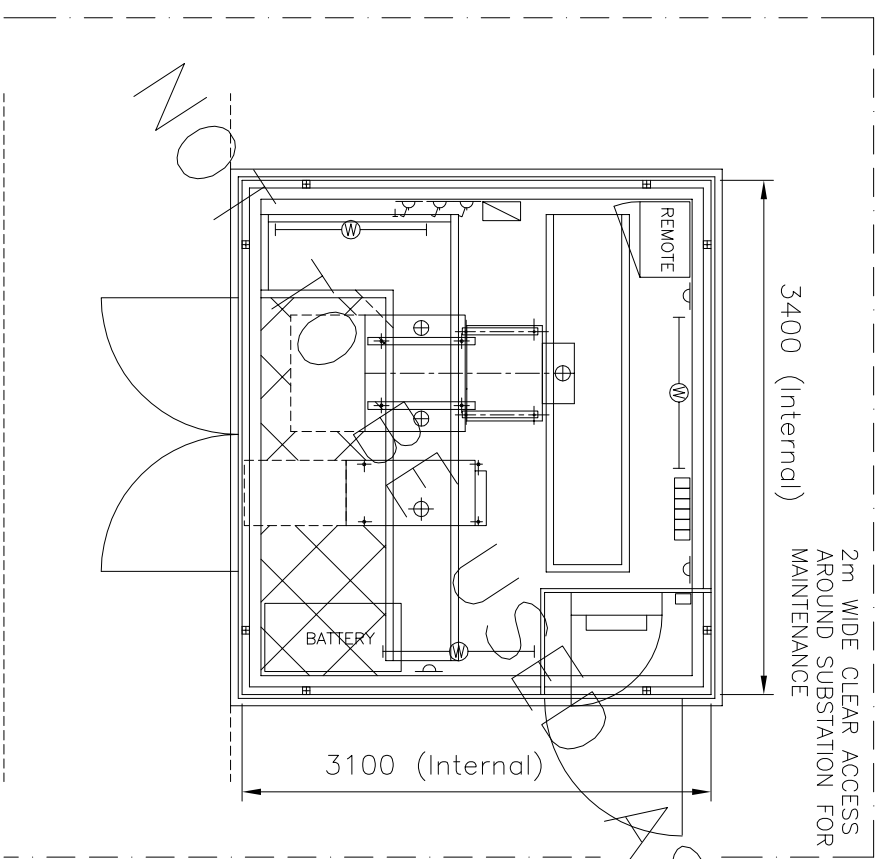
50 x 200mm REBATE TO ACCEPT PREFABRICATED ENCLOSURES



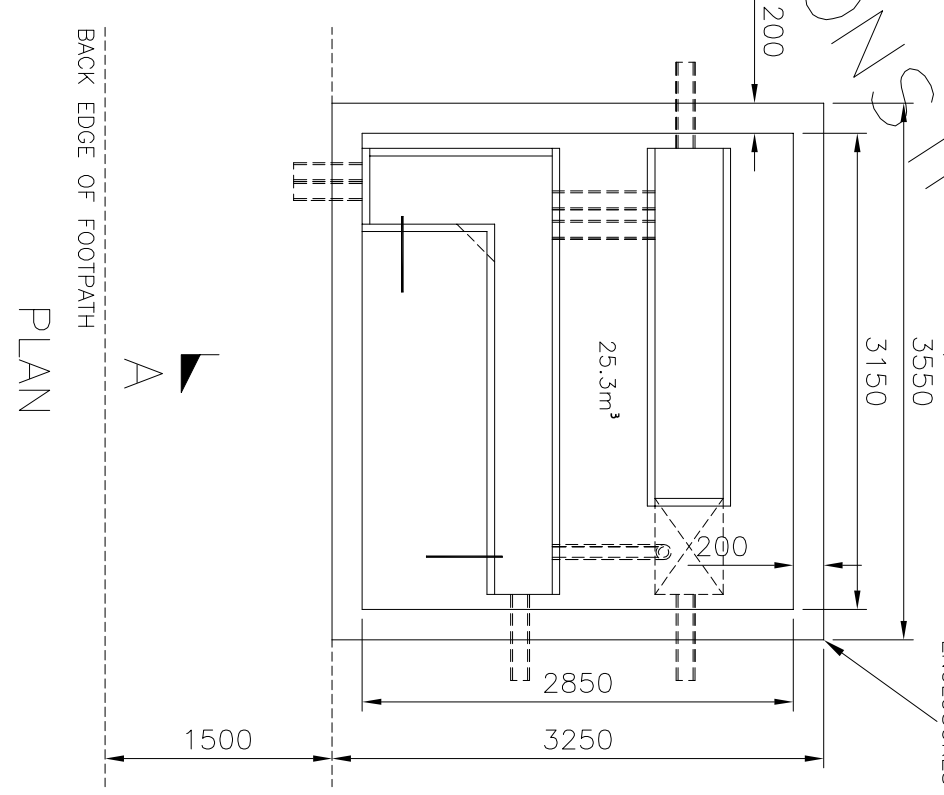
SECTION A-A

NOTES

Substation doors to be set back a minimum of 1500mm from back edge of footpath. Any proposed reduction in this clearance to be approved by Northern Powergrid following submission of site specific risk assessment and operational method statement.



ELECTRICAL LAYOUT



PLAN

		Lloyds Court, 78 Grey Street, Newcastle Upon Tyne, NE1 6AF	
Manufacturer Details		Document Details	
Sheet No. 1	Scale AS SHOWN	11kV RMMU WITH OPTIONAL EXTENSIBLE SWITCH IN PREFABRICATED ENCLOSURE	
Prepared By TM	Grid Reference	GENERAL ARRANGEMENT / PLAN & ELEVATIONS	
Revised	Checked By JJ	Ref No. C993908	Historic Drawing No.
Date Issued 17.05.16	Revision B	Notes	