



School Travel Plan

Author	Shane Baker	Date: February 2024
Last reviewed on:	9 th February 2024	
Next review due by:	February 2025	



Aim

Our school travel plan is designed to promote safe, sustainable, and efficient transportation methods for learners, staff, and visitors, with the overarching goal of reducing traffic congestion, enhancing road safety, and minimising environmental impact. By implementing this plan, we aim to encourage active modes of travel such as walking, cycling, and public transportation, thereby promoting physical activity and reducing carbon emissions associated with vehicular transport. Additionally, our plan seeks to foster a sense of community by promoting safe routes to school, collaborating with local authorities, and engaging with stakeholders to address transportation challenges effectively. Through ongoing evaluation and adaptation, we are committed to creating a transportation culture that prioritises the well-being of our school community and the wider environment.

School Details

Cann Bridge School
Eden Valley Gardens
Estover
Plymouth
PL6 8EE

URN: 113645

DfE number: 879/7063

What3words: [what3words.com/burst.lock.spit](https://www.what3words.com/burst.lock.spit)

Email cannbridgereception@torbridge.net

Website: www.cannbridgeschool.co.uk

Cann Bridge School is a local authority maintained special school for children and young people aged 3 to 19 years. We welcome learners from Plymouth, Devon, and Cornwall, with a capacity for 92 pupils; in 2024 the school will have two new modular classrooms installed to increase the school pupil admission number (PAN) to 108.

Our school is specifically designed for children and young people with complex cognition and learning needs, all of whom have an Education, Health, and Care Plan, indicating either Severe Learning Difficulty or Profound and Multiple Learning Difficulty. Additionally, the majority of pupils also have additional specific learning difficulties outlined within their EHCPs which include Downs Syndrome, Autistic Spectrum Condition, speech and language difficulties, physical disabilities or a complex medical condition.

Established in 1963 as Downham School, the school was purpose rebuilt, relocated and reopened as Cann Bridge School in September 2012 on the Tor Bridge Partnership site. The partnership consists of four individual schools which are Tor Bridge High, Tor Bridge Primary, Plym Bridge Nursery School & Children's Centre and Cann Bridge.

At the time of writing this policy:

- Paid employees: 137 paid members of staff, mixture of full and part-time staff (98.82 FTE)
- Learners: 95

Opening Times School (Term Time Only)

7.00 am – 7.00 pm School building open to staff

8.00 am – 4.00 pm reception operating hours

9.15 am – 3.00 pm School building open to learners

Term dates are available on our website.

The Eden Valley Gardens entrance is used throughout the day and is the only vehicular access to the site. The area around the school is a 20 mph zone and a 5 mph limit on the school site. Miller Way has a zebra crossing, speed camera and road calming measures including a zebra crossing. Eden Valley Garden is a car free road zone besides a restricted waiting times in the parent/carer drop-off bays outside of the school grounds.

How do our learners get to and from school?

The following methods of transport are regularly available to learners from our school; -

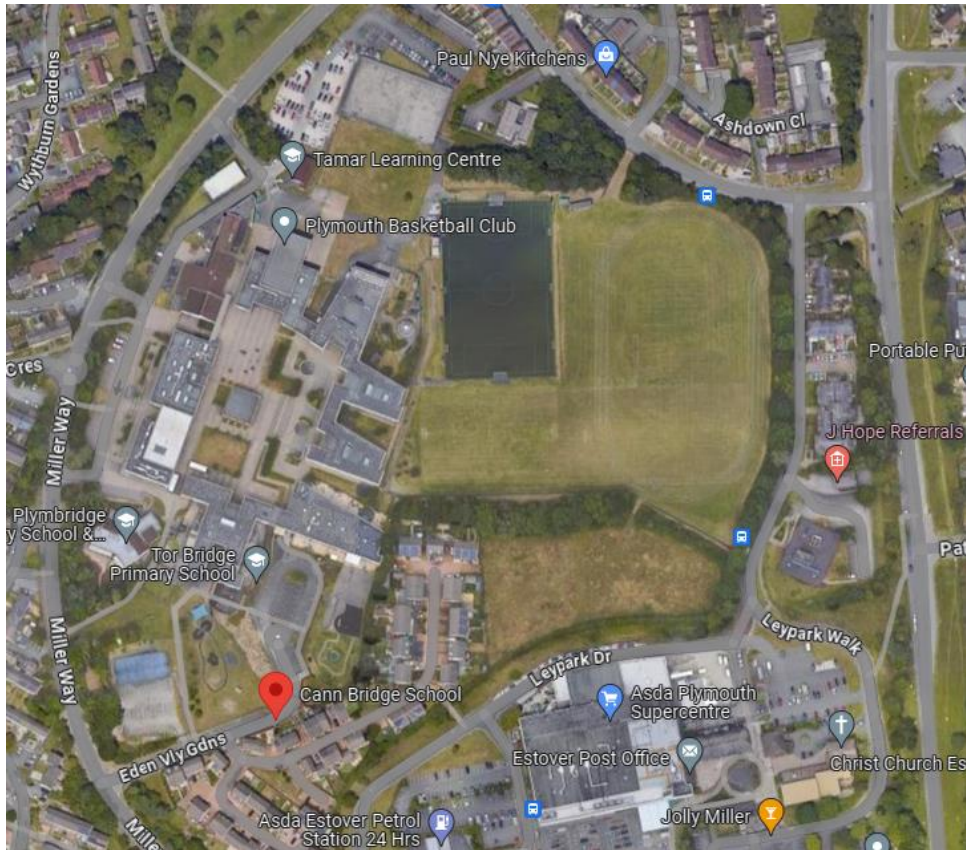
- Walking
- Car driven by parents
- Car driven by others
- Cycle
- Local Authority – School Transport - Minibus
- Local Authority – School Transport - Taxi
- Local public bus

How do our staff get to and from school?

The following methods of transport are regularly available to pupils from our school; -

- Walking
- Car - Self
- Car – Car Share
- Cycle
- Local public bus

Location



Aerial map of Cann Bridge on the Tor Bridge Partnership site



Entrance to Eden Valley Gardens, from Miller Way



Eden Valley Gardens



Signage approaching the school

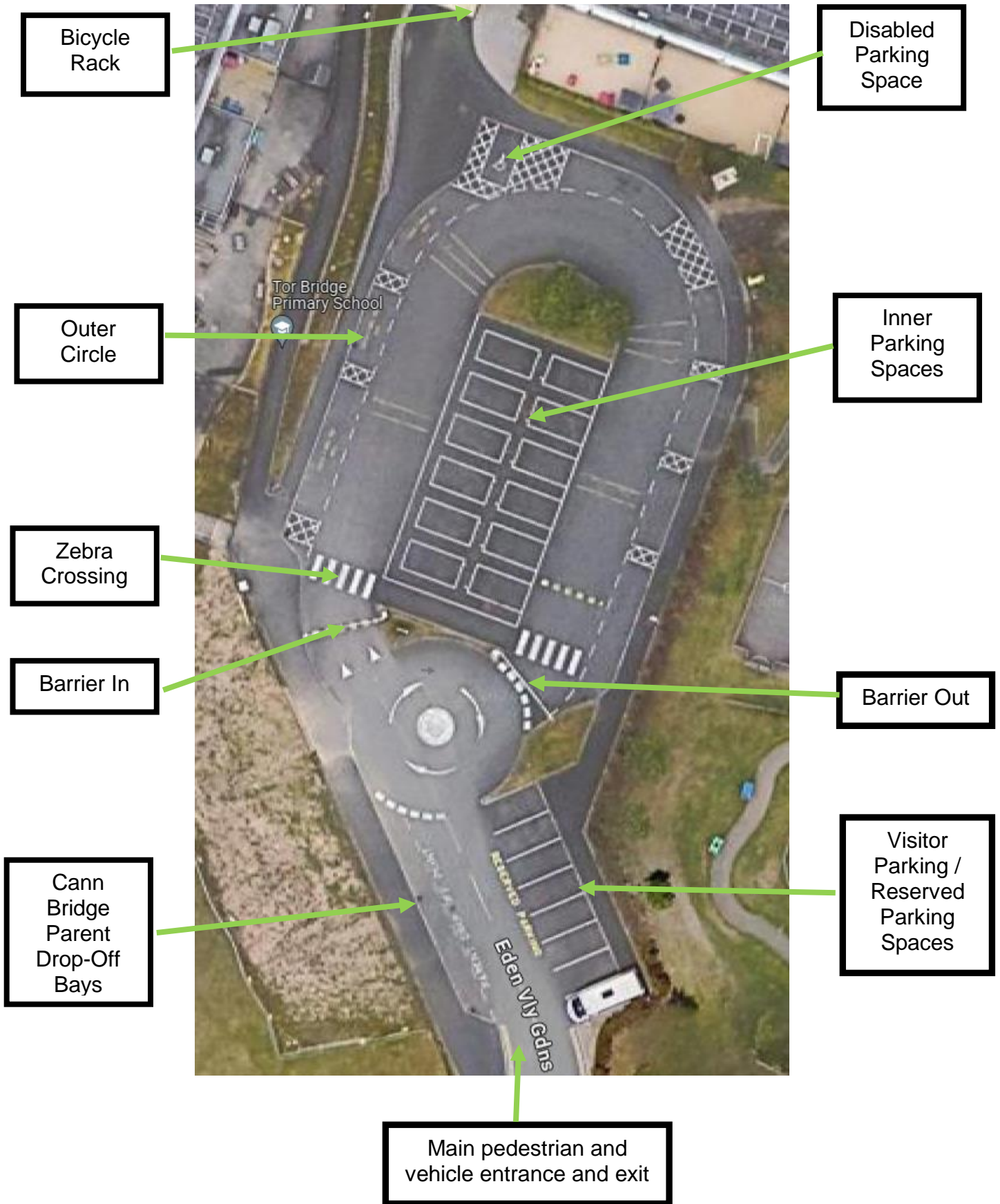


Entrance to Cann Bridge School



Entrance to Cann Bridge School Reception

Main Entrance Car Park Procedures



Carpark/Barrier

- During the term time, the school gates are unlocked at 7am and locked at 7pm.
- The school barriers are operational at all times.
- To gain access, press the bell button on the intercom.
- In the morning, barriers lock at 9:15 a.m. Learners should not disembark from school transport until this time (unless there is a direct request for assistance from a vehicle or for medical reasons), as vehicles can still gain access and will be moving around the carpark. The barrier then unlocks at 9:25 a.m. so buses can leave and manoeuvre around the car park. Children must all be safely inside the school by this time, unless one of the buses/taxis are running late.
- In the afternoon, the entry and exit barriers in the car park lock at 2:55 p.m., therefore vehicles may still be moving around until this time. The barriers then unlock at 3:10 p.m., allowing staff 10 minutes to ensure all pupils board the buses safely.
- Pupils should only leave the school building after 2:55 p.m. when they have been called by the assembly lead. This occurs after verifying with reception that the barrier is locked and it is safe to begin dismissal.
- If staff notice a vehicle in the car park that has not been called, please inform the assembly lead so they can dismiss them all together; do not start dismissing pupils independently.
- Visitors and school transport staff should adhere to the instructions of the patrol staff and refrain from moving their vehicles during the lockdown period. Any breaches may result in consequences, including being banned from the school site.
- If you observe vehicles moving prematurely, please record the vehicle registration number and report this to reception. If possible, signal and request the vehicle to remain stationary.
- The outer circle within the barriered zone is designated for school transport minibuses to park at the beginning and end of the day.
- The inner parking spaces within the barriered zone are reserved for taxis and parents/carers collecting or dropping-off learners.
- Between the hours of 9:30 a.m. and 2:30 p.m., visitors can park within the barriered zone but must vacate this area before the start/end of the school day.
- The school also provides a dedicated parent/carer drop-off zone outside of the barriered zone to allow parents to escort their children to the main entrance. Additionally, there is extra time limited drop-off spaces outside of the school grounds on Eden Valley Gardens.
- Reserved visitor parking spaces can be arranged through reception. Users will be issued a parking permit; those without a permit will be instructed to move their vehicle. If there is a cone within a parking space, please do not move this cone as the space has been reserved (this may be accompanied with a notice). One space, as per the visual and marked on the tarmac, is dedicated for the school minibus.
- The car park is subject to ongoing monitoring. Persistent breaches of the procedures outlined above will result in actions taken in accordance with our Code of Conduct policies.
- No vehicles should park on the roundabout.



Bicycle Rack

Outside of the school reception is a bicycle rack available for staff and visitors to the school to use. This is under cover. Please do not leave bicycle locks attached to the bars when not in use.

Local Authority School Transport for learners

Local Authority School Transport can be provided for learners who meets the criteria outlined in the specific local authority's school transport policy. There is no automatic entitlement to school transport; however, an individual needs assessment will be conducted by the local authority school transport team to determine eligibility. School Transport can be arranged in various forms, including a minibus, taxi, or petrol allowance (which enables parents/carers to transport their own child to and from school). The type of transport allocated will be based on the information provided about your child on the application form submitted directly to the local authority.

Please note that Cann Bridge School is not involved in the arrangements for local authority school transport. It is the responsibility of parents and carers to notify the transport team of any changes, including a child's absence or if alternative arrangements have been made, such as respite collection/drop-off. Additionally, as a reminder, the school should also be informed of any absences or changes to pick-up/drop-off arrangements.

Parent/carers wishing to apply for School Transport, please follow the links below:

Plymouth: To apply for free school transport for a pupil living in Plymouth, please fill out the online form: [Apply for school transport | PLYMOUTH.GOV.UK](https://plymouth.gov.uk/apply-for-school-transport)

Cornwall: To apply for free school transport for a pupil living in Cornwall, please visit their website and click the 'Application for Home to School Transport': [Home to School Travel Assistance - Cornwall Council](https://www.cornwall.gov.uk/home-to-school-transport)

Devon: To apply for free school transport for a pupil living in Devon, please visit their website or call 0345 155 1019: [Applications – Education and Families \(devon.gov.uk\)](https://www.devon.gov.uk/education-and-families)

Staff Car Parking

The school has dedicated staff car parking in two car parks on the school site.



Staff Car Park – Eden Valley Gardens



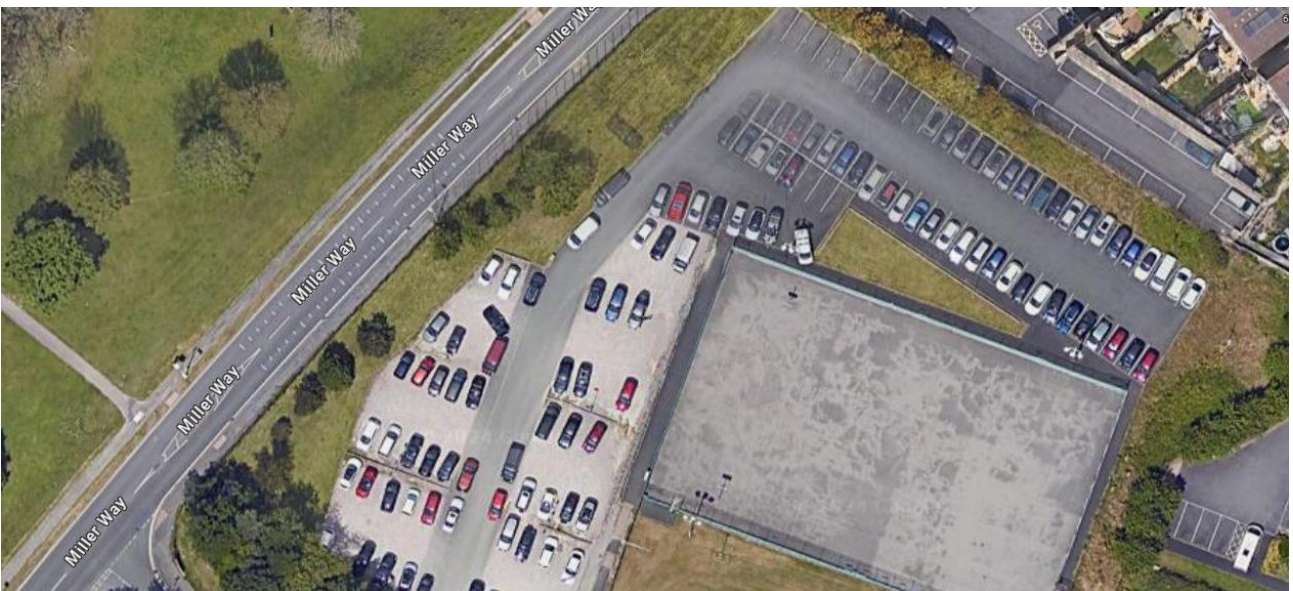
There are 22 dedicated staff parking spaces for Cann Bridge staff in a shared car park with Tor Bridge Primary. There is a one-way system in place. On entering the first lane is for Tor Bridge Primary staff and spaces are line marked blue. The second lane is for Cann Bridge school staff and these spaces are line marked green (outlined above in the picture). This car park is open from 7am until 9am, reopening 3pm until 7pm. The car park is locked during the school day to secure the school site. Should staff need to exit during the school day, the code is available from reception or Staff Handbook; please ensure that the gate is locked on entering and exiting.



Staff Car Park – Entrance to Tor Bridge Partnership site car park on Miller Way



Staff Car Park – Tor Bridge Partnership site car park, off Miller Way



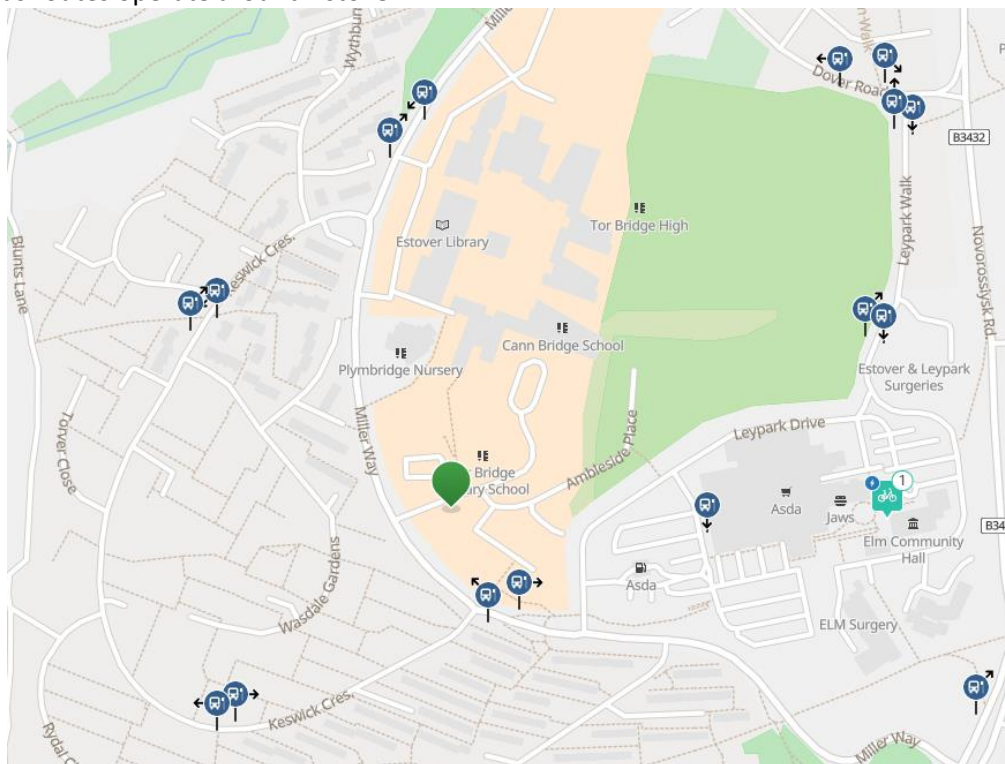
There is also a large staff car park for school staff. This is used by Plym Bridge Nursery, Cann Bridge School, and Tor Bridge High. This is open during term time from 7 am until 7 pm.

Local Bus Routes



Picture of bus stops on Miller Way

Cann Bridge School is well served by bus routes and enjoys good links with the rest of the city. The following bus routes operate around Estover.



Plymouth Citybus: 51, 50, 27, 106, 107, 34 (from various bus stops in our local vicinity as identify in the map above). The 51 and 50 at the time of publication run every 20 minutes during school operation hours from the bus stops shown in the picture above. To plan a bus journey, please go to:

www.plymouthbus.co.uk

Train

From Plymouth Train Station to Cann Bridge the journey is approximately 53 minutes by vehicle. The most direct route by bus from the train station would be the number 50. To plan a train journey, please go to:

www.nationalrail.co.uk.

Parent/carer drop-off

Parents and carers can use the parking spaces in the inner circle of the barriered spaces in line with the guidance earlier in this policy. Alternatively, parents can use our dedicated drop-off bays on the school site, or on Eden Valley Gardens. Asda have very kindly agreed for families parking in their car park during both drop-off and collection and we would strongly encourage you to utilise this kind offer with a less than 5-minute walk to the school. Parents and carers should bring and collect their child from reception.

Parking Enforcement Measures

PCSOs, Traffic Enforcement Officers and the Plymouth City Council 'camera car' often take time to visit the school during peak periods before and after school. This has had a positive effect on the habits of parents/carers and their parking. We therefore must stress that you should not park anywhere other than the drop-off bays in Eden Valley Gardens or on the school site, to avoid being fined. Letters from the school have been written to parents/carers in order to ensure the safety of pupils whilst on the site.

We request all staff, visitors and parent and carers to avoid parking in the new built estate opposite the school, off Eden Valley Gardens. We value respecting our neighbours and any issues can be reported to reception.

Request parking enforcement

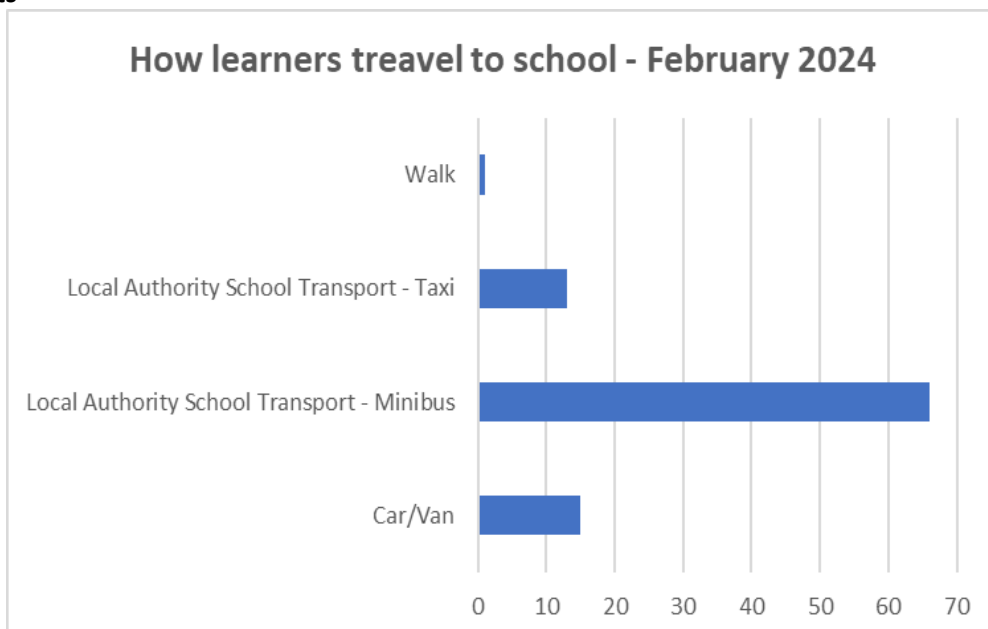
Vehicles parked on footways, yellow lines, school restrictions or in front of dropped kerbs can cause obstruction, congestion, and even endanger pedestrians and other road users. You can request a Civil Enforcement Officer on duty nearby to visit the location. If necessary, a Penalty Charge Notice will be issued: [Parking - Request parking enforcement - PLYMOUTH.GOV.UK \(achieveservice.com\)](https://www.plymouth.gov.uk/achieveservice.com)

You can report any parking problems that are causing you concern in the area covered by Plymouth City Council. PCC will investigate whether they can help with the issues that you have raised.

Whilst Cann Bridge School would never want any families to be fined unnecessarily, we do have to put the safety of the children and the current inconvenience for our neighbours at the forefront of our actions.

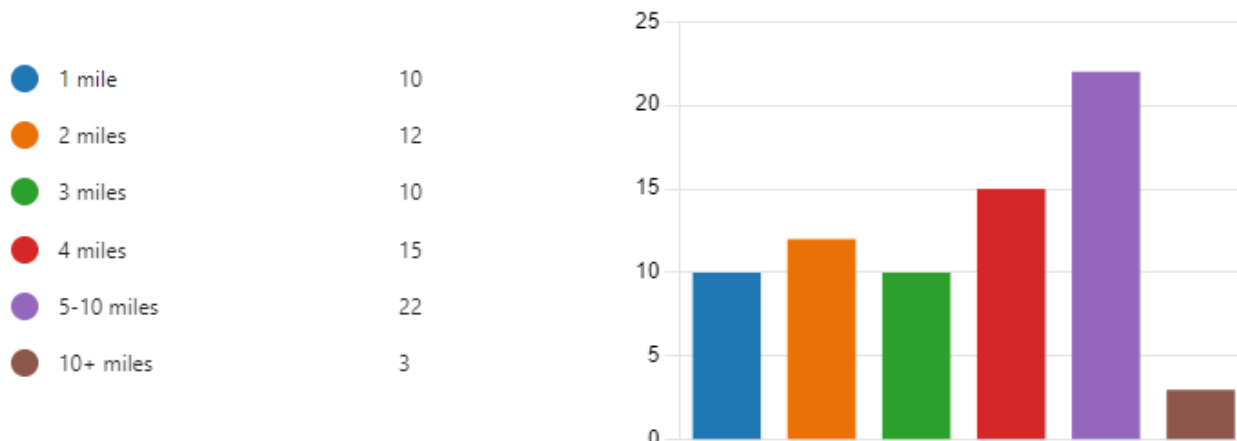
Please be aware that we will encourage all residents to report any issues. Therefore, please do all that you can to walk to school and in those situations where the only option is vehicular travel, use the drop-off bays appropriately and do not park inconsiderately or illegally in the local area.

Pupil Results

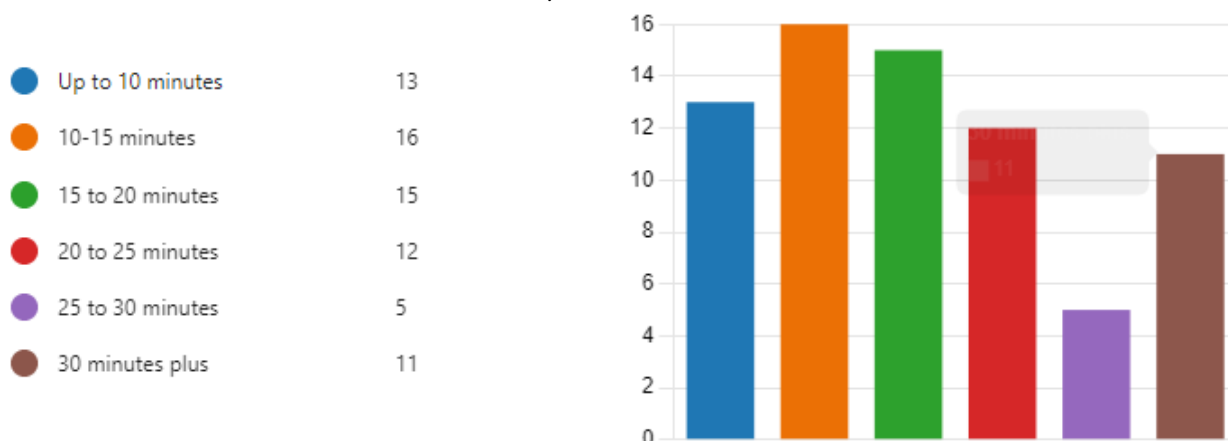


Summary of Staff & Governor Survey

- In February 2024, 72 members of staff and Governors responded to the Staff Travel Survey
- 73.5% travel to school by car (alone). 13% car share or walk. Less than 10% commute by bus.
- Staff fed back that they primarily choose this mode of travel to school primarily based on proximity to the workplace/school, convenience, time efficiency and work/school hours.
- Geographically staff travel from a wide area:



- The time it takes staff to commute to school/work also varies:



- 18% of staff expressed challenges with their current mode of transport to school/work
- Only 18% had considered an alternative travel option to commute to school/work
- 8% of staff would be interested in a carpooling/share programme and 17% said maybe.
- 99% of staff said that they had no safety concerns regarding their current travel arrangements to school/work
- 7% of staff felt 'very' environmentally conscious of their transport choice, 56% 'somewhat' conscious and 38% felt that it 'could be improved'
- 15% of staff are interest in initiatives to promote sustainable commuting options, 42% said they may be interested and 43% that they were not.

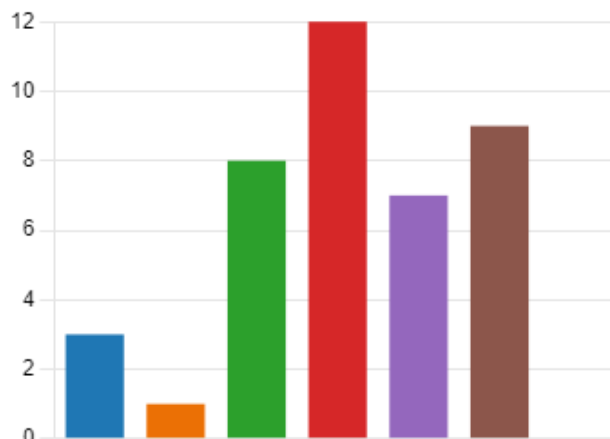
Summary of suggestions from staff to improve school/work travel

- Increase parking spaces closer to the school site for staff
- Explore opportunities for electric scooter or a bike station
- Electric vehicle charging points
- Explore Cycle to Work schemes
- Electric car leasing schemes
- Promoting and establishing a carpooling/share program
- Explore concession bus pass schemes

Summary of Parent Carer Survey

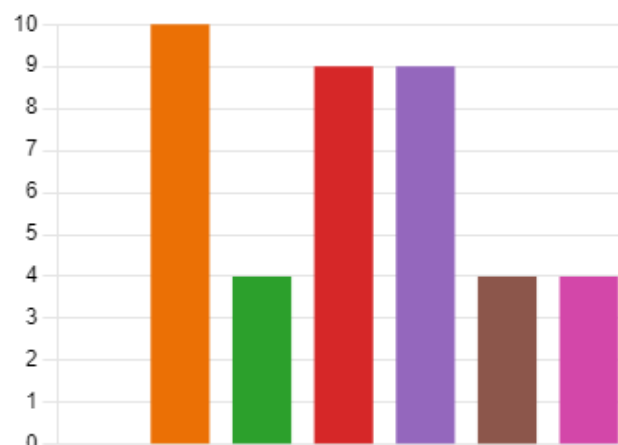
- In February 2024, 40 parent and carers responded to the Parent Carer Travel Survey
- 80% of learners travel to school by Local Authority Transport – minibuses, 2.5% by Local Authority Transport – taxis, 12.5% by car by parent/carers, 2.5% by public bus and 2.5% walking.
- Geographically learners travel from a wide area:

1 mile	3
2 miles	1
3 miles	8
4 miles	12
5 miles	7
5 to 10 miles	9
10 miles plus	0



- The time it takes learners to commute to school also varies:

Up to 10 minutes	0
10 to 20 minutes	10
20 to 30 minutes	4
30 to 40 minutes	9
40 to 50 minutes	9
50 to 60 minutes	4
60 minutes plus	4



- 43% of parent and carers reported challenges with their child’s current mode of transportation which include challenges with the Plymouth City Councils School Transport Team
- 18% of parent/carers have consider alternative travel options
- 18% of parent/carers have identified safety concerns regarding their child’s current travel arrangements which includes specifics to Plymouth City Council’s School Transport Team, the school pedestrian gate being locked at times leading to pedestrians being forced into the road, parking at the school can be difficult.

Summary of suggestions from parent/carers to improve school travel

- For the school to feedback collectively to the Local Authority School Transport Team
- Ensuring the school gates are unlocked in the morning
- Reduce and report others parking on double yellow lines outside of the school

Cann Bridge School Travel Plan					
Where are we now?					
<p>Developing our new School Travel Plan has identified what is work, areas for improvements and also development areas at Cann Bridge School for both staff and learner travel arrangements, including addressing challenges, enhancing safety measures, and promoting sustainable commuting options. Strategies such as expanding parking facilities, promoting alternative modes of transport, and addressing issues with the Local Authority Transport Team are recommended to create a more efficient and safe travel environment for all stakeholders.</p>					
What do we want to change?					
<ul style="list-style-type: none"> • Improve signage for reserved parking spaces • Improve signage for parent/carer drop-off bay • Improve site lock up and unlocking routine to ensure pedestrian gate is open during school operating hours • To meeting with Plymouth City Council School Transport Team to share the collective voice of parent and carers • Consult with Plymouth City Council regarding parking space limitation for staff and discuss possible expansion solutions • Explore electric vehicle points • Explore cycle to work schemes • Explore electric car leasing schemes • Establish and promote a staff carpooling/sharing programme • Explore bus concessionary passes options • Continue to work with Tor Bridge Primary to reduce congestion and parking habits on Eden Valley Gardens 					
Our Targets					
Action	When	Who	Resources	Success Measures	Impact
Improve signage for reserved parking spaces	April 2024	Administration Team	Clip frames attached to fence	Installed and being used	Improved communication and utilisation of spaces
Improve signage for parent/carer drop-off bay	April 2024	Administration Team	Signs attached to fence	Installed signage	Improve clarity over spaces and reduce neighbouring schools parking on school site
Improve site lock up and unlocking routine to ensure pedestrian gate is open during school operating hours	Immediately	Sites Team	None	Gate is open	Reducing the need for reports for the gate to be unlocked and pedestrians being forced into the road.
To meeting with Plymouth City Council School Transport Team to share the collective voice of parent and carers	March 2024	Headteacher & LA School Transport Team	Survey results	Meeting held and identified next steps	Improvements made to School Transport to support learner and improve service for families.

Consult with Plymouth City Council regarding parking space limitation for staff and discuss possible expansion solutions	March 202	Headteacher and PCC	N/A	Meeting held to discuss options and challenges	Decision received from PCC on concerns raised and potential increase in parking spaces.
Explore electric vehicle points	July 2024	School Business Manager	Funding	Explored options for electric vehicle points for sites. Consulted with wider campus for plans. Explore government bursaries.	Improve sustainability and environment factors. Future proofing vehicle accessibility to site and any future school vehicle changes.
Explore cycle to work schemes for staff	July 2024	HR Assistant		Explored options available in consultation with PCC HR Department. Promote options with staff and include in Staff Handbook.	Improve sustainability and environment factors. Reduce the number of vehicles using the site identified through future surveys.
Explore electric car leasing schemes for staff	July 2024	School Business Manager		Explored options available in consultation with PCC HR Department. Promote options with staff and include in Staff Handbook.	Improve sustainability and environment factors
Establish and promote a staff carpooling/sharing programme for staff	April 2024	HR Assistant	Noticeboard	Establish a car pooling/share scheme in the staffroom whereby drivers and passengers can sign up.	Reduce the number of vehicles to the school site. Improvements to environment factors. Reduce congestion.

Explore bus concessionary passes options for staff	April 2024	HR Assistant		Explore options available in Plymouth and promote to staff any schemes available.	Reduce impact of cost being an factor of accessing public buses. Reduction in vehicles accessing the school site.
Continue to work with Tor Bridge Primary to reduce congestion and parking habits on Eden Valley Gardens	Ongoing	Headteacher and TBP		Reduction of complaints from local neighbours. Reduction of reports of vehicles parking on pavements, double yellow lines.	Improved safety outside of the school boundary. Families follow the agreed policies and procedures and the highway code.
What can we do next?					
Re-survey all stakeholders in 1 year to measure improvements and devise the next strategy.					