



NO.SD309D-OFS-DS

Outdoor Double-sided Freestanding Advertising Kiosk

Sunlight Readable

Brightness is paramount when using outdoor screens these displays use commercial grade Ultra High Brightness panels (2,000 cd/m²), more than 5 times brighter than a standard home TV to allow easy readability in direct sunlight. The display also has an ambient light sensor that will alter the screens brightness based on the displays surrounding light levels. This leave sthe screen with the best clarity while also conserving energy.

Outdoor Enclosure

Designed with robust, corrosion protected, casing to protect against the elements and the public. With an IP65 rating, it keeps out all airborne particles as well as being protected from any wet weather conditions and also feature waterproof over molded AV connectors. The enclosures are made from mild steel and have thermally toughened glass.

Temperature Control

The internal air-conditioning system allows the screens to be in constant use in an outdoor environment. Internal fans keep the panel and other internal components at the optimum working temperature; ensuring a long and reliable life for your display.

Easy Updates

Update the screen via the simple plug and play USB method. You can control the screen from anywhere in the world by upgrading to a Network version.

Removable Base

If desired the base can be removed before installation for a more streamline appearance.

Network CMS Upgrade

We also offer cloud basis network CMS if required, and you can run the third party Digital Signage software via our Android PC board too.

Sturdy Enclosure

Made from mild steel, the enclosure is strong enough to protect the displays components from outside harm such as vandals.

Touch Screen Upgrade

An IP65 Rating means the display is able to withstand all weather conditions, wet and dry and also features waterproof over molded HDMI connectors.



Sunlight Readable



24/7 Usage



Touch Screen Upgrade



Android Media Player



Vandal Proof



Integrated Temperature Enclosure Control



Steel



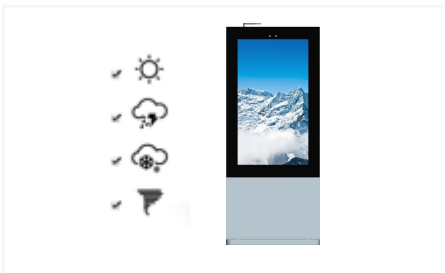
Water Proof

Product Application

Outdoor advertising player digital signage Waterproof & Lightning protection LCD display screen kiosk

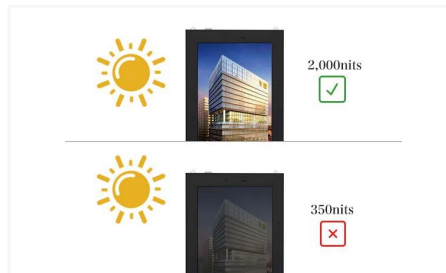


Product Features



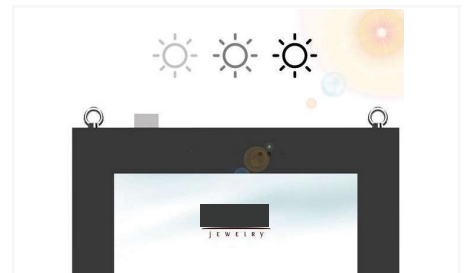
Weather Proofing

Designed for outdoor purpose, all weather proofing!



High Brightness Screen

Screen would get up to 2,500nits as 5 times more than normal display, makes the screen is readable even under the strong sunlight.



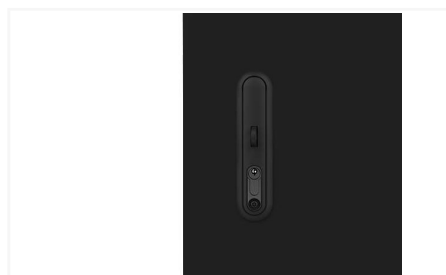
Anti-glare Tempered Glass

Strong anti-glare tempered glass will ensure passenger would not see the reflected light anytime from any angle.



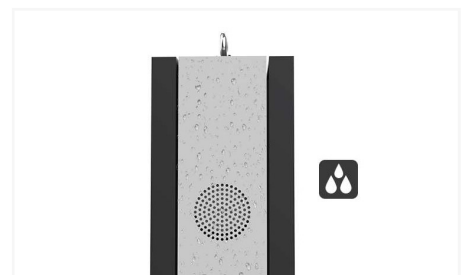
Lifting Bolt

In the consideration of safety and carry on issue, Screenage put two strong lifting bolt on the tope of the kiosk to avoide this issue.



Security Lock

Double lockes with special &unique keys for the public safety, ensure people can't open that unless they have the rightkey.



10 Watt Loudspeaker

Two 8 ohm 10 watt outdoor use loudspeaker on the side, ensure passengers could hear what you want theyhear.

Specification Sheet

Mode.No		SD309D-OFS-DS						
2 Panels	Display Size(inch)	43"	49"	55"	65"	75"	86"	
	Resolution	1920x1080	1920x1080	1920x1080	1920x1080	3840*2160	3840*2160	
	Active Display Area(mm)	941.2 x529.4	1073.5 x603.0	1209.6 x680.4	1428.5 x803.5	1650.3 x928.3	1938.2 x1098.3	
	Aspect Ratio	16:09	16:09	16:09	16:09	16:09	16:09	
	Brightness(cd/m2)	2000nit	2000nit	2500nit	2500nit	2500nit	2500nit	
	Contrast Ratio(Typ.)	1000:1	1000:1	5000:1	5000:1	5000:1	5000:1	
	Viewing Angle(H/V)	178/178	178/178	178/178	178/178	178/178	178/178	
	Color	16.7M	16.7M	16.7M	16.7M	16.7M	16.7M	
	Response Time(G-to-G)	6ms	6ms	6ms	6ms	6ms	6ms	
	Operation Hour	24/7	24/7	24/7	24/7	24/7	24/7	
Sound	Loud Speaker	5W, 8Ω (2sets)	5W, 8Ω(2 sets)	5W, 8Ω(2 sets)	5W, 8Ω (2 sets)	5W, 8Ω(2 sets)	5W, 8Ω (2sets)	
Power	Type	Internal	Internal	Internal	Internal	Internal	Internal	
	Power Supply	AC 100 – 240 V ~ (+/- 10 %),50/60 Hz						
	Power Consumption	Max[W/h]	100	120	150	260	280	360
		Sleep mode	less than0.5W	less than0.5W	less than0.5W	less than 0.5W	less than0.5W	less than0.5W
Off mode		less than0.5W	less than0.5W	less than0.5W	less than 0.5W	less than0.5W	less than0.5W	
Mechanical Spec	Protection Glass	Yes	Yes	Yes	Yes	Yes	Yes	
	Stand Type	Foot Stand	Foot Stand	Foot Stand	Foot Stand	Foot Stand	Foot Stand	
Environmental	Operating Temperature	-40°C ~ 50°C	-40°C ~ 50°C	-40°C ~ 50°C	-40°C ~ 50°C	-40°C ~ 50°C	-40°C ~ 50°C	
	Storage Temperature	-30°C ~ 55°C	-30°C ~ 55°C	-30°C ~ 55°C	-30°C ~ 55°C	-30°C ~ 55°C	-30°C ~ 55°C	
	Operating Humidity	10% ~ 80 %	10% ~ 80 %	10% ~ 80 %	10% ~ 80 %	10% ~ 80 %	10% ~ 80 %	
	Storage Humidity	5% ~ 95%	5% ~ 95%	5% ~ 95%	5% ~ 95%	5% ~ 95%	5% ~ 95%	
	Cooling System	Powerful Turbofan & cross flow fan/Air condition (Optional)						
	Hypothermia protection	Heater (aluminium sheet warmer) (Optional)						
OS	2 Android Media Players	Processor	Rockchip® 3288 (1.8GHz, octa core)					
		RAM	2G					
		Flash	8G EMMC					
		USB	USB2.0 HOST(X2)					
		LAN	10M/100M Ethernet(Network version screen only)					
		External memory	8GB SD card(up to 32G)					
		Multimedia	Video(MPG,AVI,MP4,RM,RMVB,TS),Audio(MP3,WMA),Image(JPG,GIF,BMP,PNG)					
		Media Resolution	1920*1080					
		Wi-Fi	802.11b/g/n Ethernet(Network version screen only)					
Operating System	Android 7.1							
Certification	Safety	CE ROHS IP65						
Accessories	Included	Scheduling software, Remote control, Key, Power cable, SD card						
	Quality assurance	1 year						
	Type of packaging	Carton box /honeycomb box + wooden case						

**get
service
now**

www.starvisualdisplay.com
info@starvisualdisplay.com

OUR SOLUTIONS



Window Facing Display Solutions



Outdoor Digital Singage Solutions



Indoor Digital Signage Solutions



LCD Video Wall Solutions



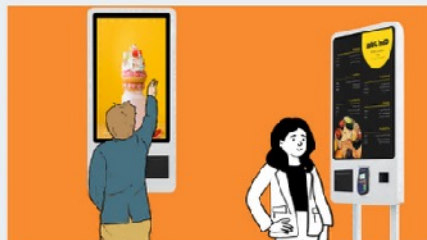
Digital Menu Board Solutions



Shelf Edge Stretched Display Solutions



Outdoor Drive Thru Solutions



Self-service Payment Kiosk Solutions



Interactive Whiteboard Solutions



Shipping Method



info@starvisualdisplay.com
 To get the service & support today!