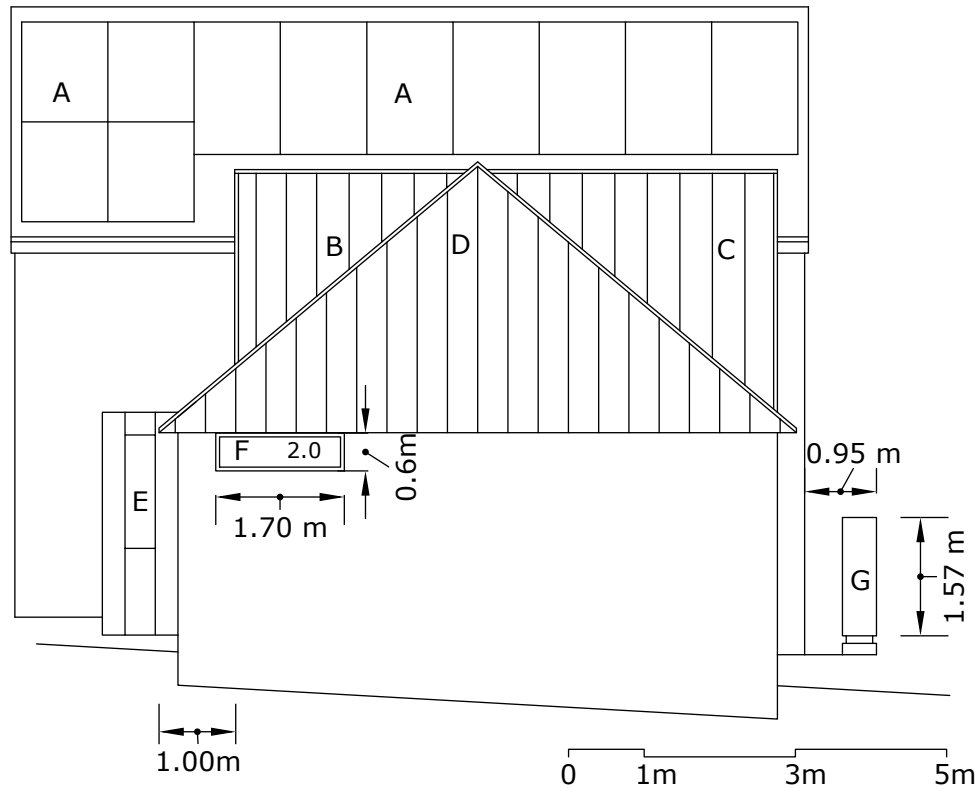


Proposed East (Side) Elevation



Key:

- A - Flush mounted, solar panels; GSE Solar In-roof system.
 - B - Front facing dormer to create hallway transition between storeys. Set back from eaves by 1.0m. Clad in pre-weathered, dark grey, standing seam Zinc; NedZink NEO.
 - C - Rear dormer. Existing ridge retained and set back from eaves. Clad in NedZink NEO.
 - D - Gable end cladding in NedZink NEO.
 - E - Open porch/canopy, with green roof, at main entrance. Area <math>< 3\text{m}^2</math>, height <math>< 3\text{m}</math>.
 - F - New window. Non-opening, obscure glazed, 1.7m width x 0.6m height. Sill 1.4m above internal floor level.
 - G - Vaillant Arotherm Plus 12kW air source heat pump. Height excluding footings.
- * Refer to window specification schedule and manufacturer brochures.

Proposed East Elevation
 Scale 1:100 @ A4
 Drawn by R Afinowi-Luitz
 17 April 2024
 Version 2

