

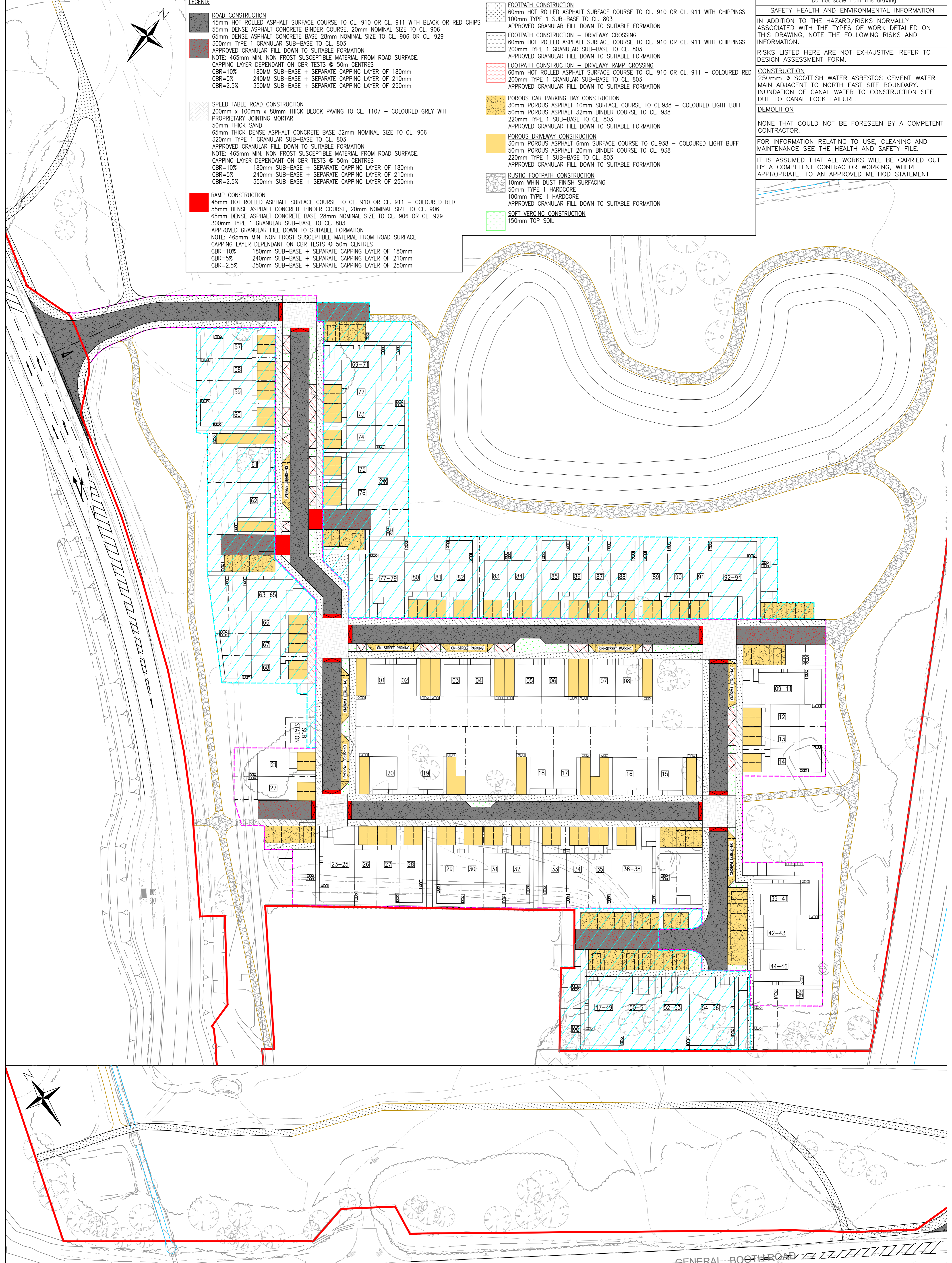
Do not scale from this drawing.

**LEGEND:**

- ROAD CONSTRUCTION**  
 45mm HOT ROLLED ASPHALT SURFACE COURSE TO CL. 910 OR CL. 911 WITH BLACK OR RED CHIPS  
 55mm DENSE ASPHALT CONCRETE BINDER COURSE, 20mm NOMINAL SIZE TO CL. 906  
 65mm DENSE ASPHALT CONCRETE BASE 28mm NOMINAL SIZE TO CL. 906 OR CL. 929  
 300mm TYPE 1 GRANULAR SUB-BASE TO CL. 803  
 APPROVED GRANULAR FILL DOWN TO SUITABLE FORMATION  
 NOTE: 465mm MIN. NON FROST SUSCEPTIBLE MATERIAL FROM ROAD SURFACE.  
 CAPPING LAYER DEPENDANT ON CBR TESTS @ 50m CENTRES  
 CBR=10% 180MM SUB-BASE + SEPARATE CAPPING LAYER OF 180mm  
 CBR=5% 240MM SUB-BASE + SEPARATE CAPPING LAYER OF 210mm  
 CBR=2.5% 350MM SUB-BASE + SEPARATE CAPPING LAYER OF 250mm
- SPEED TABLE ROAD CONSTRUCTION**  
 200mm x 100mm x 80mm THICK BLOCK PAVING TO CL. 1107 - COLOURED GREY WITH PROPRIETARY JOINTING MORTAR  
 50mm THICK SAND  
 65mm THICK DENSE ASPHALT CONCRETE BASE 32mm NOMINAL SIZE TO CL. 906  
 320mm TYPE 1 GRANULAR SUB-BASE TO CL. 803  
 APPROVED GRANULAR FILL DOWN TO SUITABLE FORMATION  
 NOTE: 465mm MIN. NON FROST SUSCEPTIBLE MATERIAL FROM ROAD SURFACE.  
 CAPPING LAYER DEPENDANT ON CBR TESTS @ 50m CENTRES  
 CBR=10% 180MM SUB-BASE + SEPARATE CAPPING LAYER OF 180mm  
 CBR=5% 240MM SUB-BASE + SEPARATE CAPPING LAYER OF 210mm  
 CBR=2.5% 350MM SUB-BASE + SEPARATE CAPPING LAYER OF 250mm
- RAMP CONSTRUCTION**  
 45mm HOT ROLLED ASPHALT SURFACE COURSE TO CL. 910 OR CL. 911 - COLOURED RED  
 55mm DENSE ASPHALT CONCRETE BINDER COURSE, 20mm NOMINAL SIZE TO CL. 906  
 65mm DENSE ASPHALT CONCRETE BASE 28mm NOMINAL SIZE TO CL. 906 OR CL. 929  
 300mm TYPE 1 GRANULAR SUB-BASE TO CL. 803  
 APPROVED GRANULAR FILL DOWN TO SUITABLE FORMATION  
 NOTE: 465mm MIN. NON FROST SUSCEPTIBLE MATERIAL FROM ROAD SURFACE.  
 CAPPING LAYER DEPENDANT ON CBR TESTS @ 50m CENTRES  
 CBR=10% 180MM SUB-BASE + SEPARATE CAPPING LAYER OF 180mm  
 CBR=5% 240MM SUB-BASE + SEPARATE CAPPING LAYER OF 210mm  
 CBR=2.5% 350MM SUB-BASE + SEPARATE CAPPING LAYER OF 250mm

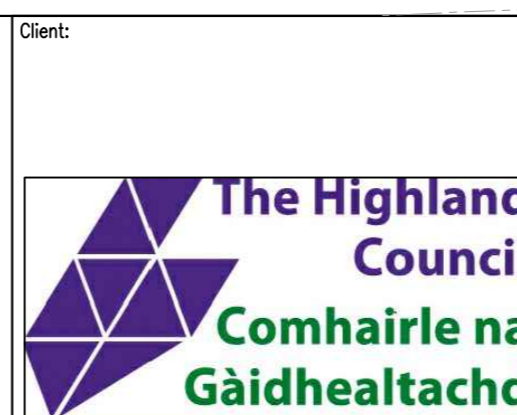
- FOOTPATH CONSTRUCTION**  
 60mm HOT ROLLED ASPHALT SURFACE COURSE TO CL. 910 OR CL. 911 WITH CHIPPINGS  
 100mm TYPE 1 SUB-BASE TO CL. 803  
 APPROVED GRANULAR FILL DOWN TO SUITABLE FORMATION
- FOOTPATH CONSTRUCTION - DRIVEWAY CROSSING**  
 60mm HOT ROLLED ASPHALT SURFACE COURSE TO CL. 910 OR CL. 911 WITH CHIPPINGS  
 200mm TYPE 1 GRANULAR SUB-BASE TO CL. 803  
 APPROVED GRANULAR FILL DOWN TO SUITABLE FORMATION
- FOOTPATH CONSTRUCTION - DRIVEWAY RAMP CROSSING**  
 60mm HOT ROLLED ASPHALT SURFACE COURSE TO CL. 910 OR CL. 911 - COLOURED RED  
 200mm TYPE 1 GRANULAR SUB-BASE TO CL. 803  
 APPROVED GRANULAR FILL DOWN TO SUITABLE FORMATION
- POROUS CAR PARKING BAY CONSTRUCTION**  
 30mm POROUS ASPHALT 10mm SURFACE COURSE TO CL.938 - COLOURED LIGHT BUFF  
 50mm POROUS ASPHALT 32mm BINDER COURSE TO CL. 938  
 220mm TYPE 1 SUB-BASE TO CL. 803  
 APPROVED GRANULAR FILL DOWN TO SUITABLE FORMATION
- POROUS DRIVEWAY CONSTRUCTION**  
 30mm POROUS ASPHALT 6mm SURFACE COURSE TO CL.938 - COLOURED LIGHT BUFF  
 50mm POROUS ASPHALT 20mm BINDER COURSE TO CL. 938  
 220mm TYPE 1 SUB-BASE TO CL. 803  
 APPROVED GRANULAR FILL DOWN TO SUITABLE FORMATION
- RUSTIC FOOTPATH CONSTRUCTION**  
 10mm WHIN DUST FINISH SURFACING  
 50mm TYPE 1 HARDCORE  
 100mm TYPE 1 HARDCORE  
 APPROVED GRANULAR FILL DOWN TO SUITABLE FORMATION
- SOFT VERGING CONSTRUCTION**  
 150mm TOP SOIL

**SAFETY HEALTH AND ENVIRONMENTAL INFORMATION**  
 IN ADDITION TO THE HAZARD/RISKS NORMALLY ASSOCIATED WITH THE TYPES OF WORK DETAILED ON THIS DRAWING, NOTE THE FOLLOWING RISKS AND INFORMATION.  
 RISKS LISTED HERE ARE NOT EXHAUSTIVE. REFER TO DESIGN ASSESSMENT FORM.  
**CONSTRUCTION**  
 250mm Ø SCOTTISH WATER ASBESTOS CEMENT WATER MAIN ADJACENT TO NORTH EAST SITE BOUNDARY. INUNDATION OF CANAL WATER TO CONSTRUCTION SITE DUE TO CANAL LOCK FAILURE.  
**DEMOLITION**  
 NONE THAT COULD NOT BE FORESEEN BY A COMPETENT CONTRACTOR.  
 FOR INFORMATION RELATING TO USE, CLEANING AND MAINTENANCE SEE THE HEALTH AND SAFETY FILE.  
 IT IS ASSUMED THAT ALL WORKS WILL BE CARRIED OUT BY A COMPETENT CONTRACTOR WORKING, WHERE APPROPRIATE, TO AN APPROVED METHOD STATEMENT.



- Notes:**  
 1. DO NOT SCALE FROM THIS DRAWING.  
 2. ALL DIMENSIONS ARE IN METRES UNLESS SPECIFIED OTHERWISE.  
 3. REFER TO FAIRHURST DRAWING 149592/1200 FOR ROAD LAYOUT PLAN.  
 4. REFER TO FAIRHURST DRAWING 149592/1205 & 1206 FOR ROAD CONSTRUCTION DETAILS SHEET 1 & 2.  
 5. DEVELOPMENT LAYOUT BY HRI ARCHITECTS, BOUNDARY LINES SHOWN ON PLAN ARE INDICATIVE ONLY.

- LEGEND:**  
 - PHASE 1 BOUNDARY  
 - PHASE 2 BOUNDARY



Client:  
 Project Title:  
**NEW HOUSING TORVEAN NORTH**  
 Drawing Title:  
**CONSTRUCTION AREAS PLAN PHASE 1**

**FAIRHURST**  
 Elvie House,  
 Beechwood Business Park, INVERNESS, IV2 3BW  
 Tel: 01463 724 544 Fax: 0844 381 4412

Scale at A1:  
 1:500

Status:  
**FOR APPROVAL**

Drawn:  
 RMS

Checked:  
 JP

Approved:  
 DE

Date:  
 11/03/24

Date:  
 13/03/24

Date:  
 15/03/24

Drawing No.:  
 149592/1207

Revision:  
 -

Rev.	Date	Description	Drawn	Checked	Approved