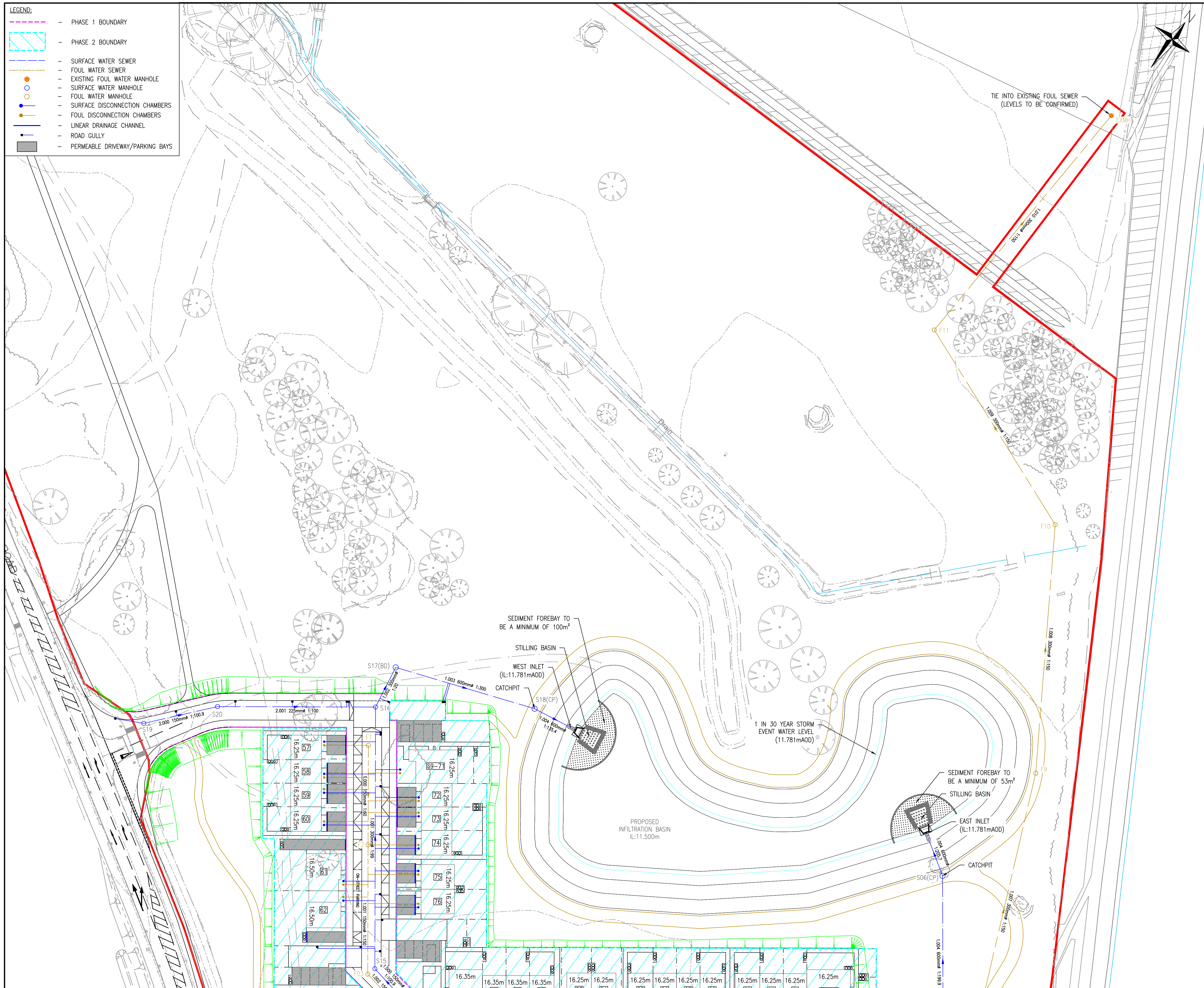


LEGEND:

- PHASE 1 BOUNDARY
- PHASE 2 BOUNDARY
- SURFACE WATER SEWER
- FOUL WATER SEWER
- EXISTING FOUL WATER MANHOLE
- SURFACE WATER MANHOLE
- FOUL WATER MANHOLE
- SURFACE DISCONNECTION CHAMBERS
- FOUL DISCONNECTION CHAMBERS
- LINEAR DRAINAGE CHANNEL
- ROAD GULLY
- PERMEABLE DRIVEWAY/PARKING BAYS



Do not scale from this drawing.

SAFETY HEALTH AND ENVIRONMENTAL INFORMATION

IN ADDITION TO THE HAZARD/RISKS NORMALLY ASSOCIATED WITH THE TYPES OF WORK DETAILED ON THIS DRAWING, NOTE THE FOLLOWING RISKS AND INFORMATION.

RISKS LISTED HERE ARE NOT EXHAUSTIVE. REFER TO DESIGN ASSESSMENT FORM NO.

CONSTRUCTION
250mm Ø SCOTTISH WATER ASBESTOS CEMENT WATER MAIN ADJACENT TO NORTH EAST SITE BOUNDARY. INUNDATION OF CANAL WATER TO CONSTRUCTION SITE DUE TO CANAL LOCK FAILURE.

DEMOLITION
NONE THAT COULD NOT BE FORESEEN BY A COMPETENT CONTRACTOR.

FOR INFORMATION RELATING TO USE, CLEANING AND MAINTENANCE SEE THE HEALTH AND SAFETY FILE

IT IS ASSUMED THAT ALL WORKS WILL BE CARRIED OUT BY A COMPETENT CONTRACTOR WORKING, WHERE APPROPRIATE, TO AN APPROVED METHOD STATEMENT.

NOTES:

1. DO NOT SCALE FROM THIS DRAWING
2. ALL DIMENSIONS ARE IN METRES UNLESS SPECIFIED OTHERWISE.
3. DEVELOPMENT LAYOUT PLAN BY HRI ARCHITECTS, BOUNDARY LINES SHOWN ON PLAN ARE INDICATIVE ONLY.
4. SEWERS AND MANHOLES TO BE LAID AND CONSTRUCTED IN ACCORDANCE WITH SEWERS FOR SCOTLAND 4TH EDITION.
5. THE CONTRACTOR SHALL CONTACT THE ENGINEER PRIOR TO WORK COMMENCING SHOULD THEY NOTE ANY DISCREPANCIES OR REQUIRE CLARIFICATION ON ANY ASPECT OF THE DESIGN.
6. CONCRETE SLAB PROTECTION WILL BE REQUIRED WHERE COVER TO THE CROWN OF THE PIPE IS LESS THAN 1.2m. IT SHALL SPAN THE PIPE TRENCH AND EXTEND A MINIMUM OF 150mm EITHER SIDE. THERE SHALL BE A MINIMUM OF 150mm OF SURROUND BETWEEN THE CROWN OF THE PIPE AND THE UNDERSIDE OF THE SLAB.
7. THE APPOINTED CIVIL ENGINEERING CONTRACTOR SHALL BE RESPONSIBLE FOR SETTING OUT THE WORKS AND FOR THE CORRECTNESS OF THE POSITION AND DIMENSIONS OF ALL PARTS OF THE WORKS.
8. THE CONTRACTOR SHALL TAKE ALL NECESSARY PRECAUTIONS TO AVOID CAUSING ANY DAMAGE TO OR INTERFERENCE WITH FLOW IN EXISTING PUBLIC SEWERS AND SHALL ENSURE THAT DEBRIS, SILT AND MUD DO NOT ENTER THE SEWER.
9. PROCESSED GRANULAR AND 'AS-DUG' BEDDING, SIDEFILL AND SURROUND MATERIALS FOR BURIED PIPELINES SHALL COMPLY WITH WIS 04-08-02.
10. STEPS FOR MANHOLES AND OTHER CHAMBERS SHALL BE TYPE D, CLASS 1, COMPLYING WITH THE REQUIREMENTS OF BS EN 13101. GALVANISED MILD STEEL AND PLASTIC ENCAPSULATED STEPS ARE PREFERRED.
11. CONNECTIONS FROM DISCONNECTING CHAMBERS TO SCOTTISH WATER SEWERS TO BE A MINIMUM OF 150mm DIAMETER.
12. INLAY COVERS TO BE USED WHERE MANHOLES ARE LOCATED WITHIN BLOCK PAVING AREAS.
13. SCOTTISH WATER TO VEST SUDS BASIN, SURFACE AND FOUL WATER SEWERS AND CHAMBERS. ONLY GULLIES AND TAILS IN ADOPTABLE ROAD TO BE ADOPTED BY THE HIGHLAND COUNCIL.
14. REFER TO FAIRHURST DRAWING 149592/2200 FOR DRAINAGE LAYOUT PLAN SHEET 1.
15. REFER TO FAIRHURST DRAWING 149592/2202 - 2204 & 2212 FOR DRAINAGE LONGITUDINAL SECTIONS.
16. REFER TO FAIRHURST DRAWING 149592/2205 FOR FOUL & SURFACE WATER MANHOLE SCHEDULE.
17. REFER TO FAIRHURST DRAWING 149592/2208 FOR DETAILED SECTION THROUGH INFILTRATION BASIN.

Rev.	Date	Description	Drwn.	Chkd.	Appd.

FAIRHURST

Elvie House
Beechwood Business Park
INVERNESS
HZ 3BW
Tel: 01463 724 544
Fax: 0844 381 4412

The Highland Council
Comhairle na Gàidhealtachd

Project Title:
NEW HOUSING TORVEAN NORTH

Drawing Title:
DRAINAGE LAYOUT PLAN SHEET 2 OF 2 PHASE 1

Scale of A1: 1:500	Status: For Approval
Drawn: RMS	Checked: JP
Date: 11/03/24	Date: 13/03/24
Drawn No.:	Approved: DE
	Date: 15/03/24
	Revision: 149592/2201 -