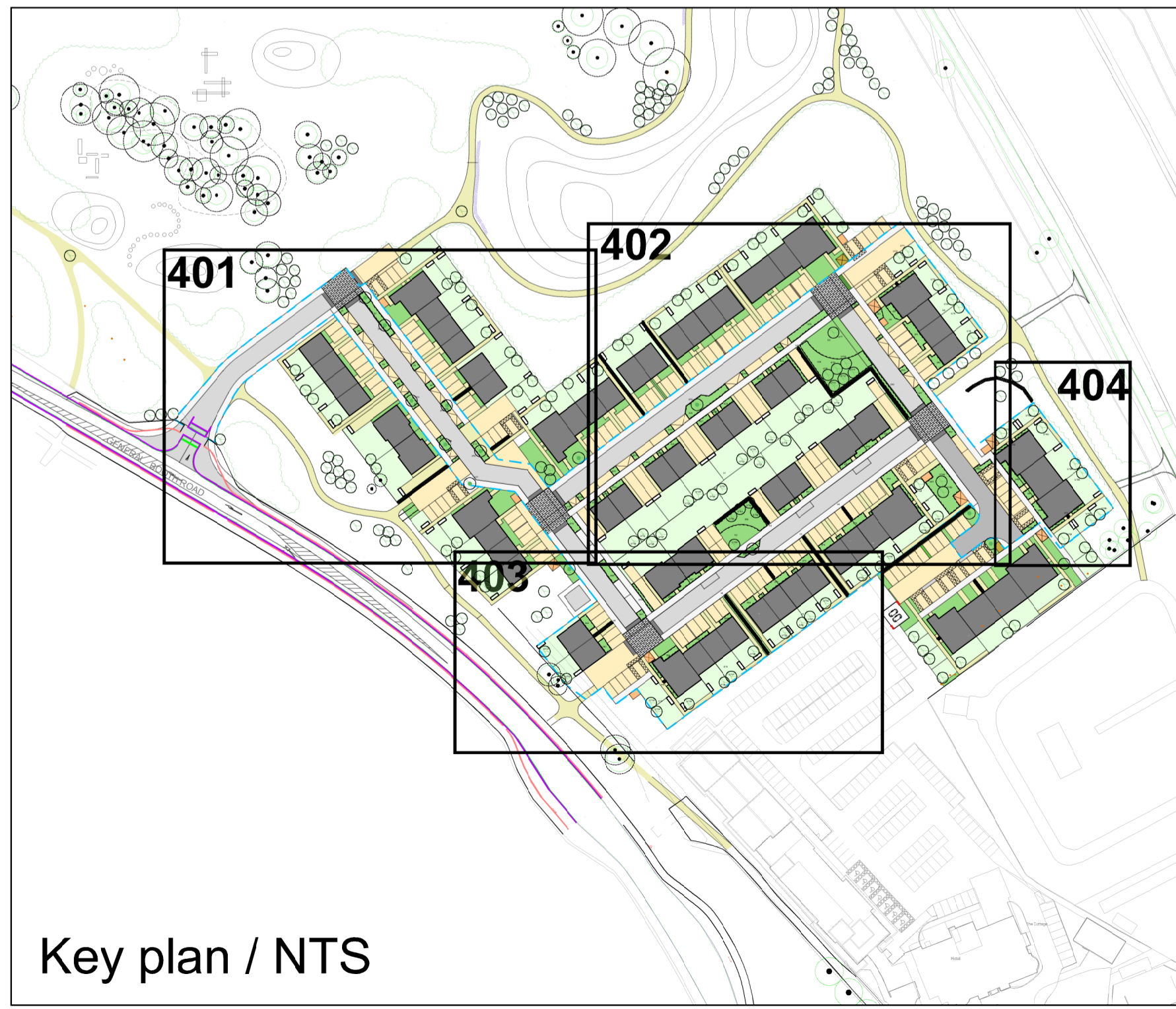
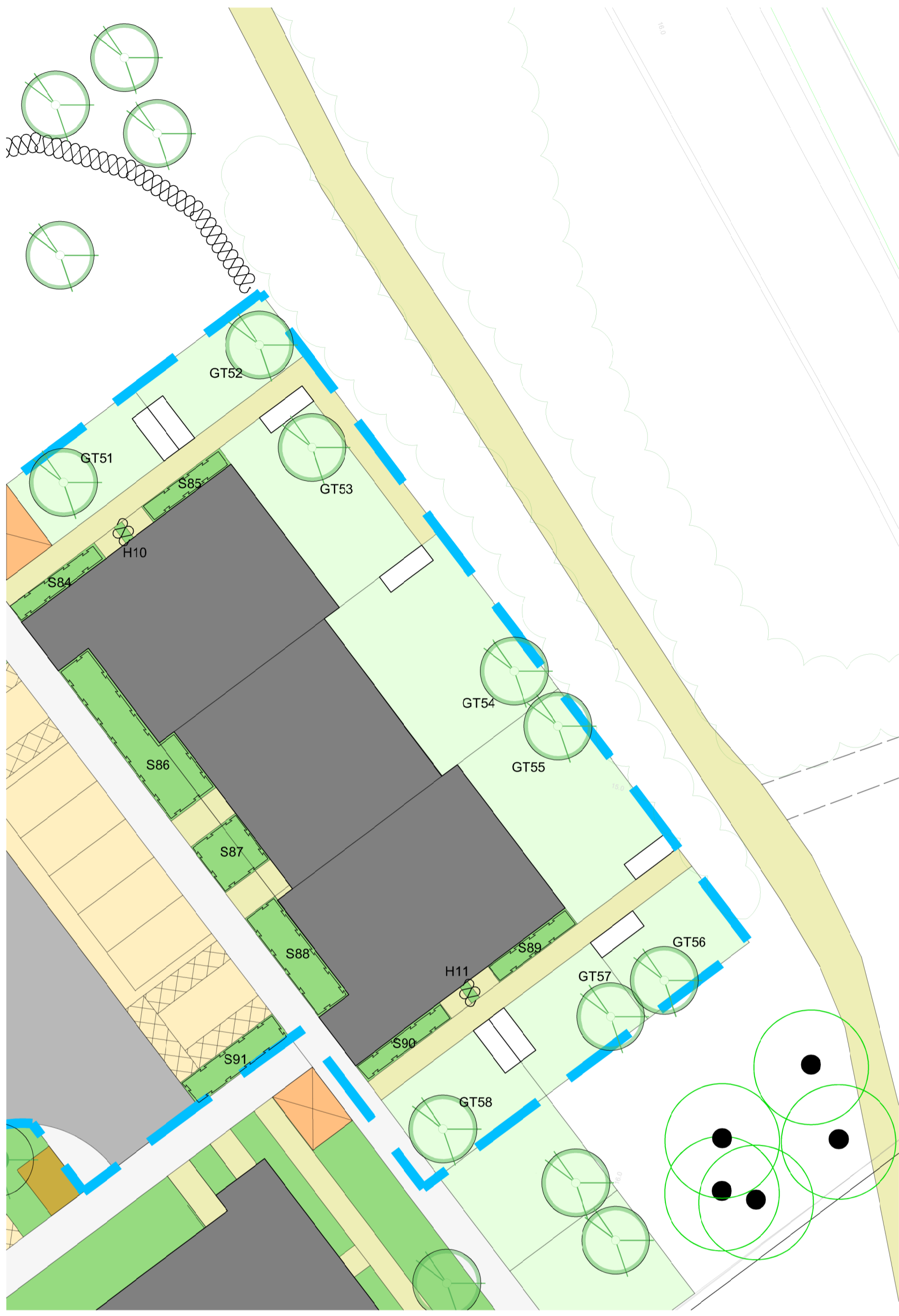


Continued on dwg 402



TORVEAN PLANTING SCHEDULES					
SHRUBS					
BED	TOTAL AREA	AREA (m2)	SPECIES	DENSITY	NUMBER
S1	5 m2	5	Elaeagnus 'Quicksilver'	3/m2	15
S2	6 m2	5	Euonymus europaeus	4/m2	20
S3	33 m2	11	Pinus mugo 'Moss'	3/m2	33
		11	Erica carnea 'Springwood White'	4/m2	44
		11	Erica x williamsii 'P.D. Williams'	4/m2	44
S4	5 m2	5	Rhododendron 'Elizabeth'	3/m2	15
S5	5 m2	5	Rosa Swany 'Melburenac'	3/m2	15
S6	5 m2	5	Lavandula 'Hidcote'	3/m2	15
S7	13 m2	8	Pinus pumila glauca 'Nana'	4/m2	32
		5	Erica tetralix 'Alba Mollis'	4/m2	20
S8	5 m2	5	Elaeagnus 'Quicksilver'	3/m2	15
S9	7 m2	7	Juniperus squamata 'Blue Star'	4/m2	28
S10	2 m2	2	Photinia 'Red Robin'	3/m2	6
S11	13 m2	8	Pinus sylvestris 'Albyn Prostrata'	3/m2	24
		5	Erica x williamsii 'P.D. Williams'	4/m2	20
S12	2 m2	2	Photinia 'Red Robin'	3/m2	6
S13	15 m2	10	Juniperus procumbens 'Nana'	3/m2	30
		5	Erica tetralix 'Alba Mollis'	4/m2	20
S14	12 m2	8	Pinus sylvestris 'Albyn Prostrata'	3/m2	24
		4	Erica x williamsii 'P.D. Williams'	4/m2	16
S15	4 m2	4	Rosa Swany 'Melburenac'	3/m2	12
S16	4 m2	4	Rhododendron 'Dora Amateis'	4/m2	16
S17	4 m2	4	Sarcococca hookeriana 'Digyna'	3/m2	12
S18	3 m2	3	Lavandula 'Hidcote'	3/m2	9
S19	8 m2	8	Euonymus europaeus	4/m2	32
S20	5 m2	5	Elaeagnus 'Quicksilver'	3/m2	15
S21	4 m2	4	Rosa Swany 'Melburenac'	3/m2	12
S22	6 m2	6	Sarcococca hookeriana 'Digyna'	3/m2	18
S23	3 m2	3	Lavandula 'Hidcote'	3/m2	9
S24	8 m2	8	Euonymus europaeus	4/m2	32
S25	5 m2	5	Rosa Swany 'Melburenac'	3/m2	15
S26	48 m2	12	Pinus mugo 'Moss'	3/m2	36
		12	Juniperus procumbens 'Nana'	3/m2	36
		12	Erica carnea 'Springwood White'	4/m2	48
		12	Erica x williamsii 'P.D. Williams'	4/m2	48
S27	8 m2	8	Sarcococca hookeriana 'Digyna'	3/m2	24
S28	3 m2	3	Viburnum 'Davidii'	3/m2	9
S29	8 m2	8	Euonymus europaeus	4/m2	32
S30	4 m2	4	Rhododendron 'Dora Amateis'	4/m2	16
S31	8 m2	8	Photinia 'Red Robin'	3/m2	24
S32	3 m2	3	Lavandula 'Hidcote'	3/m2	9
S33	18 m2	10	Rhododendron 'Elizabeth'	3/m2	30
		8	Viburnum 'Davidii'	3/m2	24
S34	5 m2	5	Rosa Swany 'Melburenac'	3/m2	15
S35	34 m2	12	Juniperus squamata 'Blue Star'	4/m2	48
		12	Viburnum 'Davidii'	3/m2	36
		10	Erica x williamsii 'P.D. Williams'	4/m2	40
S36	155 m2	30	Elaeagnus 'Quicksilver'	3/m2	90
		25	Photinia 'Red Robin'	3/m2	75
		25	Rhododendron 'Elizabeth'	3/m2	75
		25	Rosa Swany 'Melburenac'	3/m2	75
		25	Sarcococca hookeriana 'Digyna'	3/m2	75
		25	Viburnum 'Davidii'	3/m2	75
S37	2 m2	2	Rhododendron 'Dora Amateis'	4/m2	8
S38	5 m2	5	Lavandula 'Hidcote'	3/m2	15
S39	5 m2	5	Euonymus europaeus	4/m2	20
S40	6 m2	6	Photinia 'Red Robin'	3/m2	18
S41	11 m2	11	Rosa Swany 'Melburenac'	3/m2	33
S42	2 m2	2	Rhododendron 'Dora Amateis'	4/m2	8
S43	24 m2	8	Erica carnea 'Springwood White'	4/m2	32
		8	Pinus mugo 'Moss'	3/m2	24
		8	Viburnum 'Davidii'	3/m2	24
S44	5 m2	5	Rosa Swany 'Melburenac'	3/m2	15
S45	18 m2	18	Photinia 'Red Robin'	3/m2	54
S46	12 m2	12	Rhododendron 'Dora Amateis'	4/m2	48
S47	16 m2	10	Pinus mugo 'Moss'	3/m2	30
		6	Erica tetralix 'Alba Mollis'	4/m2	24
S48	6 m2	6	Rhododendron 'Dora Amateis'	4/m2	24
S49	15 m2	8	Erica carnea 'Springwood White'	4/m2	32
S50	6 m2	7	Pinus sylvestris 'Albyn Prostrata'	3/m2	21
S51	7 m2	7	Photinia 'Red Robin'	3/m2	21
S52	3 m2	3	Euonymus europaeus	4/m2	12
S53	7 m2	7	Lavandula 'Hidcote'	3/m2	21
S54	76 m2	20	Elaeagnus 'Quicksilver'	3/m2	60
		20	Photinia 'Red Robin'	3/m2	60
		20	Rhododendron 'Elizabeth'	3/m2	60
		18	Rosa Swany 'Melburenac'	3/m2	54
		18	Sarcococca hookeriana 'Digyna'	3/m2	54
S55	12 m2	8	Viburnum 'Davidii'	3/m2	24
		4	Pinus mugo 'Moss'	3/m2	12
S56	5 m2	5	Rhododendron 'Dora Amateis'	4/m2	20
S57	15 m2	8	Erica carnea 'Springwood White'	4/m2	32
		7	Pinus sylvestris 'Albyn Prostrata'	3/m2	21
S58	6 m2	6	Rhododendron 'Dora Amateis'	4/m2	24
S59	9 m2	9	Elaeagnus 'Quicksilver'	3/m2	27
S60	18 m2	6	Pinus mugo 'Moss'	3/m2	18
		6	Erica tetralix 'Alba Mollis'	4/m2	24
		6	Viburnum 'Davidii'	3/m2	18
S61	6 m2	6	Rosa Swany 'Melburenac'	3/m2	18
S62	12 m2	6	Photinia 'Red Robin'	3/m2	18
		6	Lavandula 'Hidcote'	3/m2	18
S63	10 m2	10	Rhododendron 'Elizabeth'	3/m2	30
S64	6 m2	6	Viburnum 'Davidii'	3/m2	18
S65	5 m2	5	Elaeagnus 'Quicksilver'	3/m2	15
S66	10 m2	10	Photinia 'Red Robin'	3/m2	30
S67	11 m2	11	Rosa Swany 'Melburenac'	3/m2	33
S68	6 m2	6	Euonymus europaeus	4/m2	24
S69	11 m2	11	Rhododendron 'Dora Amateis'	4/m2	44
S70	2 m2	2	Lavandula 'Hidcote'	3/m2	6
S71	18 m2	6	Pinus mugo 'Moss'	3/m2	18
		6	Erica x williamsii 'P.D. Williams'	4/m2	24
		6	Euonymus europaeus	4/m2	24
S72	2 m2	2	Lavandula 'Hidcote'	3/m2	6
S73	11 m2	11	Rhododendron 'Dora Amateis'	4/m2	44
S74	11 m2	11	Rhododendron 'Elizabeth'	3/m2	33
S75	2 m2	2	Lavandula 'Hidcote'	3/m2	6
S76	19 m2	11	Pinus mugo 'Moss'	3/m2	33
		8	Erica x williamsii 'P.D. Williams'	4/m2	32
S77	1 m2	1	Lavandula 'Hidcote'	3/m2	3
S78	19 m2	11	Rosa Swany 'Melburenac'	3/m2	33
		8	Sarcococca hookeriana 'Digyna'	3/m2	24
S79	6 m2	6	Euonymus europaeus	4/m2	24
S80	4 m2	4	Elaeagnus 'Quicksilver'	3/m2	12
S81	90 m2	25	Elaeagnus 'Quicksilver'	3/m2	75
		25	Photinia 'Red Robin'	3/m2	75
		25	Rhododendron 'Elizabeth'	3/m2	75
		15	Rosa Swany 'Melburenac'	3/m2	45
S82	8 m2	8	Juniperus procumbens 'Nana'	3/m2	24
S83	9 m2	9	Viburnum 'Davidii'	3/m2	27
S84	5 m2	5	Lavandula 'Hidcote'	3/m2	15
S85	4 m2	4	Elaeagnus 'Quicksilver'	3/m2	12
S86	20 m2	7	Pinus mugo 'Moss'	3/m2	21
		7	Erica x williamsii 'P.D. Williams'	4/m2	28
		6	Euonymus europaeus	4/m2	24
S87	8 m2	8	Rosa Swany 'Melburenac'	3/m2	24
S88	11 m2	11	Photinia 'Red Robin'	3/m2	33
S89	4 m2	4	Elaeagnus 'Quicksilver'	3/m2	12
S90	5 m2	5	Lavandula 'Hidcote'	3/m2	15
S91	8 m2	8	Rosa Swany 'Melburenac'	3/m2	24

STREET TREES		
CODE	SPECIES	
ST1	Acer campestre 'Streetwise'	
ST2	Acer campestre 'Streetwise'	
ST3	Pyrus calleryana 'Chanticleer'	
ST4	Acer campestre 'Streetwise'	
ST5	Pyrus calleryana 'Chanticleer'	
ST6	Acer campestre 'Streetwise'	
ST7	Pyrus calleryana 'Chanticleer'	

GARDEN TREES		
CODE	SPECIES	
GT1	Betula pendula	
GT2	Malus 'Evereste'	
GT3	Malus 'hupehensis'	
GT4	Prunus subhirtella 'Autumnalis Rosea'	
GT5	Sambucus nigra 'Guincho Purple'	
GT6	Sorbus aucuparia	
GT7	Sorbus intermedia	
GT8	Sorbus aucuparia	
GT9	Sorbus aucuparia	
GT10	Sorbus aucuparia	
GT11	Sorbus aucuparia	
GT12	Sorbus aucuparia	
GT13	Sorbus aucuparia	
GT14	Betula pendula	
GT15	Malus 'Evereste'	
GT16	Malus 'hupehensis'	
GT17	Prunus subhirtella 'Autumnalis Rosea'	
GT18	Sambucus nigra 'Guincho Purple'	
GT19	Sorbus aucuparia	
GT20	Sorbus intermedia	
GT21	Betula pendula	
GT22	Malus 'Evereste'	
GT23	Malus 'hupehensis'	
GT24	Prunus subhirtella 'Autumnalis Rosea'	
GT25	Sambucus nigra 'Guincho Purple'	
GT26	Sorbus aucuparia	
GT27	Sorbus intermedia	
GT28	Betula pendula	
GT29	Malus 'Evereste'	
GT30	Malus 'hupehensis'	
GT31	Prunus subhirtella 'Autumnalis Rosea'	
GT32	Prunus subhirtella 'Autumnalis Rosea'	
GT33	Sorbus intermedia	
GT34	Sorbus intermedia	
GT35	Betula pendula	
GT36	Malus 'Evereste'	
GT37	Malus 'hupehensis'	
GT38	Prunus subhirtella 'Autumnalis Rosea'	
GT39	Sambucus nigra 'Guincho Purple'	
GT40	Sorbus aucuparia	
GT41	Sorbus intermedia	
GT42	Betula pendula	
GT43	Malus 'Evereste'	
GT44	Malus 'hupehensis'	
GT45	Prunus subhirtella 'Autumnalis Rosea'	
GT46	Sambucus nigra 'Guincho Purple'	
GT47	Sorbus aucuparia	
GT48	Sorbus intermedia	
GT49	Malus 'Evereste'	
GT50	Malus 'Evereste'	
GT51	Betula pendula	
GT52	Malus 'Evereste'	
GT53	Malus 'hupehensis'	
GT54	Prunus subhirtella 'Autumnalis Rosea'	
GT55	Sambucus nigra 'Guincho Purple'	
GT56	Sorbus aucuparia	
GT57	Sorbus intermedia	
GT58	Betula pendula	

GRASS		
CODE	AREA	
G1	1673 m2	
G2	59 m2	
G3	139 m2	
G4	19 m2	
G5	71 m2	
G6	199 m2	
G7	74 m2	
G8	187 m2	
G9	172 m2	
G10	210 m2	
G11	111 m2	

HEDGES		
CODE	LENGTH	SPECIES
H1	1 m	Escallonia 'Donard Seeding'
H2	152 m	Fagus sylvatica
H3	74 m	Fagus sylvatica
H4	8 m	Escallonia 'Donard Seeding'
H5	1 m	Escallonia 'Donard Seeding'
H6	24 m	Fagus sylvatica
H7	5 m	Escallonia 'Donard Seeding'
H8	24 m	Fagus sylvatica
H9	5 m	Escallonia 'Donard Seeding'
H10	1 m	Escallonia 'Donard Seeding'

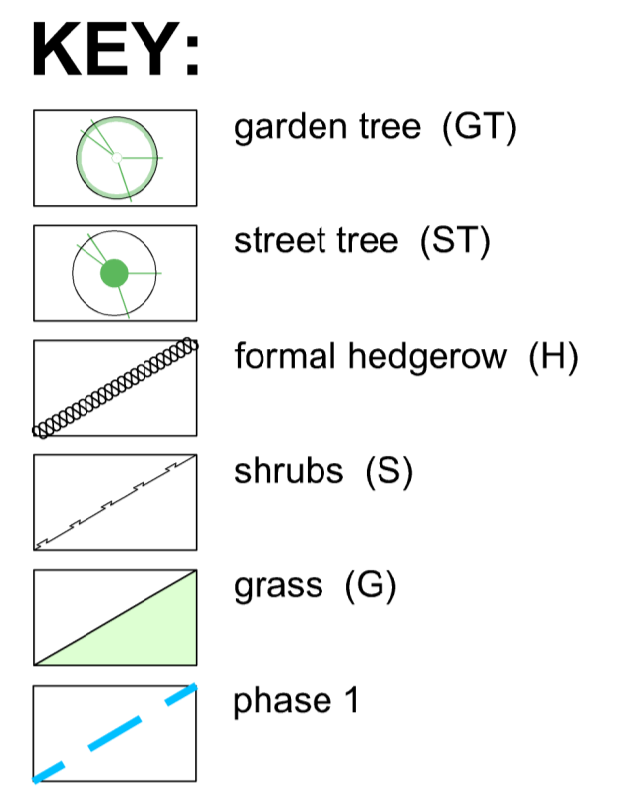
HEDGE			
CODE	SPECIES	LENGTH	
H1	Escallonia 'Donard Seeding'	21m	
H2	Fagus sylvatica	274m	

TREES			
CODE	SPECIES	NUMBER	
T1	Acer campestre 'Streetwise'	4	No
T2	Betula pendula	8	No
T3	Malus 'Evereste'	9	No
T4	Malus 'hupehensis'	7	No
T5	Prunus subhirtella 'Autumnalis Rosea'	8	No
T6	Pyrus calleryana 'Chanticleer'	3	No
T7	Sambucus nigra 'Guincho Purple'	6	No
T8	Sorbus aucuparia	12	No
T9	Sorbus intermedia	8	No

SHRUBS			
CODE	SPECIES	NUMBER	
S1	Elaeagnus 'Quicksilver'	348	No
S2	Erica carnea 'Springwood White'	188	No
S3	Erica tetralix 'Alba Mollis'	88	No
S4	Erica x williamsii 'P.D. Williams'	252	No
S5	Juniperus procumbens 'Nana'	60	No
S6	Juniperus squamata 'Blue Star'	76	No
S7	Juniperus procumbens 'Nana'	147	No
S8	Photinia 'Red Robin'	420	No
S9	Pinus mugo 'Mops'	225	No
S10	Pinus pumila glauca 'Nana'	32	No
S11	Pinus sylvestris 'Albyn Prostrata'	60	No
S12	Rhododendron 'Dora Amateis'	276	No
S13	Rhododendron 'Elizabeth'	318	No
S14	Rosa Swany 'Melburenac'	423	No
S15	Sarcococca hookeriana 'Digyna'	225	No
S16	Viburnum 'Davidii'	255	No

GRASS		
CODE	AREA	
G1	2914 m2	

NOTES
For planting specification refer to the latest revision of Torvean North Landscape Plan 235 / 104



REV	ISSUE NOTE	DATE	INTS

CLIENT:	The Highland Council
JOB TITLE:	Torvean North
STAGE:	Planning
DRAWING TITLE:	Phase 1 Planting Plan 4 of 4
SCALE:	1:200@A1
DRG NO:	235 / 404
REV:	
DRAWN:	JON
CHECKED:	LSS
DATE:	11/01/24