

Number	Plant Name	Height	Girth	Specification
25	Acer campestre 'Streetwise'	400-450cm	16-18cm	Extra Heavy Standard: C. Clear Stem min. 200cm
20	Prunus avium	400-450cm	14-16cm	Extra Heavy Standard: 5 brks. C. Clear Stem 175-200cm
16	Malus 'Evereste'	400-450cm	14-16cm	Extra Heavy Standard: 5 brks. C. Clear Stem 175-200cm
12	Betula pendula	400-450cm	14-16cm	Extra Heavy Standard: 5 brks. C. Clear Stem 175-200cm
14	Malus 'Evereste'	400-450cm	14-16cm	Extra Heavy Standard: 5 brks. C. Clear Stem 175-200cm

Number	Plant Name	Height	Container	Specification	Density
537	Carpinus betulus	80-100cm	5L	1+1: Transplant - seed raised: Branched: 5 brks: C	3/m ²

Number	Plant Name	Height	Container	Specification	Density
2	Aucuba japonica 'Rozannie'	30-40cm	10L	Bushy: 4 brks: C	Counted
117	Aucuba japonica 'Rozannie'	30-40cm	10L	Bushy: 4 brks: C	3/m ²
8	Ceanothus thyrsiflorus repens	30-40cm	10L	Bushy: 5 brks: C	Counted
18	Ceanothus thyrsiflorus repens	30-40cm	10L	Bushy: 5 brks: C	3/m ²
97	Cistus x corbariensis	40-60cm	10L	Bushy: 6 brks: C	3/m ²
13	Cornus mas	60-80cm	10L	Bushy: 7 brks: C	Counted
10	Cornus sanguinea 'Midwinter Fire'	60-80cm	10L	Branched: 4 brks: C	Counted
68	Cornus sanguinea 'Midwinter Fire'	60-80cm	10L	Branched: 4 brks: C	3/m ²
11	Corylus avellana	60-80cm	10L	Bushy: 7 brks: C	Counted
9	Euonymus fortunei 'Emerald Gaiety'	25-30cm	10L	Bushy: 9 brks: C	3/m ²
6	Hebe rakaiensis	30-40cm	10L	Bushy: 7 brks: C	3/m ²
8	Hex aquifolium 'J.C. van Tol'	80-100cm	10L	Caned: Leader with Laterals: C	Counted
65	Osmanthus x burkwoodii	40-60cm	10L	Bushy: 5 brks: C	3/m ²
40	Pachysandra terminalis 'Green Carpet'	10-20cm	5L	Several Shoots: 11 brks: C	5/m ²
60	Sarcococca hookeriana digyna	30-40cm	10L	Bushy: 6 brks: C	3/m ²
6	Skimmia japonica 'Kew White'	40-60cm	10L	Bushy: 5 brks: C	Counted
88	Skimmia japonica 'Kew White'	40-60cm	10L	Bushy: 5 brks: C	3/m ²
5	Viburnum davidii	30-40cm	10L	Bushy: 5 brks: C	3/m ²

Number	Plant Name	Container	Specification	Density
49	Anemone x hybrida 'Honorine Jobert'	3L	Full Pot: C	5/m ²
13	Epimedium x youngianum 'Roseum'	2L	Full Pot: C	5/m ²
47	Geranium Rozanne	3L	Full Pot: C	5/m ²

Number	Plant Name	Container	Specification	Density
7	Carex comans 'Frosted Curtis'	5L	Full Pot: C	3/m ²
66	Carex morrowii 'Ice Dance'	5L	Full Pot: C	5/m ²

Number	Species	Height	Specification	Percentage Contribution	Density
389	Acer campestre	100-125cm	1+2: Transplant - seed raised: B	15%	0.4Cr Triple Staggered at 0.67m offset
250	Cornus sanguinea	40-60cm	1+1: Transplant - seed raised: Branched: 2 brks: B	10%	0.4Cr Triple Staggered at 0.67m offset
389	Cornus avellana	90-120cm	Branched: 3 brks: B	15%	0.4Cr Triple Staggered at 0.67m offset
519	Crataegus monogyna	80-100cm	1+2: Transplant - seed raised: B	20%	0.4Cr Triple Staggered at 0.67m offset
260	Ilex aquifolium	40-60cm	Transplant - seed raised: 1+2: B	10%	0.4Cr Triple Staggered at 0.67m offset
260	Prunus spinosa	80-100cm	1+2: Transplant - seed raised: Branched: 3 brks: B	10%	0.4Cr Triple Staggered at 0.67m offset
132	Rosa canina	60-80cm	1+1: Transplant - seed raised: Branched: 3 brks: B	5%	0.4Cr Triple Staggered at 0.67m offset
389	Viburnum opulus	60-80cm	1+2: Transplant - seed raised: Branched: 3 brks: B	15%	0.4Cr Triple Staggered at 0.67m offset

Emorsgate EM3 Special General Purpose Meadow Mixture

%	Name
0.5	Achillea millefolium
0.6	Betonica officinalis (Stachys officinalis)
2.5	Centaurea nigra
0.8	Centaurea scabiosa
1	Daucus carota
0.6	Filipendula ulmaria
2	Galium album (Galium mollugo)
0.4	Galium verum
0.4	Knautia arvensis
0.3	Leontodon hispidus
0.6	Leucanthemum vulgare
0.5	Lotus corniculatus
0.1	Origanum vulgare
0.5	Plantago media
1	Poterium sanguisorba (Sanguisorba minor)
0.4	Primula veris
2	Prunella vulgaris
2.5	Ranunculus acris
1	Rhinanthus minor
0.6	Rumex acetosa
1.2	Silene dioica
0.2	Silene flos-cuculi (Lychnis flos-cuculi)
0.1	Trifolium pratense
20	

%	Name
8	Agrostis capillaris
40	Cynosurus cristatus
28	Festuca rubra
4	Phleum bertolonii
80	

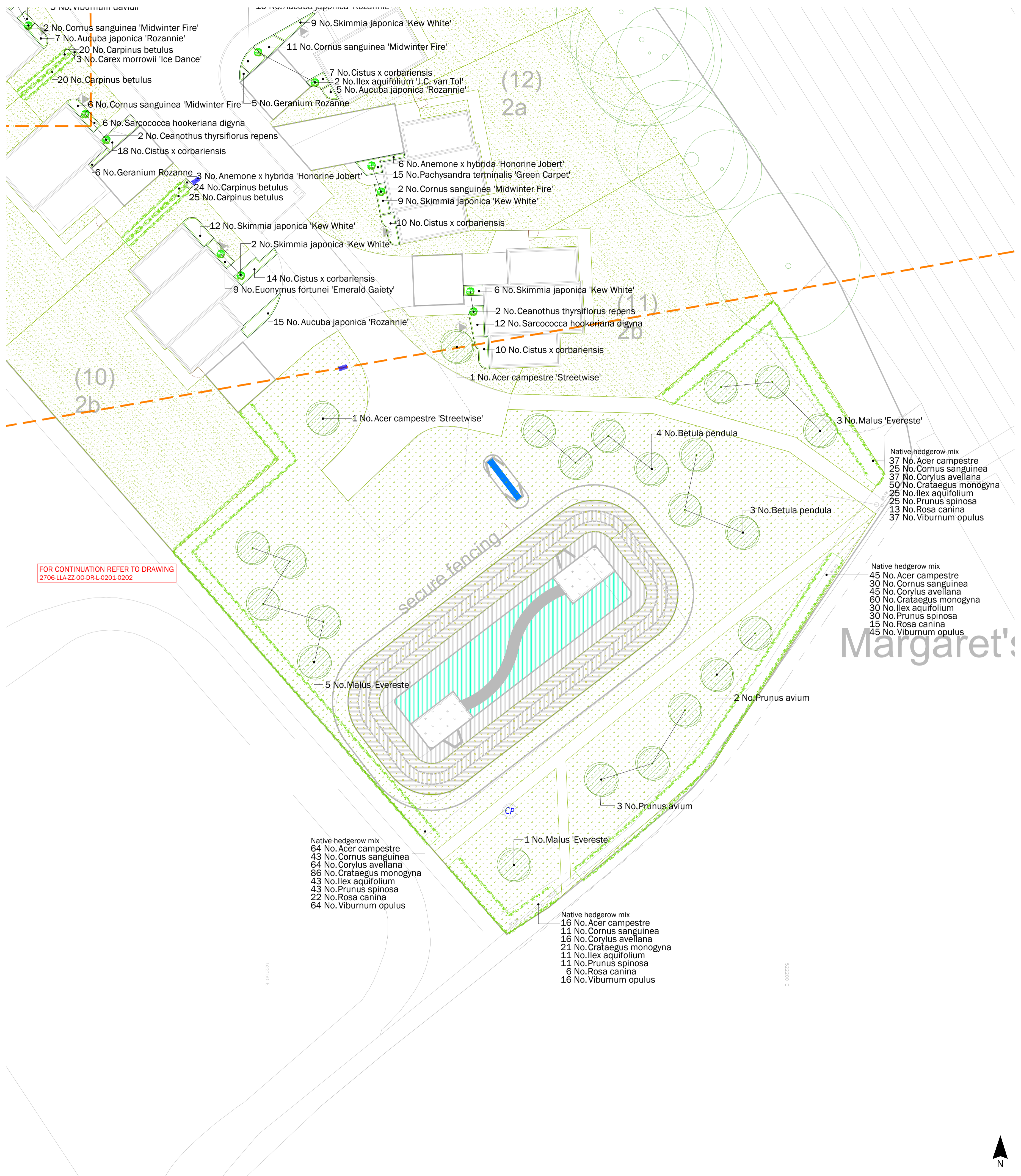
kg/ha	kg/acre	g/m ²
40	16	4

Emorsgate EM8 Meadow Mixture for Wetlands

%	Name
0.5	Achillea millefolium
0.2	Achillea ptarmica
1	Betonica officinalis (Stachys officinalis)
2.5	Centaurea nigra
2	Filipendula ulmaria
1.5	Galium verum
0.4	Geum rivale
0.6	Leucanthemum vulgare
0.8	Lotus pendunculatus
1	Plantago lanceolata
0.2	Primula veris
1.5	Prunella vulgaris
2.5	Ranunculus acris
1.5	Rhinanthus minor
1.5	Rumex acetosa
1	Sanguisorba officinalis
0.2	Silene flos-cuculi (Lychnis flos-cuculi)
0.6	Succisa pratensis
0.5	Vicia cracca
20	

%	Name
10	Agrostis capillaris
2	Alopecurus pratensis
2	Anthoxanthum odoratum
1	Briza media
32	Cynosurus cristatus
1	Deschampsia cespitosa
24	Festuca rubra
1	Hordeum secalinum
7	Schedonorus praensis (Festuca pratensis)
80	

kg/ha	kg/acre	g/m ²
40	16	4



FOR CONTINUATION REFER TO DRAWING 2706-LLA-ZZ-00-DR-L-0201-0202

Symbol	Description
[Red line]	Boundary line
[Orange dashed line]	Page Salts
[Green circle]	Existing vegetation to be retained
[Green circle with dot]	Proposed tree
[Green line]	Proposed hedging
[Green square]	Proposed specimen
[Green rectangle]	Proposed ornamental planting
[Green hatched area]	Proposed amenity grass
[Green hatched area]	Proposed wildflower meadow
[Green hatched area]	Proposed wildflower wet meadow
[Purple dashed line]	Proposed root barrier

All dimensions in millimetres
 This drawing is to be used for planting information only
 Any species substitution must be verified with the project Landscape Architect
 This layout must be checked in accordance with NHBC Standards 2020 Chapter 4.2, Building Near Trees, and Chapter 10.2 - Drives, Paths and Landscaping by the project engineer prior to implementation
 Excavations: Contractors must ensure they have full information relating to service and drainage positions before undertaking any excavations
 Root barriers to be used in association with tree planting adjacent to kerbs, services, highways etc.
 All irrigation by specialists
 For CDM information refer to Designers Risk Assessment

FOR OTHER LANDSCAPE DRAWINGS REFER TO THE FOLLOWING:
 DRAWING TYPE:
 - Detailed Hard Landscape Proposals 2706-LLA-ZZ-00-DR-L-0100 series
 - Landscape Specification and Details 2706-LLA-ZZ-00-DR-L-0301



Scale in metres
 0 1 2 5 10m

Rev	Date	Description	Drn
P02	15.04.24	Amended to the Suitability to Planning	KYZ
P01	14.06.23	First Issue	IM

Title: Detailed Planting Proposals
 Project: Courtlands, Todds Green, Stevenage
 Client: Hertford Planning Service
 Date: May 2023
 Scale: 1:200@A1
 Drawing No: 2706-LLA-ZZ-00-DR-L-0203
 Revision: P02
 Suitability: Planning
 Project No: 2706
 T: +44 (0)1279 847044 E: office@lizlake.com www.lizlake.com
 COPYRIGHT Liz Lake Associates
 Information contained in this drawing is confidential and may not be used for any purpose other than that intended without the prior written authority of Liz Lake Associates.
 This drawing is copyright and may not be copied except within the agreed conditions of supply.
 BGL: MAPPNG
 Reproduced from Ordnance Survey map data by permission of Ordnance Survey © Crown copyright 2023, Licence No. 100001236
 Ordnance Survey Licence No. 1520013478
 This drawing contains information which is missing from a number of sources and its accuracy should be verified on site.
LIZ LAKE ASSOCIATES
 LANDSCAPE ARCHITECTS