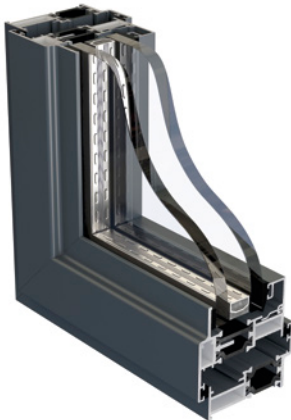


Product Specification

Wide range of high quality, thermally-broken window options.



Alitherm Heritage Window

Alitherm Heritage provides the ideal solution for heritage applications such as listed building renovations and large scale replica-refurbishment projects where planning constraints are to be considered.

The Alitherm Heritage window is designed to be built as a series of horizontal modules which can be stacked using horizontal couplers to form a multi-part window featuring a specially design drip bar between modules.

Application

- ◆ Fixed windows
- ◆ Single or double sash, side hung open out casements
- ◆ Top hung open out casements
- ◆ Tilt & turn windows
- ◆ Pivot windows

Features

- ◆ Polyamide thermal break provides enhanced thermal performance
- ◆ Designed as a direct replacement for steel windows

Finish

Single or dual colour, marine quality polyester powder coat as standard

Technical Performance

| | |
|------------|---|
| WER Rating | B |
| U Value | 1.5 W/m ² K (using sealed unit 1.0 W/m ² K) |
| Air | Class 4, 600Pa |
| Water | Class 9A, 600Pa |
| Wind | Class AE, 2400Pa |

Document L Compliant

Dimensions

| | |
|-------------|-------------------------|
| Frame Depth | 47mm |
| Glass | 24mm, 28mm, 32mm & 36mm |

Test Certification

| | |
|----------------|-------------------------------|
| BS 6375 Part 1 | 2009 Resistance to Weather |
| PAS 24:2016 | Enhanced Security Performance |

Recommended Design Limits

| | |
|-------------------------------|--------|
| Side Hung Vent Max o/a Width | 700mm |
| Side Hung Vent Min o/a Width | 300mm |
| Side Hung Vent Max o/a Height | 1400mm |
| Maximum Vent Weight | 40kg |
| Top Hung Vent Max o/a Width | 1400mm |
| Top Hung Vent Max o/a Height | 1300mm |
| Top Hung Vent Min o/a Height | 275mm |
| Maximum Vent Weight | 40kg |

