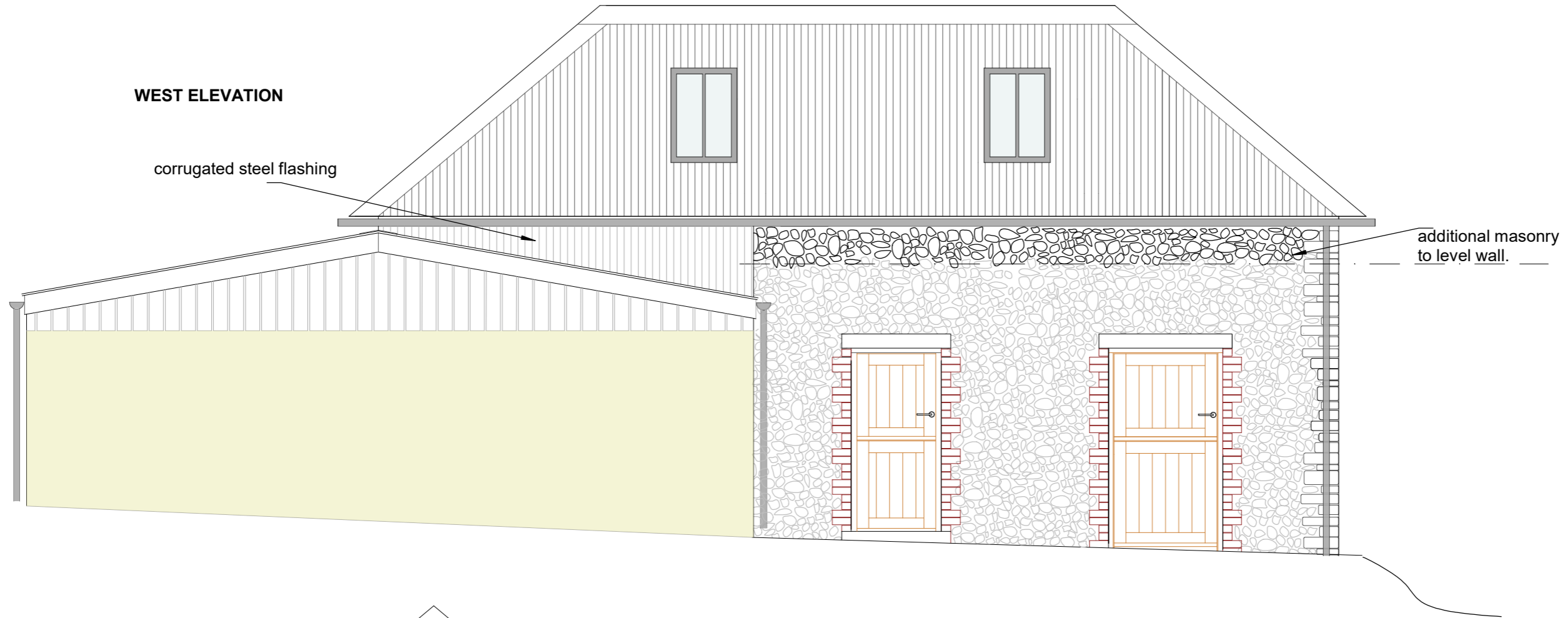
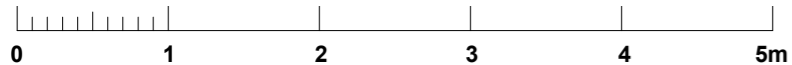
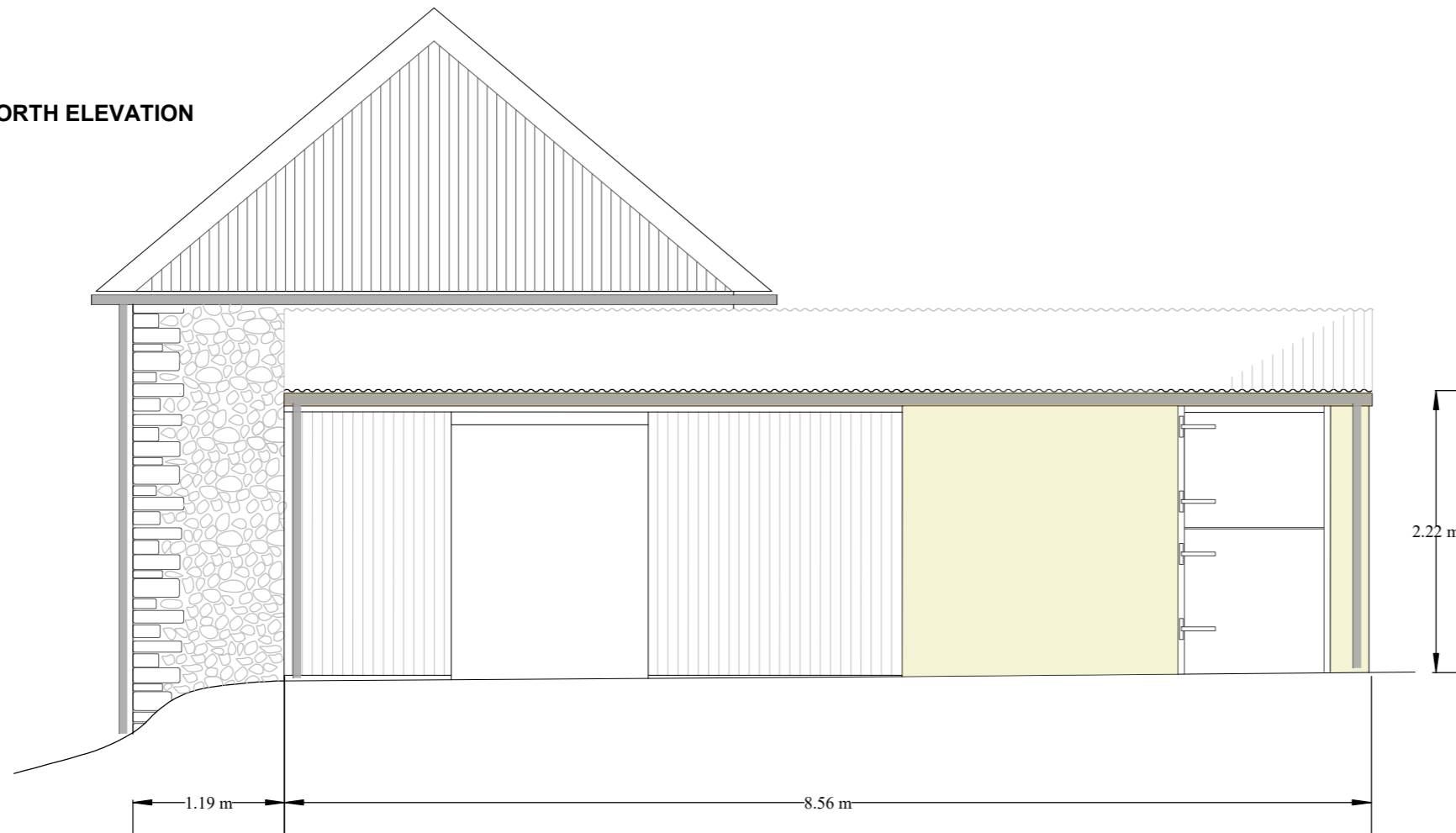


WEST ELEVATION



NORTH ELEVATION



Works summary.

STONE BUILDING.

Remove existing mono pitch roof structure, create a level wall line with additional masonry to south, west and north elevations.

Create a new hipped roof with traditional truss construction.

Roof covering to be 13/3 profile corrugated steel and flat steel copings finished in black to match adjacent building. To include 2 x fixed heritage style rooflights.

Rainwater goods are galvanised metal discharging to ground.

Existing external and internal masonry made good, removing failed and cement mortars and repointed with an hydraulic lime based mortar.

Concrete block infill below windows removed, new softwood, painted single glazed window fitted into new opening, concrete block infill above window replaced with stone to match original.

Remove later concrete block stalls and floor. Create internal french drain and relay concrete floor over waterproof membrane.

RENDERED EXTENSION.

Alter roof from a mono pitch cement fibre to a gable corrugated steel.

Alter blockwork to suit gable roof. Partially timber clad new gable end.

Existing window frames to be retained.

New softwood doors.

TIMBER STORE.

Rebuild with new timber frame and cladding to create a continuous roof with adjacent extension.

GROUND WORKS.

Relay existing concrete apron to ensure fall is away from the buildings.