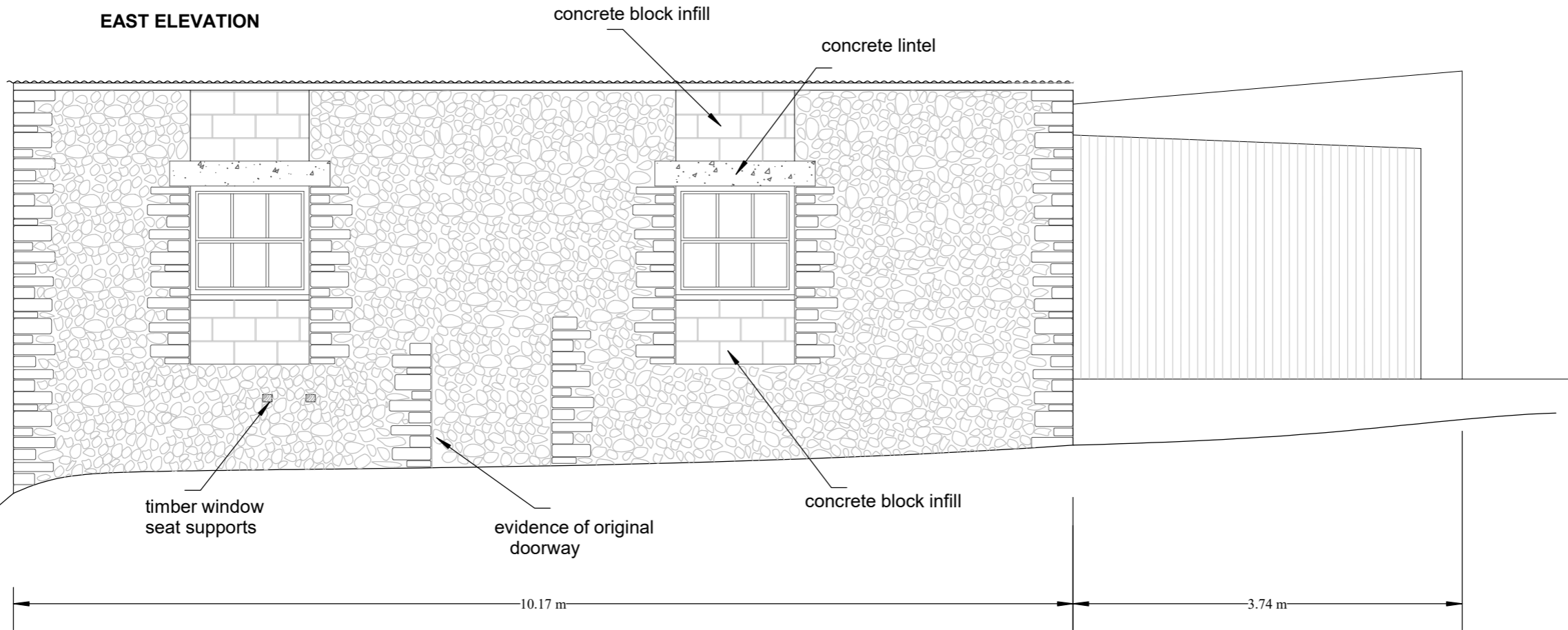
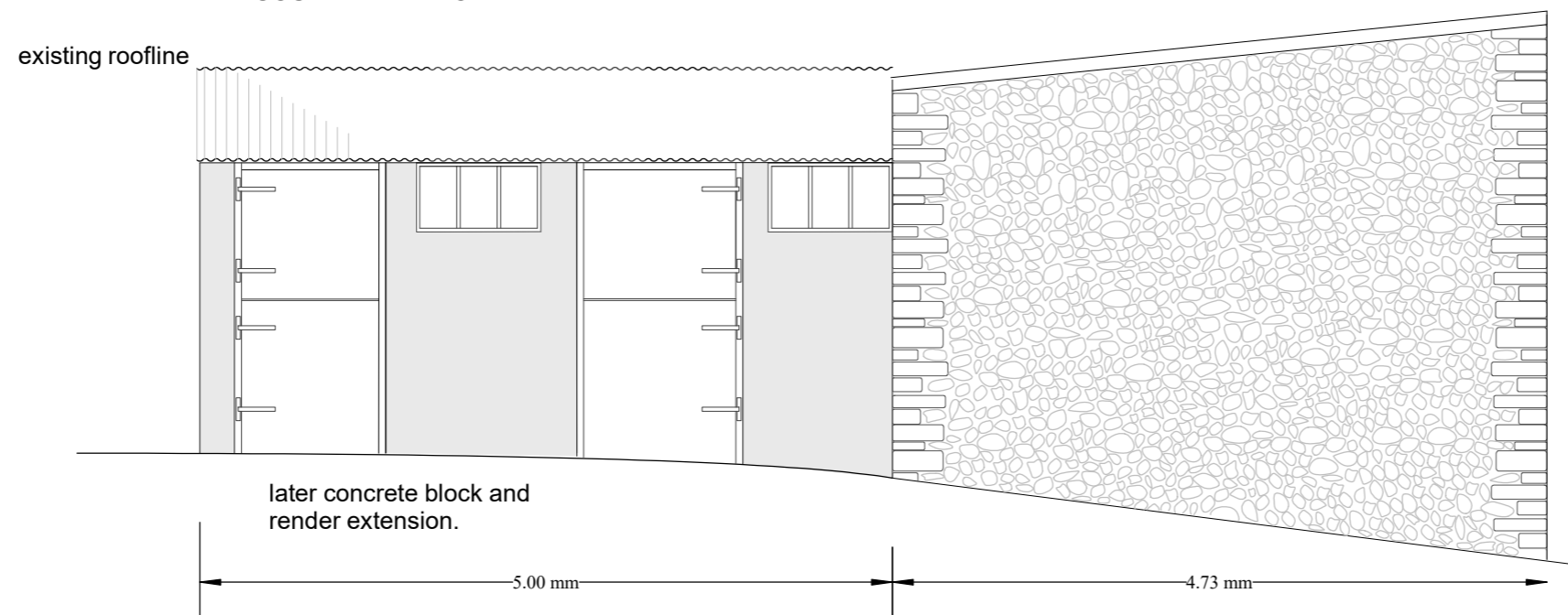


EAST ELEVATION



SOUTH ELEVATION



STONE BUILDING

Evidence suggests originally built as residential dwelling. see Heritage Statement.

Solid masonry construction semi dressed inferior lias and sandstone quoins to corners and openings, with flint/chert rubble infill.

The wall to the west elevation appears to have undergone substantial alteration and is now in need of repair.

Original roofing likely to have been hipped and thatched. Later alteration to wall heights to accommodate a mono, shallow pitch corrugated metal roof (now failed).

Rainwater goods are cement fibre discharging to ground.

All the original window openings have been altered. Those to the east elevation have been infilled with concrete block and a single metal casement window in a painted wooden frame. Those to the west elevation have been opened up and converted into doorways.

Floor is sloped concrete slab with drainage channel.

RENDERED EXTENSION.

Concrete block construction with painted cement render to the outside.

Cement fibre corrugated roofing sheets on softwood timbers (now failed).

Metal framed casement windows and flat panel ply stable doors.

Floor is concrete slab.

TIMBER STORE.

Corrugated metal clad timber framed wall and roof.

