

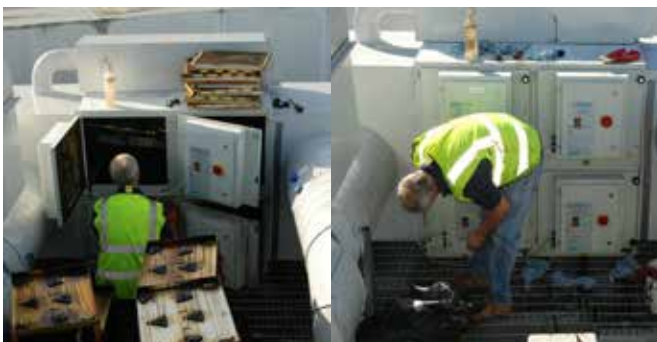
# Servicing & Maintenance

*At Purified Air we pride ourselves on our excellent levels of customer service and maintenance.*



## Nationwide Coverage

We have hubs in both Manchester and London and can offer nationwide coverage with our teams of directly employed service engineers.



For all Service & Maintenance enquiries please contact us via:

✉ [service@purifiedair.com](mailto:service@purifiedair.com)

☎ 0800 018 4000

## Service & Maintenance Contracts

With every installation we offer the opportunity to sign up for one of our service and maintenance contracts, these are structured to suit individual needs, on a post pay basis with the customer only being invoiced after each service, saving them both time and money against ad hoc servicing requests.

## Dependability

So whether you have our commercial kitchen exhaust filtration equipment in your restaurant, café or take away, you can rest assured that we will always be there when you need us.

## 5 MAINTENANCE

If you observe the necessary caution and carry out the simple maintenance and cleaning described below at regular intervals, then any problems will mostly be detected and corrected before they result in a total breakdown of the product. The indicated maintenance intervals can vary depending on the specific working and local conditions. It is therefore recommended that the product is thoroughly inspected annually in addition to the indicated periodic maintenance. Please contact your supplier for this purpose.

### WARNING

Overdue maintenance can cause fire.

### WARNING

Always switch OFF the machine and remove the mains plug from the wall socket before carrying out the activities below. First read the maintenance regulations at the beginning of this manual.

### 5.1 Periodic maintenance

The maintenance activities in the table below indicated by [1] can be carried out by the user; other activities are strictly reserved for qualified personnel.

Action	Every 1 week to 4 months (depending on the degree of pollution)	Every 6 months	Every 12 months
Clean the outside of the product with mild detergent		X [1]	
Check the door sealing material			X[1]
Clean the inside of the product and remove dust/grease from the filter compartment	X[1]		
Clean the prefilter, ioniser, collector and the final filter and check for damages	X[1]		

### 5.2 Cleaning the pre filter, ionizer/collector and the after filter

Clean or replace the filters:

- when damaged
- when the ioniser and/or collector starts to make a crackling sound
- when the extraction capacity becomes inadequate

It is a matter of experience to determine when the product needs to be cleaned, since the nature and the degree of pollution depend strongly on the particular situation, humidity, intensity of use, etc. Nevertheless, the filters should be cleaned regularly (every 1 weeks up to 4 months).

#### **WARNING**

Polluted filters often contain dust and dirt particles that could be a health hazard when inhaled. When replacing the filter, always wear a reliable and approved facemask.

##### *5.2.1 Removing the filters*

- Loosen the star knobs and open the door.
- Remove the pre filter, ionizer/collector and the after filter (in this sequence).

##### *5.2.2 Cleaning the pre- and after filters*

- Clean the pre- and after filters in hot water (approx. 60°C) to which a detergent. This treatment can be repeated several times. Cleaning with a high pressure spraying pistol is also possible..
- If the pollution consists of dry dust particles, than the filters can also be cleaned with compressed air (operating pressure 500-600Pa).
- Allow for complete drying after cleaning.

##### *5.2.3 Cleaning of the ioniser/collector*

- Clean the ioniser and collector in hot water (approx. 60°C) to which a 2% EFC solution has been added. Cleaning using a high-pressure spraying pistol is also possible.
- Check during washing the ioniser for broken ionisation wires. These broken wires can simply be replaced.
- Check during washing the collector for bent lamellas. These can be straightened, carefully, with a screwdriver. Lamellas in contact with each other can cause short-circuiting.
- Allow for complete drying after cleaning.

##### *5.2.4 Mounting the filters*

- Mount the filters, removed earlier, in reverse order.

Note the correct position of the ioniser/collector. For this purpose, filters have arrows indicating the direction of the airflow. Pay due attention to the position of the contact pin and contact spring.

**purified**  **air**<sup>®</sup>  
providing a better environment

Purified Air Limited, Lyon House,  
Lyon Road, Romford, Essex RM1 2BG England  
Tel: 01708 755414 Fax: 01708 721488  
E-mail: [enq@purifiedair.co.uk](mailto:enq@purifiedair.co.uk)  
[www.purifiedair.co.uk](http://www.purifiedair.co.uk)