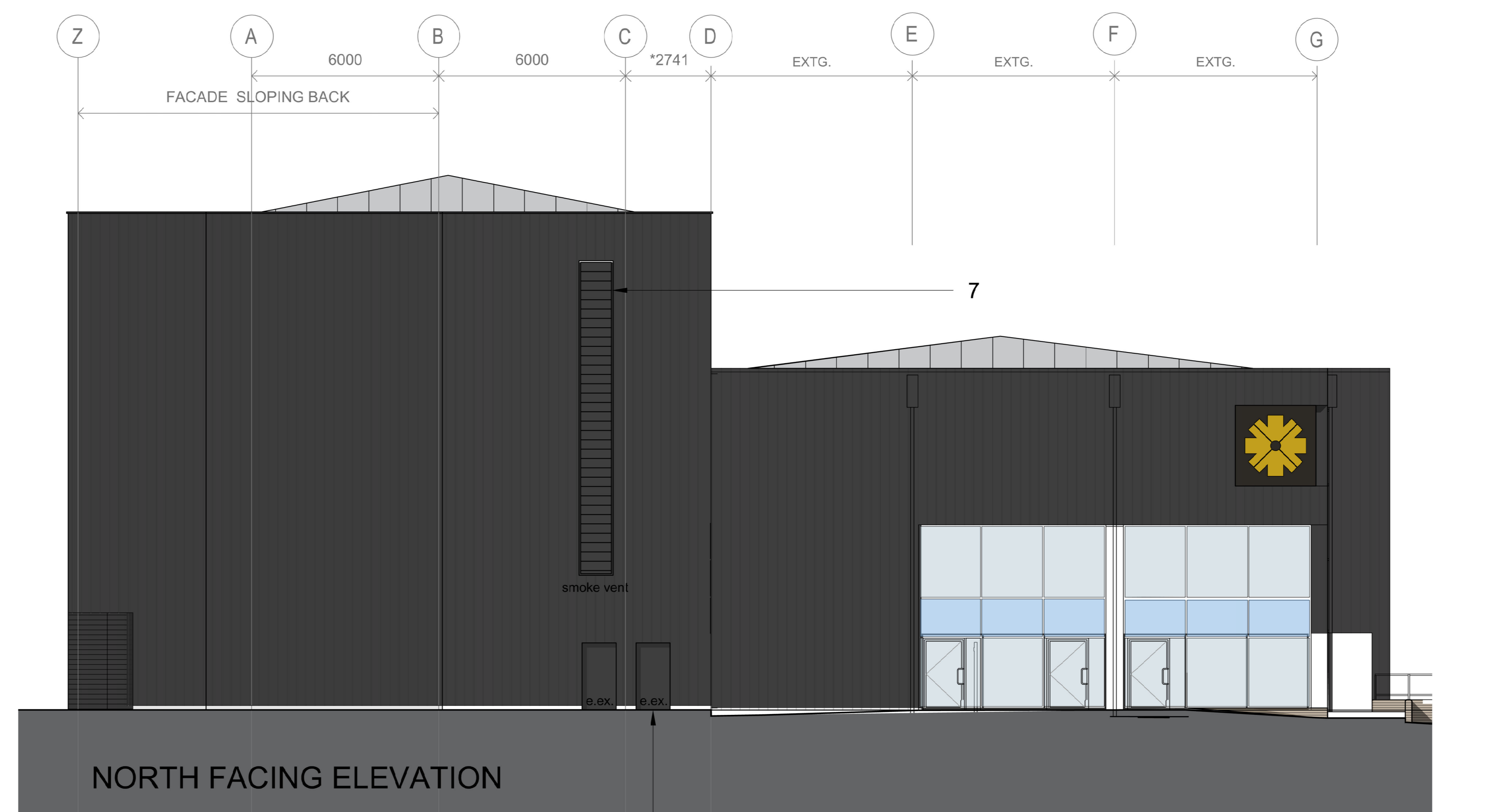
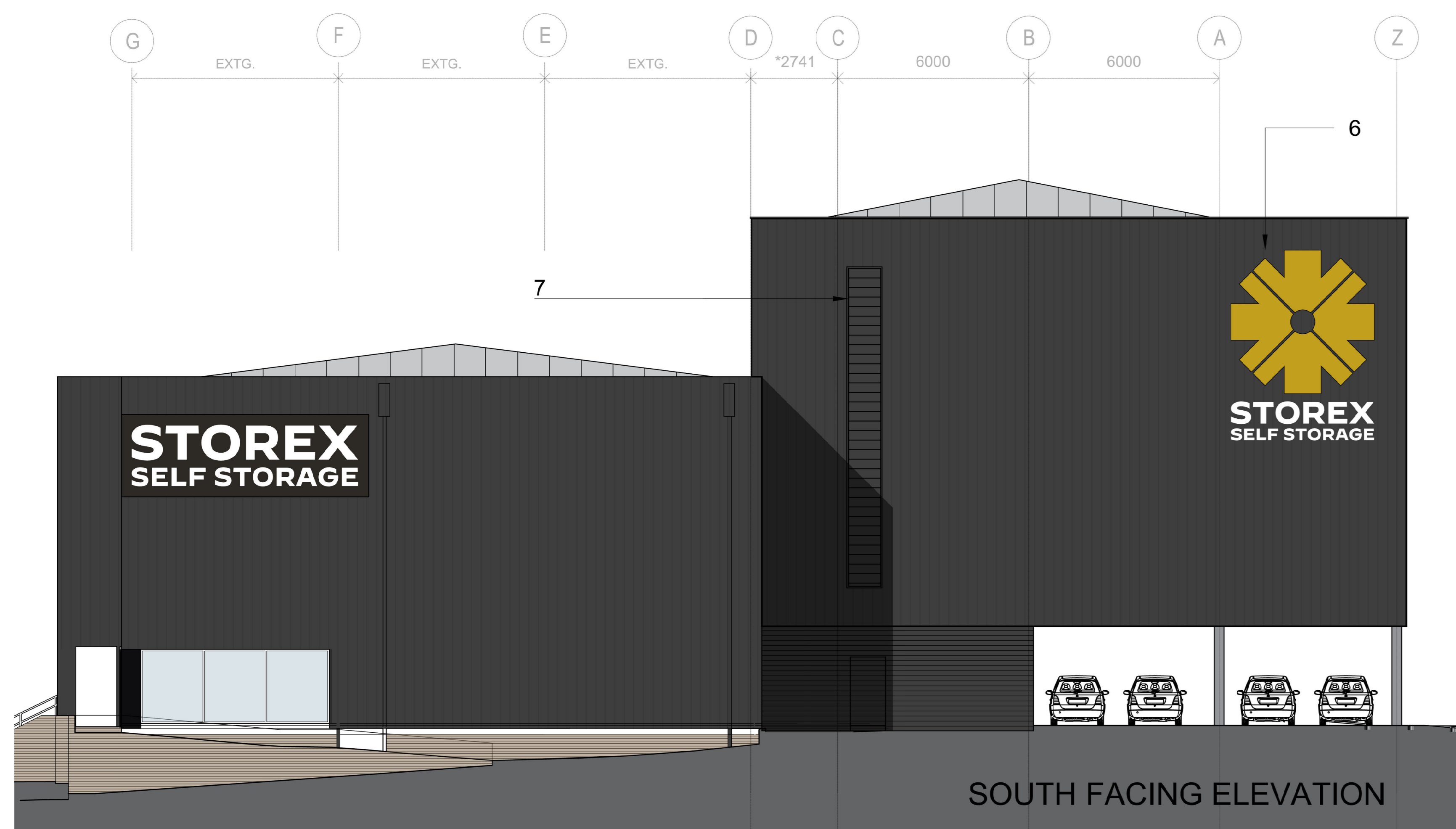
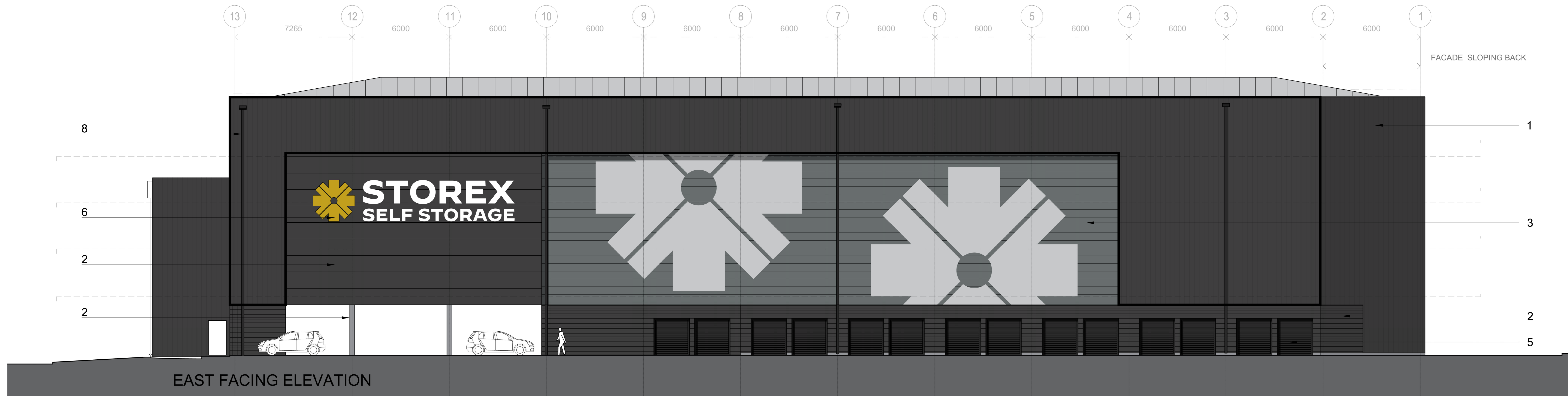


All levels and dimensions to be checked on site prior to construction / fabrication: report discrepancies immediately.  
This drawing is copyright protected.

REVISION	Facade updated	TF
A 210224	Materials updated	TF
B 280224	Materials updated	TF



**MATERIALS KEY:**

**1 - COMPOSITE WALL CLADDING PANEL (TRAPEZOIDAL):**  
Vertically laid Kingspan KS 1000 RW:  
Factory insulated composite AWP panels comprising of a 104mm XL Foam coated KS1000RW; Back RAL 9005

**2 - COMPOSITE WALL CLADDING PANEL (FLAT):**  
Vertically laid 45mm thk Kingspan QuadCore AWP KS600-1000 Mini Micorb:  
Colour Black RAL 9005

**3 - COMPOSITE WALL CLADDING PANEL (FLAT):**  
Vertically laid 45mm thk Kingspan QuadCore AWP KS600-100 Basalt RAL 7012 with large scale vinyl applied branding graphic

**4 - FIRE EXIT DOORS:**  
Proprietary PPC steel security single leaf.  
Colour: To match surrounding cladding panels.

**5 - ACCESS ROLLER SHUTTER DOORS:**  
Proprietary PPC steel security shutters.  
Colour: Black

**6 - SIGNAGE ZONES:**  
Signage to be determined as part of later advertising consent

**7 - SMOKE EXTRACT GRILLES TO FIRE LOBBIES**

**8 - RAINWATER DOWN PIPES (RWP)**

**9 - CAR PARK COLUMNS:**  
Concrete encasement to columns

SCALE 1:100  
0 1 2 3 4 5m

**PLANNING**

SCALE	DATE	DRAWN	CHECKED
1:100	Oct. '23	HP	TF

PROJECT  
EQT Exeter  
400 Edgware Road,  
Cricklewood, London: NW2 6ND

DRAWING  
External Elevations  
As Proposed

**Threesixty Architecture**  
10 MONTROSE STREET  
GLASGOW  
G1 1RE  
0141 229 7575  
www.360architecture.com

DRAWING No.  
23032GA\_D\_010B