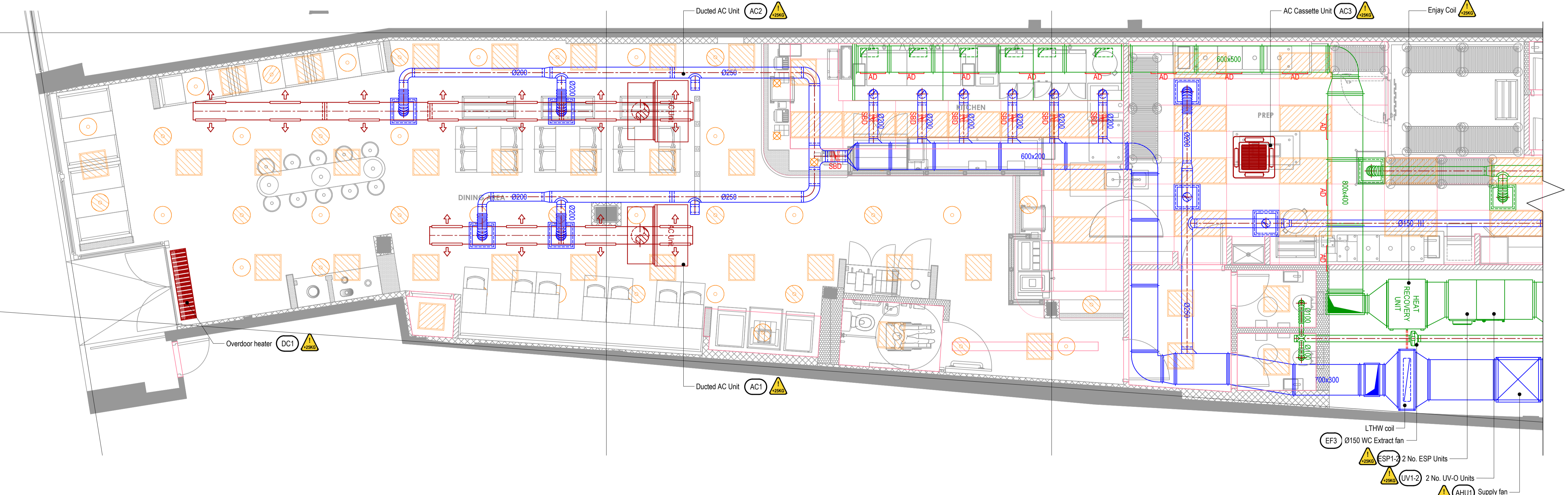
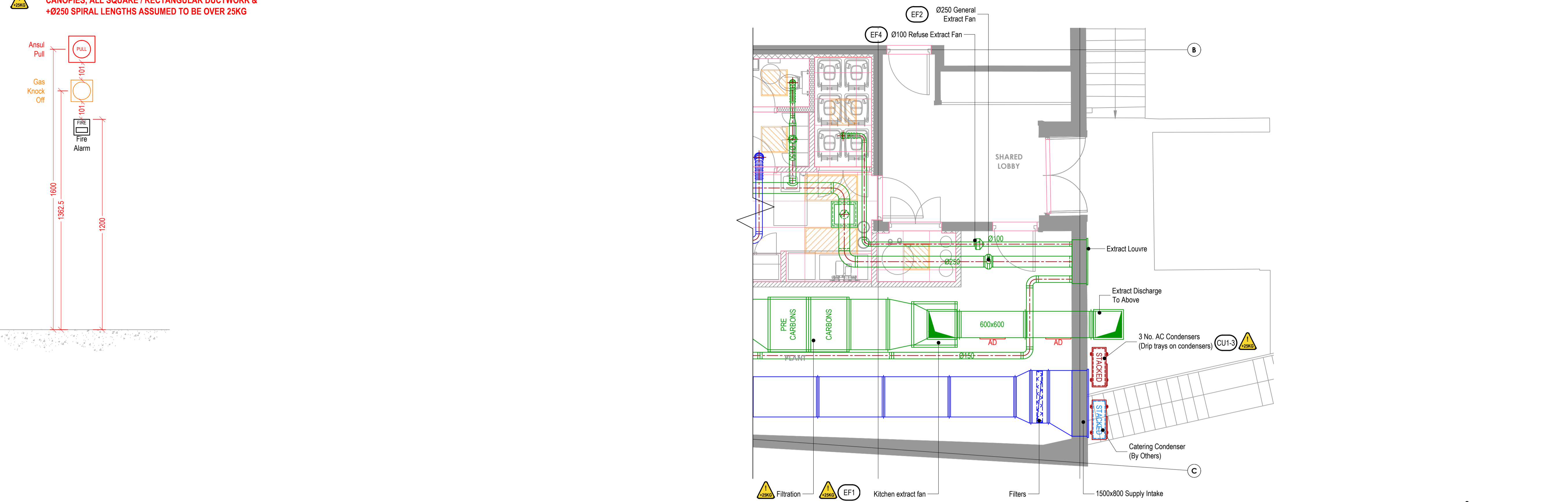
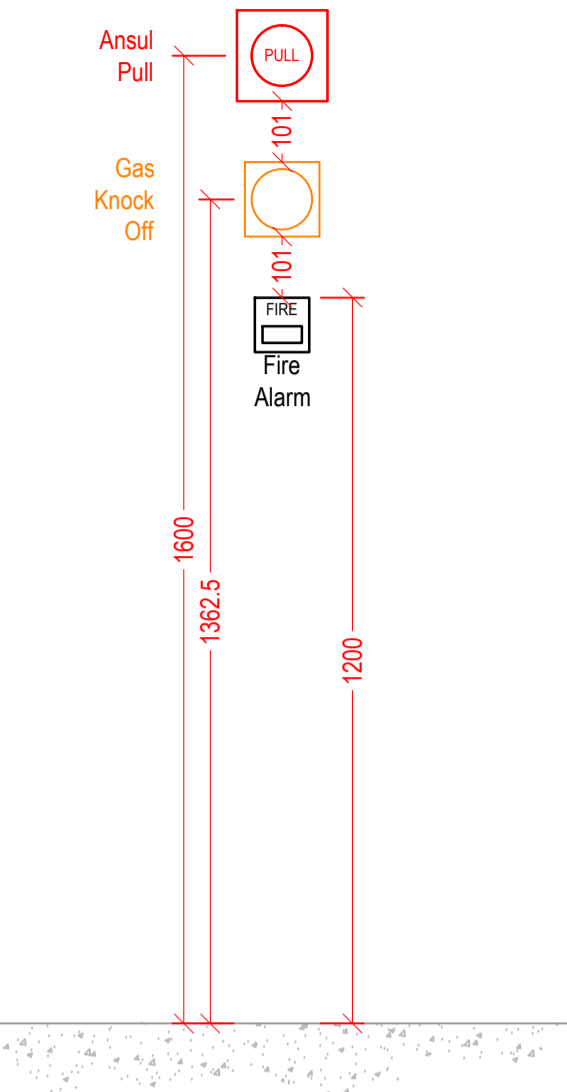


AD ACCESS DOOR IN KITCHEN
EXTRACT DUCT FOR CLEANING

EQUIPMENT OVER 25KG
CANOPIES, ALL SQUARE / RECTANGULAR DUCTWORK &
+Ø250 SPIRAL LENGTHS ASSUMED TO BE OVER 25KG



- General notes:
- Positions of all equipment, ductwork and fittings are indicative only.
 - Contractors shall confirm the sequence of installation works to ensure safe access is maintained.
 - Attention is drawn to health & safety issues. Liaise with the main contractor to ensure that installation works are programmed to minimise H&S risks and optimise co-ordination.
 - All dimensions / duct sizes are in millimetres unless otherwise stated.
 - This drawing was produced using CAD and should not be amended by hand.
 - All dimensions shown are for reference and should be checked on site prior to commencement of work.
- Specific notes:
- This drawing should be read in conjunction with all architectural, structural and drawings from other services (incl. mechanical, catering, electrical, sprinklers), along with contract documentation and specification for the works.
 - Ensure all method statements, sign offs and approvals are in place before proceeding with any work.
 - All work to be carried out in accordance with the current British Standards, B.S. codes of practice and building regulations.
 - The HVAC services works shall be carried out in full accordance with the client specification and shall, together with any standard technical guide and specification.
 - Ductwork shall be installed in accordance with all current industry standard guidelines / regulations.
 - Generated ductwork to be manufactured to DW144.
 - Ductwork sized in accordance with all current industry standard guidelines / regulations. Duct dimensions shown on drawings are their internal dimensions (not including flanges and fittings).
 - Access doors required on kitchen extract duct every 1500mm for cleaning and before / after every change of direction & should be accessible at all locations via ceiling access panels or gridded ceiling etc. Access panels to be provided by main contractor in any solid ceilings where final requirements indicated by HVAC installation contractor.
 - Duct connections with fans and other equipment to be a manufactured canvas connector to prevent duct leakage noise and transmission of vibrations.
 - Volume control dampers shall be installed on all branch legs and diffuser / grille terminals to facilitate commissioning.
 - Supply and secondary fan coil unit ductwork to be fully insulated.
 - Fresh air inlets and exhaust locations are shown individually on these drawings. The exact positions shall be agreed with the client, architect and the main contractor and shall be shown accurately on the working / co-ordinated drawings.
 - Position of all grilles / air valves shown are in optimum positions for air flow. The grilles to be positioned as close as practicable to location shown and coordinated with other services and fabric constraints.
 - Fire dampers are to be shown on ductwork (excluding kitchen extract ducts) penetrating fire compartment divides and shall incorporate certified fire dampers to match the barrier rating together with access panels. Reference to be made to architect fire strategy drawing to establish locations. Fire dampers are shown indicatively on these drawings.
 - All transfer grilles and ductwork where fire rated, shall match the fire rating of the wall in which it is installed.
 - Attenuation and anti-vibration measures shall be incorporated on all plant and ductwork supports in full accordance with acoustic consultant's specification.
 - Access required to all plant equipment for maintenance and cleaning.
 - Refer to catering specialist layout to determine confirmed canopy sizes and location.
 - Condensate drain from AC condensers to be cut to the nearest waste connection or rooftop drain. Condensate drains from the FCU's to be run to the nearest drain (25mm), subject to manufacturer and their requirements. Both shall be the equivalent plastic or copper sizes.
 - Install all mechanical equipment in accordance with manufacturers guidelines.
 - Catering condensers are not CUL equipment. However, they are indicatively shown on CUL drawings to allow for proposed space and access within the HVAC plant area.
 - Locations of all required floor, wall and roof openings shall be co-ordinated with all other trades involved.
 - No other loads (soffit services or man loading) shall be hung from ductwork supports.

METERAGE

SUPPLY DUCTWORK	0.0m
WC EXTRACT DUCTWORK	0.0m
AC PIPEWORK	0.0m

Quantities are for this sheet only

D	01/03/24	JJ	Condenser location updated
C	18/10/23	JJ	Extract & condensers updated
B	17/10/23	JJ	Extract & condensers updated
A	11/10/23	JJ	GA & RCP updated

No.	Date	Rev.	By	Revision Description
-----	------	------	----	----------------------

Client: **FIVE GUYS**
BURGERS and FRIES

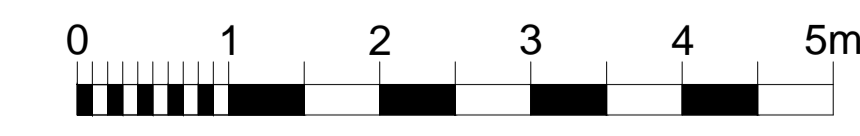
Project:
FIVE GUYS
144-146 HIGH STREET
BARNET
EN5 5XP

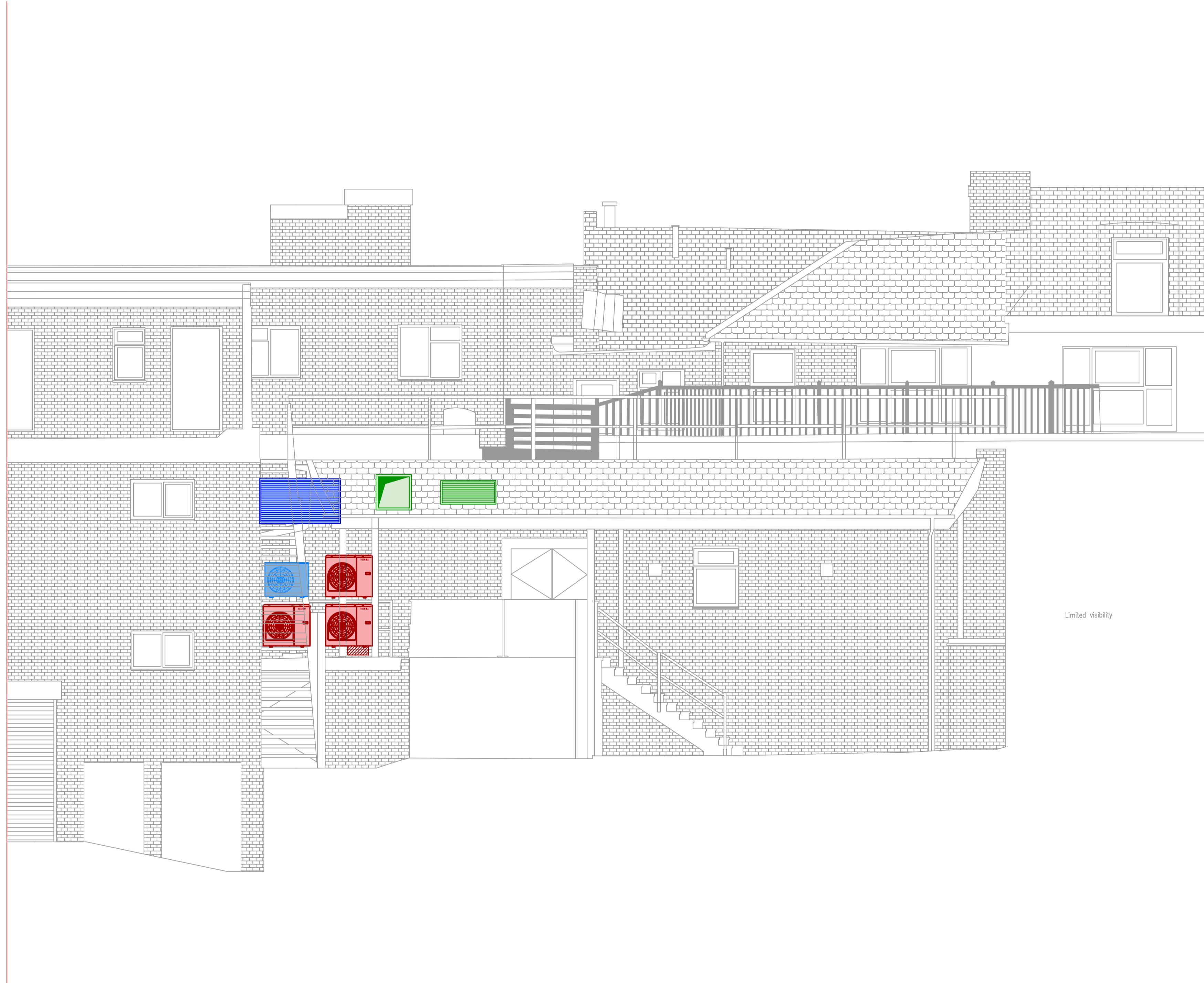
Drawing Title:
**GROUND FLOOR
HVAC LAYOUT**

Drawing No.:	Rev:
016-337-01	D
Scale: 1:50 @ A1 1:100 @ A3	
Drawn By: JJ	Checked By: - Date: 31/08/23

**chapman
ventilation**
15-20 Woodfield Road, Welwyn Garden City
Hertfordshire AL7 1JQ
Tel: 01707 372658 Fax: 01707 325001
E-mail: info@chapmanventilation.co.uk
Web: www.chapmanventilation.co.uk

Copyright of this drawing resides with Chapman Ventilation Limited ©





- General notes:
- Positions of all equipment, ductwork and fittings are indicative only.
 - Contractors shall confirm the sequence of installation works to ensure safe access is maintained.
 - Attention is drawn to health & safety issues. Liaise with the main contractor to ensure that installation works are programmed to minimise H&S risks and minimise co-ordination.
 - All dimensions / duct sizes are in millimetres unless otherwise stated.
 - This drawing was produced using CAD and should not be amended by hand.
 - All dimensions shown are for reference and should be checked on site prior to commencement of work.

- Specific notes:
- This drawing should be read in conjunction with all architectural, structural and drawings from other services (incl. mechanical, catering, electrical, sprinklers), along with contract documentation and specification for the works.
 - Ensure all method statements, sign offs and approvals are in place before proceeding with any work.
 - All work to be carried out in accordance with the current British Standards, B.S. codes of practice and building regulations.
 - The HVAC services works shall be carried out in full accordance with the client specification and in full together with any standard technical guide and specification.
 - Ductwork shall be installed in accordance with all current industry standard guidelines / regulations.
 - Generated ductwork to be manufactured to DW144.
 - Ductwork sized in accordance with all current industry standard guidelines / regulations. Duct dimensions shown on drawings are their internal dimensions (not including flanges and fittings).
 - Access doors required on kitchen extract duct every 1500mm for cleaning and before / after every change of direction & should be accessible at all locations via ceiling access panels or gridded ceiling etc. Access panels to be provided by main contractor in any solid ceilings where final requirements indicated by HVAC installation contractor.
 - Duct connections with fans and other equipment to be a manufactured canvas connector to prevent duct breakout noise and transmission of vibrations.
 - Volume control dampers shall be installed on all branch legs and diffuser / grille terminals to facilitate commissioning.
 - Supply and secondary fan coil ductwork to be fully insulated.
 - Fresh air inlets and exhausts locations are shown individually on these drawings. The exact positions shall be agreed with the client, architect and the main contractor and shall be shown accurately on the working / co-ordinated drawings.
 - Position of all grilles / air valves shown are in optimum positions for air flow. The grilles to be positioned as close as practicable to location shown and coordinated with other services and fabric constraints.
 - Fire dampers are to be shown on ductwork (excluding kitchen extract ducts) penetrating fire compartment divides and shall incorporate certified fire dampers to match the burner rating together with access panels. Reference to be made to architect fire strategy drawing to establish locations. Fire dampers are shown indicatively on these drawings.
 - All transfer grilles and ductwork where fire rated, shall match the fire rating of the wall in which it is installed.
 - Attenuation and anti-vibration measures shall be incorporated on all plant and ductwork supports in full accordance with acoustic consultant's specification.
 - Access required to all plant equipment for maintenance and cleaning.
 - Refer to catering specialist layout to determine confirmed canopy sizes and location.
 - Condensate drain from AC condensers to be cut to the nearest waste connection or to rooftop drain. Condensate drains from the FCU's to be run to the nearest drain (25mm), subject to manufacturer and their requirements. Both shall be the equivalent plastic or copper size.
 - Install all mechanical equipment in accordance with manufacturers guidelines.
 - Catering condensers are not CVL equipment. However, they are indicatively shown on CVL drawings to allow for provisioned space and access within the HVAC plant area.
 - Locations of all required floor, wall and roof openings shall be co-ordinated with all other trades involved.
 - No other loads (soff services or man loading) shall be hung from ductwork supports.

METERAGE

SUPPLY DUCTWORK	0.0m
WC EXTRACT DUCTWORK	0.0m
AC PIPEWORK	0.0m

Quantities are for this sheet only

A	01/03/24	JJ	Condenser location updated
No.	Date	Rev. By	Revision Description

Client:
FIVE GUYS
 (BURGERS and FRIES)

Project:
FIVE GUYS
 144-146 HIGH STREET
 BARNET
 EN5 5XP

Drawing Title:
REAR ELEVATION

Drawing No.:	Rev.:	
016-337-02	A	
Scale: 1:50 @ A1	1:100 @ A3	
Drawn By: JJ	Checked By: -	Date: 17/11/23

chapman ventilation
 15-20 Woodfield Road, Welwyn Garden City
 Hertfordshire AL7 1JQ
 Tel: 01707 372658 Fax: 01707 325001
 E-mail: info@chapmanventilation.co.uk
 Web: www.chapmanventilation.co.uk

Copyright of this drawing resides with Chapman Ventilation Limited ©

