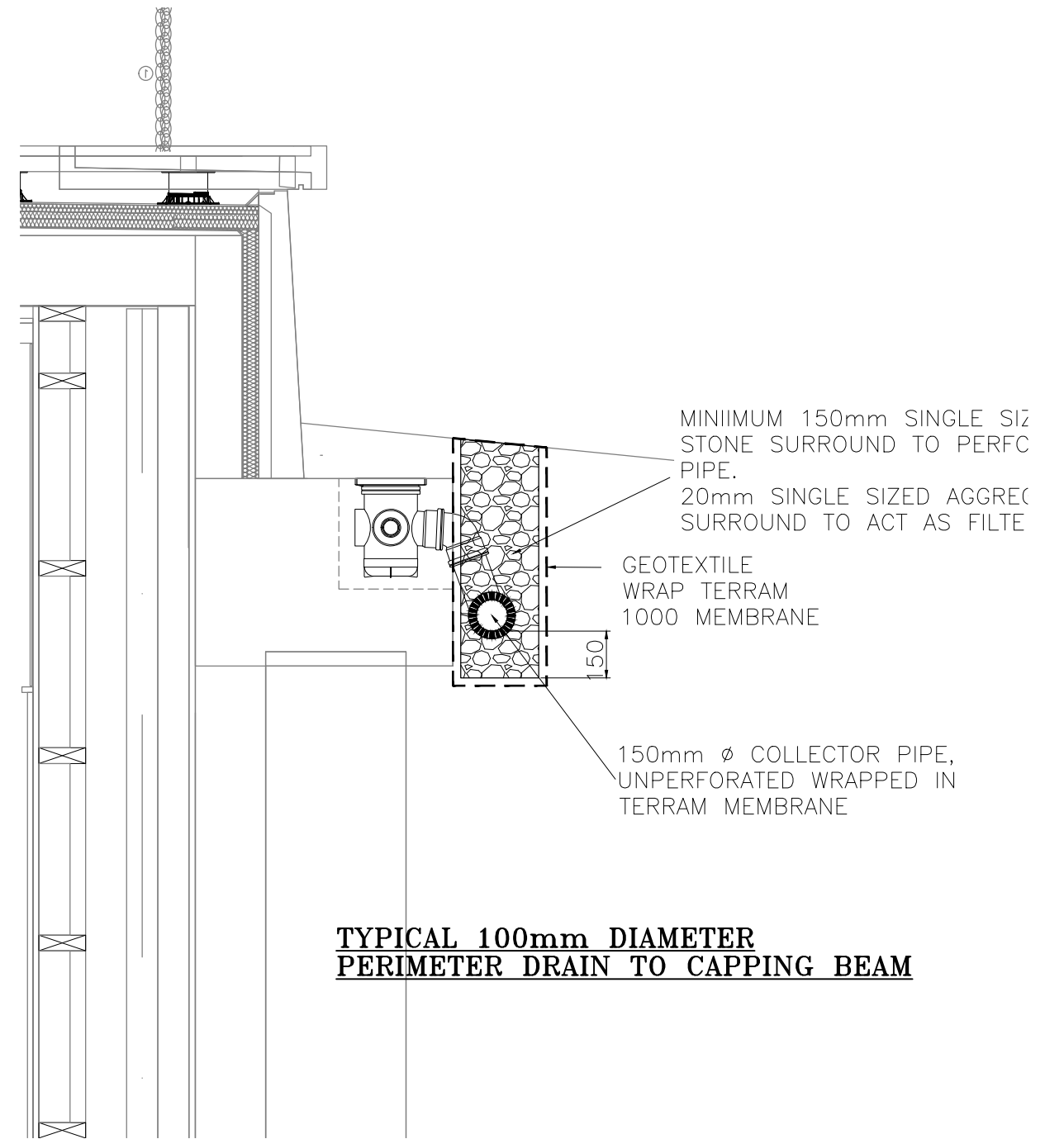


TYPICAL 100mm DIAMETER LAND DRAIN DETAIL TO LOWER GROUND FLOOR FOOTPRINT



TYPICAL 100mm DIAMETER PERIMETER DRAIN TO CAPPING BEAM

LAND DRAINS AT LOWER GROUND FORMATION LEVEL

1. LAND DRAINS TO BE LAID BENEATH FORMATION LEVEL OF LOWER GROUND FLOOR SLAB IF GROUNDWATER ENCOUNTERED DURING CONSTRUCTION.
2. EXISTING UNDERLYING GROUND CONDITIONS EXPECTED TO BE MEDIUM DENSE, BECOMING DENSE ORANGE BROWN, BROWN AND GREY MOTTLED SILTY SAND WITH LAYERS OF ORANGE BROWN AND GREY SANDY CLAY.
3. THE SURFACE OF THE FORMATION LEVEL IS TO BE PROTECTED FROM DISTURBANCE AND DAMAGE DURING CONSTRUCTION TO ENSURE THAT SILTY SAND FORMATION REMAINS UNDISTURBED.
4. CONCRETE BLINDING TO BE LAID OVER THE SURFACE OF FORMATION LEVEL WITH LAND DRAINS BENEATH TO ASSIST WITH DRAINAGE IF REQUIRED.

PERIMETER COLLECTOR DRAIN ADJACENT TO CAPPING BEAMS

1. THE PERIMETER COLLECTOR DRAIN IS TO BE LAID AS AN UNPERFORATED PIPE, BUT SET IN A SINGLE SIZED STONE SURROUND TO ACT AS A LAND DRAIN TO PREVENT SURFACE WATER COLLECTING ADJACENT TO CAPPING BEAM.

Revision	T1	ISSUE FOR TENDER	27.03.24	TB
Status	TENDER ISSUE			
Drawing Title	Perimeter storm pipe detail			
Architect	SIGNUM SPACE		Scale	1:20
Job	STAPLEFORD COTTAGE WOKING GU22 7HQ		Drawn	Checked
			AM 13.03.24	TB
BARNARD & ASSOCIATES Ltd Consulting Engineers 18 Northfields Prospect Northfields, London, SW18 1PE Tel No. 0208 874 9005 Fax No. 0208 870 7386 Email barnard@intonet.co.uk			Drg No.	Revision
			23170-713	T1
			F137 issue02 17.05.09	