

astley.

Delivering creative brand environments
through signage, print and digital solutions

The Co-op logo is displayed in a large, bold, dark grey sans-serif font. The letters are thick and blocky, with a clean, modern aesthetic. The 'o's are perfectly circular, and the 'p' has a distinctive curved tail.

Client:
Co-op

Full Address:
1 Muirhall St,
Coatbridge
ML5 3EA

FIM:

Site:
Coatbridge FNC

Drg by:
KS

Drawing Ref:
G_87699

Date:
27.03.24

Visual Status:
For review

Existing Views

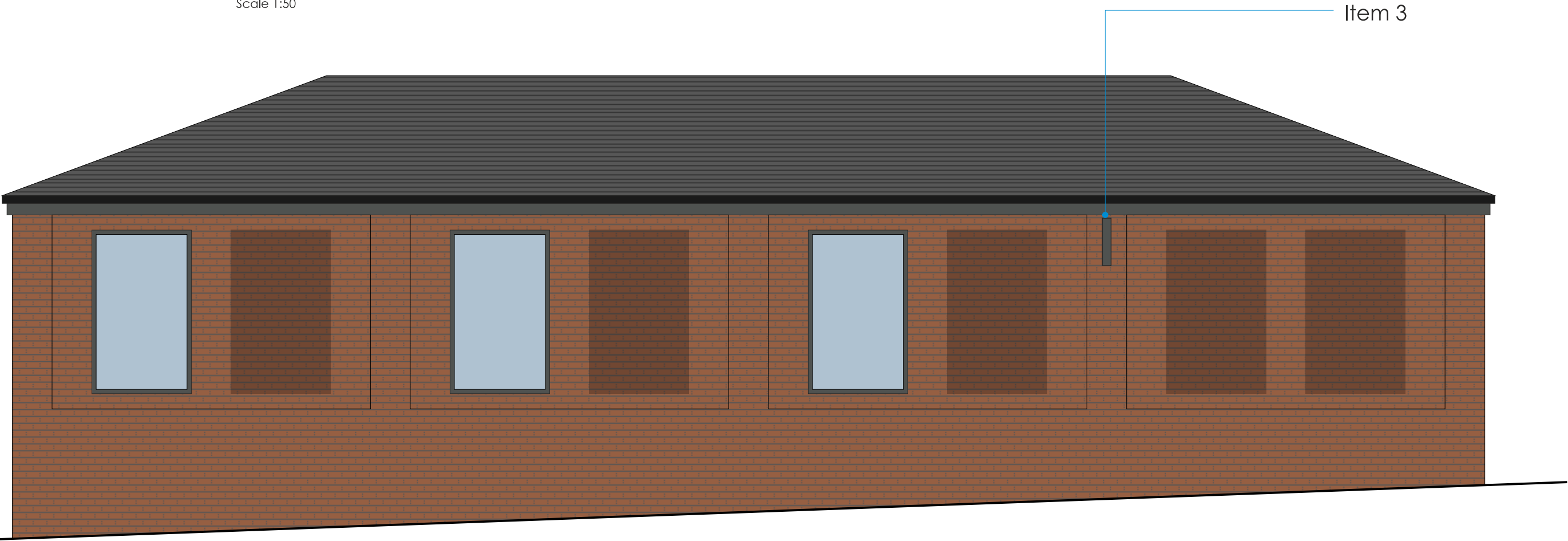


Proposed elevations

Scale 1:50 @ A3



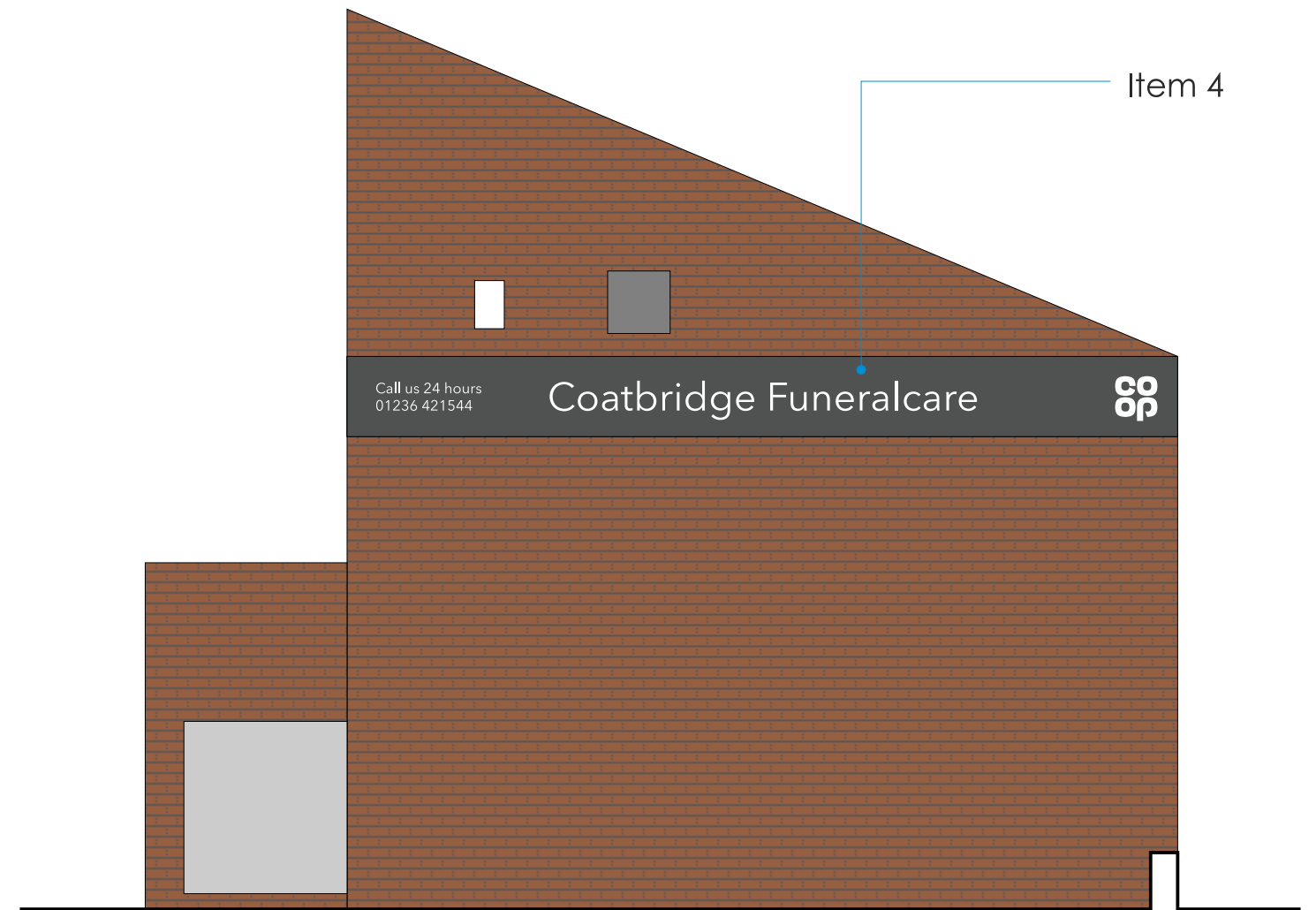
Front elevation
Scale 1:50



Lhs elevation

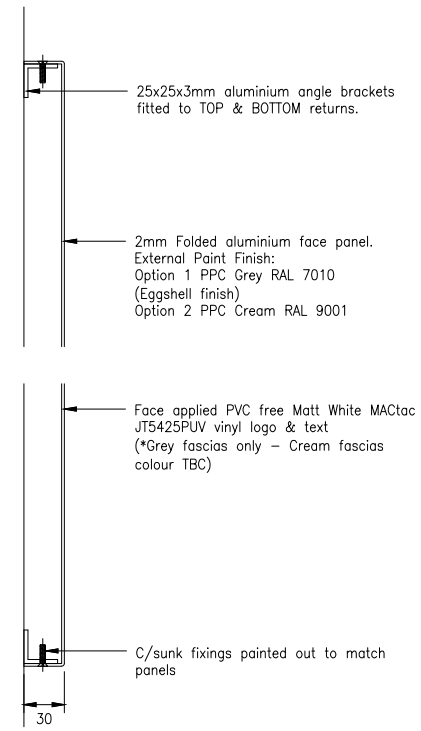
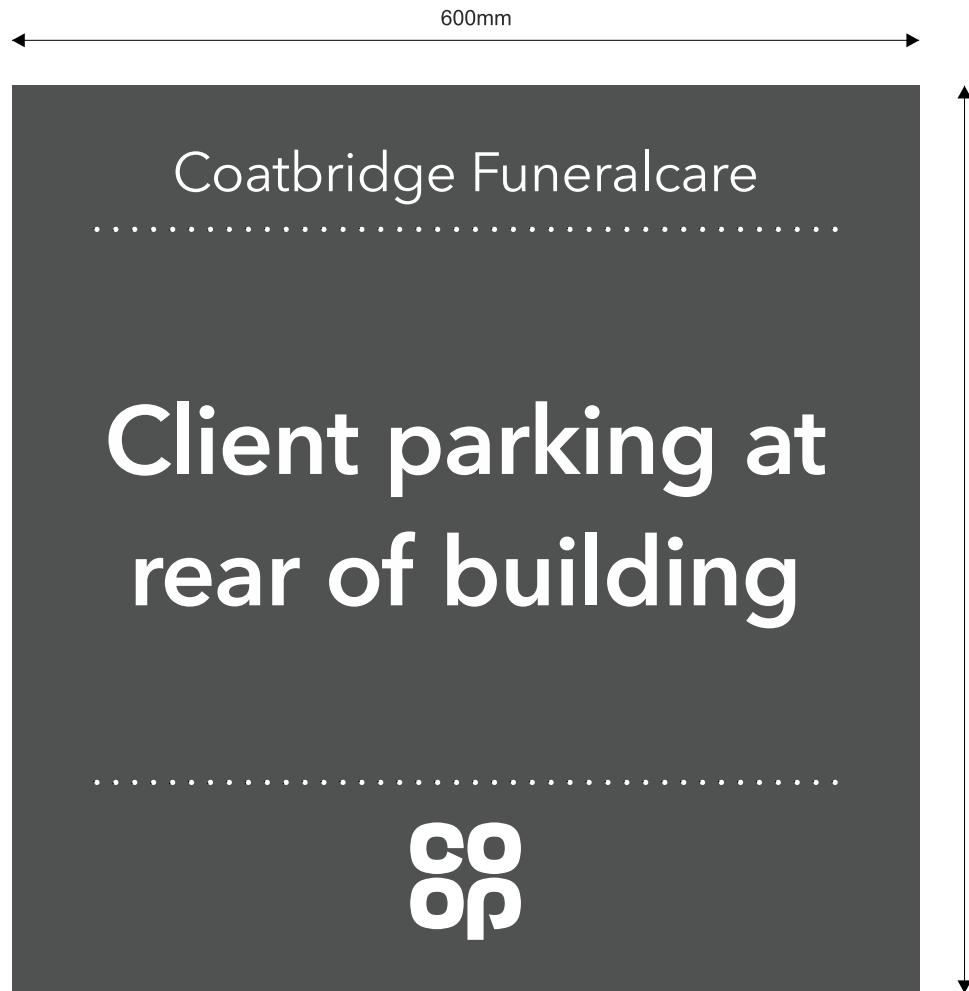


Existing



Rear elevation

Scale 1:50



Existing

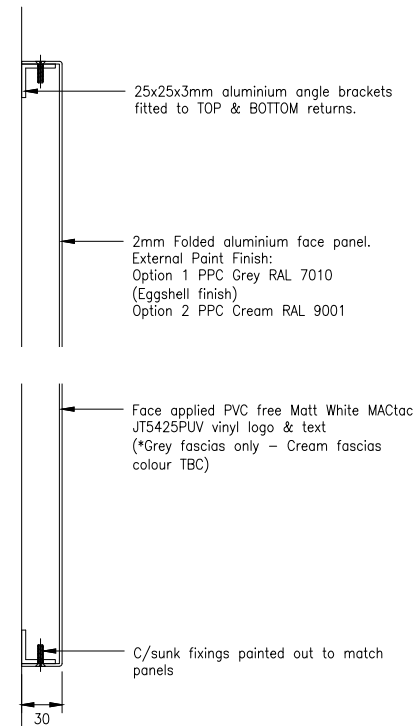
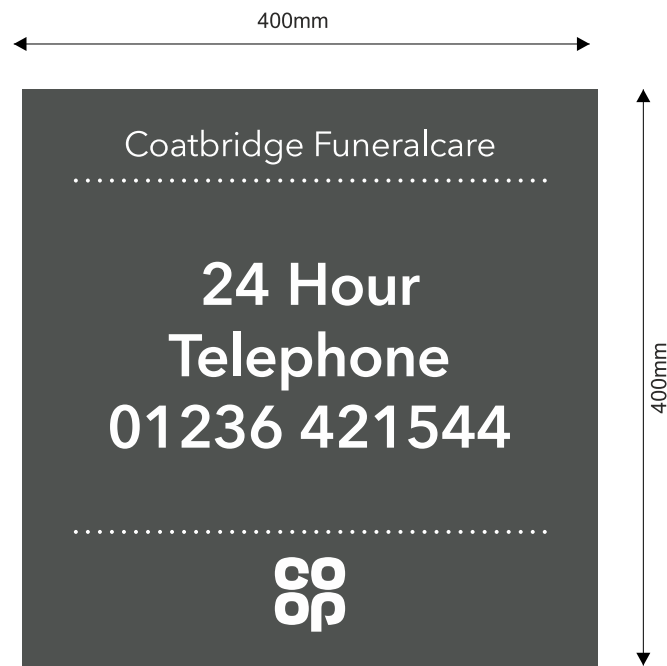
Item 1

Scale 1:5

1 No 2mm aluminium tray with 30mm returns, being powder coated in Funeral care Grey: RAL 7010 semi gloss externally. Matt white vinyl detail applied to panel face.

Sign fitted to wall using suitable fixings. Non illuminated

FFL to underside being: 1400mm



Existing

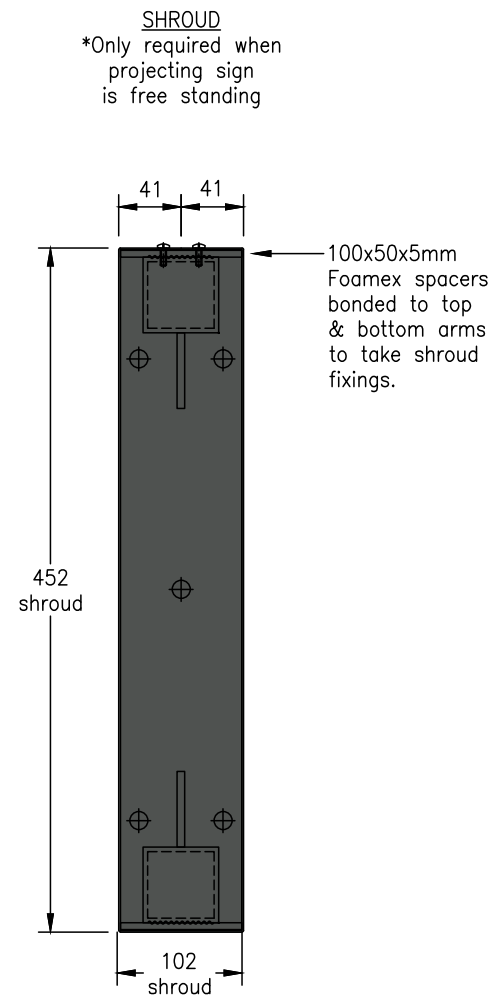
Item 2

Scale 1:5

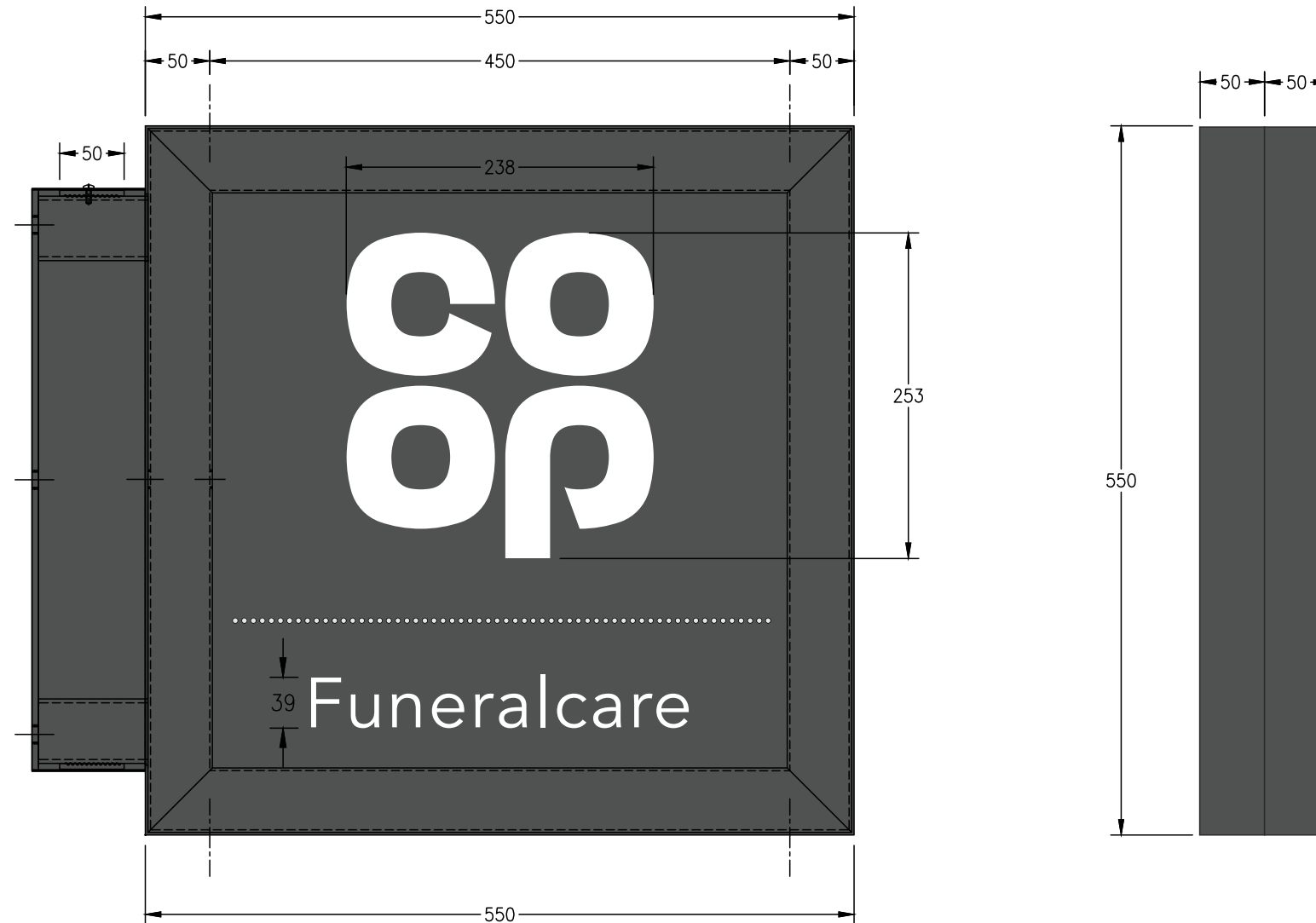
1No 2mm aluminium tray with 30mm returns, being powder coated in Funeral care Grey: RAL 7010 semi gloss externally. Matt white vinyl detail applied to panel face.

Sign fitted to wall using suitable fixings. Non illuminated

FFL to underside being: 1400mm



0.9mm aluminium folded shroud
PPC: to match face panels wrapped around Foamex spacers on frame arms & fitted through top return



Item 2

Scale 1:5

Text: Logo/Funeralcare (to both faces) Consisting of 2mm folded aluminium panels having 30mm returns fitted back to back around steel support framework, with mild steel projecting arms and fixing plate, being powder coated Grey Ral 7010 eggshell finish. Panel to have text/logo/dotts applied in matt white vinyl.

NON ILLUMINATED.

FFL to underside of sign being 2600mm

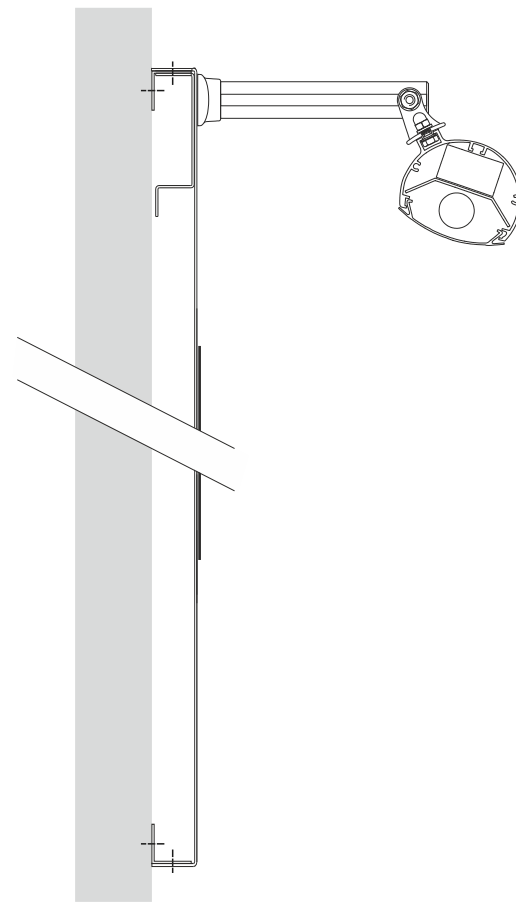
Item 4 Specification

Scale 1:5 @ A3

Scale 1:20 @ A3



Item 4
Scale 1:20



Side View

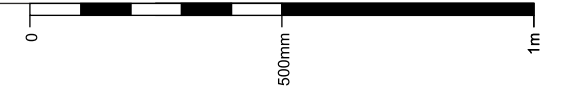
scale 1:5 @ A3

Aluminium fascia tray with 30mm returns powder coated in Funeralcare Grey RAL 7010 externally. Externally illuminated by trough light to top. Logos & text to be applied to panel face in white vinyl. Fixed by internal angle rails.

Static illumination from trough, less than 300cd/m²
FFL to underside being: 3440mm

Store fascia name to be confirmed

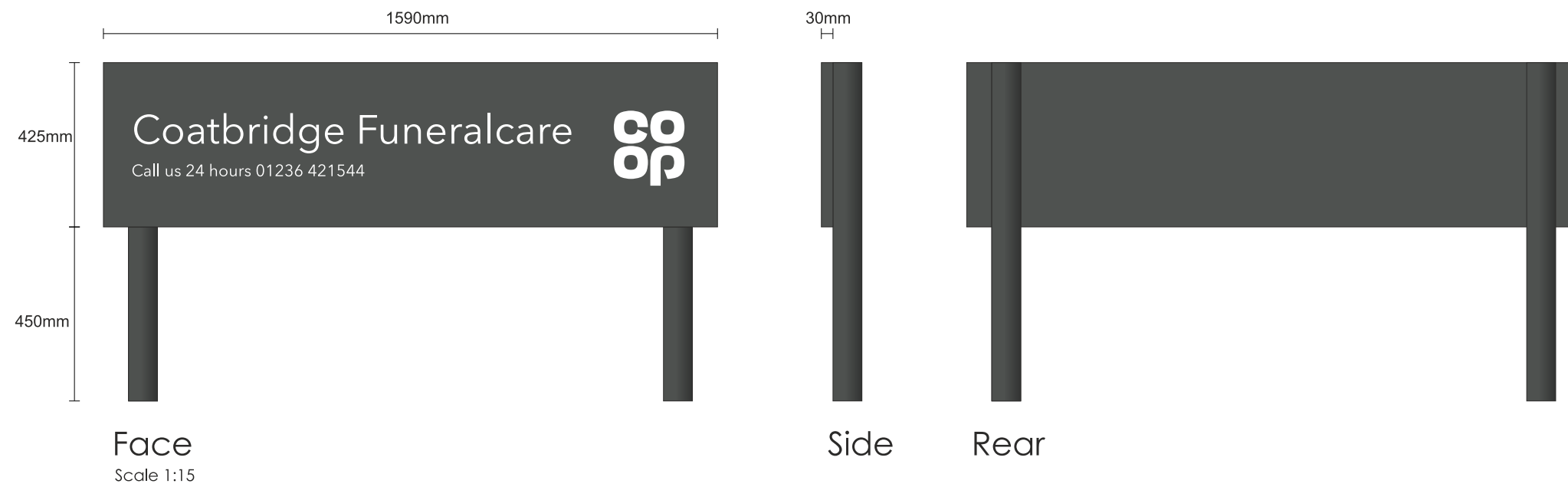
Phone number TBC



Existing



Proposed

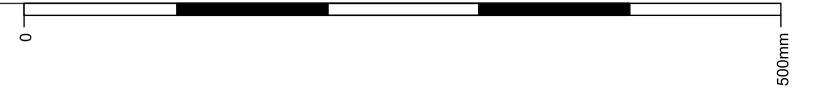


2No. existing post signs, having replacement panels only.

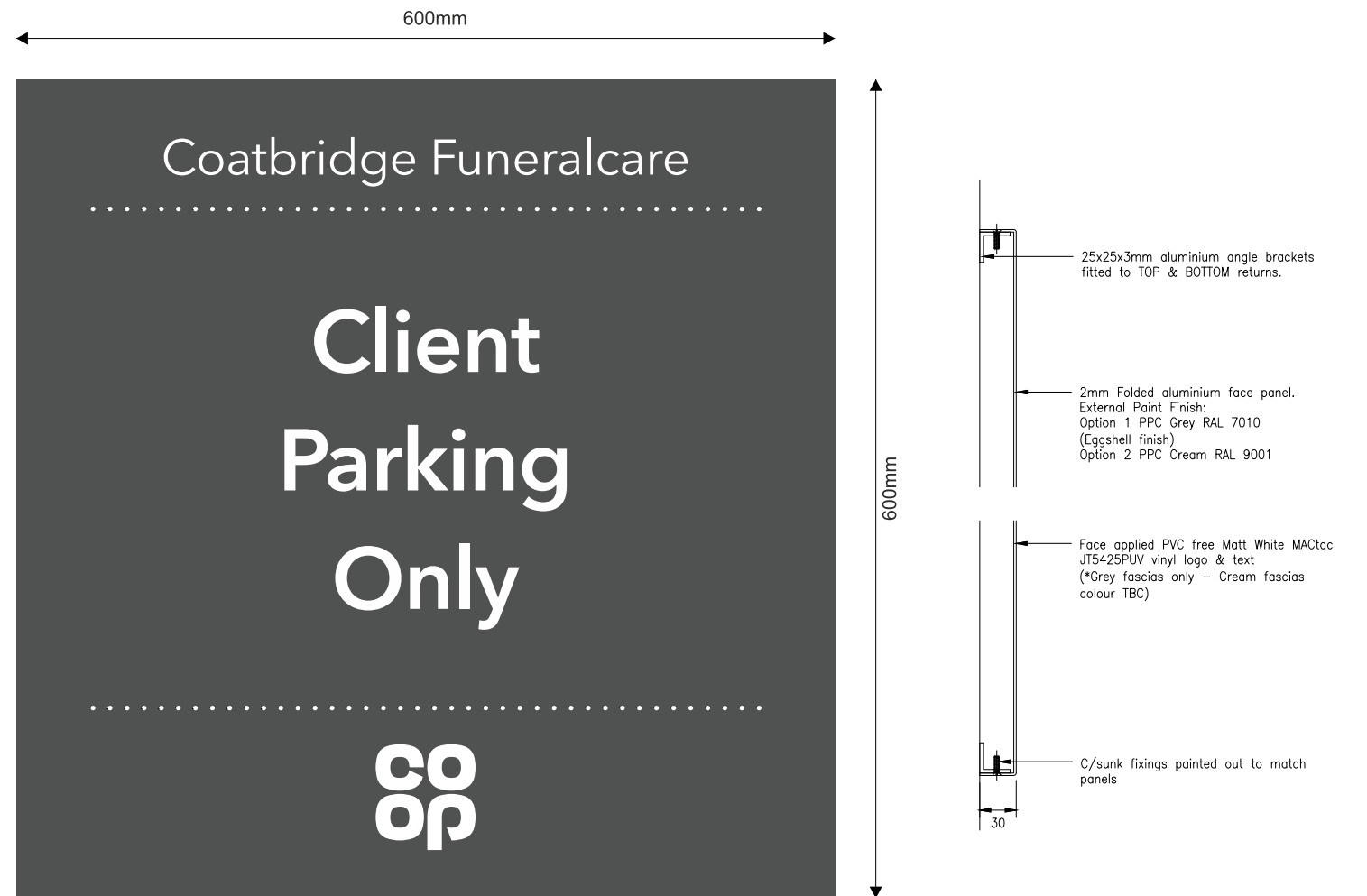
New folded aluminium panels with full back trays powder coated grey (RAL 7010) with face applied vinyl graphics & anti graffiti laminate.

Panels fitted existing circular metal posts, posts to be finished RAL 7010 on site.

Non illuminated.



Existing



Scale 1:5

1No 2mm aluminium tray with 30mm returns, being powder coated in Funeral care Grey: RAL 7010 semi gloss externally. Matt white vinyl detail applied to panel face.

Sign fitted to wall using suitable fixings. Non illuminated

FFL to underside being: 1400mm



Existing

Signage treatment T.B.C.

