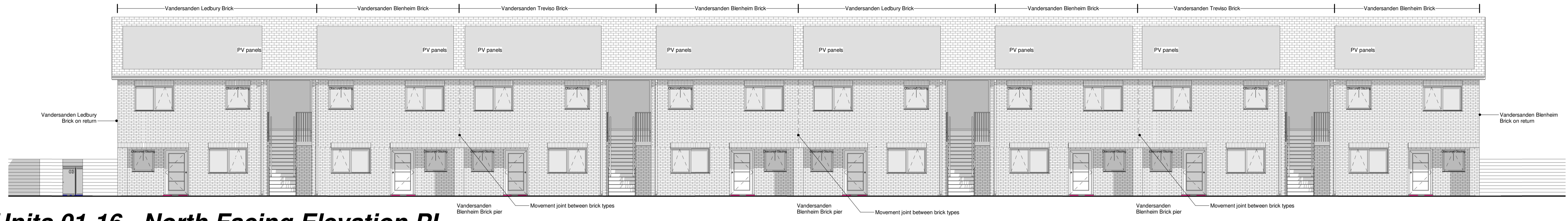


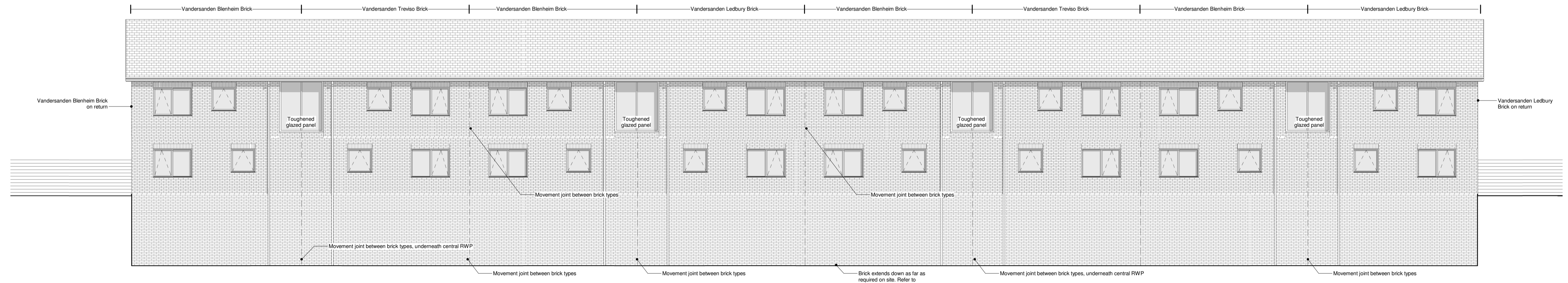
This drawing is COPYRIGHT. It must not be reproduced or disclosed to third parties without our prior permission. Do not from this drawing, or, interrogate and use electronic information.

Any discrepancies should be reported immediately.

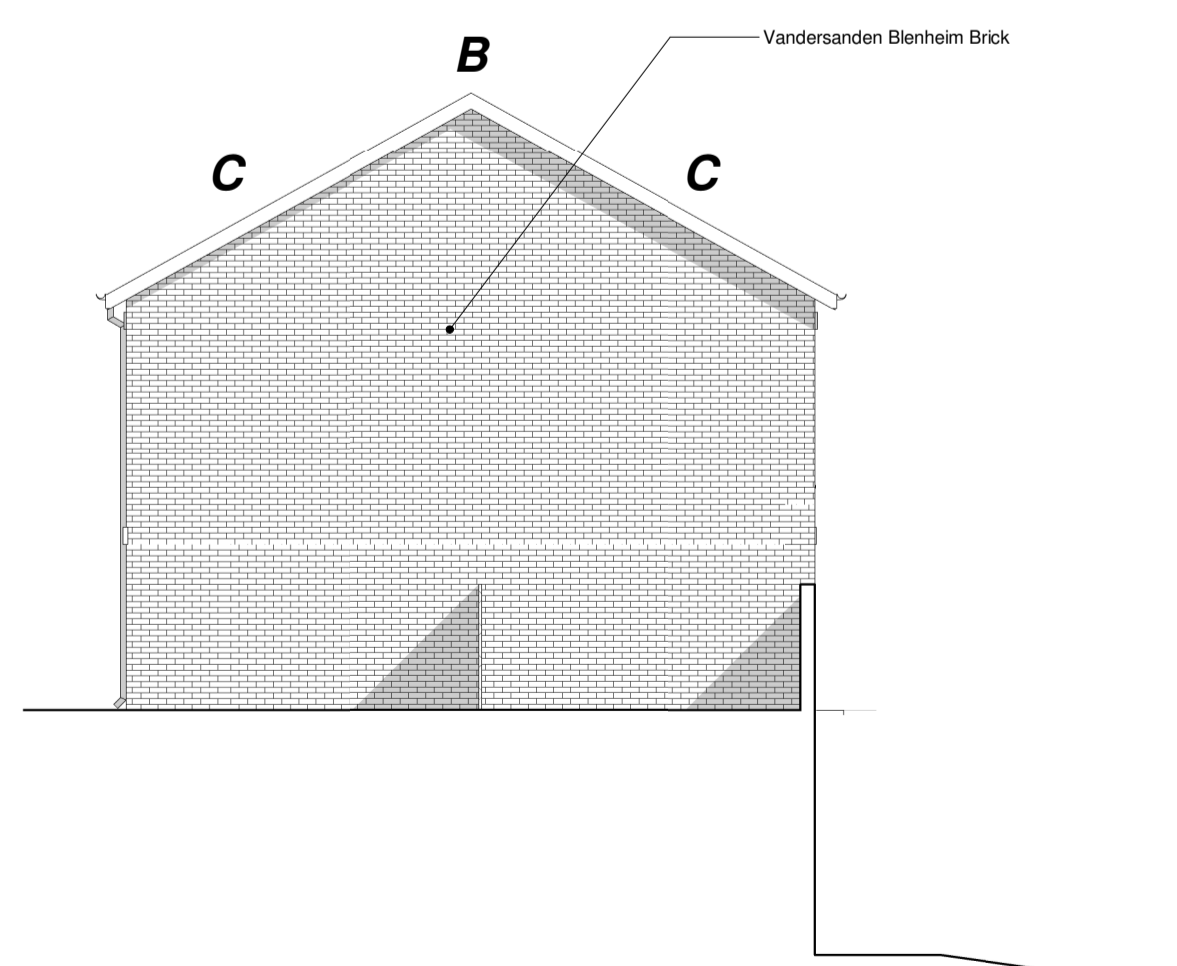
Any surveyed information incorporated within this drawing cannot be guaranteed as accurate unless confirmed by a fixed dimension. All dimensions are in millimetres unless noted otherwise.



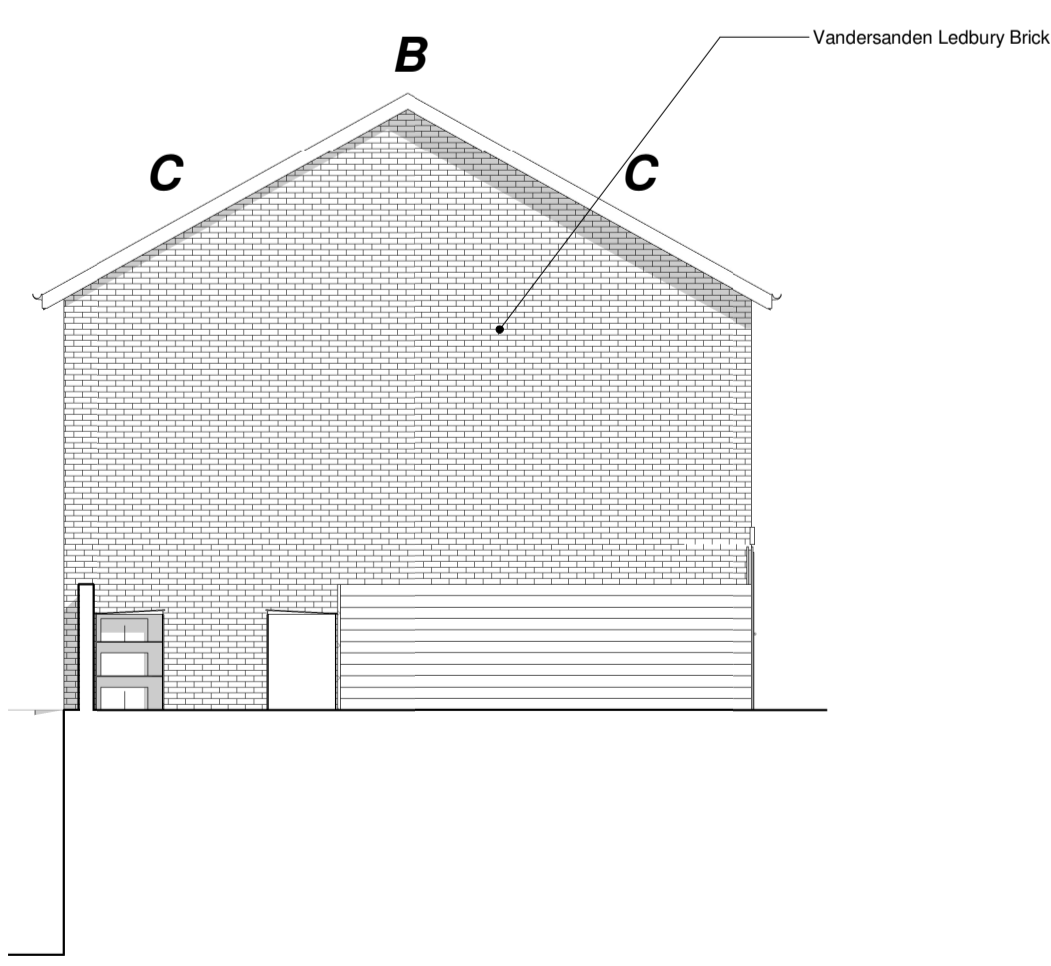
Units 01-16 - North Facing Elevation PL
1 : 100



Units 01-16 - South Facing Elevation PL
1 : 100



East Facing Elevation PL
1 : 100



West Facing Elevation PL
1 : 100

Bat Habitat Mitigation Measures Notes -
Based on Ecological Impact Assessment by Churton Ecology

B -
All gable end ridge tiles on the new blocks will have a mortar free access cavity for bats to utilize. This will be created by a wooden slug insert (15mm x 25mm) positioned within the end mortar bedding and can be removed when the mortar has gone off/green. This will ensure an access point for bats to the cavity above the ridge beam.

C -
In order to provide potential roosting areas for crevice seeking bats 4 bat slits will be created at the intersection of the brickwork/render & soffits/bargeboards on all gables of all the blocks. These slits will have minimum dimensions of 150mm x 20mm and be free from internal obstructions (i.e. felt/ratlers) to enable the bats to access the area above the gable end walls beneath the slates.

Project :- Proposed Residential Development, Robert Owen House			
Drawing Status :- Stage 4		Drawing Title :- GA Elevations Planning 02	
Scale :- 1 : 100	Date :- 02.02.24	Drawing No :- Y072.4.1.701	Rev :- C
Drawn by :- OO	Checked :- RL		