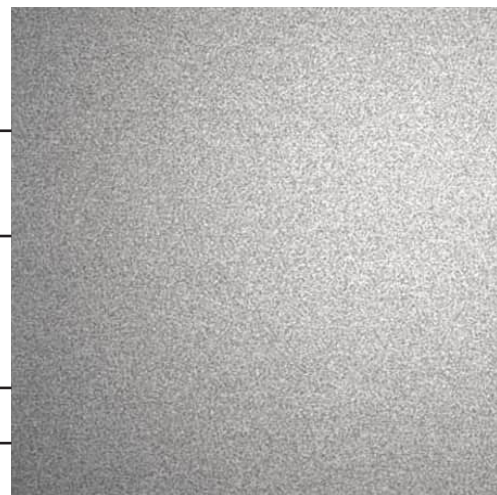


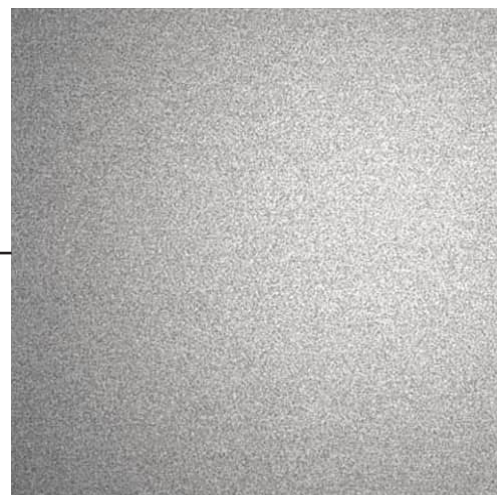
Standing seam roofing
to lift overrun to match
closely to RAL 9007



RAL 9007 Matt PPC
Metal projecting
surrounds to windows,
balustrades, visible
RWPs, louvres and
coping's



Petersen Tegl D54
Waterstruck blue-
tempered clay brick
with Anthracite mortar



RAL 9007 Matt PPC
Metal slimline frames
where visible to
windows

**Nick
Baker
Architects**

Second Floor, Lindsey House
40-42 Charterhouse Street
London EC1M 6JN
T +44 (0)20 7490 0644
info@nickbakerarchitects.com
www.nickbakerarchitects.com
Contents of this drawing are the copyright of Nick Baker Architects

**2-4 MELIOR PLACE,
LONDON, SE1 3SZ**

LBS Registered Number
18/AP/3229

Condition 5 Sign Off

08.04.2024



Sample Panel as
constructed onsite



**Nick
Baker
Architects**

Second Floor, Lindsey House
40-42 Charterhouse Street
London EC1M 6JN
T +44 (0)20 7490 0644
info@nickbakerarchitects.com
www.nickbakerarchitects.com
Contents of this drawing are the copyright of Nick Baker Architects

**2-4 MELIOR PLACE,
LONDON, SE1 3SZ**

LBS Registered Number
18/AP/3229

Condition 5 Sign Off

08.04.2024