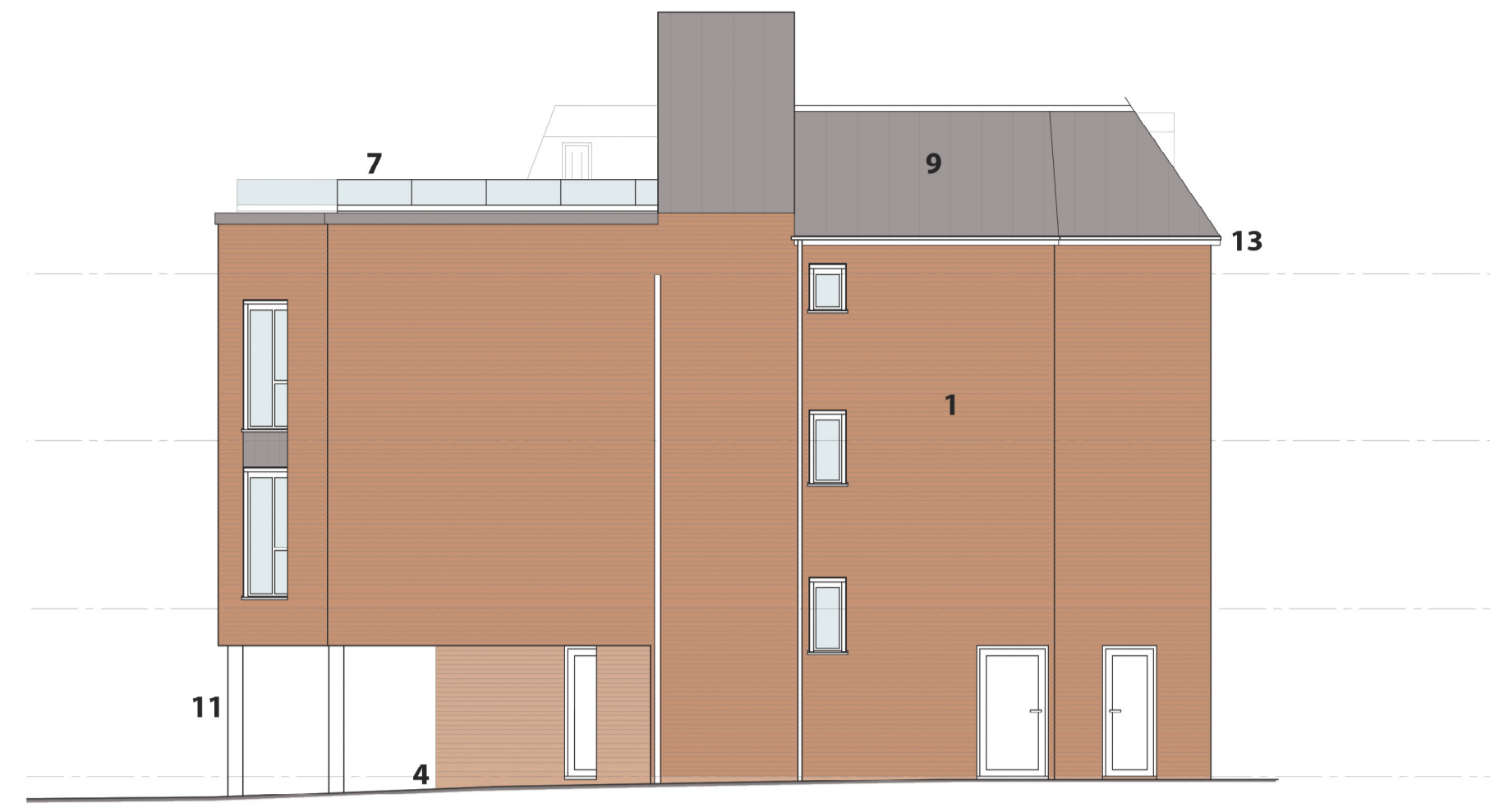


NOTES:
 © THIS DRAWING IS COPYRIGHT AND REMAINS THE PROPERTY OF RPS DESIGN GROUP LTD.
 SCALES INDICATED ARE FOR PLANNING PURPOSES ONLY - ALL DIMENSIONS TO BE CHECKED ON SITE



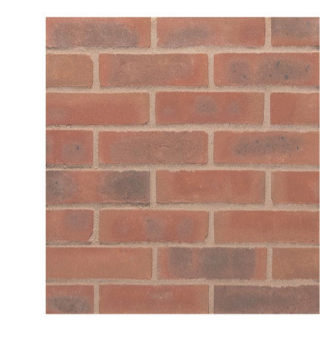
Proposed Elevation A - Scale 1:100



Proposed Elevation B - Scale 1:100

MATERIAL SPECIFICATIONS

1. Red / brown multi brick (Weinerberger Sandown Charrtham Multi or similar approved)



2. Standing seam Zinc facade infill panels (VMZINC ventilated cladding system in 'ANTHRA-ZINC' shade or similar approved)

3. PPC aluminium framed triple glazed windows RAL 7016

4. Engineering brickwork in shade / tone to match to DPC

5. Green wall specification by TIGA Europe Ltd (details to follow in relation to condition 27)

6. Green wall base gutter by TIGA Europe Ltd

7. Frosted toughened glass balustrade

8. Aluminium fascia RAL 7016

9. Standing seam Zinc Mansard roof ('ANTHRA-ZINC' shade or similar approved)

10. Aluminium cladding to face of dormer and cheeks

11. Steel supporting columns

12. Standing seam Zinc facade infill panels (VMZINC ventilated cladding system in 'ANTHRA-ZINC' shade or similar approved)

13. All rainwater goods ie. gutter and downpipes in black UPVC

14. Fascias and soffits in Rockpanel RAL 7016

15. Stair windows with obscure glazing



Proposed Elevation C - Scale 1:100



Proposed Elevation D - Scale 1:100



Proposed visualisation looking from the west



Proposed visualisation looking from the north

REVISION NOTES



0845 5442005
 rpsdesigngroup.co.uk

Project No: RPS_23.10_Bitterne Rd Supported Living

Client: A Head Of Time Estates

Site Address: 182-184 Bitterne Road West, Southampton, SO18 1BE

Drawing Title: Proposed Elevations & Material Details

Date: April '24 **Scale:** 1:100 @ A1

Drawn by: SS **Checked by:** RO

Drawing No: L111
STATUS: PLANNING CONDITION