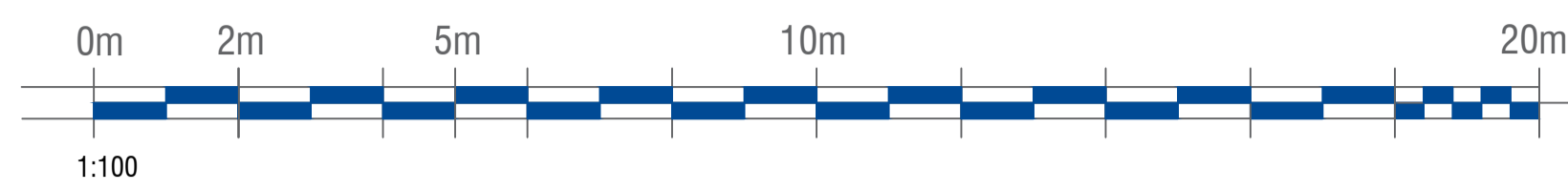


# FIELDON BRIDGE, BISHOP AUCKLAND

**POWERED ENTRANCE DOORS**  
 Electrical emergency unit EEU  
 The door is opened by means of a rechargeable battery unit in the event of power failure. The door remains in this position until the power is restored. The operator will then resume the function set by the program selector. The emergency unit is supervised by the operator control unit, which means that the door opens and remains in this position if a proper emergency opening no longer can be achieved.  
 Every 3.5 in the following opening impulse generates an emergency opening. If there is no opening impulse within an additional half hour the operator control unit generates the opening impulse itself. If the battery opens the door within the limited time the test is successful and the door resumes the function set by the program selector.  
 The electrical emergency function can also be used to close the door in the event of power failure.



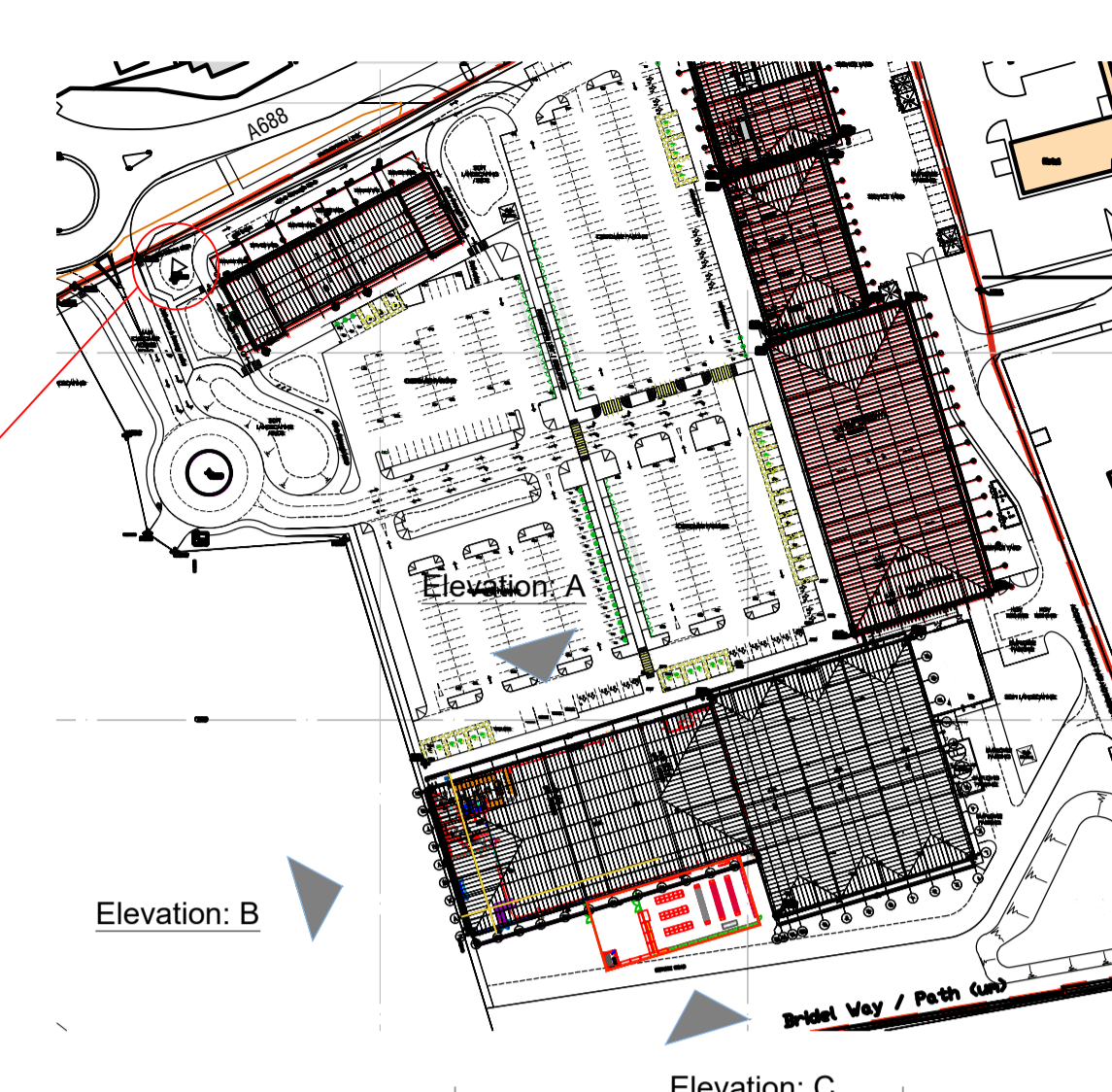
Signage to be internally illuminated. Illumination to be controlled by a time clock with photocell override.  
 Precise details of signage, shopfront and shutter may be subject to minor change following site survey

Home bargains would require a stainless steel tubular detail, trolley bay located directly outside of store. exact location to be agreed with landlord

**Flexi face signs**  
 The Front elevation sign will be a Vinyl flexi face on an aluminium subframe fitted to the existing sign zone. Sign to be approved by Landlords and Local authority.

Illuminated external shopfront signs to be connected to isolator switch via seven day time clock situated within electric cupboard.  
 Cable for external signs to be left protruding through wall, for signage contractor in position of each sign.

Retail park shared Totem - HB to have a sign included

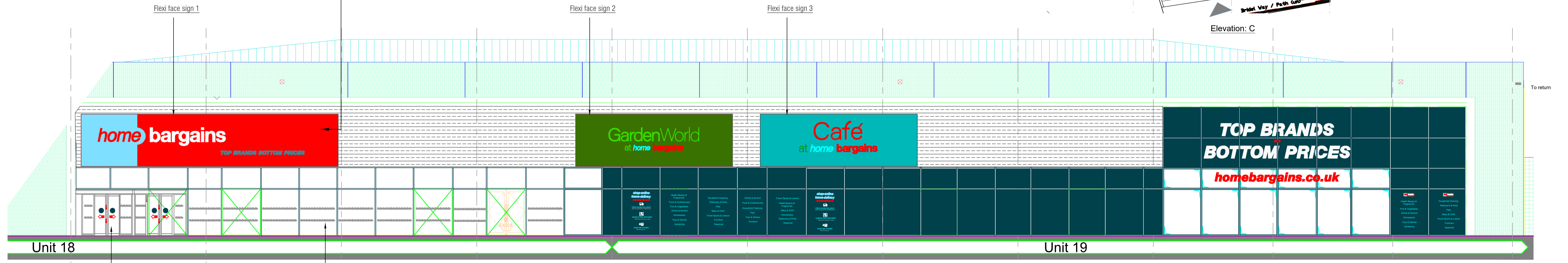


Project No.	Drawg. No.	Revision
FBTJM	111	A

## CONSTRUCTION

This drawing remains the COPYRIGHT of T.J.MORRIS LTD and must not be used for any other purpose without permission.  
 Do not scale from this drawing. All dimensions to be checked by site measurement and discrepancies reported immediately.  
 This drawing must be read in conjunction with all Architects, Consultants, Subcontractors and Specialists drawings, together with Contract Administrators' drawings, specification and other contract documents.

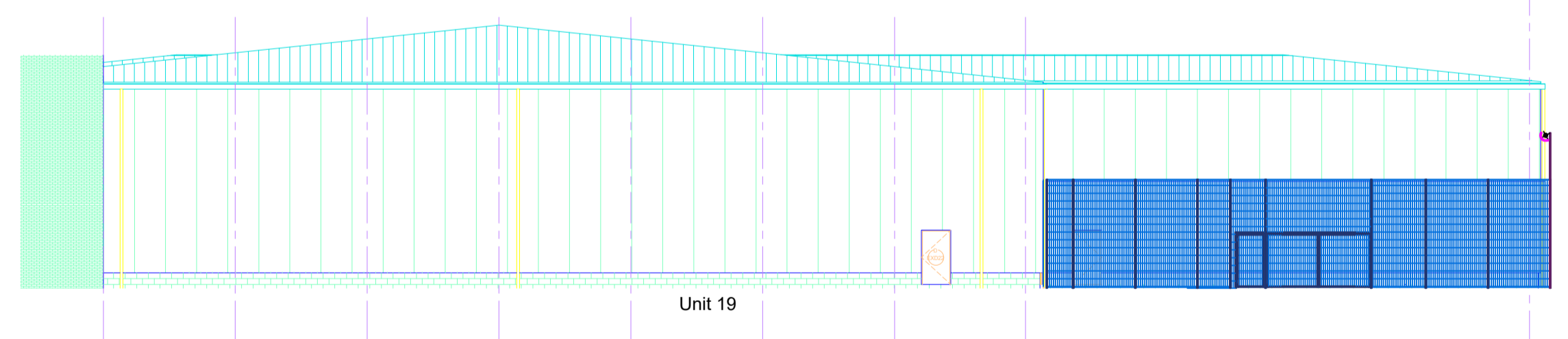
INDICATIVE DRAWING ONLY: SUBJECT TO FULL MEASURED SURVEY.



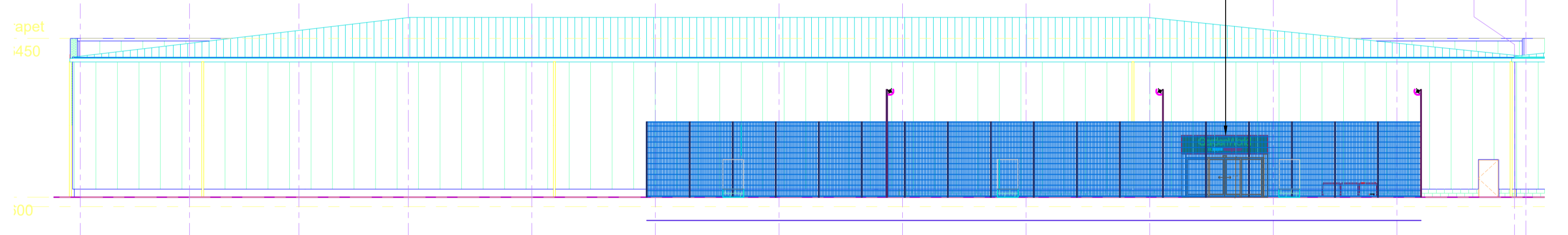
PROPOSED ELEVATION: A 1:100

New powder coated aluminium shopfront entrance sliding doors. (colour-RAL 7011 80% Gloss) fixed into extg openings. Sliding exit and entrance doors to have fail safe open on activation of the fire alarm or mains failure. The doors can also be manually operated in the event of the sensor failing. Designed and built in accordance with BS 7036:1996.

Window graphics to be vinyl applied to inside face of shop front glazing.  
 Vinyl window graphics to be applied in compliance with building regulations

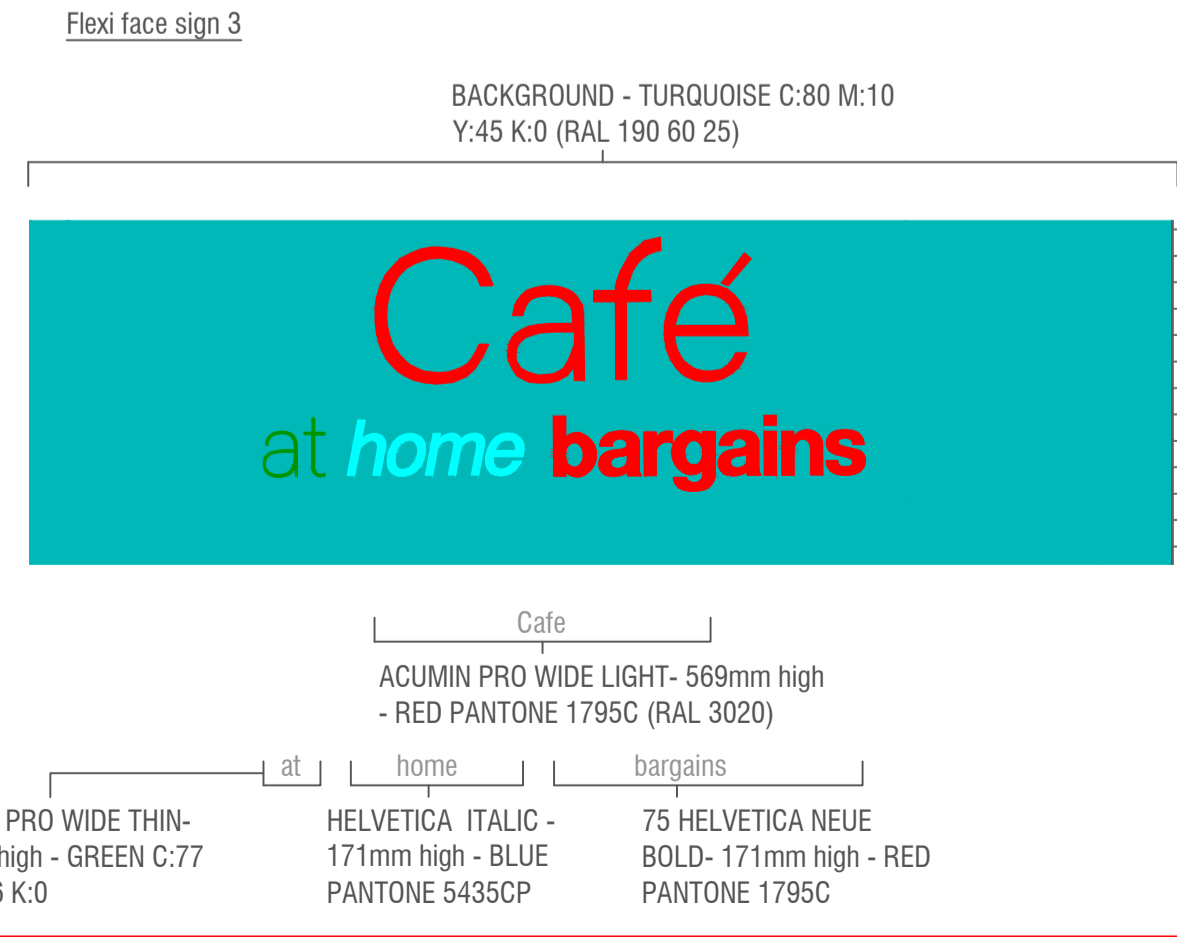
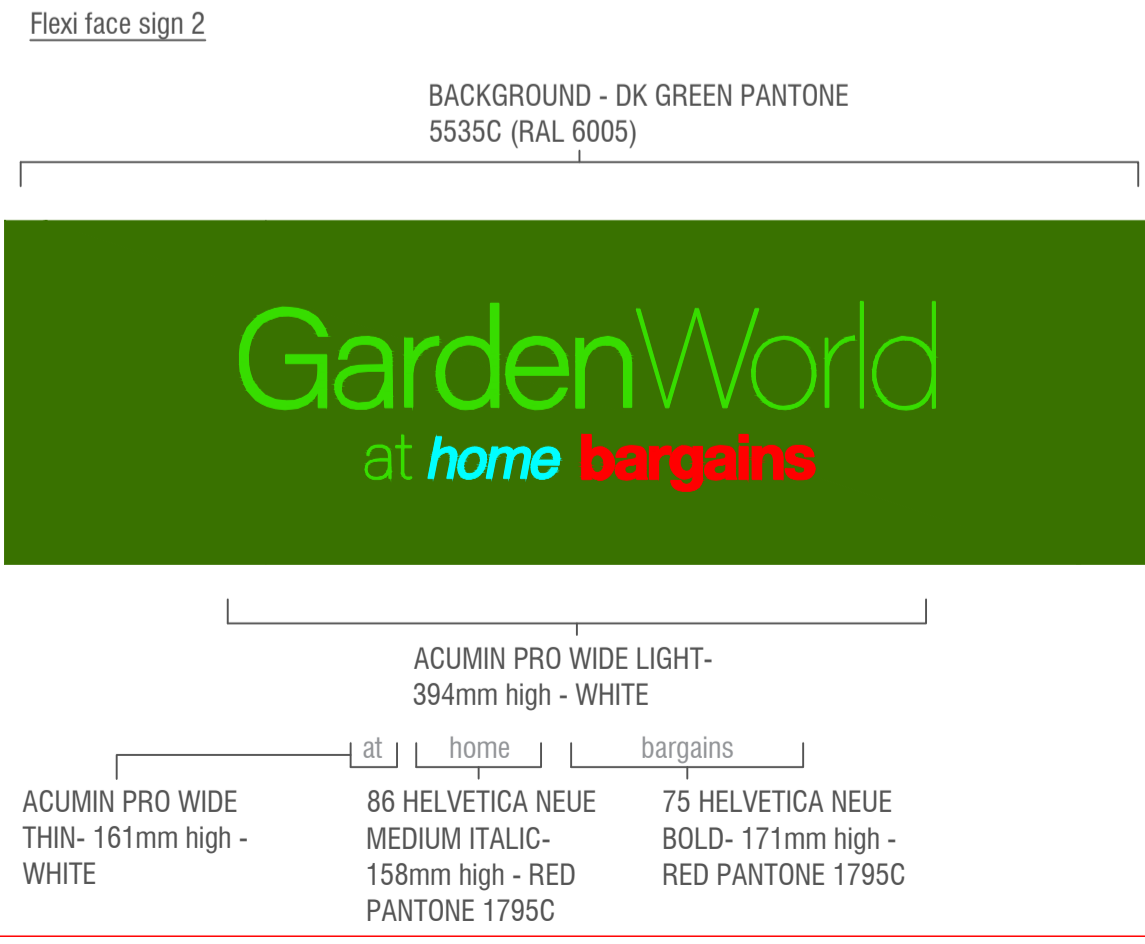
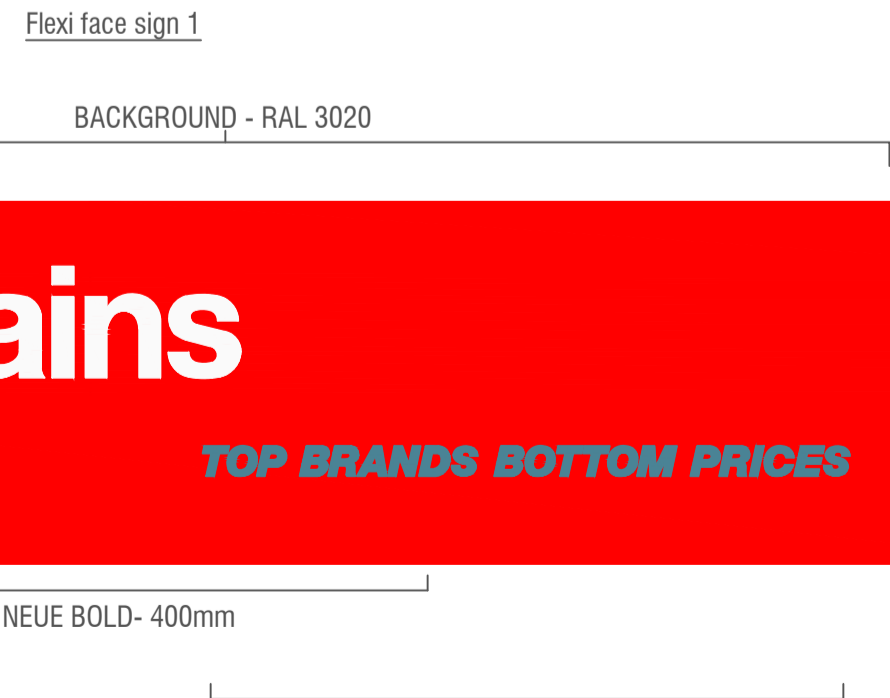


PROPOSED ELEVATION: B 1:200



PROPOSED ELEVATION: C 1:200

### SIGN DETAILS



Illuminated external shopfront signs to be connected to isolator switch via seven day time clock situated within electric cupboard.  
 Cable for external signs to be left protruding through wall, for signage contractor in position of each sign.

Rev	Int.	Description	Date
A	LP	Fascia signs revised	07/02/24



T.J. Morris Limited, Axis Business Park, East Lincalne Road, Gillingham, Liverpool L11 6JA, Tel: 0151 530 2920

Project	FIELDON BRIDGE, BISHOP AUCKLAND ST HELEN AUCKLAND
Title	PLANS AS PROPOSED ELEVATIONS
Date	NOV 23
Scale	1:100
Sheet Size	A1
Drawn	L.PURCELL
Checked	

Project No.	Drawg. No.	Revision
FBTJM	111	A