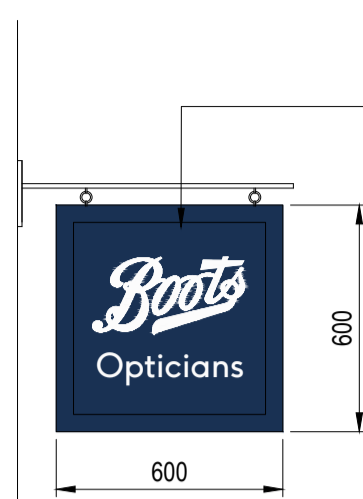


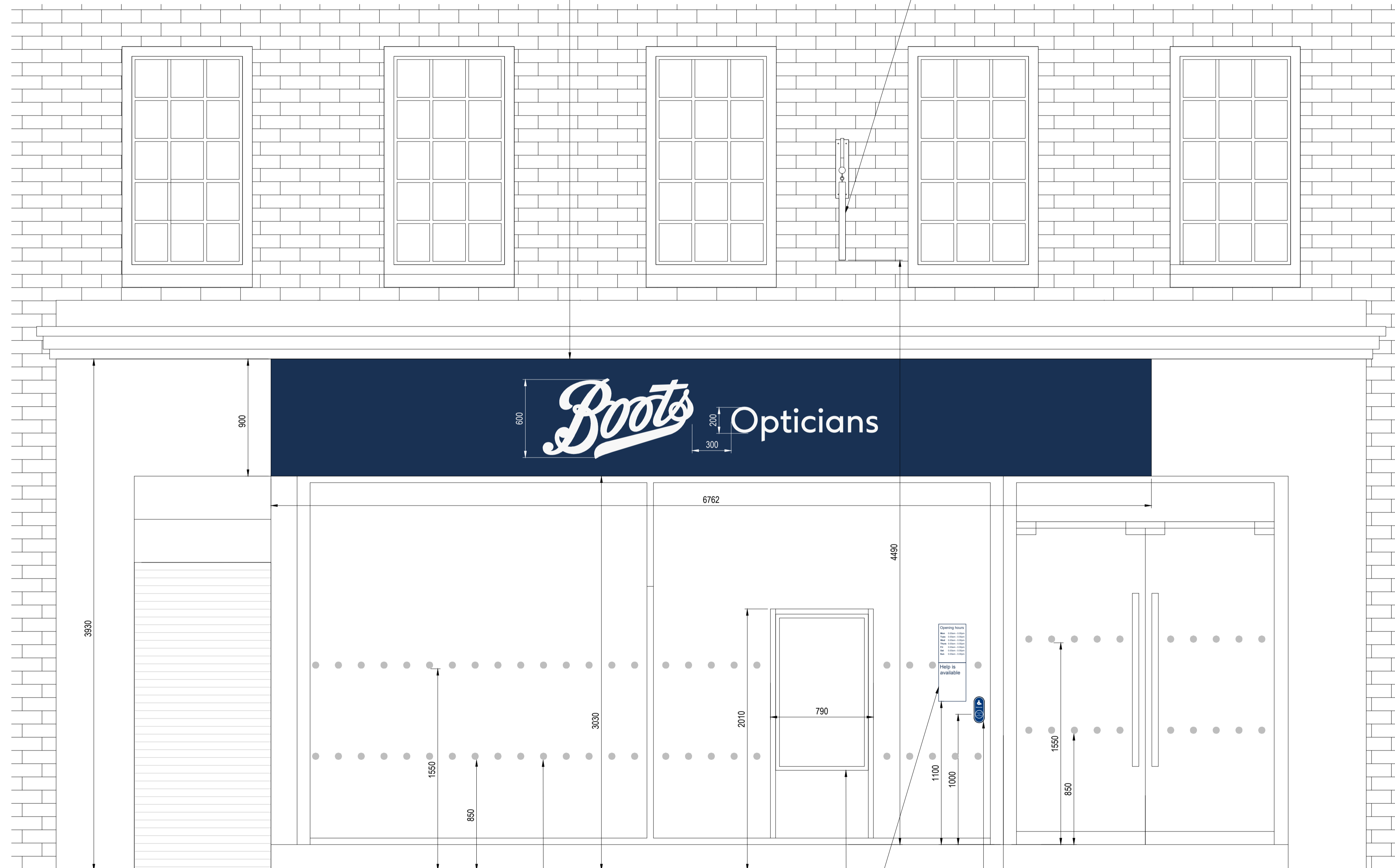
NOTES  
Do not scale this drawing unless for planning purposes

Existing stonework fascia to be Dulux Weathershield to match RAL 5013 Cobalt Blue - Matt finish. Surface mount fret cut opal (white) acrylic letters "Boots script & Opticians" text stood off of the stone fascia - illuminated backlit LED.



Proposed Projecting Sign

1 No new 600mm x 600mm hanging powder coated aluminium RAL 5013 Cobalt Blue timber effect heritage look projecting sign with decorative cornice detail to perimeter, white vinyl applied "Boots" script & "Opticians" text to each side. Hung from black metal powdercoated heritage style bracket. Provide external illumination via LED batten fitting to each side.



Proposed Front Elevation

Manifestation Ø250mm frosted vinyl dots at 175mm centres applied to internal face of glazing.

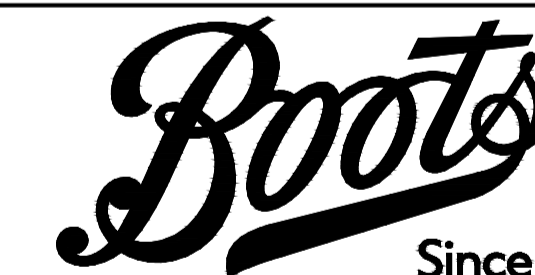
1 no "55" static double sided lightbox totem display located internally within the store.

2 no A4 vinyls applied to internal face of glazing colour clear with dark blue text stating opening hours and help available

DDA "Touch here for Assistance" cordless door bell mounted to internal face of glass.

Fascia signage sizes TBC on site by Signage Contractor prior to manufacture

PLANNING



NOTTINGHAM  
NG90 1BS

0115 950 6111



Project Name  
Store 3346  
8-10 Coney Street  
York YO1 9NA  
Drawing Title  
Proposed  
Front Elevation & Projecting Sign

Dept.  
Drawn MC Approved KC  
Scale 1:20@A1 Date 27:03:24

Drg No. 3346 / C276972 / 121 Rev.

