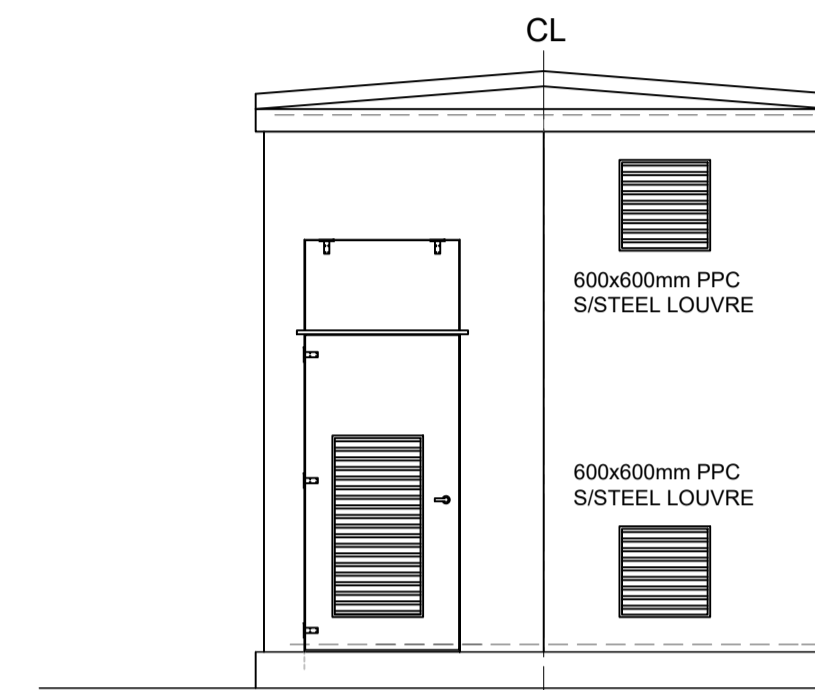
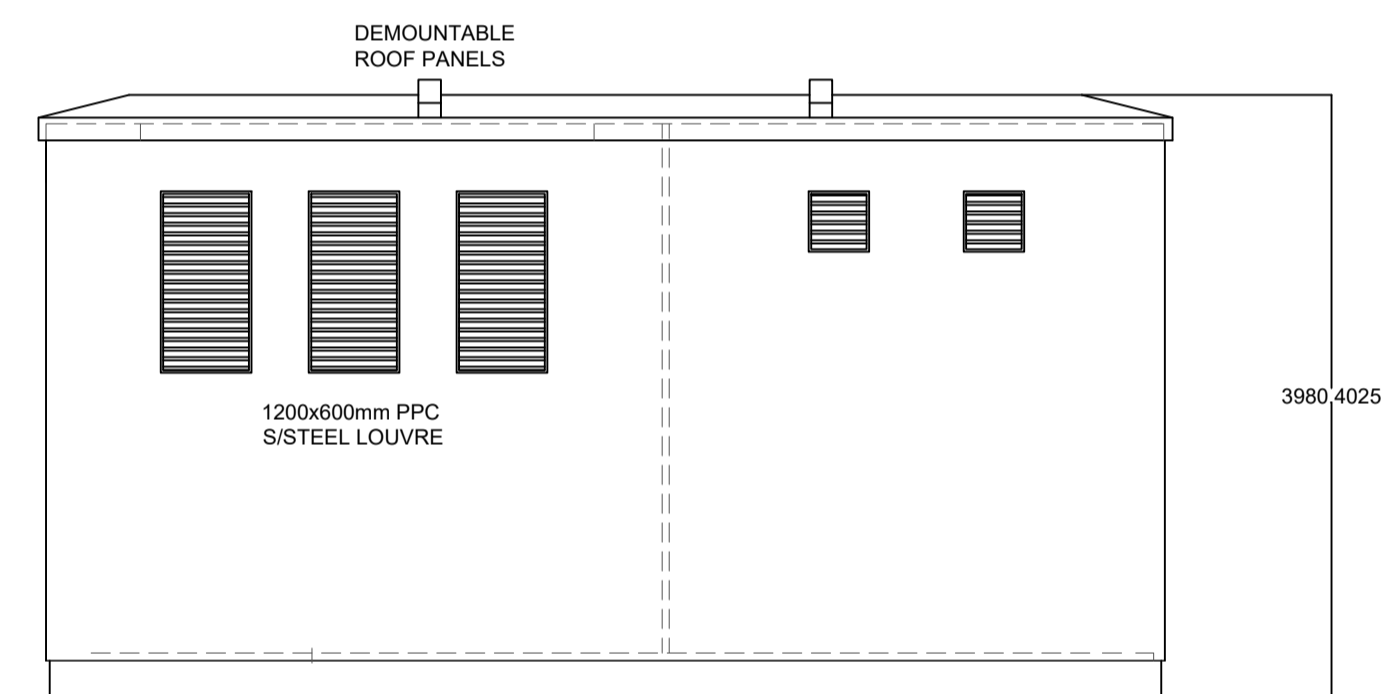


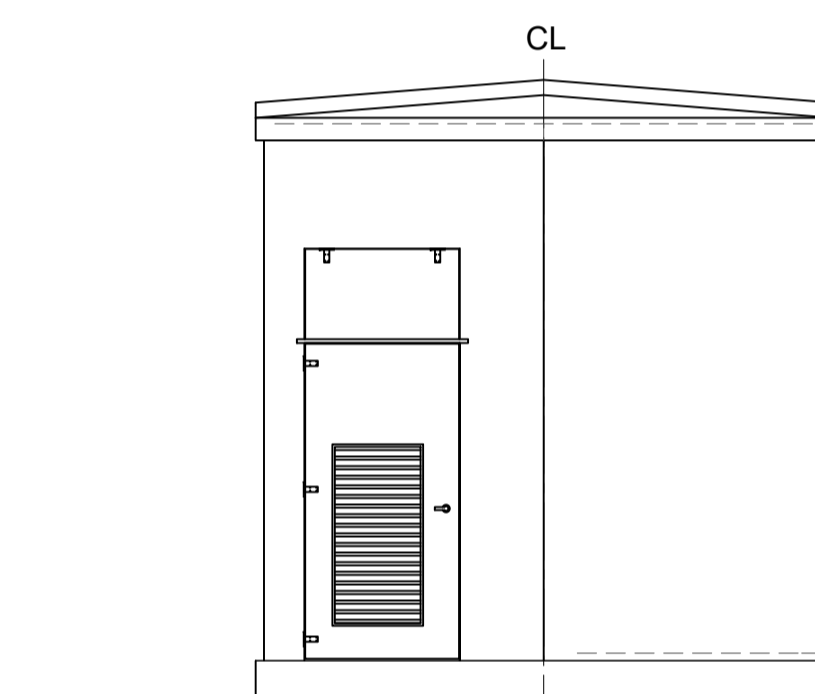
VIEW B



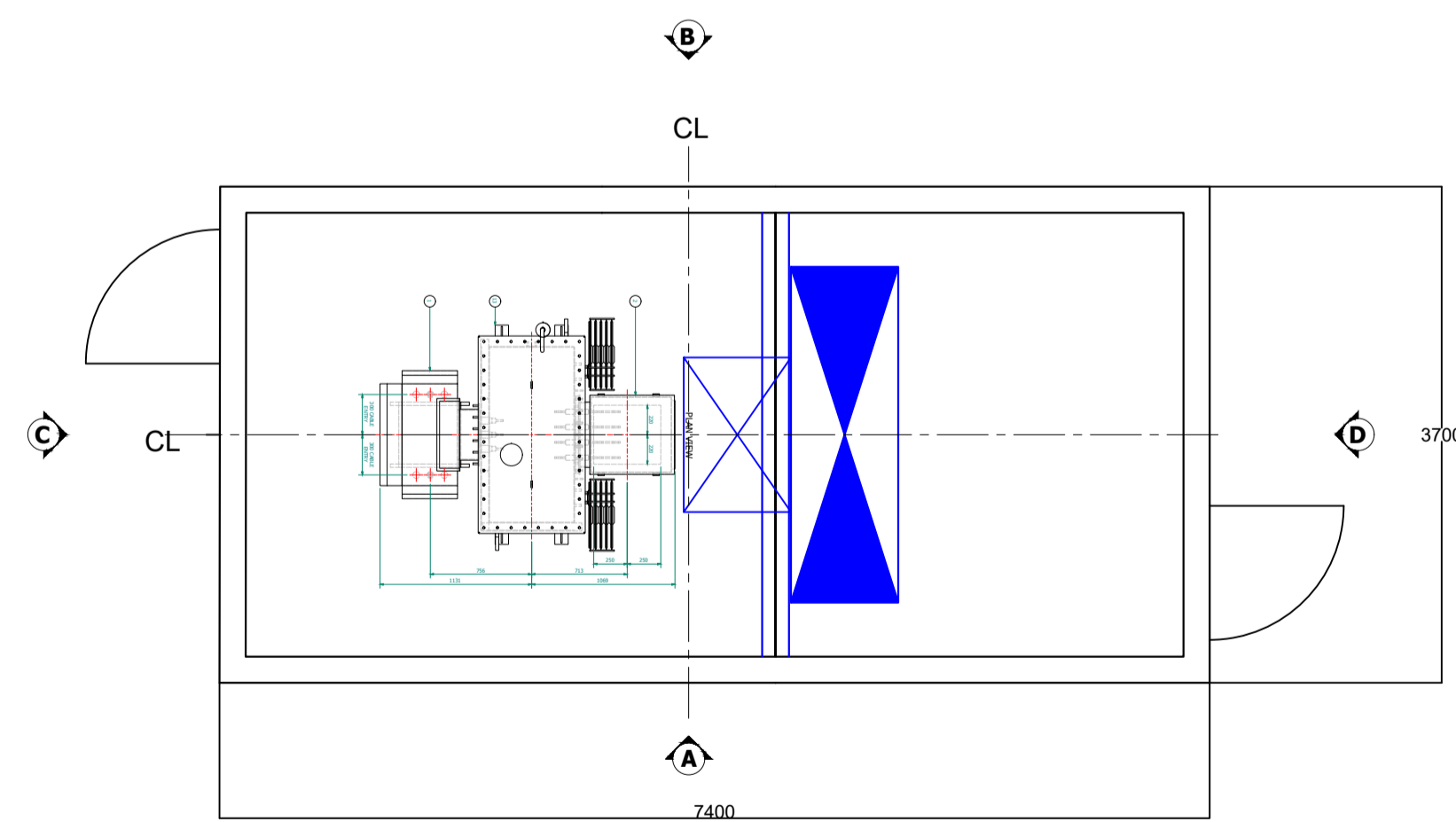
VIEW C



VIEW A



VIEW D



NOTES

1. Do NOT scale from this drawing.
2. All dimensions shown are in millimetres (u.n.o.); All levels shown are in metres (u.n.o.).
3. This drawing is to be read in conjunction with all latest relevant Architect's and Engineer's drawings and specifications.

LEGEND

- HV CABLING
 - RED LINE APPLICATION BOUNDARY (Area: 10,049m², 1.005 Hectare)
 - BLUE LINE SW APPLICATION BOUNDARY
- THE BRIDGE IS LOCATED AT APPROX 266900, 668720

PO1	03/24	PLANNING ISSUE	IM	JR	JR
Rev	Date	Detail	Made	Checked	Approved

Client:

Project: Scottish Water Horizons
The Bridge Steps

Title: Solar PV Car Port
GRP Layout

Design: IM	CAD: IM
Chk'd: JR	App'd: JR
Date: Mar 24	Scale: 1:50@A1

FES Support Services
Forth House
Pinnhill Business Park
Stirling, FK7 8HW
Tel: 01786 819 600
Fax: 01786 811 456



Preliminary Tender Approval Const. As built

No. 58088-90-004

Rev. P01

cm