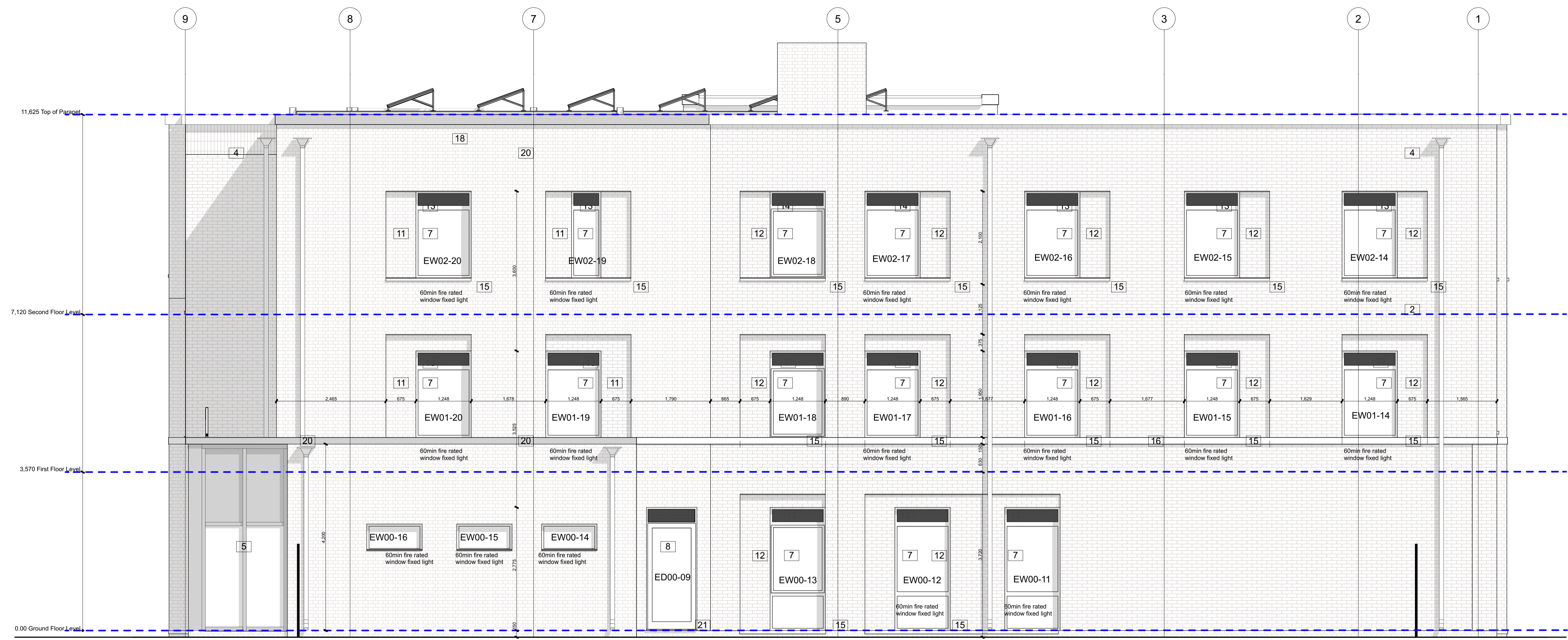


WORK IN PROGRESS

MATERIALS KEY

1. Facing brickwork - English Bond
2. Facing brickwork - Running Bond
3. Soldier Course - Vertical stack bond
4. Feature stone coping
5. Coloured spandrels within extended fin curtain walling
6. Glazing within extended fin curtain walling
7. Grey framed windows
8. Grey glazed doors
9. Vented grey doors
10. Fire exit doors to match spandrels
11. Recessed brick detail - English Bond
12. Recessed brick detail - Running Bond
13. Spandrel panel
14. Vented grill over window
15. Feature stone cill
16. Feature stone band
17. Surface mounted signage
18. Lift overrun
19. Potential services locations
20. Pressed metal coping
21. Pressed metal cill



Proposed East Elevation
1:50

Pl6	12.03.24	Floor levels amended	JB
P5	04.10.23	EW00-14, EW01-19 & EW02-19 redesigned to allow for reception signifier.	SP
Pl4	31.07.23	Updated following fire strategy	JB
P3	21.07.23	Overall roof height amended	JB
P2	18.06.23	Parapet height updated	JB
P1	18.04.23	Drawing number changed	JB
Rev/Date		Description	By



5 Bingham Enterprise Centre, Mersea Court, Bingham, Nottinghamshire, NG13 8JX
01830 21100 | info@anotherkind.com | www.anotherkind.com

JOB TITLE
Newgate Medical Group,
Newgate Street, Worksop S80 1HP

DWG TITLE
Proposed East Elevation

JOB REF-SERIES-DWG NO. REVISION
100345-PRB-XX-XX-DR-A-2102

STATUS
FOR COMMENT

PROJECT NUMBER	SCALE	A1
20-166	1:50	
DRAWN	CHECKED	
JB	JC	

This document and its design content is copyright of Anotherkind Architects Ltd. It shall be used in conjunction with all other associated project documents including models, specifications, schedules and related documents. Do not state from documents. All dimensions to be checked on site. Immediately report any discrepancies, errors or omissions on this document to the Originator. Document to be used only for status noted. If in doubt ASK.