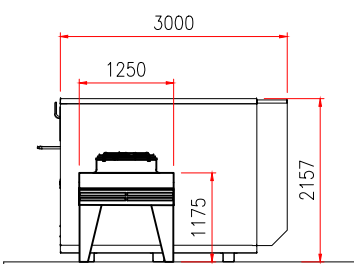


Section A-A'
1:100

Space Eng - LN Gas Cooler
GFHE1.2-137AMg-ZE80.L3
3900mmL x 1250mmW
Dry Weight: Approx 675Kg
30dB(A) @ 10m free field - PFE

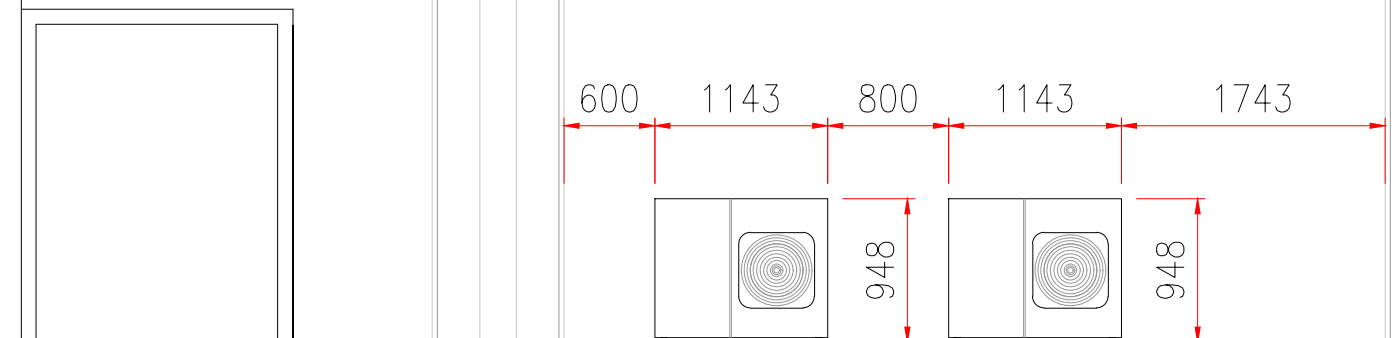
Space Eng - HT CO2 Pack
ECO2 MIDI 3+1 (75Kw Nom)
3000mmL x 1100mmW x 2157mmH
Dry Weight: 2250 Kg
33dB(A) @ 10m free field



Section B-B
1:100

Space Eng - LN Gas Cooler
GFHE1.2-137AMg-ZE80.L3
3900mmL x 1250mmW
Dry Weight: Approx 675Kg
30dB(A) @ 10m free field - PFE

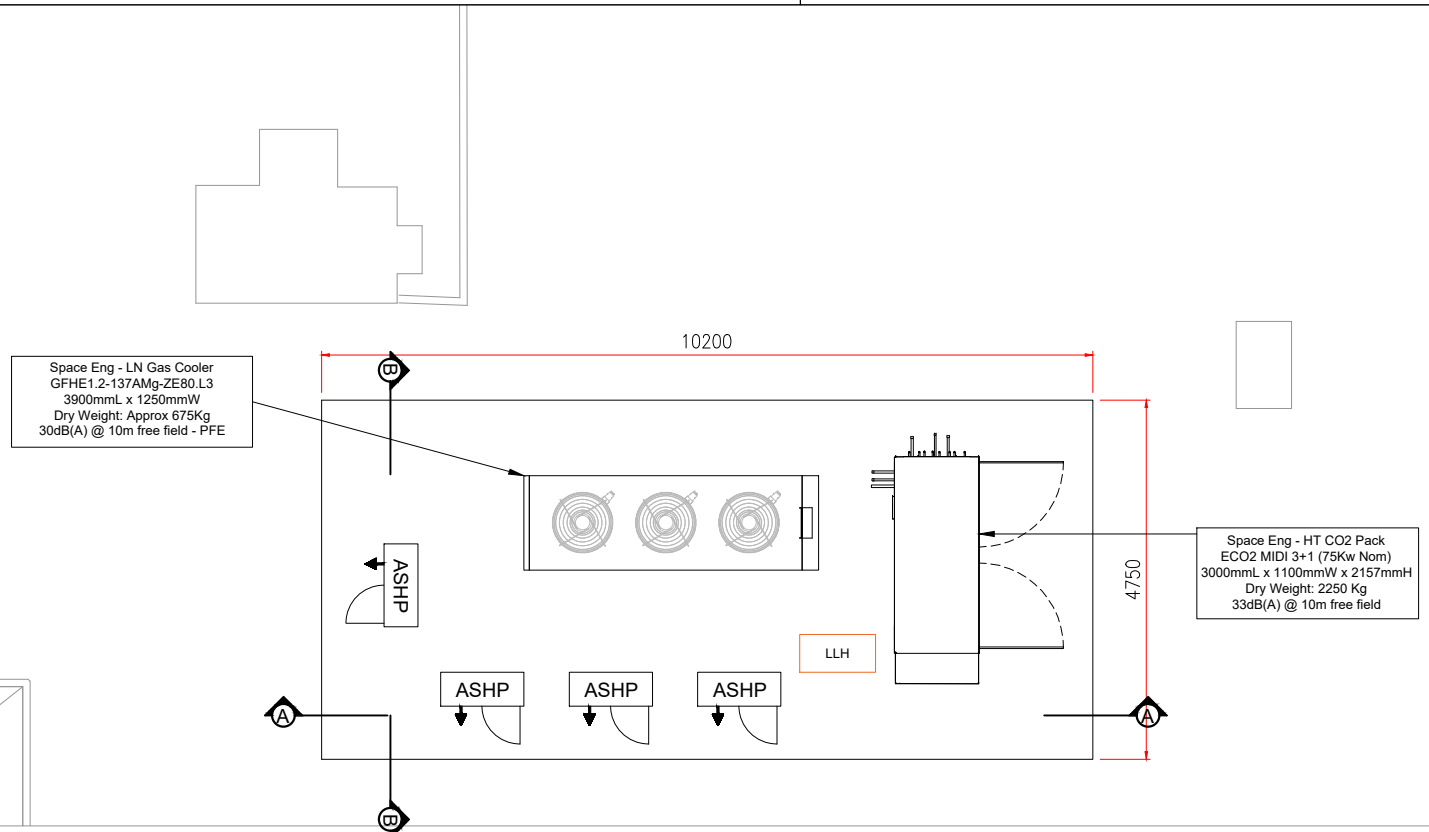
Space Eng - HT CO2 Pack
ECO2 MIDI 3+1 (75Kw Nom)
3000mmL x 1100mmW x 2157mmH
Dry Weight: 2250 Kg
33dB(A) @ 10m free field



Section C-C
1:50

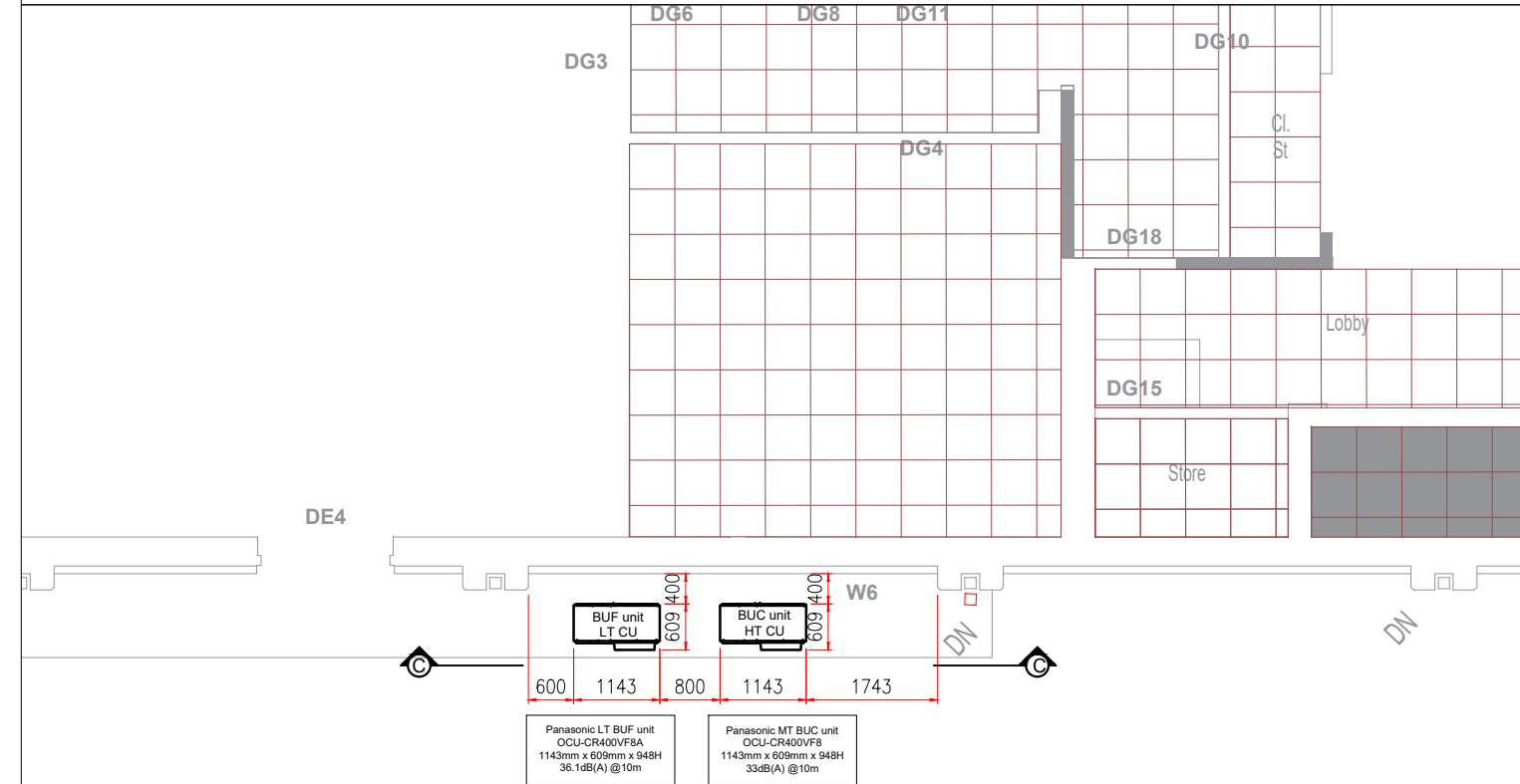
Panasonic LT BUF unit
OCU-CR400VF8A
1143mm x 609mm x 948H
36.1dB(A) @10m

Panasonic MT BUC unit
OCU-CR400VF8
1143mm x 609mm x 948H
33dB(A) @10m



Space Eng - LN Gas Cooler
GFHE1.2-137AMg-ZE80.L3
3900mmL x 1250mmW
Dry Weight: Approx 675Kg
30dB(A) @ 10m free field - PFE

Space Eng - HT CO2 Pack
ECO2 MIDI 3+1 (75Kw Nom)
3000mmL x 1100mmW x 2157mmH
Dry Weight: 2250 Kg
33dB(A) @ 10m free field



Panasonic LT BUF unit
OCU-CR400VF8A
1143mm x 609mm x 948H
36.1dB(A) @10m

Panasonic MT BUC unit
OCU-CR400VF8
1143mm x 609mm x 948H
33dB(A) @10m

Copyright of K2 Engineering (Cooling) Ltd. Drawings are not to be reproduced in whole or in part without the prior written permission of K2 Engineering (Cooling) Ltd. Do not scale, figured dimensions to be taken from this drawing only. All dimensions are in millimeters unless otherwise stated and to be verified on site before proceeding with work. Any discrepancies to be notified in writing to K2 Engineering (Cooling) Ltd immediately.

CLIENT
ALDI Stores Ltd



REVISIONS				
REV.	DESCRIPTION	DRAWN	APPD.	DATE
-	Original issue.	A.A.	R.P.	22-02-2024
A	Condensing Unit plant added.	A.A.	R.P.	21-03-2024

PROJECT			
Bristol, Portishead #35			
DRAWING TITLE			
Plant Compound			
DRAWING NUMBER	Rev	SCALE	SHEET SIZE
2989-R6	A	1:100	A3
STATUS			
INFORMATION			

K2 Engineering (Cooling) Ltd
Specialists in Refrigeration and Air Conditioning

K2 Engineering (Cooling) Ltd
2 The Parade
Brighton Road
Burgh Heath, Surrey
KT20 6AT

Tel: +44 (0) 20 8394 0900
Email: david@k2cooling.com