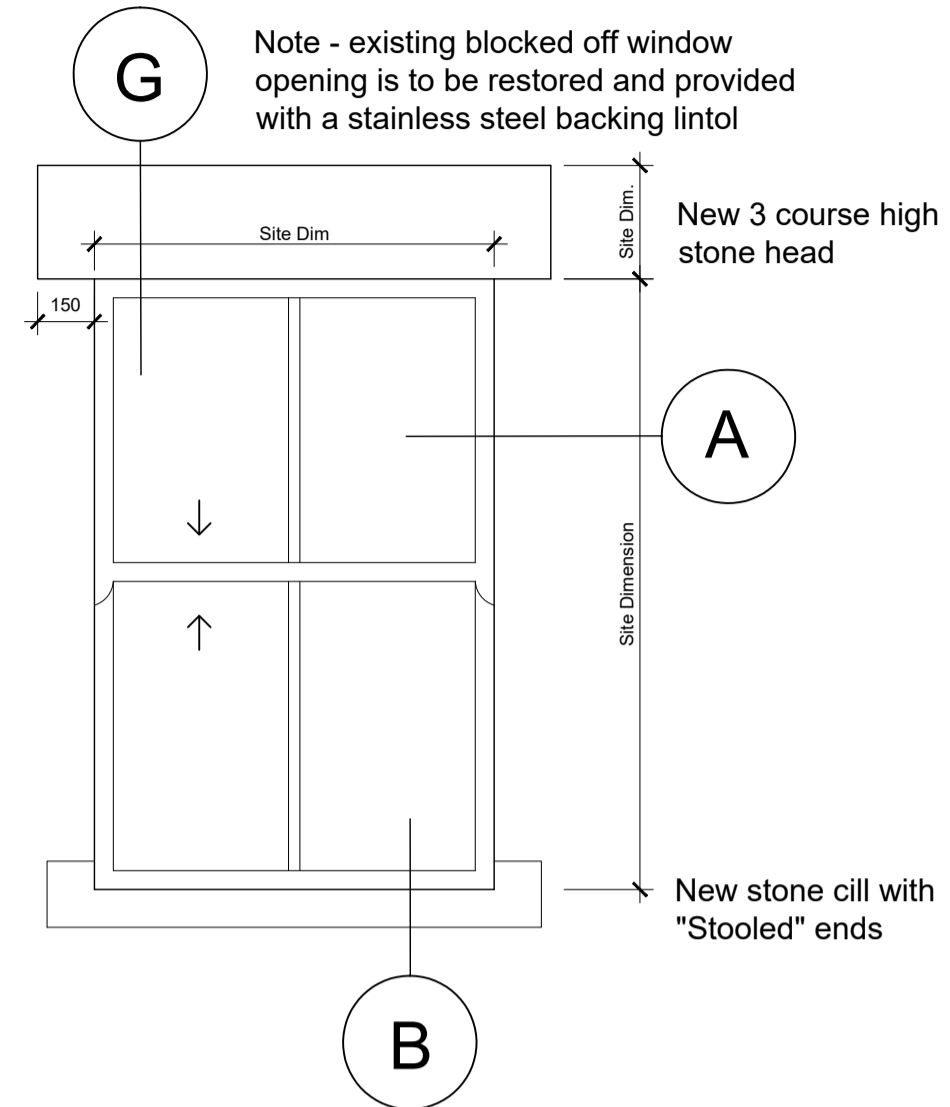
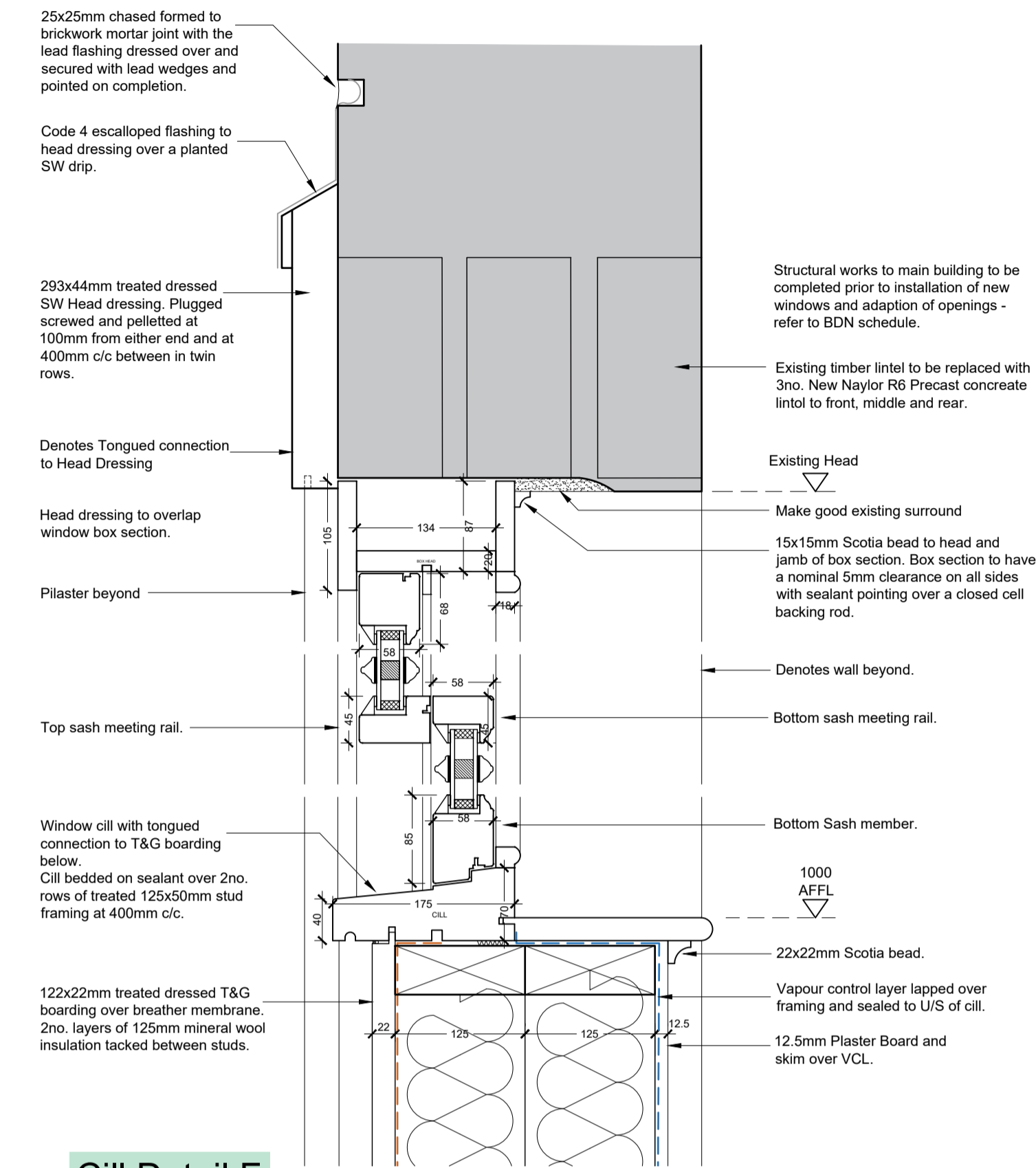


**Replacement Second Floor Window : Scale 1:20@A1**



**Window Details : Scale 1:5@A1**

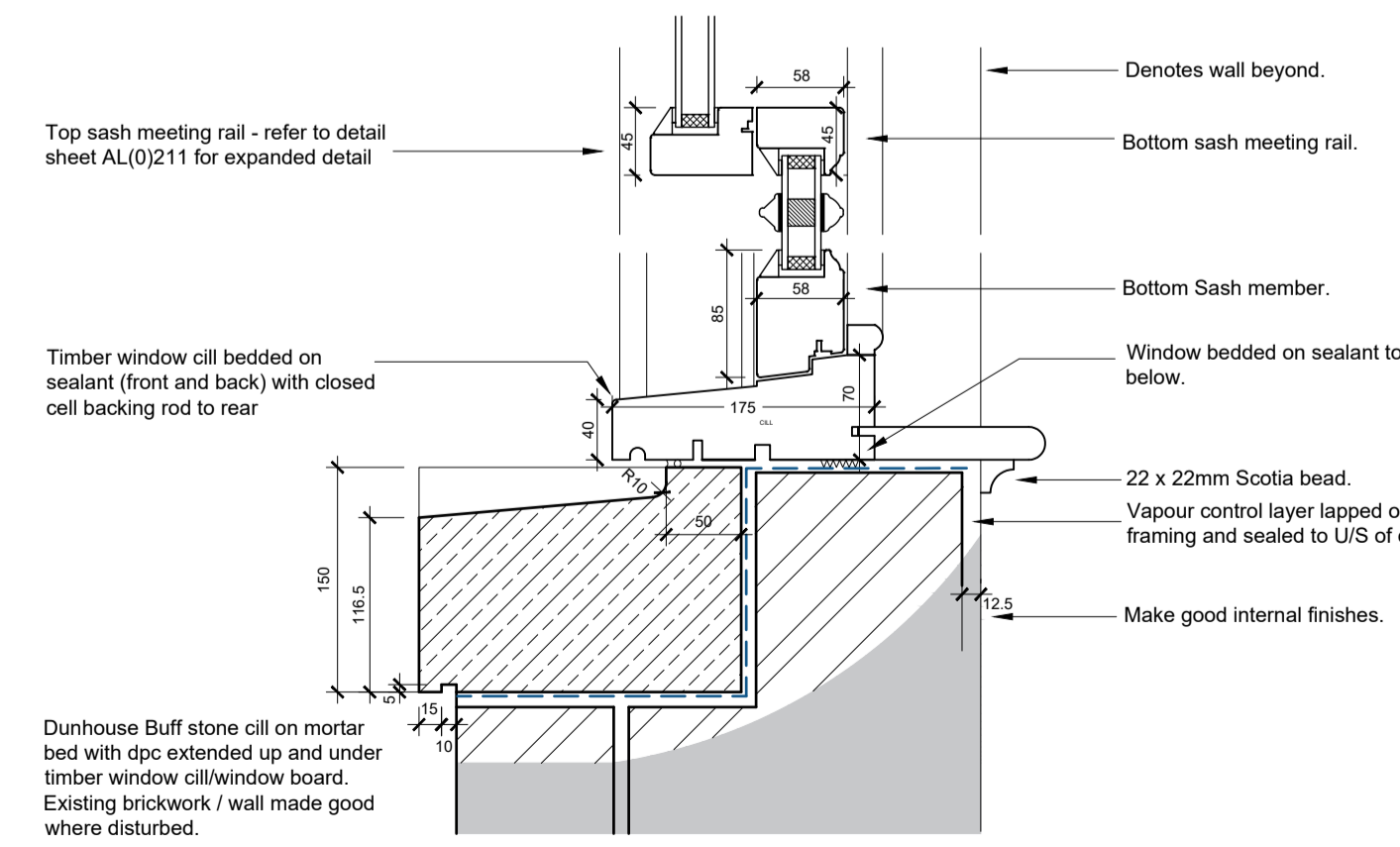
**Head Detail C**



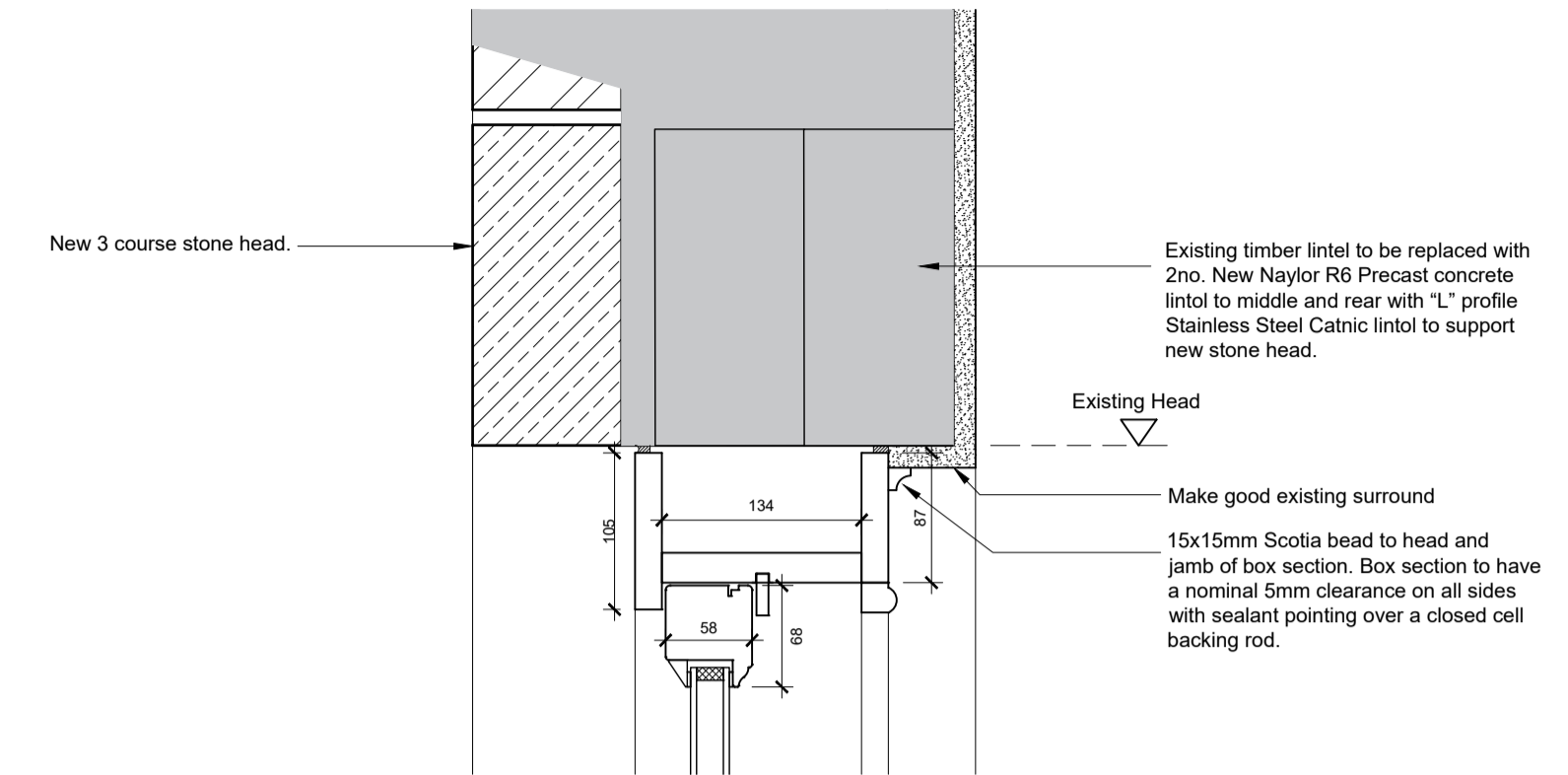
**Cill Detail F**

**NOTE:**  
Contractor to provide shop drawing for approval by HAZ / CAG's team prior to manufacture.  
Contractor to take site dimensions prior to production of shop drawings.  
High Performance Vertical Sliding Sash Timber windows.  
New High Performance VSS Specification

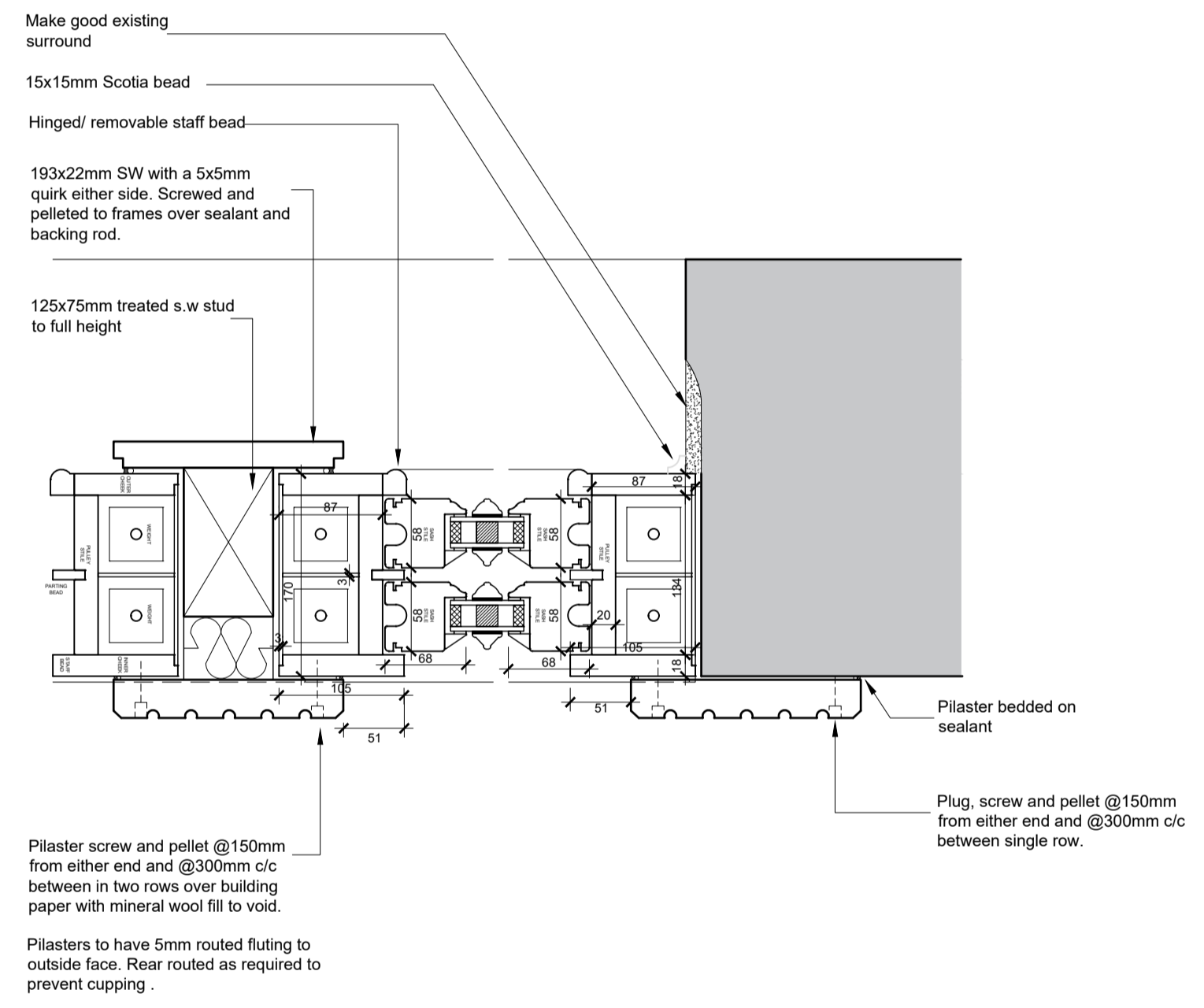
- High Performance Factory Glazed and Painted windows
- Sapele Hardwood treated in accordance with Teknos recommendations
- Glazing is 28mm 6 / 16 / 8.8 Acc Lam "Low E" Argon filled Toughened double glazed units to ENBS1279 part 3 factory fitted
- Brass catches, sash lifts and restrictors to all opening windows
- Radiused Polished Pulleys with traditional cords and steel weights
- High Performance draught seals tested and approved to BS6375 Part 1
- Factory applied Water based micro porous paint finish



**Cill Detail B**

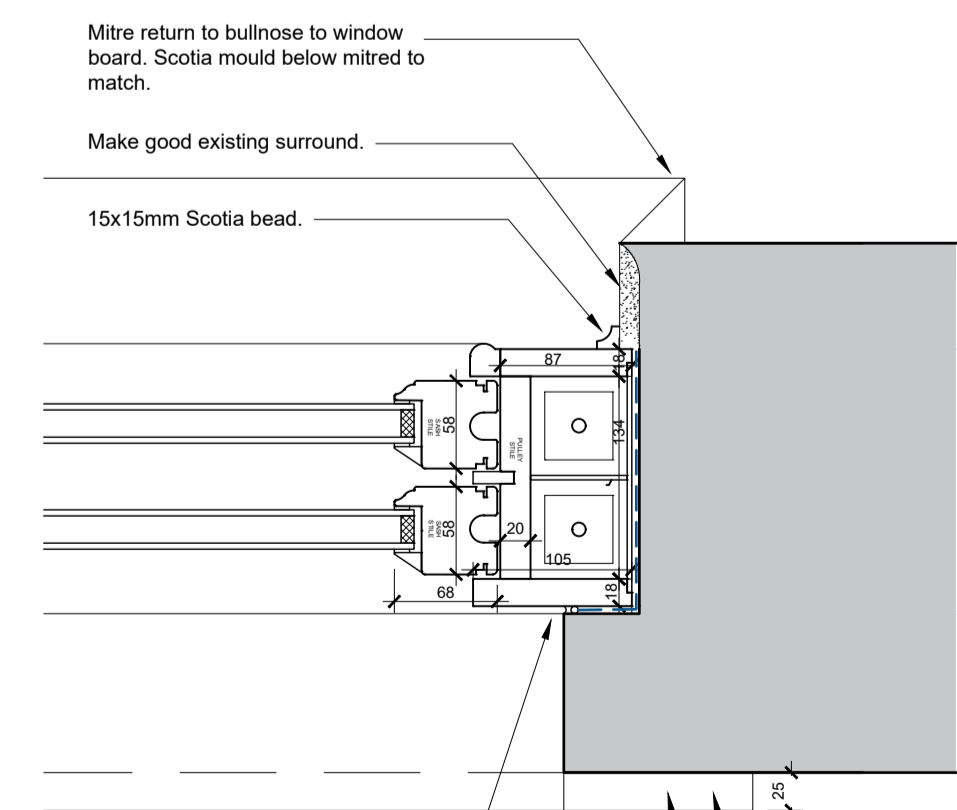


**Head Detail G**



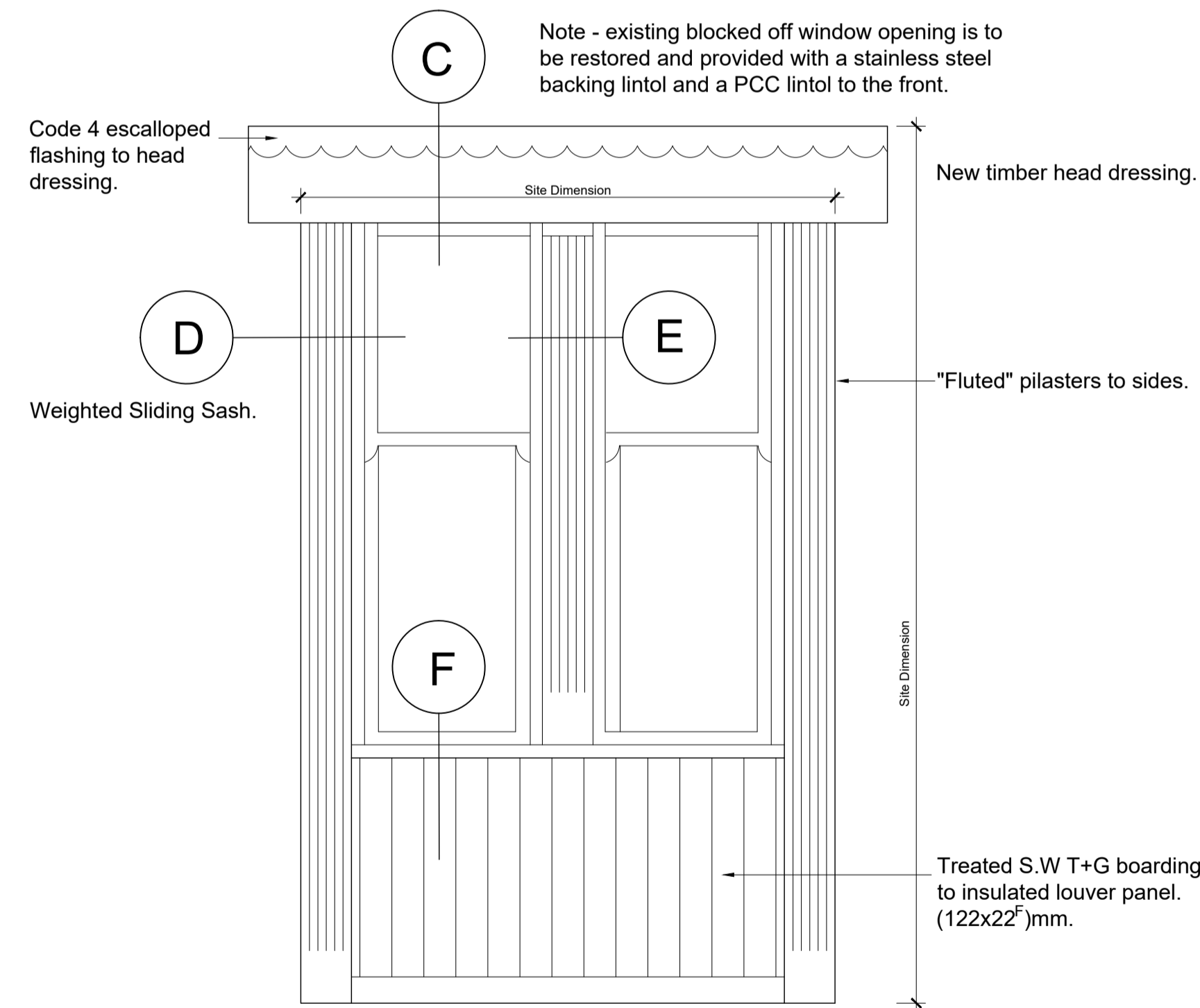
**Mullion Detail E**

**Jamb Detail D**



**Jamb Detail A**

**Replacement First Floor Window : Scale 1:5@A1**



**Cill Detail B**

**Notes:**  
OS Licence No: 10006354  
All dimensions to be checked on site.  
DO NOT SCALE FROM DRAWING.  
Discrepancies ambiguities and/or omissions between this drawing and information given elsewhere must be reported immediately to the architect before proceeding.  
**THIS DRAWING IS COPYRIGHT.**  
This drawing is to be read in conjunction with drawings:-

|     |    |    |            |   |
|-----|----|----|------------|---|
| 2   | GD | MG | 06/12/2022 | Updated as per planning drawings & Tender Issue |
| Rev | C  | R  | Date       | AMENDMENT                                       |

**NAPPER**  
info@napperarchitects.co.uk www.napperarchitects.co.uk  
Napper Architects Ltd  
3 Waterloo Square  
Newcastle upon Tyne  
NE1 4DR  
Tel: 0191 2610491  
First Floor, 6 Bakers Yard  
London  
EC1R 3DD  
Tel: 0203 9066814

|  |              |
|--|--------------|
| Project : 68 Bond Foregate (Heritage Action Zone). |              |
| Client : Mr Paul Challis.                          |              |
| Scale :  | 1:20, 1:5@A1 |
| Internal Project No :                              | 191018       |
| Drawn :  | MJG          |
| Rev :  | 2            |
| Drawing Number : 191018 -NAP-XX-XX-DR-A-31000      |              |