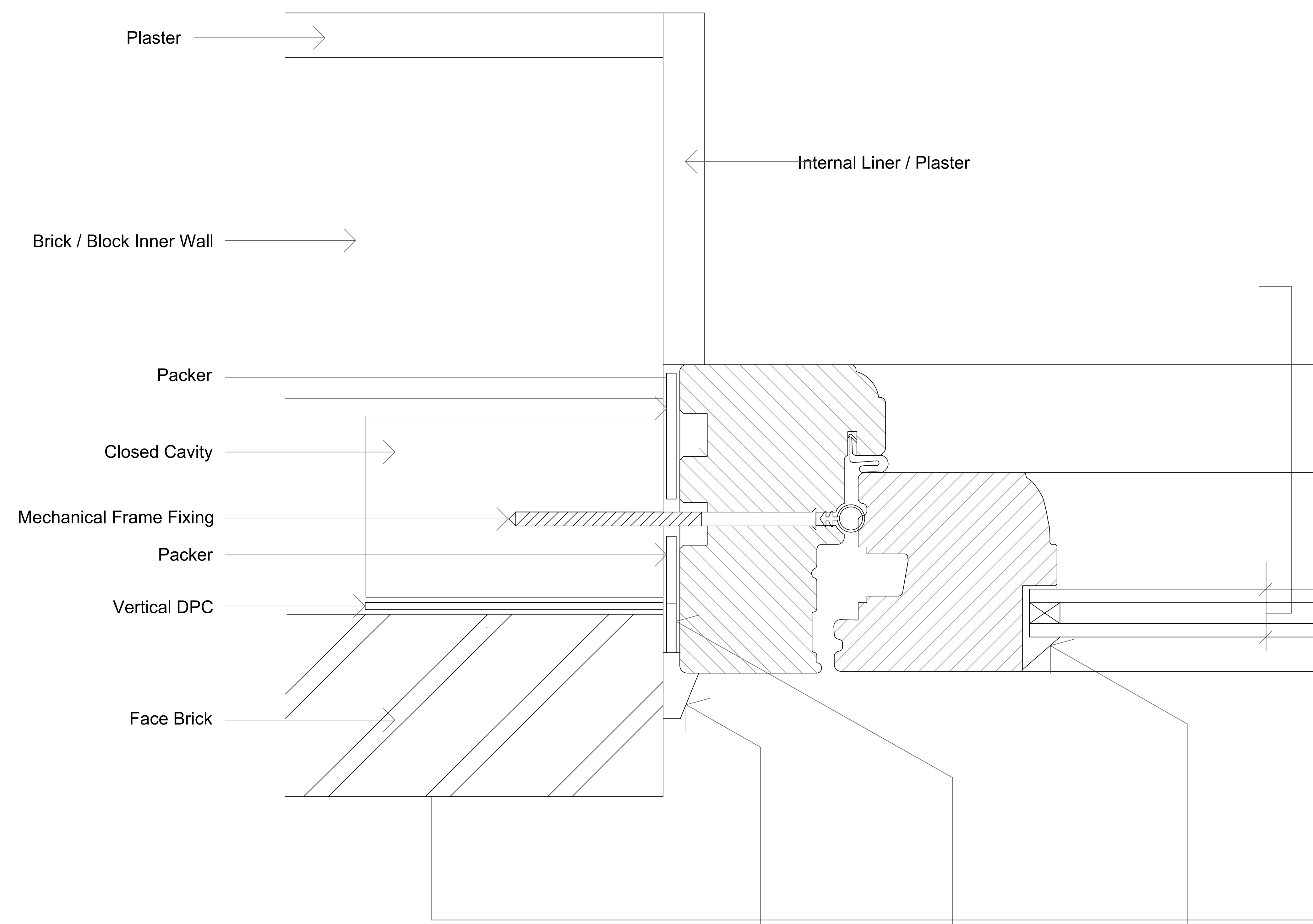


Typical Window Frame Detail



Typical Window Specification

Flush Casement Window in Meranti Engineered Hardwood

Head Frame Size : 60mm

Materials: Meranti Engineered Hardwood Timber

Colour : Painted to RAL 9003 White

Glazing Bars: 22mm True Bar

Glazing Features : Horizontal Astragal Bars

Glass Type: Clear 14mm Super Slim Double Glazed Unit 4mm ANL / 6mm Krypton / 4mm LowE (Putty Glazed)

Feature Mouldings: Ovolo

Cill: 165mm x 38mm New Painted Hardwood

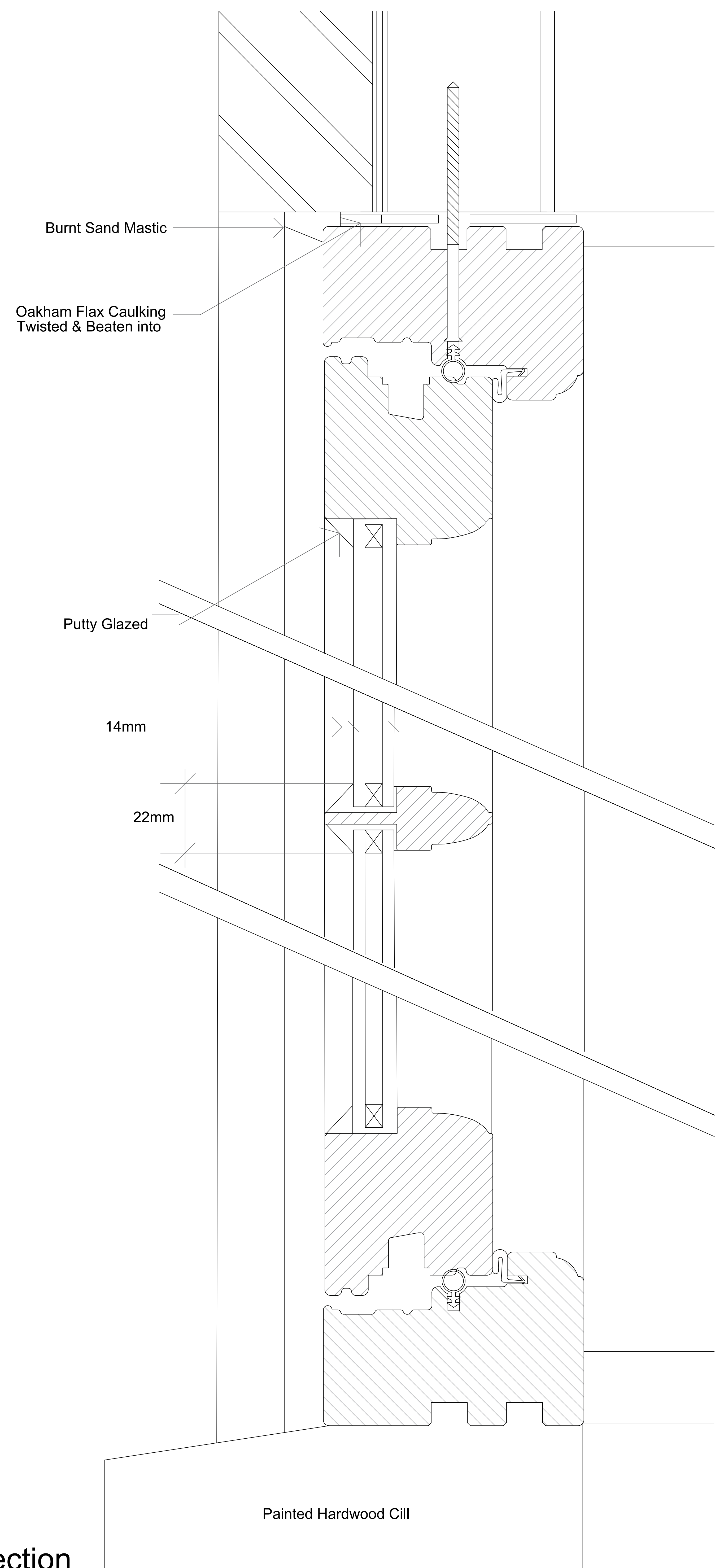
Fixings: Mechanically Fixed, Oakham Flax Caulking with Burnt Sand Mastic Bead Between Brickwork & New Timber window frames

Ironmongery: Monkeytail Handle & Peg Stay. Finished in Black

Full Size Frame Details

Typical Window Frame Detail

Burnt Sand Mastic
Oakham Flax Caulking Twisted & Beaten into Joint
Putty Glazed



Typical Window Vertical Section

© Copyright

Client
SG Thompson

Project Title
Dean Cottage
Dippenhall Street
Crandall
Farnham
Surrey GU10 5NY

Drawing Title
Typical Full Size
Window Frame
Horizontal &
Vertical Section

Scale
1:1 @ A0

Date
15.03.2024

Drawn
ST

Checked

Drawing No.	Floor	Detail	Revision
N040	0	TWF	