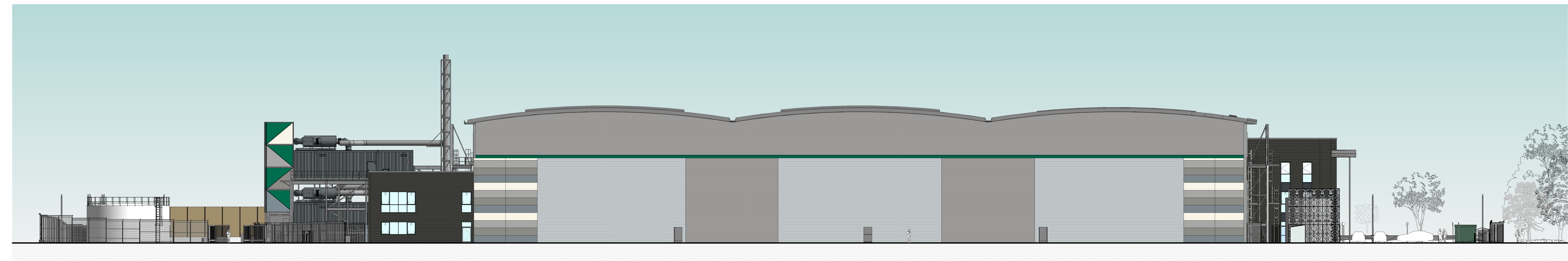


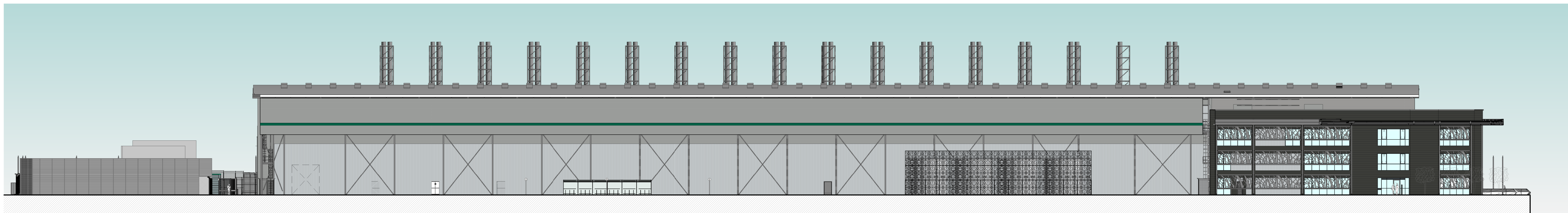
1 NE ELEVATION
1:250



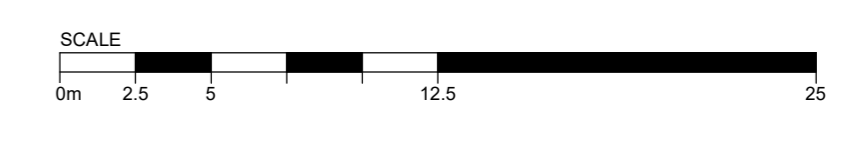
2 NW ELEVATION
1:250



3 SE ELEVATION
1:250



4 SW ELEVATION
1:250



NOTE:
Careful consideration has been given to the choice of materials and elevation detailing to screen the generators and water tanks and was discussed and agreed through pre-application discussions with DBC. The proposed materials are inspired by the existing materials. The screening of the water tanks at the corner of Maylands Avenue and Breakspear Way replicates the design and material used of the office block and the generator radiator ducts will be screened with green, white and grey expanded metal mesh.
The design approach has been supported by DBC during the pre-application process and responds positively to the principles set out in the Maylands Gateway Development Brief.

P05	14/03/24	Revised for NMA application
P04	25/05/22	Revised Planning Drawing
P03	25/03/22	Revised for Outline Pre-Application
P02	19/11/21	Issue For Planning Pre-Application
P01	09/12/21	Issue For Planning Pre-Application WIP
Issue	Date	Created By Checked By Approved By

ARUP

8 Finsbury Street
London EC2A 4BE
Tel +44 (0)20 7591 1311 Fax +44 (0)20 7580 3924
www.arup.com

Client
TPD Development LLC

Project Title
3A Blossom Way Hemel Hempstead Hertfordshire

Drawing Title
Proposed Colour Building Elevations

Scale of A0 1:250 By CHN / Appd TLM/MRA
Disc Architecture
Status SO - Initial Status
Arup Job No 284474 Rev P05
ID 284474-ARP-01-XX-DR-A-04000