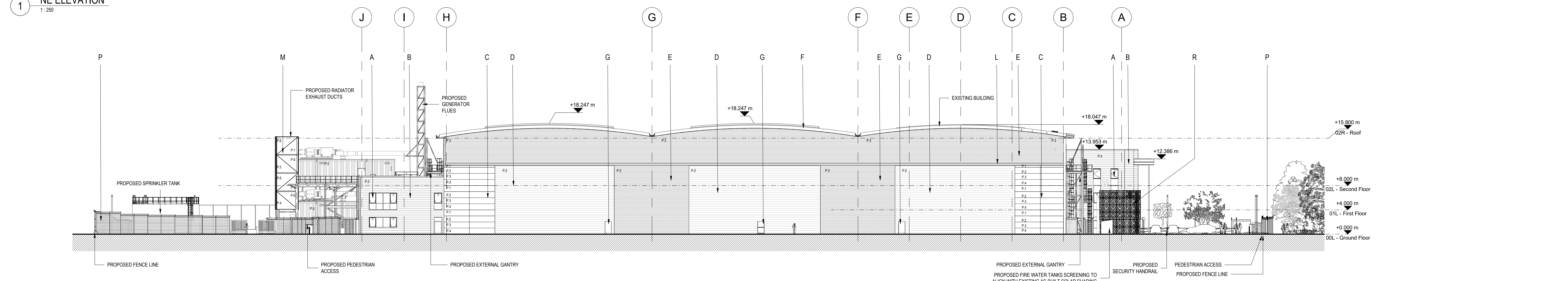
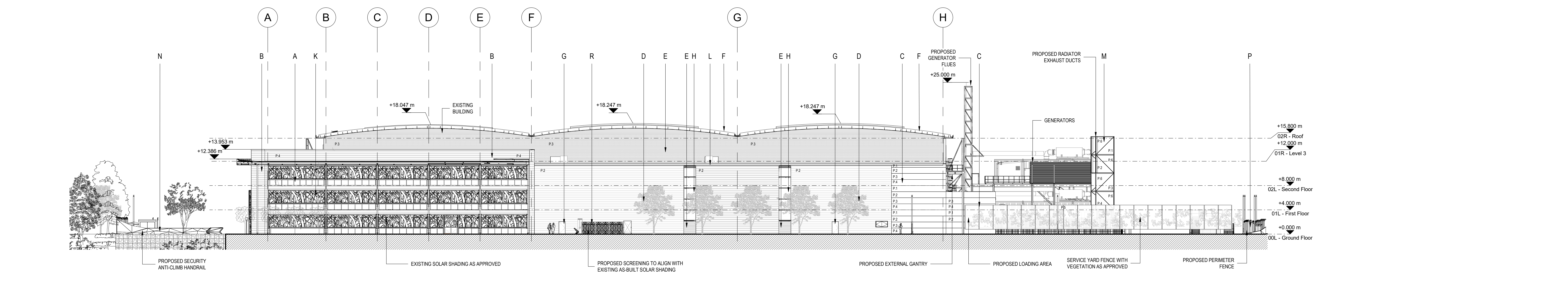


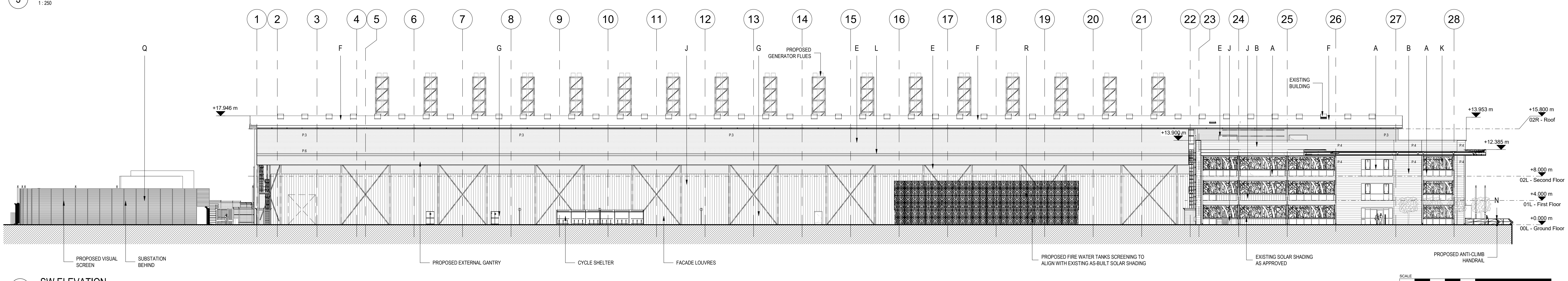
1 NE ELEVATION  
1:250



2 NW ELEVATION  
1:250



3 SE ELEVATION  
1:250



4 SW ELEVATION  
1:250

**NOTE:**  
Careful consideration has been given to the choice of materials and elevation detailing to screen the generators and water tanks and was discussed and agreed through pre-application discussions with DBC. The proposed materials are inspired by the existing materials. The screening of the water tanks at the corner of Maylands Avenue and Breakspoor Way replicates the design and material used of the office block and the generator radiator ducts will be screened with green, white and grey expanded metal mesh.  
The design approach has been supported by DBC during the pre-application process and responds positively to the principles set out in the Maylands Gateway Development Brief.

**CLADDING COLOUR LEGEND**

P.1	PRISMA WHITE RAL 9010
P.2	SIRIUS RAL 9005
P.3	ORION RAL 9007
P.4	ZEUS
P.5	GENERATOR RAL 7012
P.6	TURQUOISE GREEN RAL 6016

- A. General external glazing.** Clear & spandrel (Zeus RAL 7016), sunroof toughened glass in polyester powder coated aluminum curtain walling system colour RAL 7016. "As approved in previous application 40192219/MF/A"
- B. Flat metal cladding.** Prime SFX rainscreen cladding system laid horizontal Prisma Zeus. "As approved in previous application 40192219/MF/A"
- C. Wall Cladding 1.** Rockwool insulated flat metal composite trim panels with pre-formed corners. Horizontally laid 1000mm wide. Colour: Prisma White RAL 9010, Sirius RAL 9005, Orion RAL 9007 and Zeus. "As approved in previous application 40192219/MF/A"
- D. Wall Cladding 2.** Fully insulated halfround built up cladding laid horizontally. Colourcoat Prisma Sirius. "As approved in previous application 40192219/MF/A"
- E. Wall Cladding 3.** Fully insulated sinusoidal built up cladding laid horizontally. Colourcoat Prisma Orion. "As approved in previous application 40192219/MF/A"
- F. Roof.** Non-flagile thin-thin® (Cerberus) system assembly. Colourcoat HPS200 colour. Adaltes. "As approved in previous application 40192219/MF/A"
- G. Personnel & Fire Exit doors.** Coated steel door to match adjacent cladding. "As approved in previous application 40192219/MF/A"
- H. Translucent Wall system.** Modular polycarbonate translucent panel cladding system. "As approved in previous application 40192219/MF/A"
- I. Loading Doors.** Sluico finished aluminium. Finish PPC Sirius RAL 9008. "As approved in previous application 40192219/MF/A"
- J. Louvers.** QEF 50 curved blade louvre (Vertical)
- K. Solar shading.** Bespoke polyester powder coated aluminium sheet colour RAL 9016. "As approved in previous application 40192219/MF/A"
- L. Roof Fascia & Horizontal Feature Band.** Secret fixed fascia. HPS200 Ultra Colour. Green RAL 6016. "As approved in previous application 40192219/MF/A"
- M. PPC green, white and grey expanded metal mesh.** Metal panels fixed to generator exhaust stack structure. Refer to Cladding legend for RAL colour.
- N. Security Anti-climb Handrail.** Ballustrade and handrail system to corner of Admin Block terrace area. With expanded metal mesh panels. Finish to be RAL 9006.
- P. Perimeter Security Fence.** Metal post and rail, mesh fencing. Light grey finish.
- Q. Substation Screening.** Screening to act as screening to sub-station area. Light grey finish.
- R. Water Tank & Condenser Screening.** Bespoke PPC aluminium sheet colour to match existing solar shading RAL 9006.

POB	14/03/24	Revised for NMA application		
POC	27/03/22	Revised Planning Drawing		
POA	25/05/22	Revised Planning Drawing		
POI	25/03/22	Revised for Planning Application		
Issue	Date	Created By	Checked By	Approved By

**ARUP**

8 Finsbury Street  
London EC2A 3DU  
Tel +44 (0)20 7801 1311 Fax +44 (0)20 7880 3924  
www.arup.com

Client  
**TPD Development LLC**

Project Title  
**3A Blossom Way Hemel Hempstead Hertfordshire**

Drawing Title  
**Proposed Building Elevations**

Scale of AD  
As indicated

By  
C/MK / A/SP  
T/L/M/M/R/A

Date  
28/4/24

Rev  
P06

ID  
**284474-AR-01-XX-DR-A-04001**