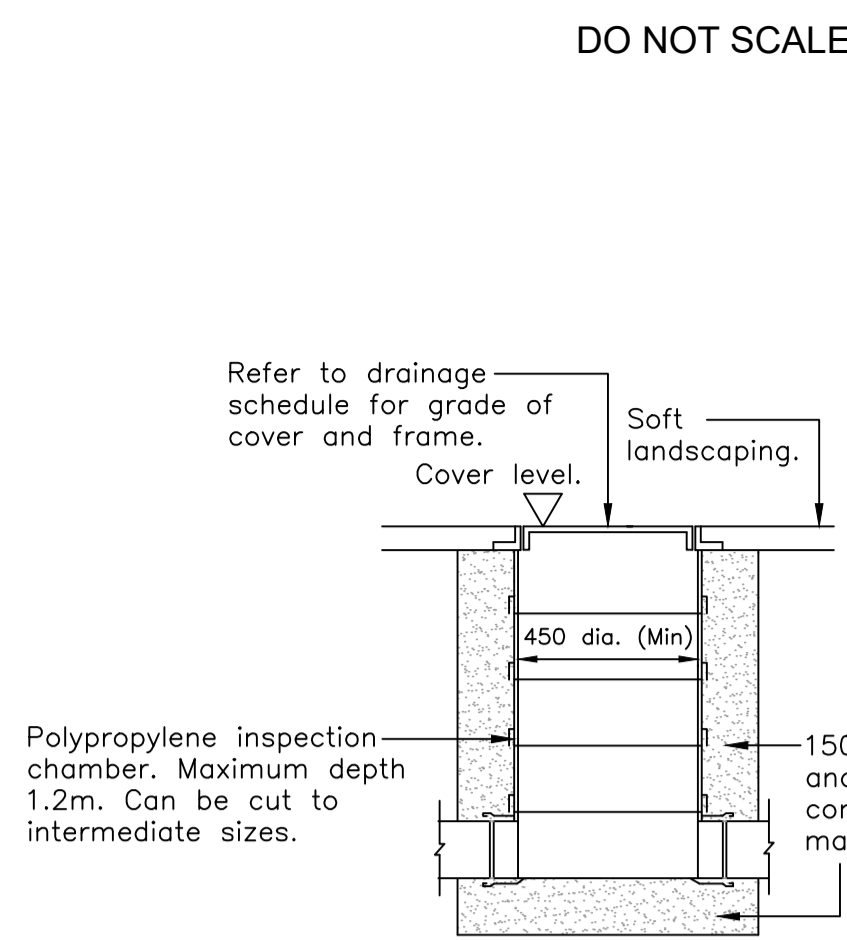
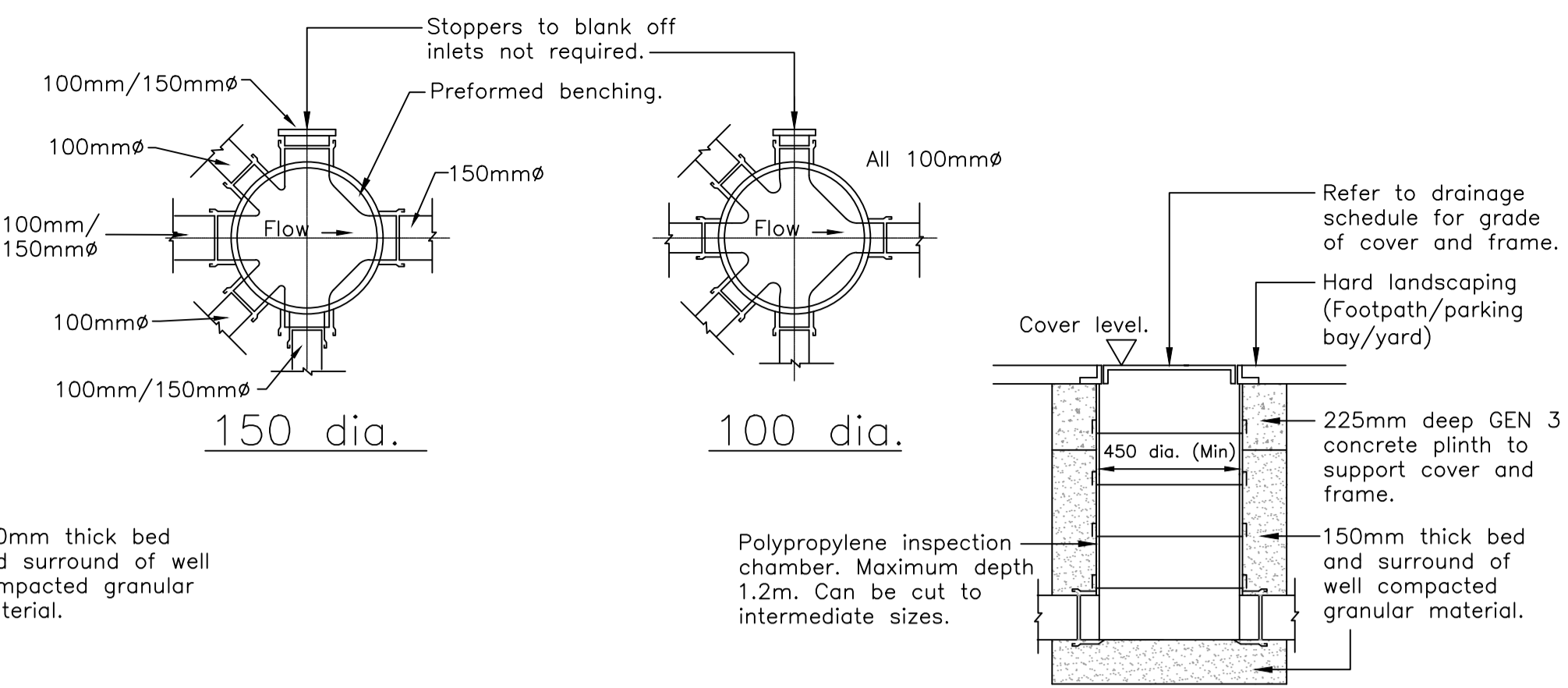


Class S Granular Surround  
 Class Z Concrete surround  
 PIPE BEDDING DETAILS



UIC SITED IN SOFT LANDSCAPING

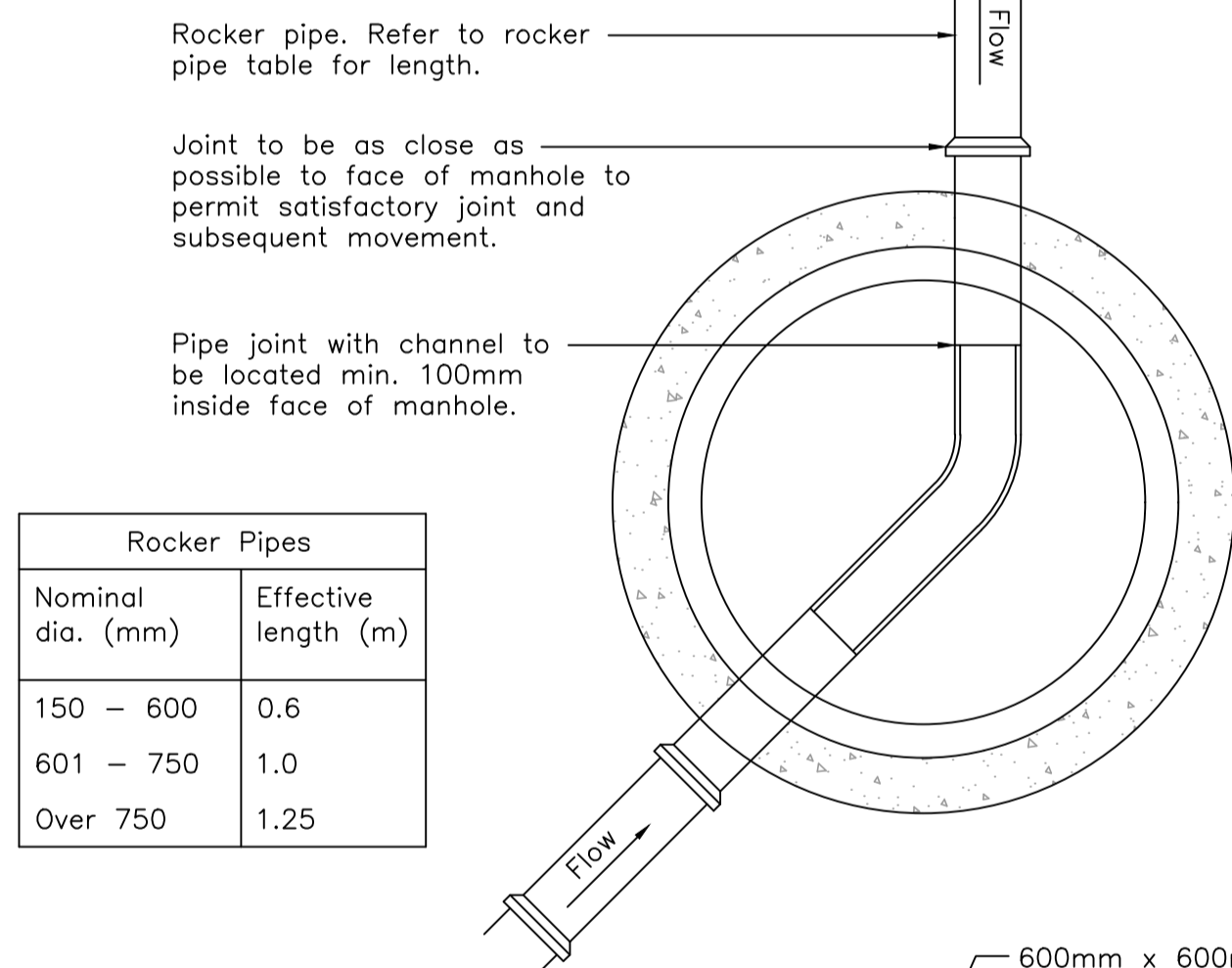


UIC SITED IN HARD LANDSCAPING

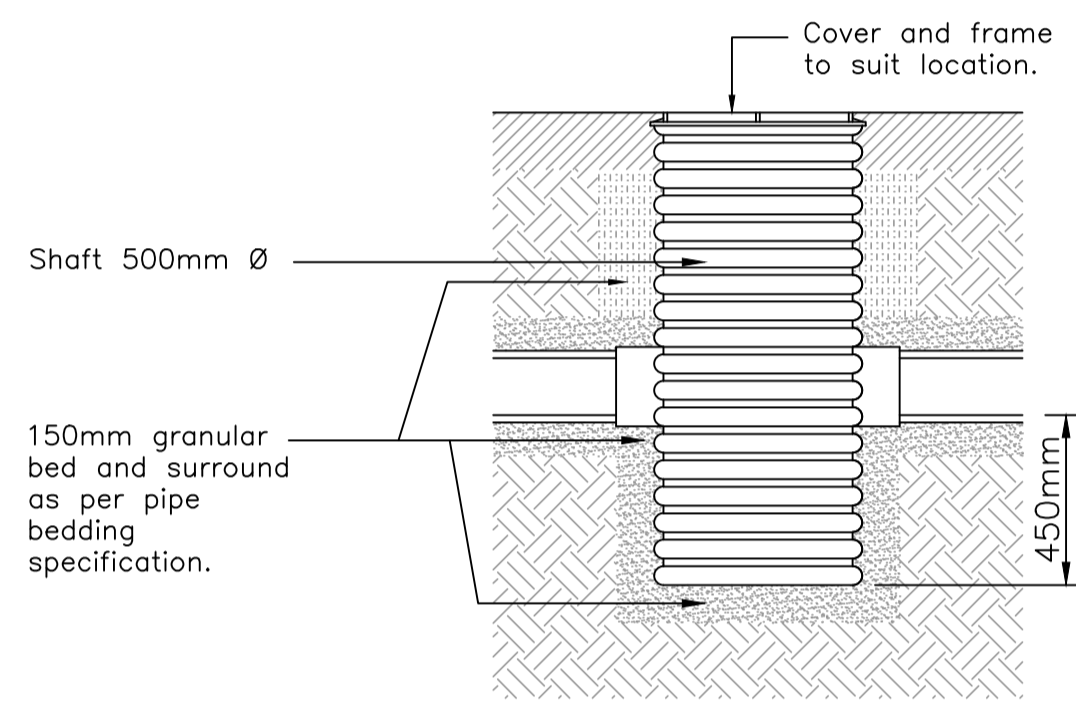
UNIVERSAL INSPECTION CHAMBER (UIC) – POLYPROPYLENE

Max. Depth from cover level to invert of pipe 1.2m

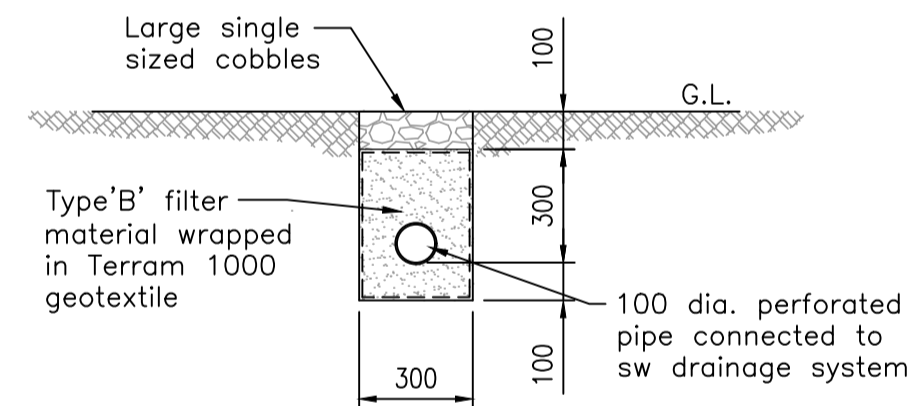
Manhole Diameters	
Diameter of largest pipe in manhole (mm)	Internal diameter of manhole (mm)
Less than 300	1200
375 – 450	1350
500 – 700	1500
750 – 900	1800
Greater than 900	Consult Undertaker



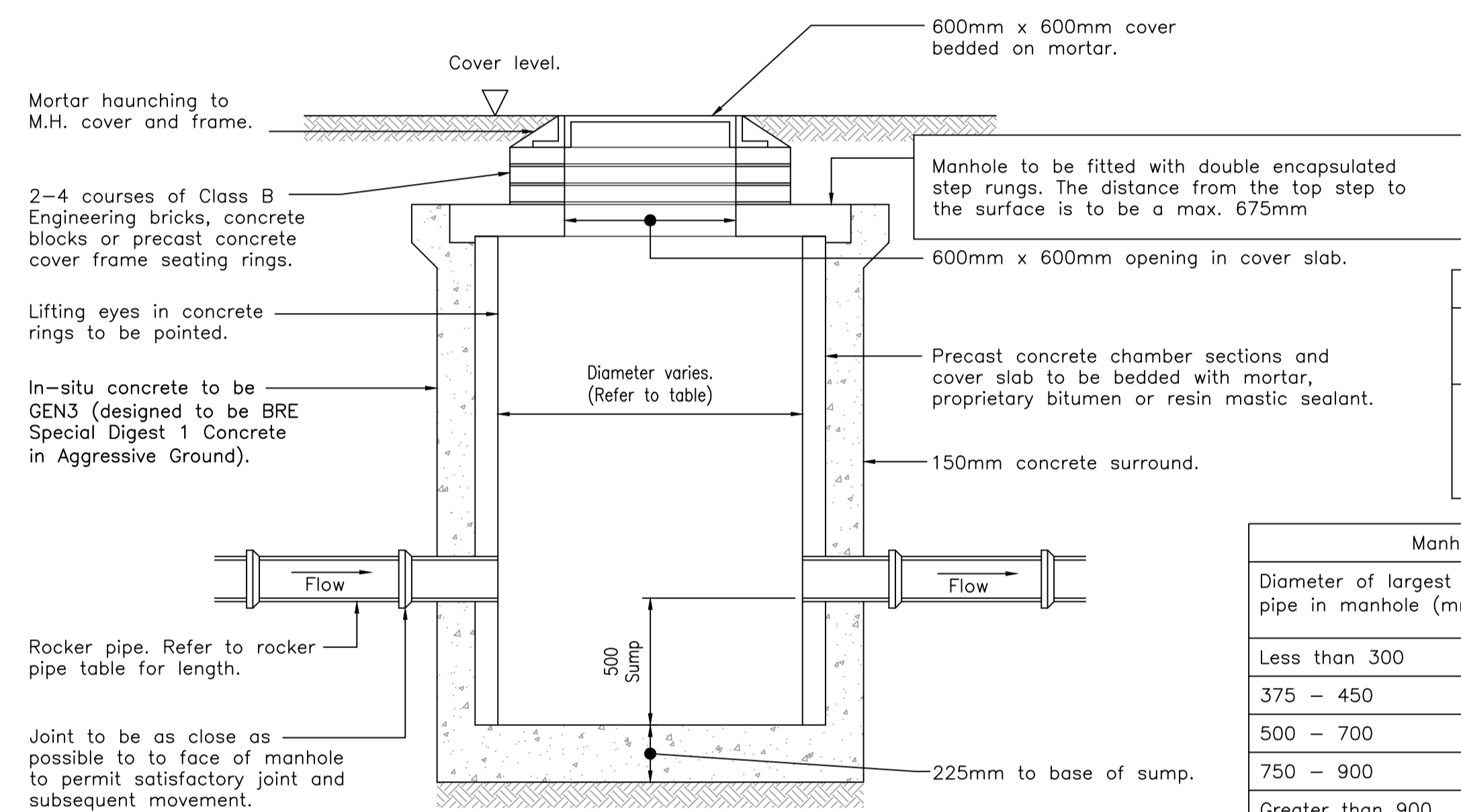
Rocker Pipes	
Nominal dia. (mm)	Effective length (m)
150 – 600	0.6
601 – 750	1.0
Over 750	1.25



SILT TRAP WITHIN SOFT LANDSCAPE  
 N.B TO BE INSTALLED TO MANUFACTURES SPECIFICATION.



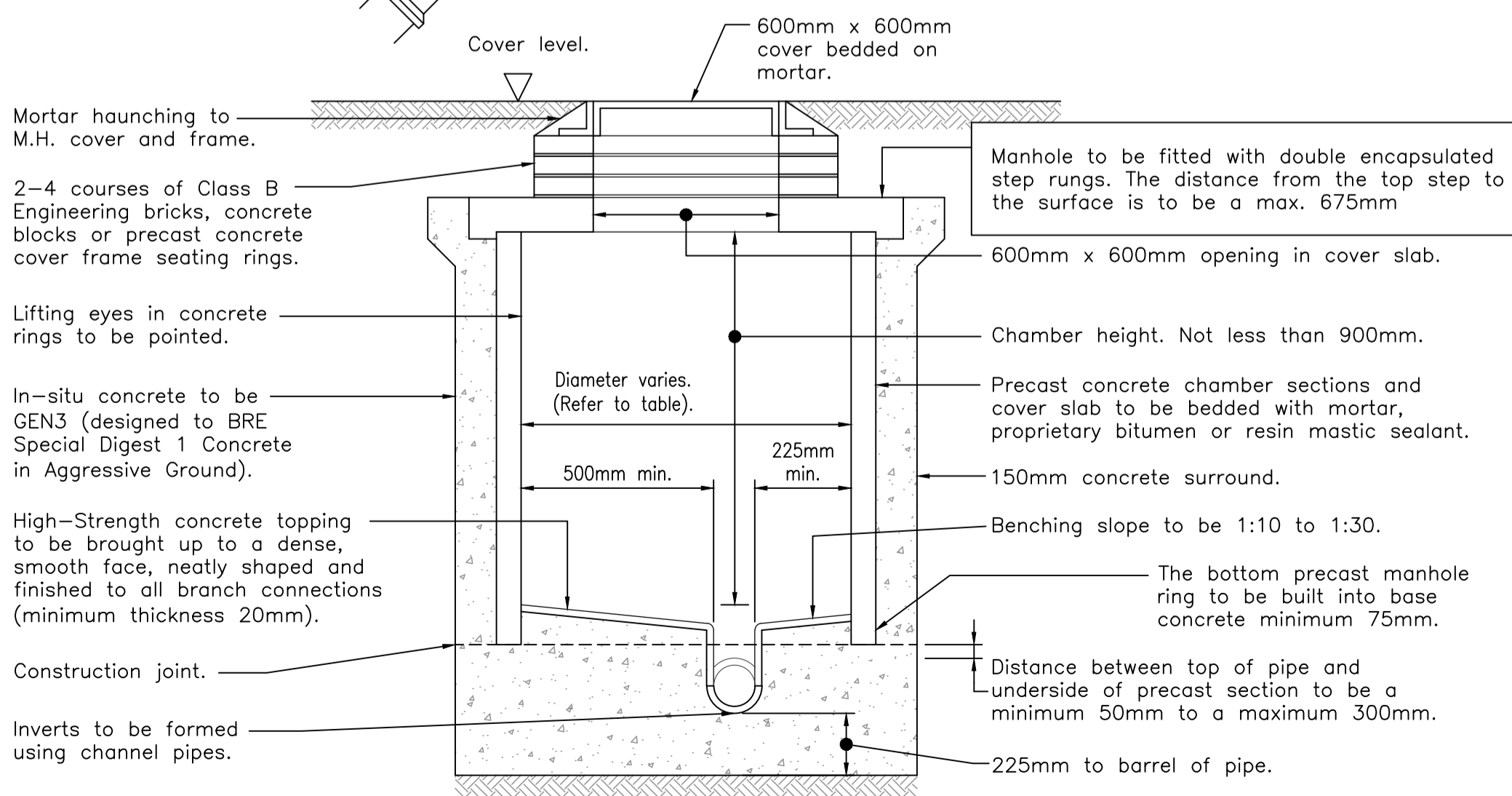
GRAVEL DRAINAGE STRIP DETAIL



Rocker Pipes	
Nominal dia. (mm)	Effective length (m)
150 – 600	0.6
601 – 750	1.0
Over 750	1.25

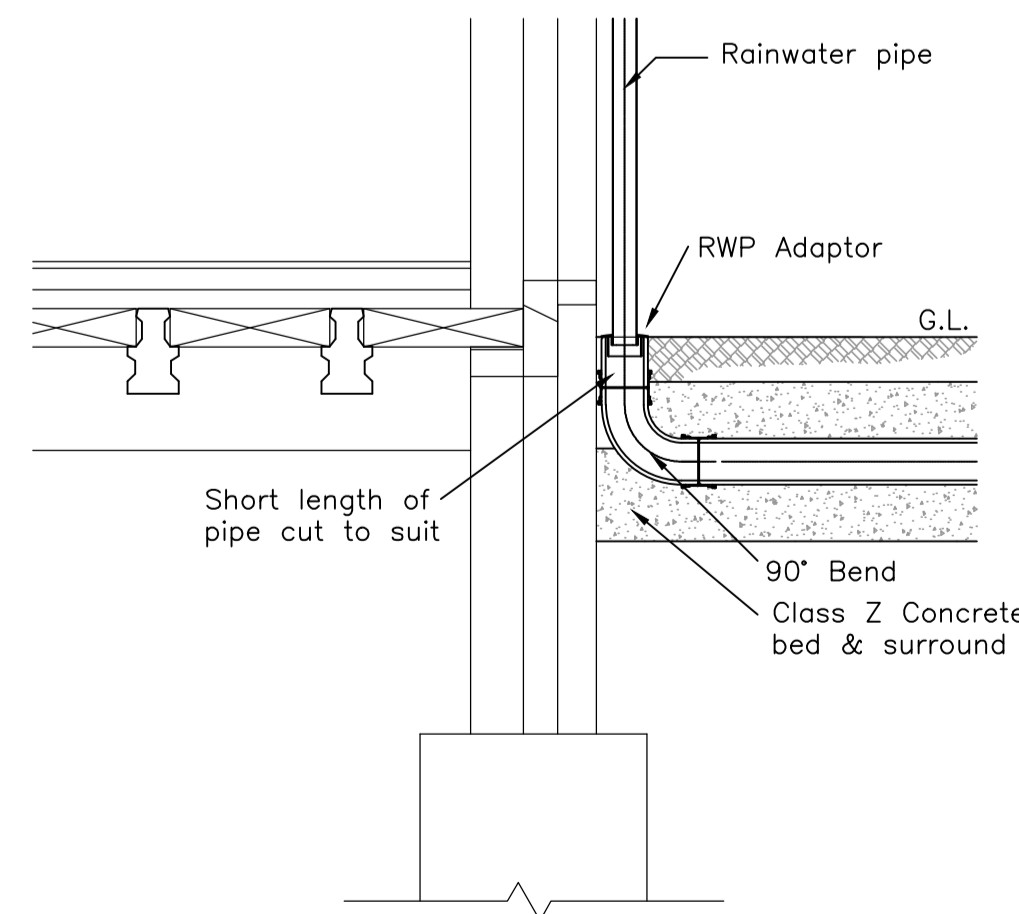
Manhole Diameters	
Diameter of largest pipe in manhole (mm)	Internal diameter of manhole (mm)
Less than 300	1200
375 – 450	1350
500 – 700	1500
750 – 900	1800
Greater than 900	Consult Undertaker

CONCRETE CATCHPIT MANHOLE

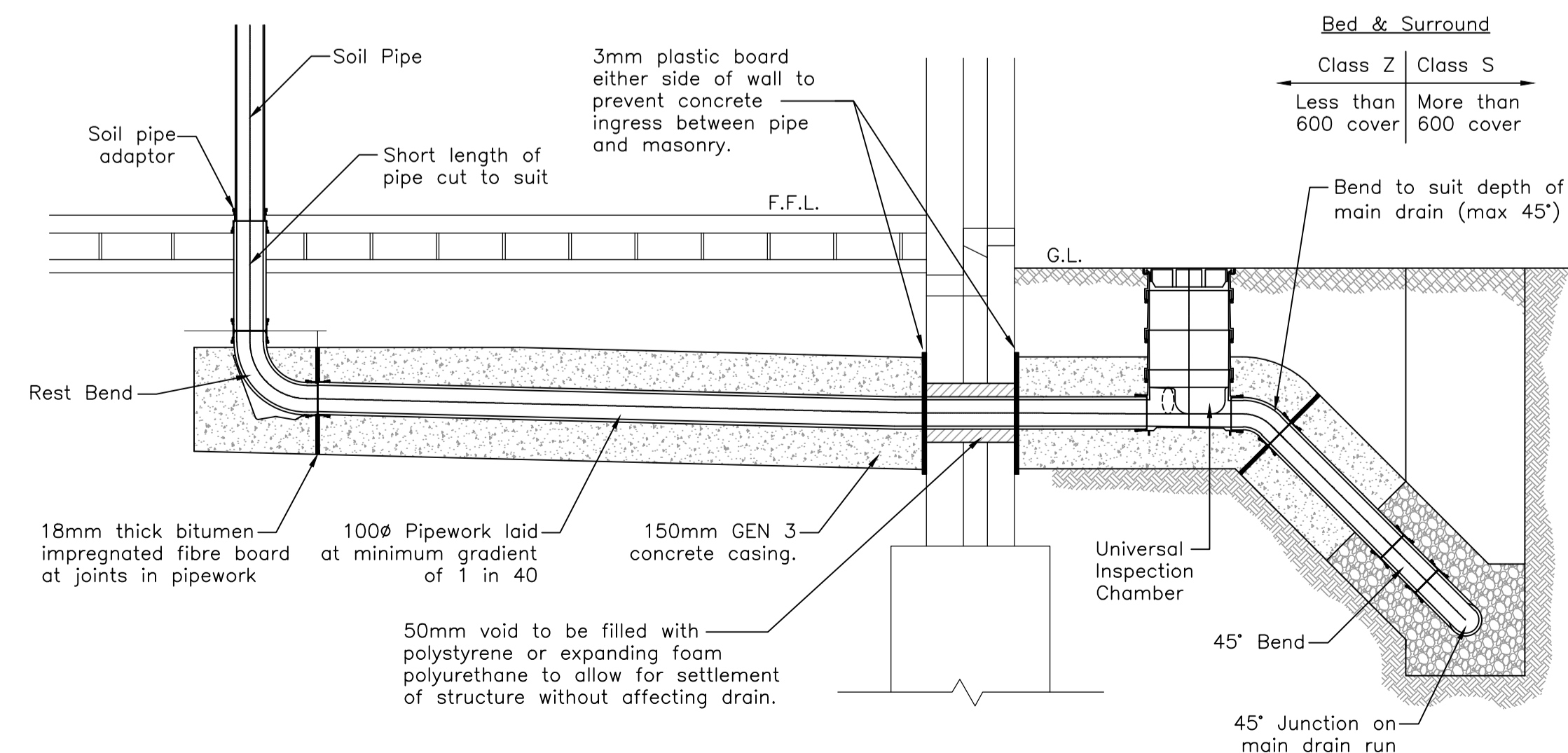


MANHOLE – TYPE B

Max. depth from cover level to soffit of pipe 3.0m



EXTERNAL RAINWATER PIPE CONNECTION DETAIL



TYPICAL SOIL VENT PIPE & UNIVERSAL INSPECTION CHAMBER DETAIL

NOTE

Adoptable sewers and manholes to be constructed in accordance with "Design & Construction Guidance", and to the approval of the adopting water authority.

Private drainage to be constructed in accordance with the Building Regulations "Approved Document H".

NO.	REVISION	BY	DATE
1	INITIAL ISSUE	EL	07.02.24

DRAWING STATUS

PRELIMINARY

DRAWING TITLE

DRAINAGE DETAILS  
 SHEET 1 OF 2

PROJECT

STEAM MILLS ROAD,  
 CINDEFORD



Unit B10  
 Elmbridge Court Business Park  
 Gloucester, GL3 1JZ  
 T: 01452 309 727  
 E: mail@simpsoneng.com  
 W: www.simpsoneng.com

London, Henley-on-Thames, Gloucester

Drawn	Chkd	AdC	Scale	Date
EL	AdC		1:20 @ A1	FEB 2024

Purpose of Issue

FOR PLANNING

Project Number	Drawing Number	Revision
P23-1026	101	-