

# 04 Landscape Proposals

## FLOOR 6 SOFT LANDSCAPE PROPOSALS

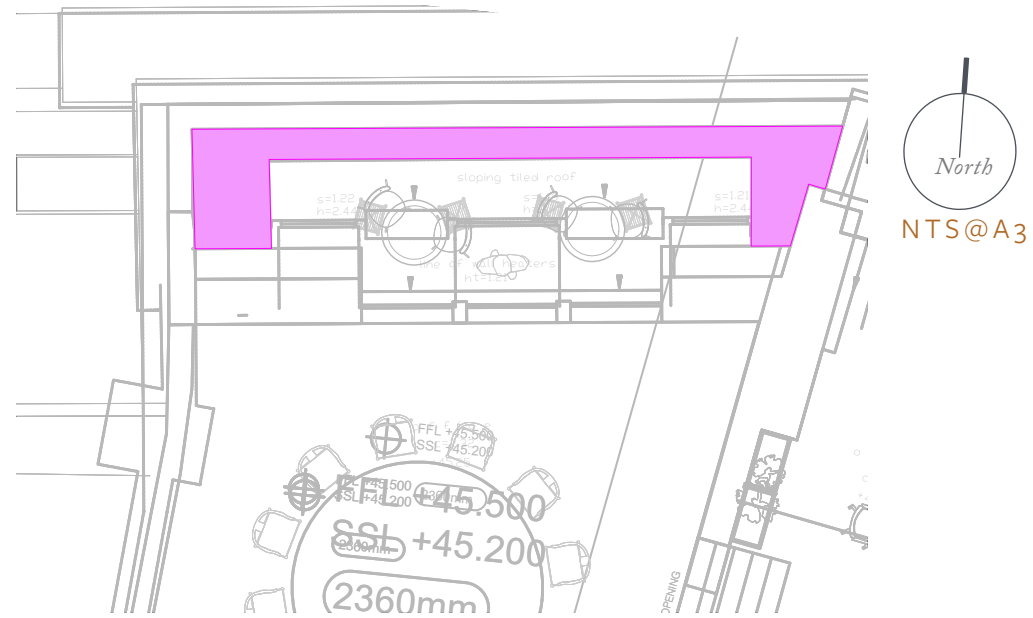
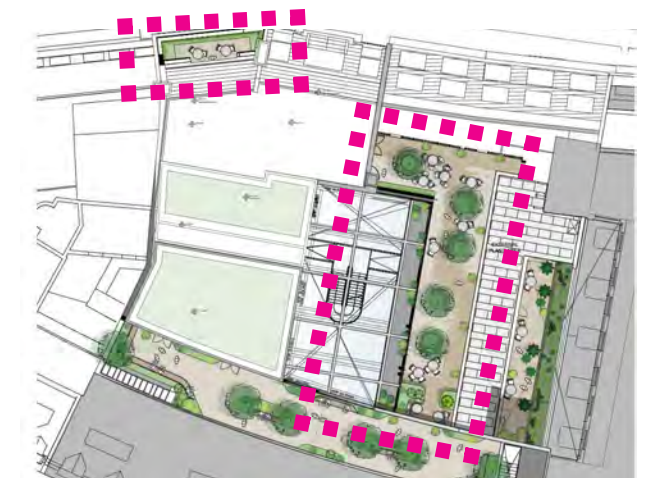


FIGURE 20: FLOOR 6 ENCLOSED TERRACE SOFT LANDSCAPE PLAN

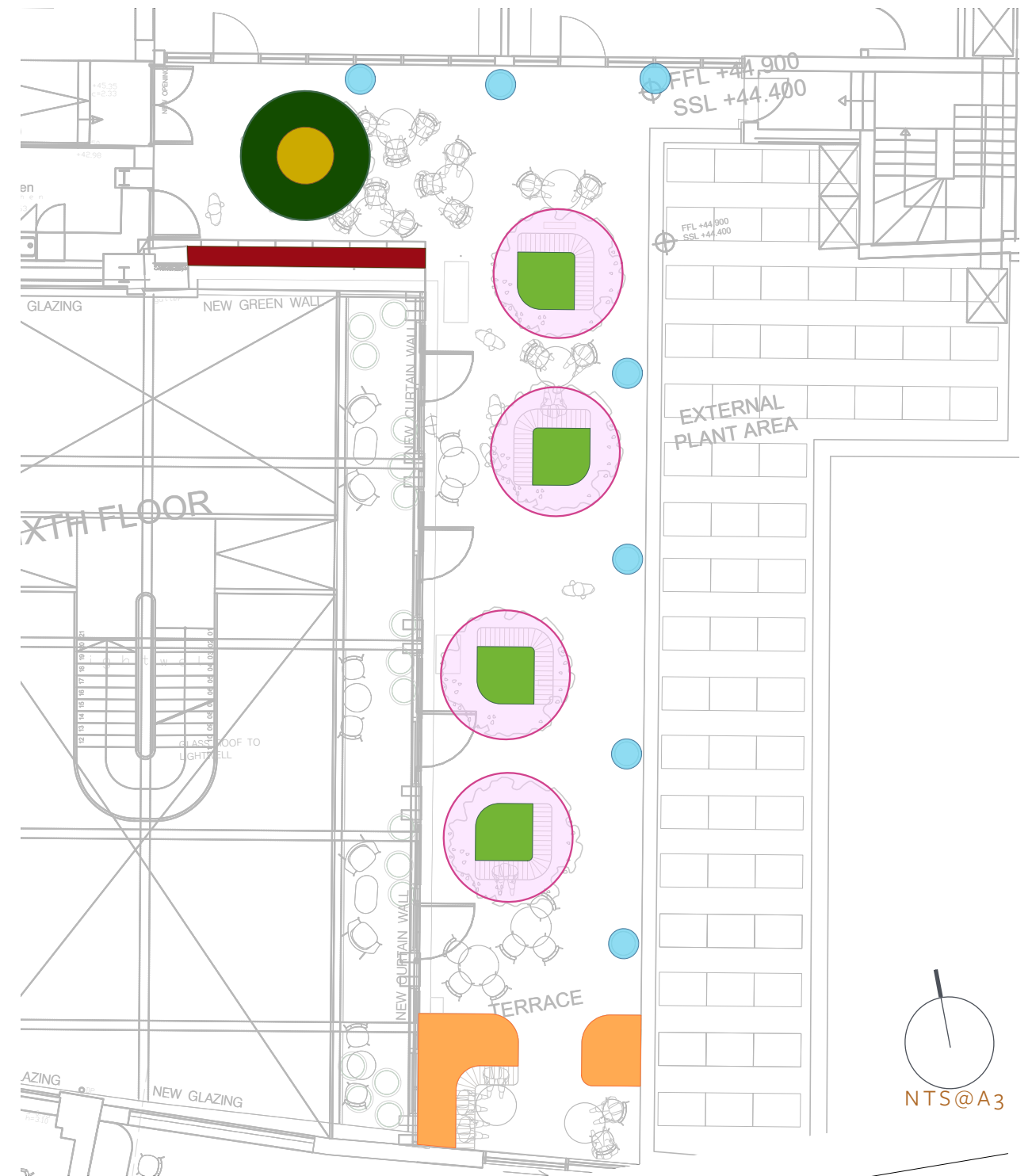




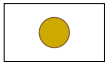
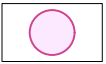




FIGURE 21: FLOOR 6 COURTYARD SOFT LANDSCAPE PLAN




KEY			
	South Planter With shade mix planting		Terrace Planter Shade mix planting
	Square Tree Planting Mix		Betula utilis jaquemontii 3.5m ht multistem
	Round Tree Planting Mix		Amelanchier lamarkii 3.5m ht multistem
	Climber Planter With trained wall climber		Floor 6 Planting Pot Mix

# 04

## Landscape Proposals

FLOOR 1 SOFT LANDSCAPE PROPOSALS

KEY

-  Raised Planter  
Shade mix with hanging climbers
-  Dicksonia antarctica  
1.2m clear stem with understorey planting in pot
-  Floor 1 Planting Pot Mix

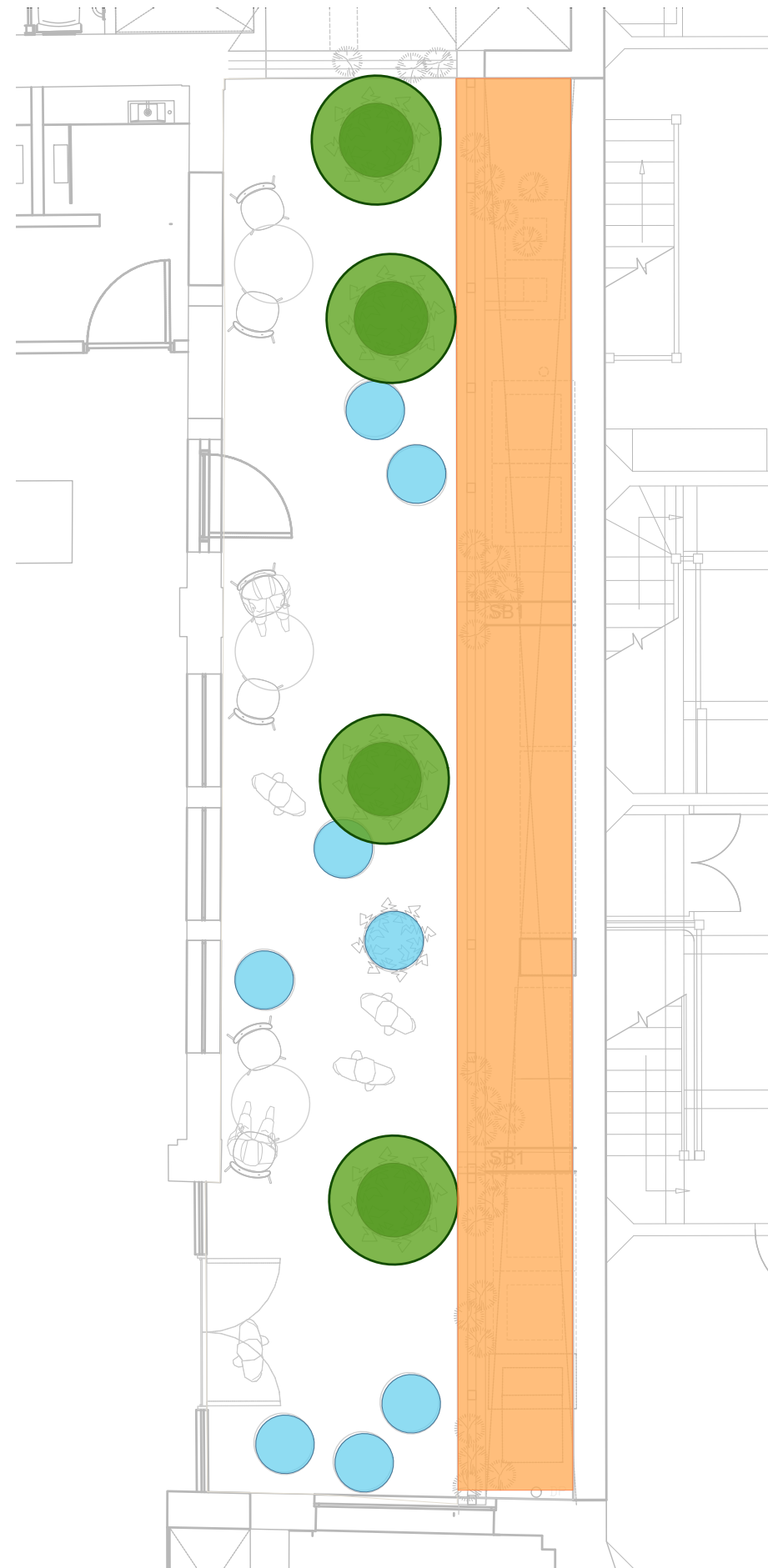
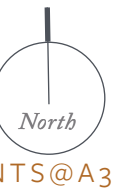
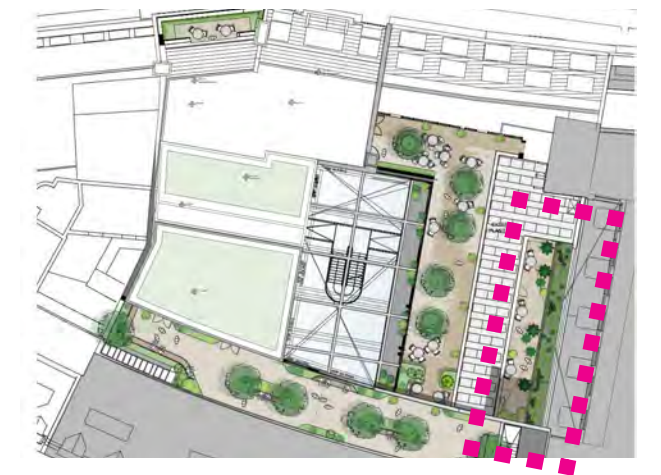


FIGURE 22: FLOOR 1 SOFT LANDSCAPE PLAN





# 04 Landscape Proposals

FLOOR 7 PLANTING PALETTE



Cistus 'Sunset'



Pittosporum tobira 'Nanum'



Helianthemum 'The Bride'



Stipa tenuissima



Helictotrichon sempervirens



Santolina 'Edward Bowles'



Phlomis tuberosa 'Amazone'



Rosmarinus officinalis 'Prostratus Group'



Salvia officinalis 'Purpurea'



Rosmarinus officinalis 'Sissinghurst Blue'



Chaemerops humilis



# 04 Landscape Proposals

FLOOR 7 PLANTING PALETTE



Anthemis E. C. Buxton'



Hylotelephium 'Brilliant'



Thymus serpyllum



Artemisia 'Powis Castle'



Origanum 'Rosenkuppel'



Stipa tenuissima



Salvia 'Caradonna'



Eryngium bourgatii



Kniphofia 'Tawny King'



# 04 Landscape Proposals

FLOOR 6 PLANTING PALETTE



Sarcococca 'Fragrant Valley'



Trachelospermum jasminoides



Hedera helix 'Glacier'



Vinca minor 'La Grave'



Bergenia 'Angel Kiss'



Polystichum setiferum



Helleborus 'Double Ellen'



Carex flacca



Liriope muscari 'Royal Purple'



Erythronium 'White Beauty'



# 04 Landscape Proposals

FLOOR 6 PLANTING PALETTE



Betula 'Fascination'



Carex flacca



Hyacinthoides non-scripta



Galanthus nivalis



Fatsia japonica



Campanula poscharskyana



Penstemon 'White Bedder'



Dryopteris wallichiana



Mahonia 'Charity'



# 04 Landscape Proposals

FLOOR 1 PLANTING PALETTE



Hebe rakiensis



Clematis armandii



Vitis vinifera 'Purpurea'



Muehlenbeckia complexa



Parthenocissus tricuspidata



Pileostegia viburnoides



Hakonechloa macra



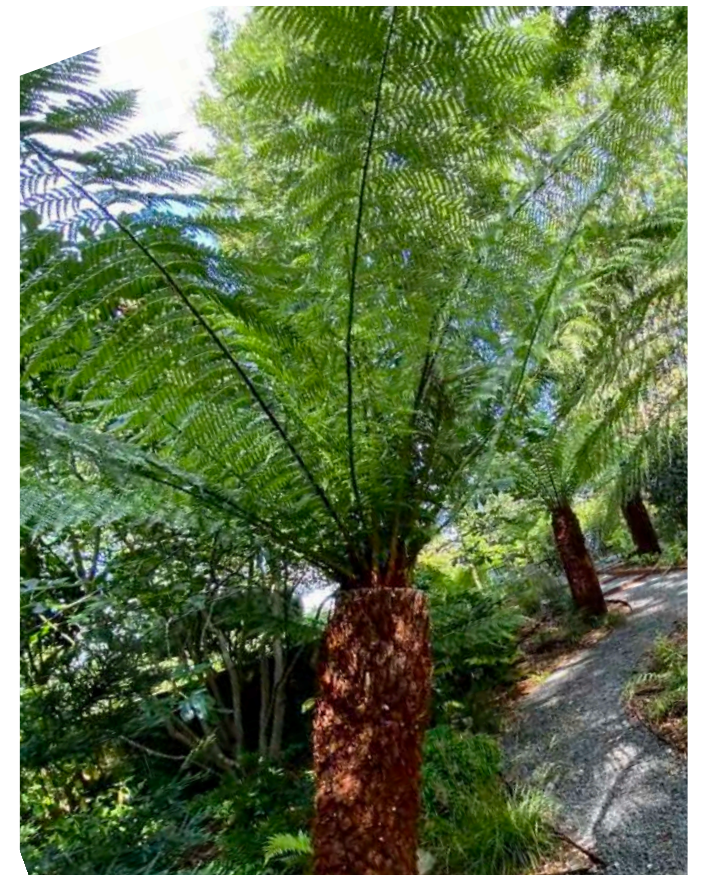
Mahonia 'Soft Caress'



Fatsia japonica



Dryopteris wallichiana

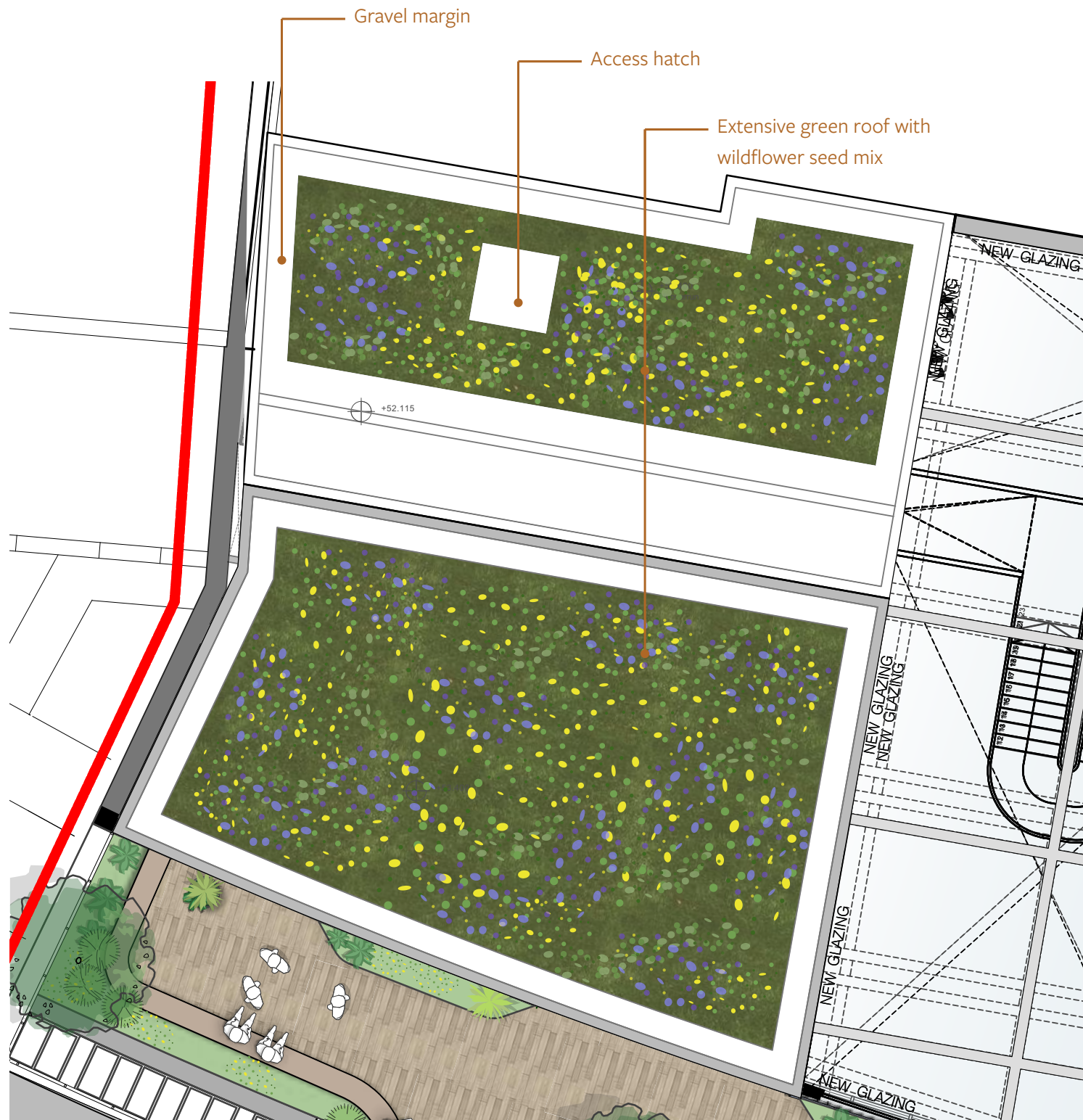


Dicksonia antarctica



# 04 Landscape Proposals

## BIODIVERSE GREEN ROOF



BauderGREEN Flora 5 Biodiverse mix - suitable for urban environments



Two areas of biodiverse green roof will comprise a mix of 90% wildflowers and 10% grasses, including 28 wildflower species, on a lightweight substrate. The seed mix is selected for its tolerance to urban conditions and its benefits to invertebrates and pollinating insects..



# 04 Landscape Proposals

MAINTENANCE STRATEGY

## THE APPROACH TO MANAGEMENT OF THE EXTERNAL TERRACES

A sustainable approach to landscape management is proposed. The proposed plant species and materials are generally robust and resilient to the more demanding conditions of an urban terrace and the variabilities of climate uncertainty. Tree species include Birch and Amelanchier; these are relatively disease free and tolerant of a range of temperatures and moisture levels. Understorey plants are also selected for the varying light levels, from the shadiest 1st floor enclosed terrace to the stronger light levels on Floor 6 and 7. Mediterranean plants populate the Floor 7 amenity terrace, tolerant of wind and reflected light.

The extensive green roof will comprise native wildflower plant species, formulated specifically to succeed under urban conditions.

A five year management and maintenance plan will be prepared in line with expected planning conditions, with schedules and standards set out specifically for the Glasshouse terraces. Weeding, annual cutting back of deciduous herbaceous plants, and litter collection will be part of the expected tasks. Monitoring will be set out with a review to consider the relative success of the planting and seating, to ensure it continues to contribute to the strategies for biodiversity and user experiences.

All planting beds will be irrigated, using sensor technology that determines moisture levels and schedules optimum watering hours. Bib taps are to be installed at each terrace as a backup. Pots will contain a buried tank reservoir, to reduce the limited manual watering. Once plants are established, a review of irrigation may further reduce watering, e.g. for the Mediterranean species.

Any plant that fails within the first five years following planting will be replaced with the same species, at the same proposed size, as specified in the planting schedule.







# Robert Myers Associates

LANDSCAPE ARCHITECTURE

13-15 COVENT GARDEN  
CAMBRIDGE  
CB1 2HS

T: +44 (0) 1223 351400

PENSONS YARD  
STOKE BLISS  
WORCESTERSHIRE

WR15 8RT  
T: +44 (0) 1885 227377

[info@robertmyers-associates.co.uk](mailto:info@robertmyers-associates.co.uk)  
[www.robertmyers-associates.co.uk](http://www.robertmyers-associates.co.uk)