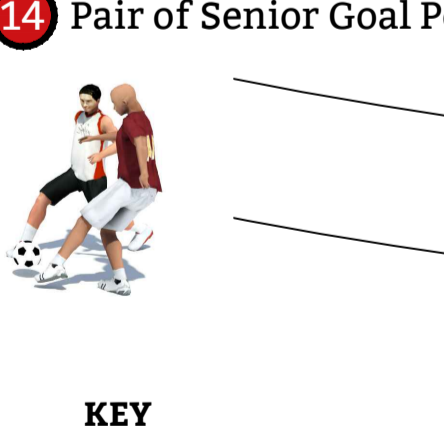
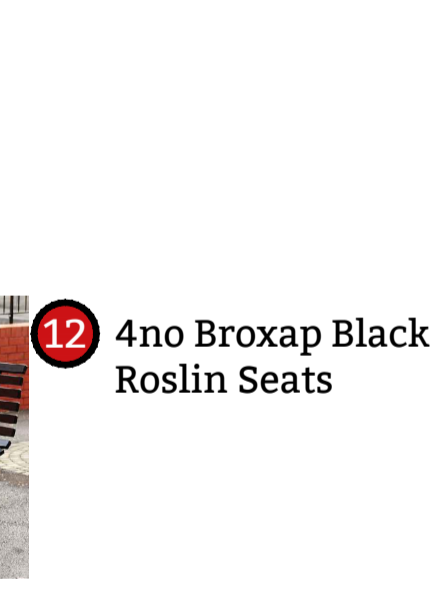
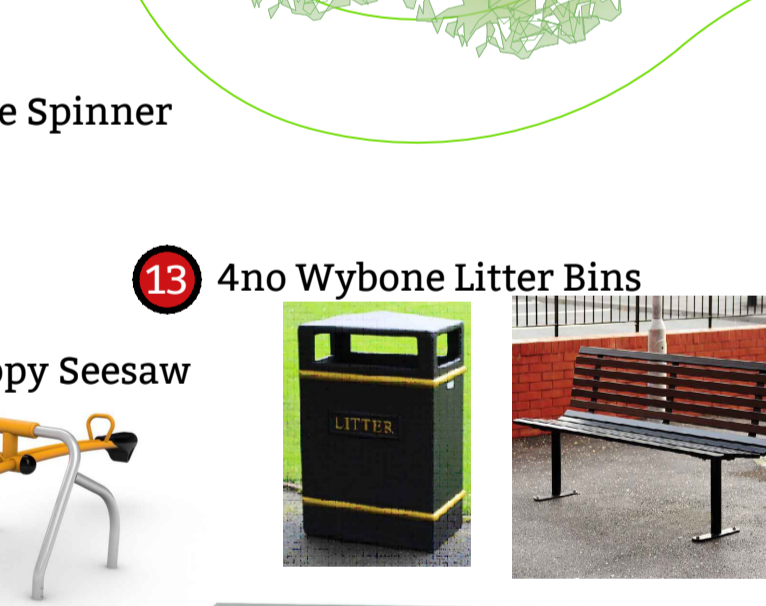
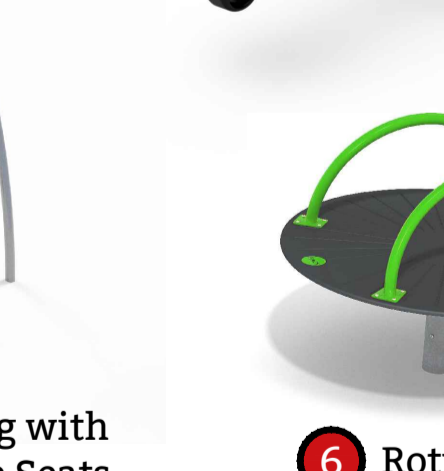
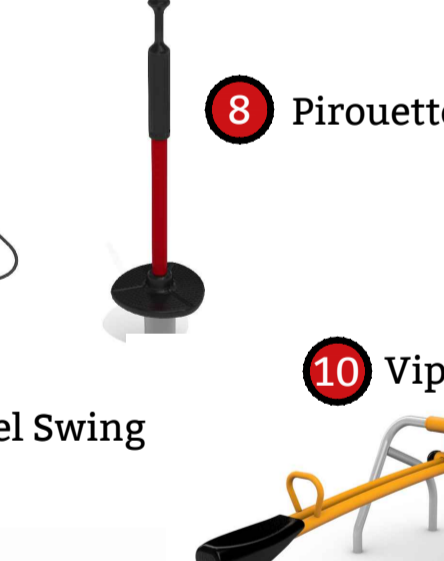
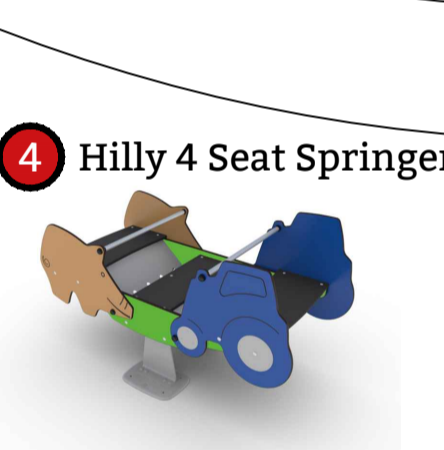
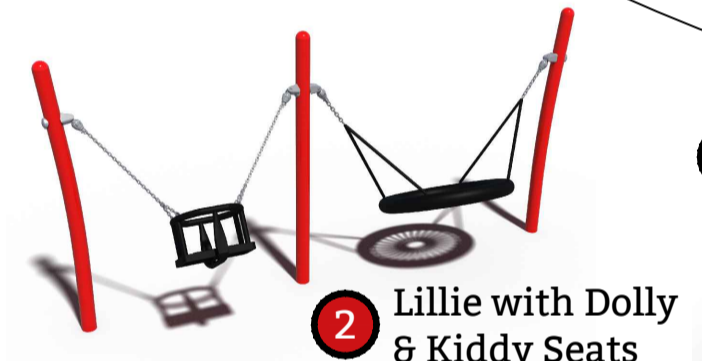
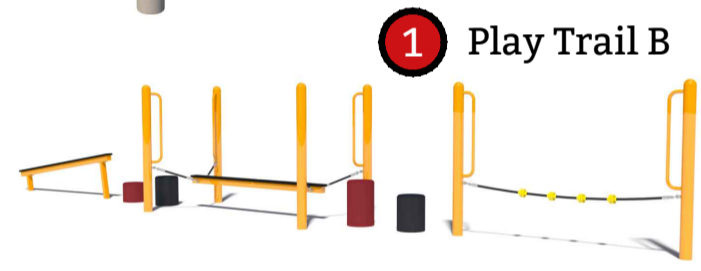
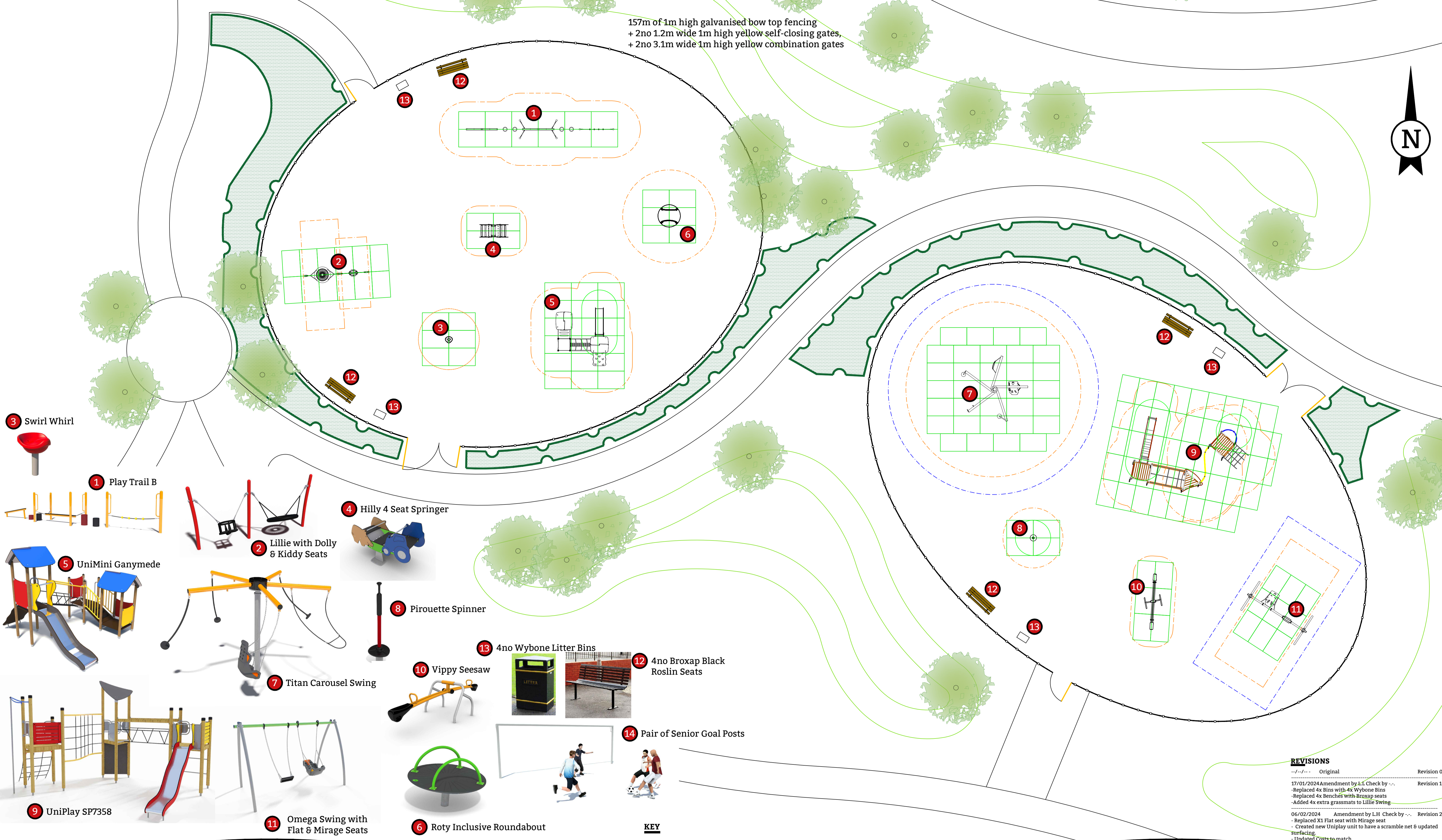
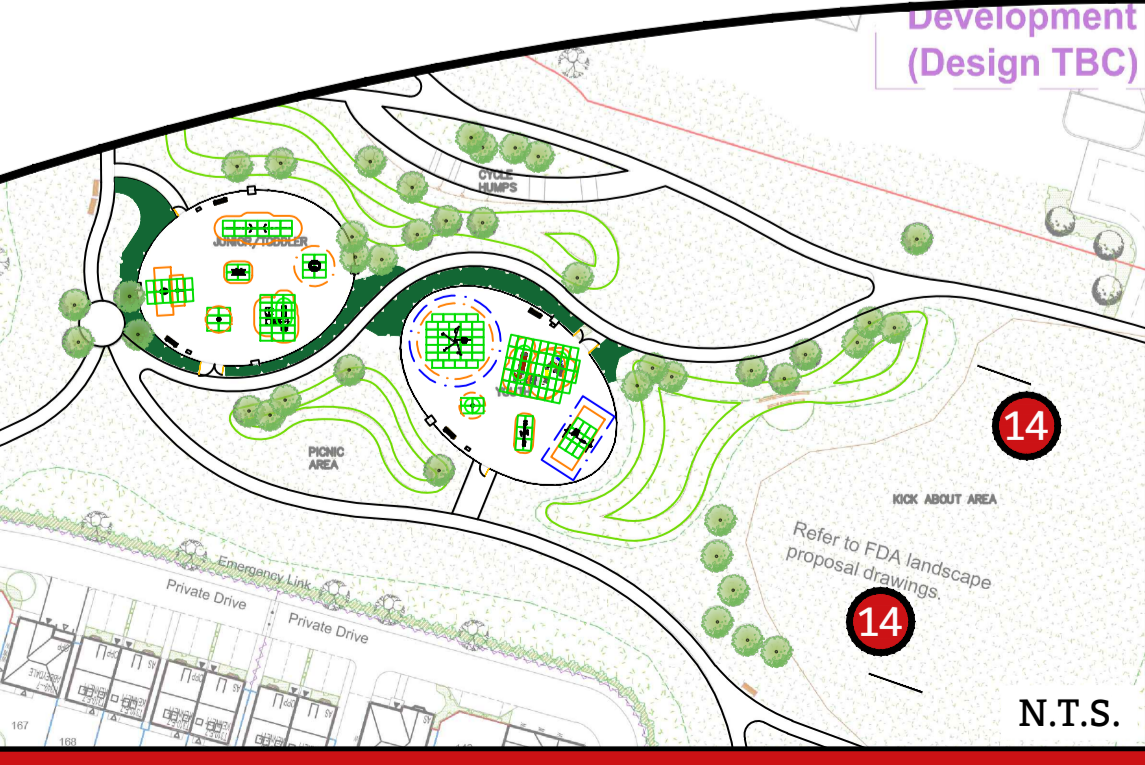


157m of 1m high galvanised bow top fencing
+ 2no 1.2m wide 1m high yellow self-closing gates,
+ 2no 3.1m wide 1m high yellow combination gates



KEY

- Falling Space Zone (EN1176)
- Free Space Zone (EN1176)
- Clearance Zone (EN1176)



GENERAL NOTES

If not indicated on this plan, north point must be confirmed prior to installation to ensure that slides do not face due south.

No allowance has been made for soft landscaping (trees, mounds, planting, turf or general reinstatement). These should be carried out by others.

Exact positions & orientation of new items may be subject to a final site survey and setting out plan.

Any inconsistencies on site should be verified with HAGS before commencement of work.

HAGS recommend that existing trees are risk-assessed by the client to ensure the integrity of accessible branches, that overhanging limbs do not conflict with new play equipment or vehicle access and that the canopy will not produce excessive leaf drop which could cause a hazard within the play area.

This design layout conforms to the relevant EN Safety Standard.

GRASS & GRASS MAT SURFACING

Where equipment is installed directly into grass and the free height of fall is between 0.6m and 1.5m it is the responsibility of the playground operator to ensure that the grass sward is maintained in good order.

Where equipment is installed with grass mat surfacing it is the responsibility of the playground operator to ensure that the grass sward is maintained in good order.

When laid directly onto existing grass this surface will follow the natural contours of the ground unless HAGS have specifically detailed additional preparation/levelling/or turf works.

REVISIONS

Revision	Description
Revision 0	Original
Revision 1	17/01/2024 Amendment by L.H. Check by -- - Replaced 4x Bins with 4x Wybone Bins - Replaced 4x Benches with Broxap seats - Added 4x extra grassmats to Lillie Swing
Revision 2	06/02/2024 Amendment by L.H. Check by -- - Replaced X1 Flat seat with Mirage seat - Created new Uniplay unit to have a scramble net & updated surfacing. - Updated Costs to match

CUSTOMER
Barratt Homes
Yorkshire

PROJECT
Hawk View

TITLE
Proposed Equipment
Layout

HAGS[®]

T: 0845 260 1655 E: sales@hags.co.uk W: www.hags.co.uk

DATE: 01/12/22 SCALE: 1:100 @ A1
DRAWN BY: N.B. CHECKED BY: G.H.

DRAWING NUMBER: Q-30166-Y1G6-C REVISION 2

© HAGS 2021 SHEET 1 OF 1